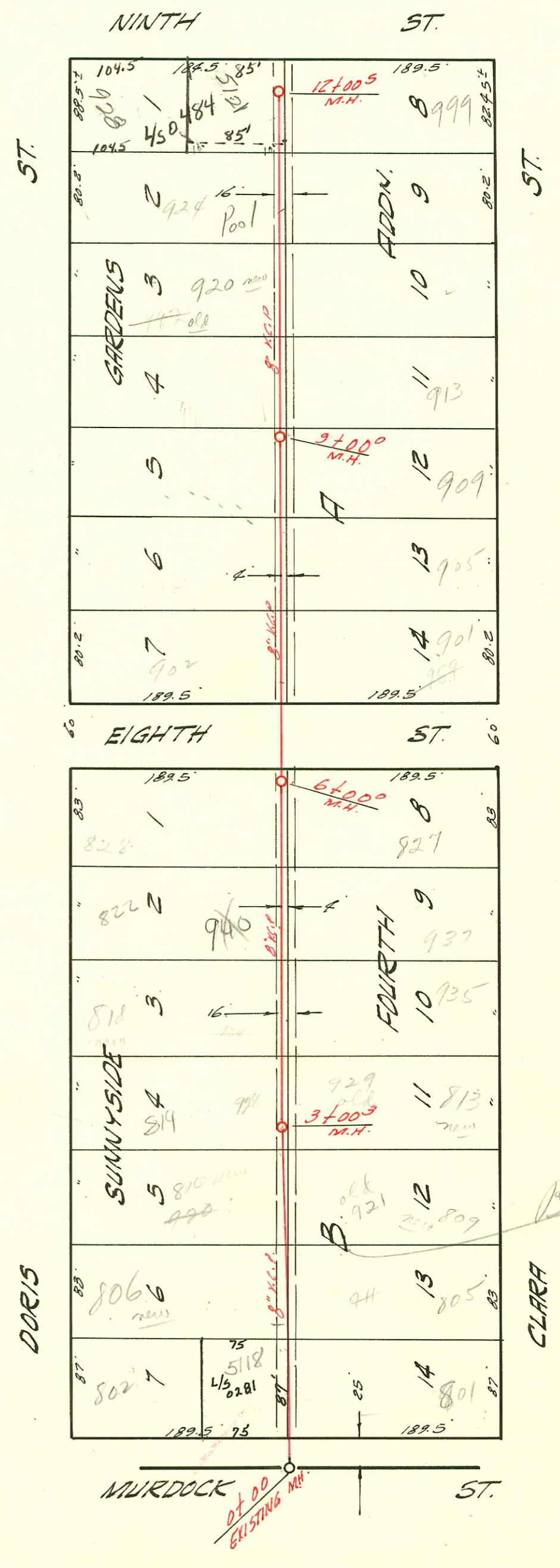


LATERAL 88 SUBMAIN 5 S.S.22  
 W. B. CARTER CONSTR. CO. INC. 3-2-59  
 BK. NO. K-56 PROJ. NO. C28-112



LATERAL 89 SUB. 5 S.S.22  
 W. B. CARTER CONSTR. CO. INC. 3-2-59  
 BK. NO. K-48 PROJ. NO. C 28-113

### CONSTRUCTION RECORD

### SERVICE RECORD

STATION	ELEVATION		Depth	MANHOLE	4-INCH "Y" BRANCHES		No. of Permit		House Number		DATE OF PERMITS	
	Ground	Grade			North West	South East	North West	South East	North West	South East	North West	South East
<b>LAT. 88 SUB 5</b>												
0+00	122.0	114.00	8.0	Existing M.H.								
1+00	122.0	114.40	7.6		+72°	+70°	11118	221069	726 N. Bacher	733 N. Young	7-20-59	7-22-70
2+00	122.1	114.80	7.3			+37		19296	737 N. Young			5-14-70
3+00	122.3	115.20	7.1	2+996	2+27°	2+25°	11119	56895	739 N. Bacher	749 N. Young	7-20-59	7-26-76
4+00	122.1	115.60	6.5		3+754		9649	7650	836 N. Bacher		3-19-59	
5+00	121.7	116.00	5.7			+974		774	825 N. Young			12-54-6
6+00	121.3	116.42	4.9	6+036		+87.4		1320	761 N. Young			5-19-59
7+00	121.2	116.80	4.4		5+106							8-12-80
8+00	122.4	117.20	5.2		+80°	+82°	11051	11522	801 N. Young		8-5-59	9-9-59
9+00	123.9	117.60	6.3	8+995	+30°	+38°	9651	23838	817 N. Young		3-19-59	4-20-71
10+00	124.0	118.00	6.0		+51°	+49°	10895	10089	833 N. Young		12-3-80	4-27-59
11+00	123.9	118.40	5.5		+02°							
	124.8	118.72	6.0	11+702		+165	13040		840 N. Bacher			6-27-60
<b>LAT. 89 SUB. 5</b>												
0+00	123.6	115.54	8.1	Existing M.H.								
1+00	124.5	115.78	8.7		+53°	+51°	14101	10234	802 N. Davis	801 N. Davis	9-25-79	
2+00	125.2	116.18	9.0		+23°	+21°	12539	15770	805 N. Davis	805 N. Davis	4-23-62	6-15-62
3+00	124.1	116.58	7.5	3+003	+12°	+10°	10279	11794	807 N. Davis	807 N. Davis	5-18-59	11-12-59
4+00	124.1	116.98	7.1		+81°	+79°	16063	10943	813 N. Davis	813 N. Davis	8-22-62	7-17-59
5+00	124.4	117.38	7.0		+58°	+56°		10170	827 N. Davis	827 N. Davis		4-28-59
6+00	124.4	117.78	6.6	6+00°	5+51°	+49°	19569	18199	828 N. Davis	827 N. Davis	6-4-70	3-2-70
7+00	125.5	118.18	7.3		6+90°	+88°	15711	9505	802 N. Davis	801 N. Davis	6-5-62	3-3-59
8+00	126.1	118.58	6.5		+925	+61°	15668		805 N. Davis	805 N. Davis		6-6-62
9+00	126.3	118.98	7.3	9+00°	+56°	+54°	9843	12414	866 N. Davis	809 N. Davis	3-31-59	3-15-62
10+00	126.4	119.38	7.0		+35°	+37°	12417	15824	916 N. Davis	913 N. Davis	3-28-62	6-27-62
11+00	126.7	119.78	6.9		+93°	+91°	15512	15882	924 N. Davis	921 N. Davis	4-20-62	9-11-62
12+00					+61°	+59°	10235	11646	808 N. Davis	809 N. Davis	5-6-59	10-20-59
	126.0	120.18	5.8	12+005								4-6-81

Jap #23839 - 821 N. Young - Donald Thompson - 4-20-71 (8+77.5)  
 #9503 - Top - 928 N. Davis - Kalgpath Peltg 3-3-59 (3+06.8) #18077 - Jap - 7450 N. Young - Frederick - 6-29-60 (2+62.6)  
 #9504 - Top - 940 N. Davis - Kalgpath Peltg 3-3-59 (4+72.8)  
 10654 - Top - 741 N. Young - Frederick 6-17-59 1193.6  
 11678 - Top - 809 N. Young - Frederick 10-27-59