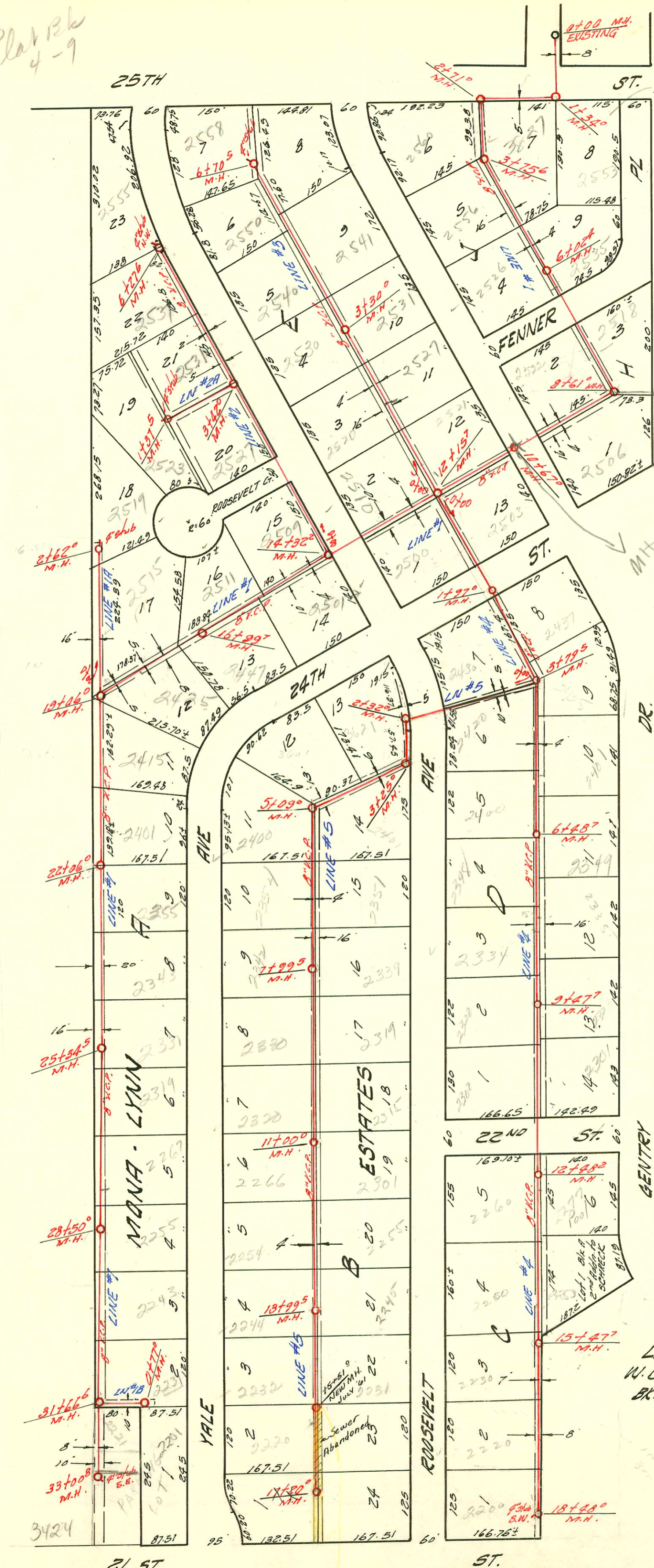


Plot Bk 4-9



See p. 90  
1080'

MH 10+67  
abandoned  
with rehab.  
see comments  
for  
2/13/69

CRISTLER  
Add  
Proposed  
Sewer ET  
10-14-66  
see better

1" = 150'

LATERAL 7 S.S. 23  
W.B. CARTER CONSTR. CO 4-2-59  
BK. NO. K-53 PROJ. NO. C27-47

East's Inc.  
9-30-63  
Draw No 25-572

CONSTRUCTION RECORD

SERVICE RECORD

STATION	ELEVATION		Depth	MANHOLE	4-INCH "Y" BRANCHES		No. of Permit		House Number		DATE OF PERMITS	
	Ground	Grade			North West	South East	North West	South East	North West	South East	North West	South East
33+00	201.4	194.51	6.9	33+00 <sup>B</sup>	4" stub	SE.						
LINE #1A												
0+00	194.3	187.00	7.3	Existing M.H.								
1+00	194.0	187.40	6.6									
						+47°						
2+00	194.5	187.80	6.7									
	194.5	188.06	6.4	2+62°	4" stub N.		95-1962 <sup>77</sup> 9629		2519 NB Roosevelt		11-16-25 3-13-59	
LINE #1B												
0+00	201.0	195.75	5.2	Existing M.H.								
	202.4	196.01	6.4	0+77°				C75839	2221 <sup>77</sup> Yale			12/20/79
LINE #2												
0+00	186.8	181.02	5.8	Existing M.H.								
1+00	187.6	181.40	6.2									
2+00	188.7	181.80	6.9									
3+00	190.4	182.20	8.2									
	191.0	182.36	8.6	3+42°	3+99.0 <sup>78</sup>		5587		2531 Roosevelt		4-12-62	
4+00	191.7	182.60	9.1			+50°		9617	2531 N Roosevelt		3-12-59	
5+00	191.9	183.00	8.9			+81°		9616	2537 N Roosevelt		3-12-59	
6+00	191.6	183.40	8.2					12248	2555 N Roosevelt		2-1-60	
	192.6	183.51	9.1	6+27°	4" stub N.W.							
LINE #1A												
0+00	191.4	185.50	5.9	Existing M.H.								
						+126 (45)		9619	2527 <sup>78</sup> Roosevelt		3-12-59	
						+65 (N.W.)		9618	2531 N Roosevelt		8-10-66	
1+00	192.9	185.90	7.0			0+18°		9577	2523 N Roosevelt		3-10-59	
	193.2	186.05	7.1	1+37°	4" stub N							
LINE #3												
0+00	183.9	175.00	8.9	0+00								
						+58°		5321	2510 N Roosevelt		3-9-82	
1+00	184.9	175.59	9.3			0+56°		94-2705-7 9610	2537 R Gentry		3-3-94 3-12-59	
						Replaced center of section 4" S.D.R. 35 only.						
2+00	185.9	176.19	9.7			+156		10088	2500 <sup>77</sup> Roosevelt		4-27-59	
						+92°		9611	2531 Gentry		3-12-59	
3+00	186.3	176.19	9.5									
	186.6	176.97	9.6	3+30°				10326	2530 N Roosevelt		5-7-59	
4+00	188.0	177.39	10.6			+40°						
						+15°						
5+00	190.0	177.99	12.0			+47°		9615	2000-2222 2540 N Roosevelt		3-12-59	10-12-00 3-12-59
						4" SCH 40 4+88°			2541 R Gentry			
6+00	190.5	178.59	11.9			+98°		9609	2550 N Roosevelt		3-4-61 3-12-59	
	190.7	179.01	11.7	6+70°	4" stub N.W.	+58°		9608	2551 Gentry		2-9-70	
LINE #4												
0+00	183.72	174.14	9.6	Existing M.H.								
						+34°						
1+00	182.3	174.74	7.6									
						+01°		12333	2500 N Roosevelt		2-18-60	
2+00	181.8	175.32	6.5	1+97°								
						+64°			C5493	2437 N Gentry		10-26-67
3+00	183.4	175.94	7.5			+62°		5731	2430 <sup>77</sup> Gentry		8-23-70	
	183.4	176.43	7.0	3+79°								
4+00	184.0	176.51	7.5			+87°			C33592	2425 Gentry		7-14-72
						+70°		9758	2420 N Roosevelt		3-23-59	
5+00	185.0	176.91	8.1									
						4" SCH 40 5+61°		2000-146 28243	2400 N Roosevelt		9-27-71	1-18-00 3-26-59
						5+43°		9694	2401 N Roosevelt		See next pg	
6+00	186.2	177.31	8.8			+92°						
						4" SCH 40 6+36°		2850-2844 <sup>07</sup> 2876-2860 282640	2349 <sup>02</sup> Gentry		feet 4' high end	11-13-00 2-5-69
7+00	186.9	177.51	9.4	6+48°								
	187.6	177.71	9.9			+186		9757	2345 N Roosevelt		3-23-59	
8+00	188.3	178.11	10.1			+95°						
						+185		12149	2334 N Roosevelt		4-9-02 1-8-60	

#E 9967 - 2520 N. Roosevelt - from line conn. swimming pool east house. 8-7-68 (line 3 2+15.6 wye for house line)  
 C75839 @ 2221<sup>77</sup> Yale made wye repair 58' w/o of S. Property Line could not find S. M.H.  
 997-2199-7 @ 2279<sup>78</sup> 2221 N Yale repair + (72' N of MH)  
 98-7322-7 B698

2000-00146-118/00 - 2401 N Gentry Dr - Boardman - 4" SCH40 - ITWIN CO, 2H45, Replaced 10' on high end