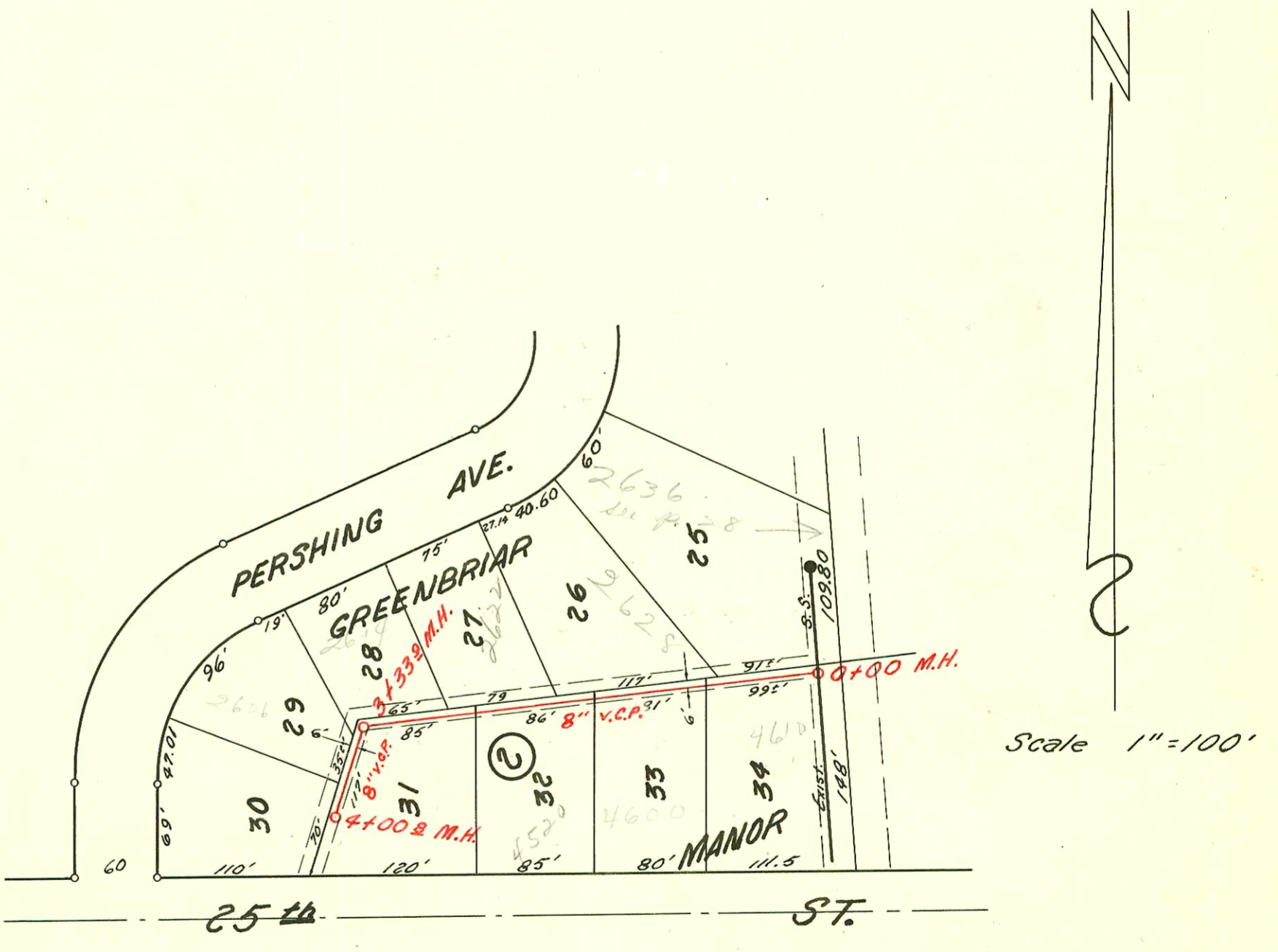


LATERAL 10 SUB. 6 S. 5.22
 W. B. CARTER CONSTR. CO. 3-25-59
 BK. NO. K-52 PROJ. NO. C 28-116



LATERAL 12 SUB 2 S. S. NO. 23
 W. B. CARTER CONSTR. CO. APRIL 10, 1962
 BK. NO. K-60 PROJ. NO. C20-21 BOOKED 4-25-62

