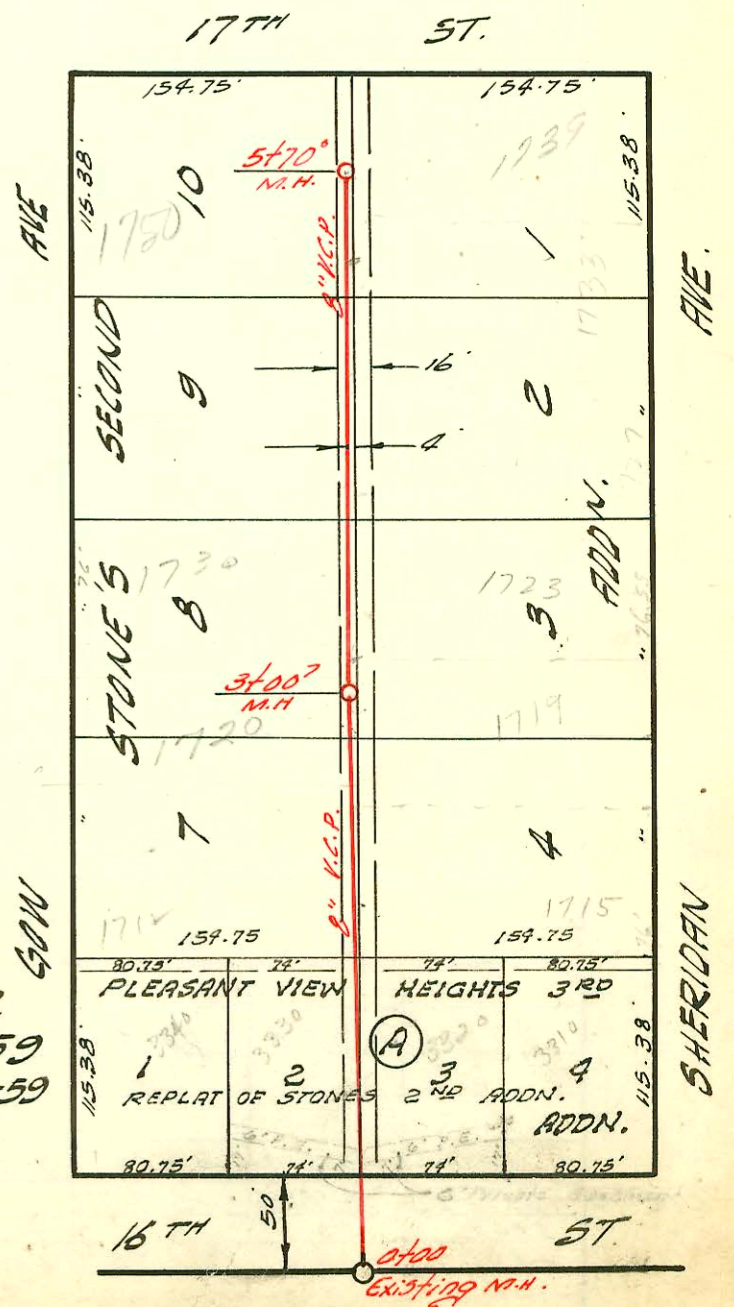


LATERAL 18 SUB. 10 S.S. 22  
 UTILITY CONTR. INC. 3-25-59  
 BK. NO. K-49 PROJ. NO. C27-87

LATERAL 10 SUB. 10 S.S. 22  
 UTILITY CONTR. INC. 3-25-59  
 BK. NO. K-50 PROJ. NO. C26-59



CONSTRUCTION RECORD

SERVICE RECORD

STATION	ELEVATION		Depth	MANHOLE	4-INCH "Y" BRANCHES		No. of Permit		House Number		DATE OF PERMITS		
	Ground	Grade			North West	South East	North West	South East	North West	South East	North West	South East	
<i>CINE #1</i> 0+00	124.5	114.48	10.0	Existing MH.		+99°		11424		1801 N. St. Paul		9-14-59	
1+00	124.6	114.68	9.9		1+01°		#02837		1809 Clayton		3-12-81		
	124.4	114.73	9.7	1+26 <sup>5</sup>	2+02.5 TAP	+47°	23738	11425	1812 Clayton	1807 N. St. Paul	8-11-89	9-14-59	
2+00	124.1	114.88	9.2		2+41 <sup>3</sup>	+180	059759		1818 Clayton		2-4-77		
					+866	+168		11660		1819 N. St. Paul		10-22-59	
3+00	124.3	115.08	9.2		3+10.3	+53°	069446		1824 Clayton		9-20-78		
4+00	124.3	115.28	9.0		4+19.1	+177	117343	02793	1830 Clayton	1825 N. St. Paul	7-26-85	4-24-67	
	124.2	115.41	8.8	4+66 <sup>6</sup>	4+19.1	+177	063447		1838 Clayton		4-20-78		
					4+66 <sup>6</sup>	+177	15223	14832	1842 Clayton	1831 N. St. Paul	10-27-77	2-21-62	
					4+66 <sup>6</sup>	+177	063727		1842 Clayton	1837 N. St. Paul	10-27-77	8-6-61	
<i>CINE #2</i> 0+00	124.5	115.63	8.9	Existing MH.		+68°		060533	11537	1854 Clayton	1849 N. St. Paul	3-28-77	9-14-59
1+00	124.1	115.73	8.4	0+50'		+66°		10071		1843 N. St. Paul		4-22-59	
	124.0	115.84	8.2	1+06 <sup>5</sup>	4+56 <sup>6</sup>	SE & S.W.							
<i>CINE #3</i> 0+00	123.8	114.49	9.3	Existing MH.		+88°		048922		1803 Clayton		3-19-75	
1+00	123.9	114.69	9.2			+46 <sup>7</sup>							
						+61 <sup>6</sup>		048006		1809 Clayton		1-10-75	
2+00	123.7	114.89	8.8			+07 <sup>7</sup>	063968	048005	1806 N. Clayton	1815 Clayton	11-14-77	1-10-75	
						+13°	3223	047410	1810 N. Clayton	1825 Clayton	4-16-65	11-18-74	
	124.1	115.07	9.0	2+89 <sup>6</sup>		+20°		035063		1816 N. Clayton		9-26-72	
3+00	124.1	115.09	9.0			+79 <sup>5</sup>							
						+37 <sup>6</sup>		046816		1831 Clayton		9/25/74	
4+00	124.0	115.29	8.7			+39 <sup>6</sup>		01656		1818 N. Clayton		1-24-67	
						+98 <sup>6</sup>		046817		1837 Clayton		9/25/74	
5+00	123.7	115.49	8.2			+04 <sup>2</sup>	08904	046362	1828 N. Clayton	1843 Clayton	6-4-68	8-27-74	
						+59 <sup>4</sup>	025947	043980	1834 N. Clayton	1849 Clayton	7-28-71	3-15-74	
6+00	123.9	115.69	8.2			+20°	025946	043983	1840 N. Clayton	1855 Clayton	7-28-71	3-15-74	
	123.8	115.75	8.0	6+28 <sup>1</sup>		+18°							
<b>LAT. 10 SUB 10 S.S. 22</b>													
0+00	129.5	116.91	12.6	Existing MH.		+78 <sup>5</sup>		02597		3330 W. 16th		4-7-67	
1+00	128.7	117.11	11.6			+43 <sup>7</sup>		B4701		3320 W. 16th		12-3-65	
						+83 <sup>2</sup>		01587	05176	1712 N. Sheridan	1215 N. Sheridan	3-27-68	10-6-67
2+00	128.4	117.31	11.1			+65 <sup>1</sup>		05315		1720 N. Shaw		10-16-67	
3+00	127.5	117.51	10.0	3+00 <sup>7</sup>		+10 <sup>3</sup>		021067		1719 N. Sheridan		9-22-70	
						+19 <sup>0</sup>		010802		1727 N. Sheridan		10-3-68	
4+00	127.1	117.71	9.4			+28 <sup>2</sup>		10034				8-31-59	
5+00	128.2	117.91	10.3			+63°				1750 N. Shaw		4-10-59	
	128.2	118.05	10.1	5+70°									

#10332 tap 1813 N. St. Paul - Sheridan by 5-11-59 (2+11.6) tap C 29294 - 1750 N. Shaw - gas spooling 12-6-71 (3+31.4)  
 11356 tap 1739 N. Sheridan 2nd Pkwy. 8-31-59 (5+66)  
 11357 tap 1733 N. Sheridan 2nd Pkwy. 8-31-59 (5+03)  
 \*15918 tap 1730 N. Shaw 2nd Pkwy. 7-18-62 (3+31.7)  
 B4866 tap 3310 W. 16th - Gas Druffin 1-3-66 (0+60.2)  
 (line installed 5' east of West Property line and plugged)  
 #C1148 - Station - 3310 W. 16th - Bradford Services - 10-7-66 (0+60.2)  
 #C2278 - tap 3310 W. 16th - Gas Druffin 3-17-69 (0+56.6)