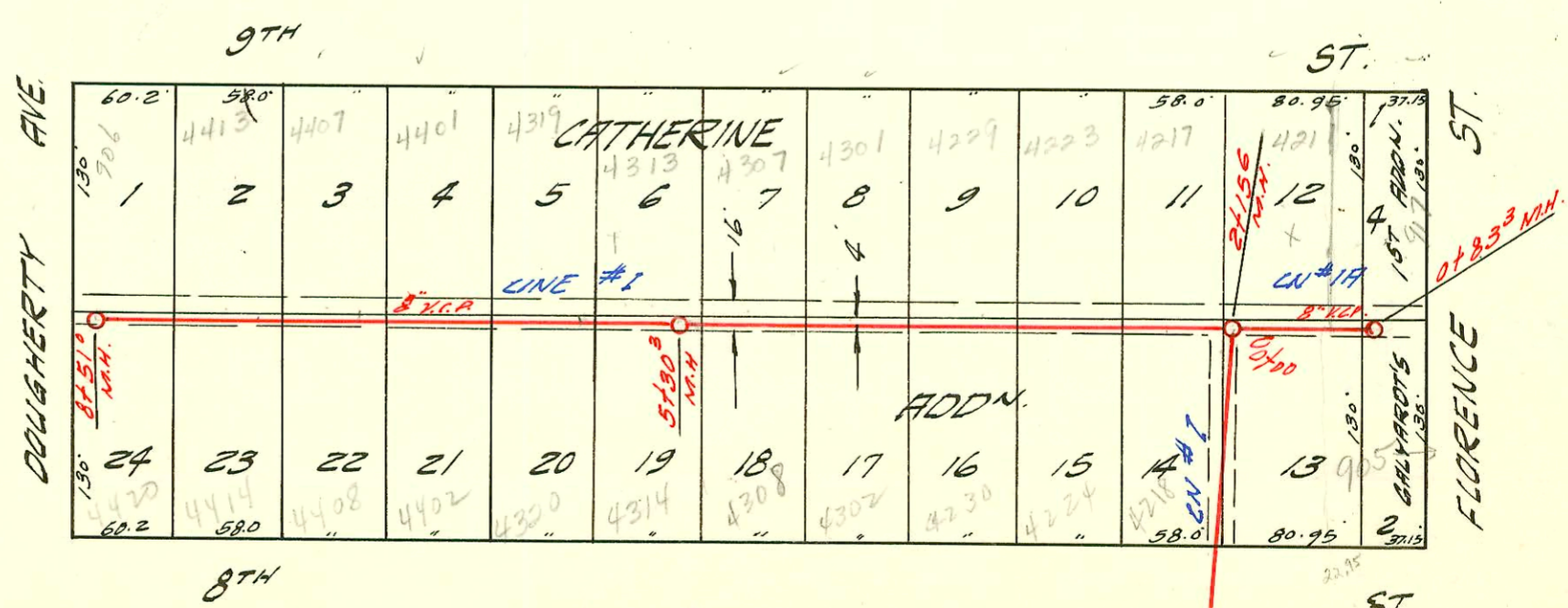
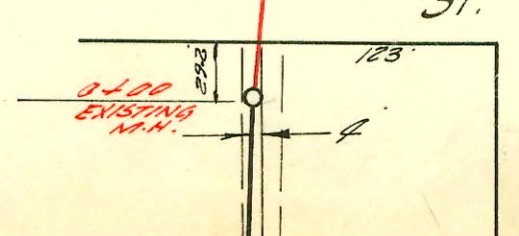


LAT. 93 SUB. 5 S.S. 22
 W.B. CARTER CONSTR. 4-1-59
 BK. NO. K-59 PROJ. NO. C 28-122



LAT. 91 SUB. 5 S.S. 22
 W.B. CARTER CONSTR. 4-1-59
 BK. NO. K-61 PROJ. NO. C 28-115



CONSTRUCTION RECORD

SERVICE RECORD

STATION	ELEVATION		Depth	MANHOLE	4-INCH "Y" BRANCHES		No. of Permit		House Number		DATE OF PERMITS		
	Ground	Grade			North West	South East	North West	South East	North West	South East	North West	South East	
LINE #1 0+00	124.0	114.01	10.0	EXISTING M.H.	+715	+695	9995		854 856 N. 320 W.			4-10-56	
1+00	124.4	114.41	10.0		+883	+257	B2144		48 W. 320 W.			10-13-64	
2+00	124.7	114.81	9.9		2+19.7	+186		15067 C19929	743 W. Elder			11-19-85 9-20-79	
	125.0	115.01	10.0	2+297	2+973	2+706	14188	B713	742 N. 320 W.	741 N. Elder		5-15-61 1-22-64	
3+00	125.0	115.21	9.8			3+44.7 TAP		19697	739 Elder S	2 Bldg		11-23-87	
4+00	124.8	115.61	9.2		+260	+240	9994	9991	820 N. 320 W.	837 N. Elder		4-10-59 4-10-59	
5+00	124.6	116.01	8.6	5+200	5+630	+610	9993	9992	828 N. 320 W.	831 N. Elder		4-10-59 4-10-59	
6+00	124.7	116.41	8.3					15817	739 N. Elder			6-25-62	
7+00	124.2	116.81	7.4		+450	+340		17004	726 N. 320 W.	5319 W. Elder		4-24-62	
8+00	124.6	117.01	7.6	7+496	8+640			29627 12537	720 N. 320 W.			515/88 4-25-60	
9+00	124.4	117.61	6.8		+776			15742	717 N. Elder			6-12-62	
10+00	124.0	118.01	6.0										
	124.3	118.11	6.2	10+240	10+600 TAP			19443	5450 W. Central			10/29/87	
11+00	124.2	118.41	5.8		+398								
					11+732	11+593		18948 13324	15528	5318 W. Central			8-28-81 9-17-60
LINE #1A 0+00	124.5	118.77	5.7	11+894									
	124.3	118.18	6.1	EXISTING M.H.	+875 (N.S.)	+982 (S.E.)		13269 13270	714 W. 320 W.	706 N. 320 W.		8-30-60 8-30-60	
1+00	124.2	118.60	5.6		4+340 1+002 (M.H.)			9996				4-2-95 4-10-59	
	124.1	118.64	5.5	1+105									
LINE #1 LAT. 91 0+00	121.3	116.82	4.5	EXISTING M.H. Y.N. Y.S.	+303	+323	9963	C3556	4217 W. W. 8th	4218 W. 8th		4-7-59 6-15-67	
1+00	121.6	117.02	4.6		+960	+980	9964	C3557	4223 W. W. 8th	4224 W. 8th		4-7-59 6-15-67	
2+00	122.0	117.22	4.8		+566	+586	9965	C3558	4229 W. W. 8th	4230 W. W. 8th		4-7-59 6-15-67	
	121.8	117.25	4.5	2+156	+043	+063	9966	C3559	4301 W. W. 8th	4302 W. 8th		4-7-59 6-15-67	
	121.8	117.34	4.5		+610	+630		C11856		4388 W. W. 8th		12-6-68	
3+00	121.5	117.52	4.0		+210	+230	10000	C19518	4307 W. W. 8th	4314 W. W. 8th		4-7-59 6-1-70	
4+00	122.2	117.72	4.5		+859	+879	9961	C19519	4313 W. W. 8th	4320 W. W. 8th		10-21-81 1-22-88	
5+00	125.0	117.92	6.1		+429	+449	10147	C19520	4401 R. W. 9th	4402 W. W. 9th		4-29-59 6-1-70	
6+00	126.6	118.12	8.5		6+994			70180	4401 R. W. 9th	4402 W. W. 9th		1-2-01 4-21-59	
7+00	124.9	118.32	6.6		+606	+626		C19521	4408 W. W. 9th	4414 W. W. 9th		6-1-70 6-1-70	
8+00	125.3	118.52	6.8		8+200	+220	10229	C19523	4406 W. W. 9th	4407 W. W. 9th		5-5-59 6-1-70	
	126.0	118.62	7.4	8+510	8+340 TAP			23454	406 W. Dougherty	4408 W. W. 9th		6-29-89	
LINE #1A 0+00	121.9	117.86	4.5	EXISTING M.H.	+110	+130	11411	200151424	4211 W. W. 9th	905 NR see below		9-9-59 11-3-94	
	121.7	117.52	4.2	0+833	+593	+613	11411	200151424	4211 W. W. 9th			6-11-01 7-30-64	

2001-01424-61161-905 N Florence St- Right Way P1bg- 4" Sch 40 23' W of MH 0+83 (0+61.3) IN WINCO, 3445

96-18602-7 11-6-86 739 N Elder Deid Sokale-

C5657- 725 W Elder - Donald Thompson - 11-8-67-top (8+09.6)