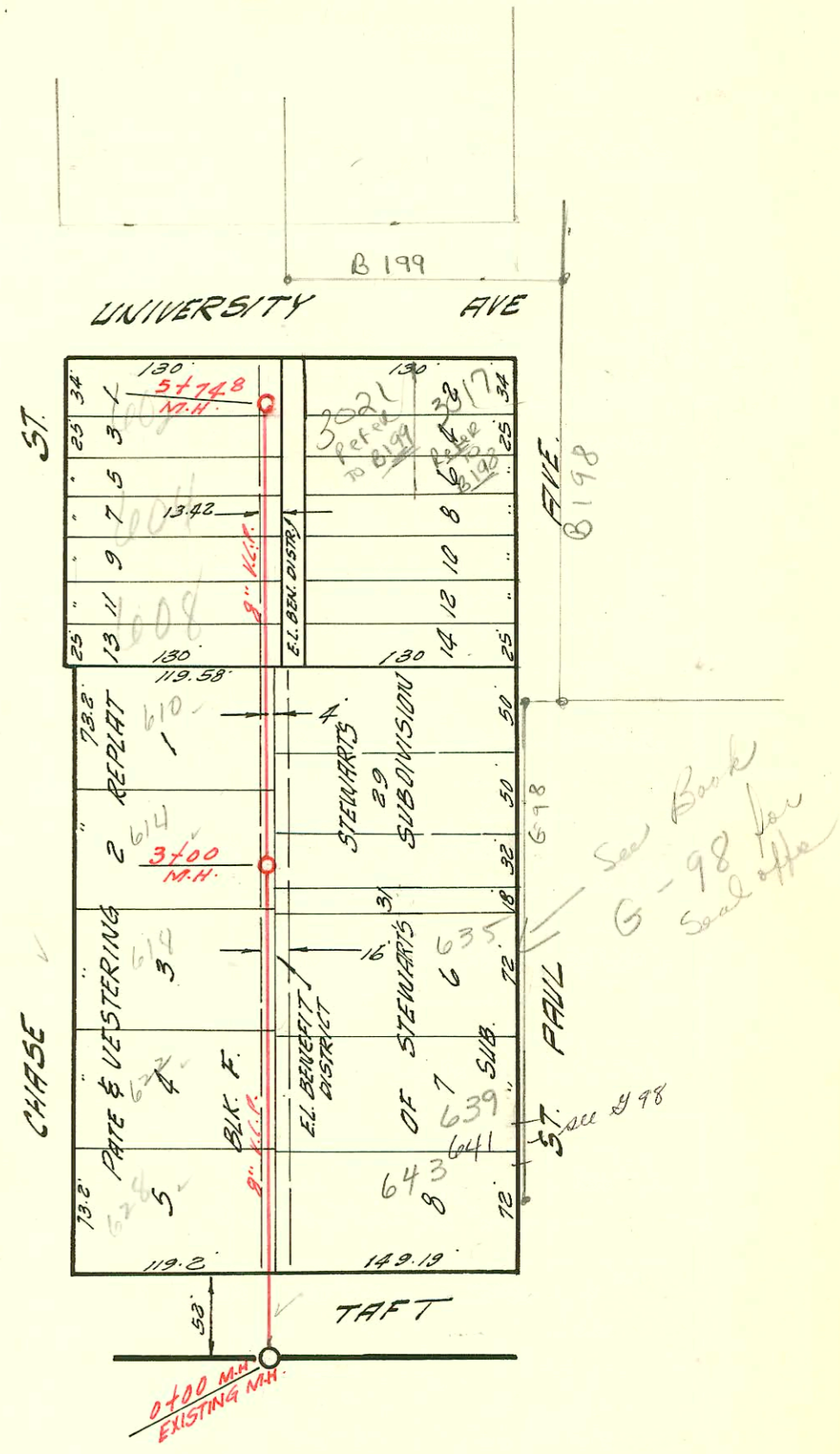
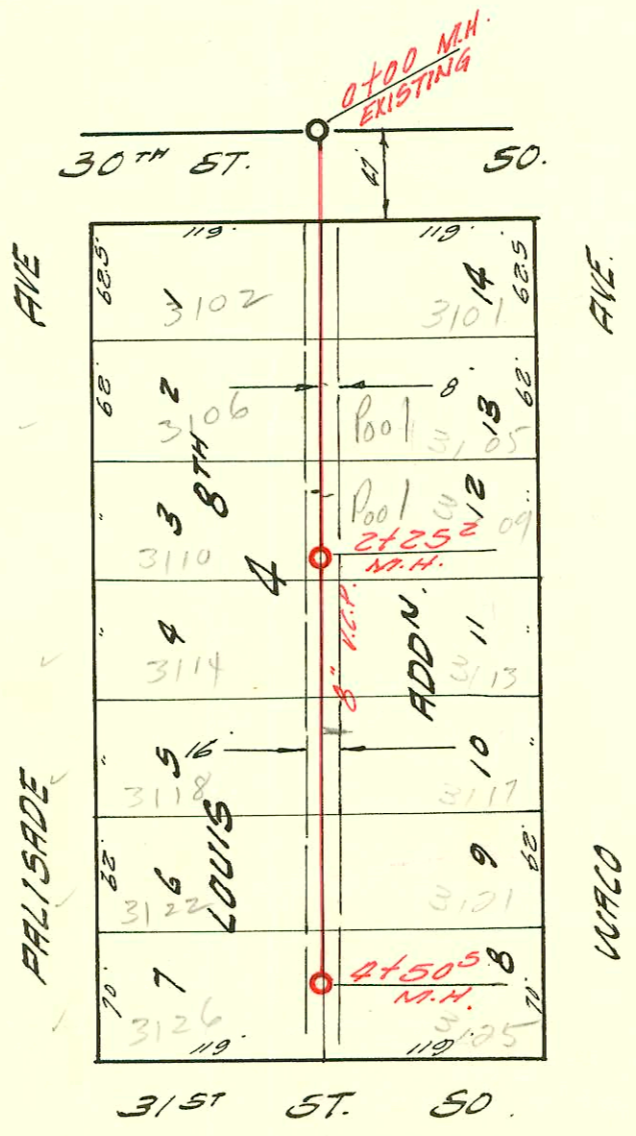


LAT. 49 S.S. 22  
W.B. CARTER CONSTR. CO. 4-17-59  
BK. NO. K-47 PROJ. # C28-13



LAT. 6 SUB. 15 S.S. 22  
W.B. CARTER CONSTR. CO. 4-17-59  
BK. NO. K-48 PROJ. # C27-93



LAT. 48 S.S. 22  
W.B. CARTER CONSTR. CO. 4-18-59  
BK. NO. K-47 PROJ. # C2812

CONSTRUCTION RECORD

SERVICE RECORD

STATION	ELEVATION		Depth	MANHOLE	4-INCH "Y" BRANCHES		No. of Permit		House Number		DATE OF PERMITS	
	Ground	Grade			North West	South East	North West	South East	North West	South East	North West	South East
<b>LAT. 49, S522</b>												
0+00	92.9	88.64	4.3	Existing M.H.								
					+71°	+69°	10852	17369	3102 S. Waco	3101 S. Wichita	7-10-59	11-25-60
1+00	93.6	88.79	4.8									
					+312	+292	11154	12520	3106 S. Waco	3105 S. Wichita	8-6-59	4-20-60
					+95°	+93°		12313		3189 S. Wichita		2-12-60
2+00	94.0	88.94	5.1									
	93.8	88.98	4.8	2+254								
					2+593	✓+573	11394	13069	2112 R. Waco	3118 S. Wichita	9-13-59	2-11-60
3+00	93.2	89.09	4.1									
					+195	3+175	10210	12794	3118 S. Waco	3119 S. Wichita	10-4-67	5-24-60
					+791	4+175	11595	16436	3122 S. Waco	3121 S. Wichita	10-6-59	12-3-60
4+00	94.2	89.24	5.0									
					4+382	+372	11900	183249	3126 S. Waco	3125 S. Wichita	11-25-59	4-21-65
	94.5	89.32	5.2	4+50°								
<b>LAT. 6 SUB. 15 S.S. 22</b>												
0+00	113.0	105.88	7.1	Existing M.H.								
					+834	+814	10177	149409	624 Chase	643 S. St. Paul	4-28-59	5-8-75
1+00	112.0	106.08	5.9									
					+64°	+62°						
3+00	111.8	106.28	5.5									
					+185	+205		149408		655 S. St. Paul		5-8-75
3+00	112.5	106.48	6.1	3+00								
					+122							
						+31°						
4+00	112.3	106.68	5.6				11272		618 S. Chase		8-27-59	
					+754	+734						
5+00	111.6	106.88	4.1									
					+355	+335						
					+035	+015						
	111.4	107.03	4.4	5+748			10569		607 S. Chase		6-8-59	
					+49°	+47°						
<b>LAT. 48 S.S. 22</b>												
0+00	93.5	89.08	4.4	Existing								
					0+713	+693	11970		3102 S. Palisade		12-8-59	
1+00	94.2	89.23	5.0									
					+315	+295	10461	11892	3106 S. Palisade	3105 S. Waco	6-3-59	9-3-59
					+924	+904	11596	11203	3110 S. Palisade	3109 S. Waco	10-6-59	8-13-59
2+00	93.9	89.38	4.5									
	93.6	89.42	4.2	2+252								
					4" SCH 40 (CO)		2000-00817		3114 R. Palisade	3113 S. Waco	3-31-60	9-3-59
					2+573	+553	10462	11393			6-3-59	
3+00	93.9	89.53	4.4									
					3+183	2+163	10249	10854	3118 S. Palisade	3117 S. Waco	5-11-59	7-10-59
					3+821	+801	10248	15875	3122 S. Palisade	3121 S. Waco	5-11-59	7-11-62
4+00	94.4	89.68	4.7									
					4+382	+362	10247	12795	3126 S. Palisade	3125 S. Waco	5-16-61	11-9-70
	94.5	89.76	4.7	4+505							5-11-59	5-24-60

2001-02690-10/25/01- Reddy Rootr- 3121 S Wichita- 4" SCH 40- Replaced all but lower 2', 1H22, 1 TWI@house

- 10100 Tap 614 Chase Key-mcLay 4-28-59
- 10176 Tap 622 Chase Key-mcLay 4-28-59 11405
- 10099 Tap 614 Chase Key-mcLay 4-28-59 21425
- 10570 Tap 608 Chase Key-mcLay 6-8-59 11475
- 10571 Tap 608 Chase Key-mcLay 6-8-59 4425
- 10853 Tap 3101 S Waco Robert Jant 7-10-59 0194
- 11204 Tap 3110 S Waco Robert Jant 9-8-59 21019