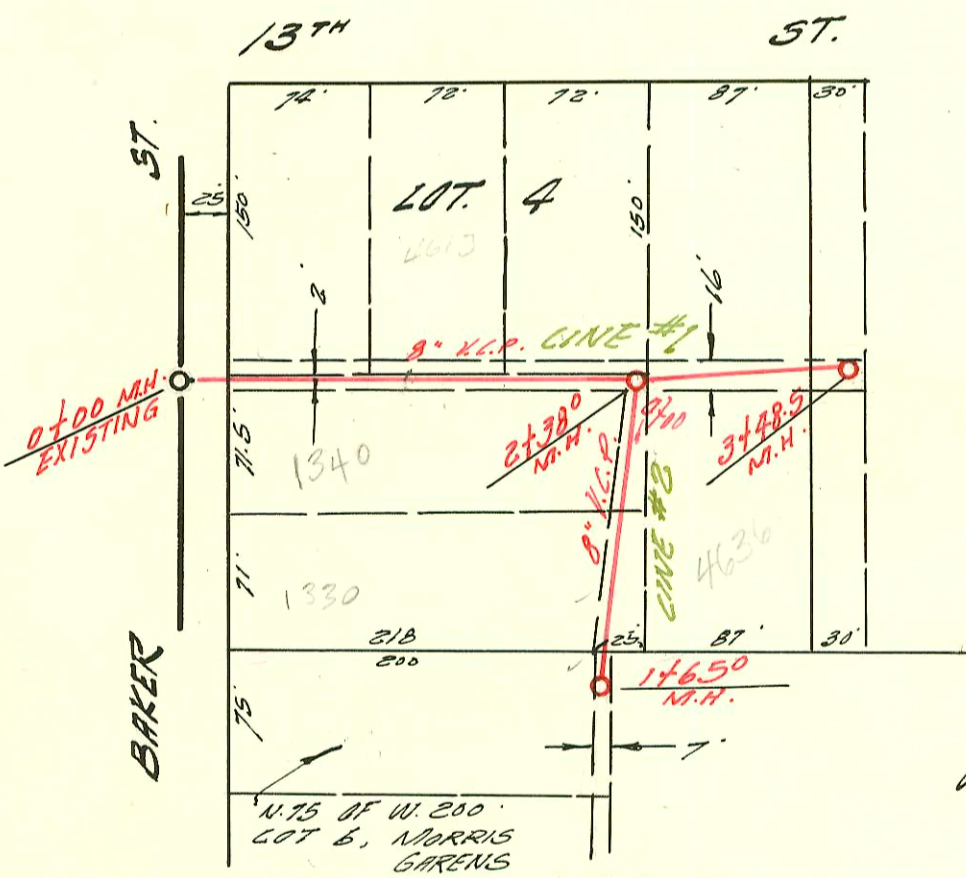
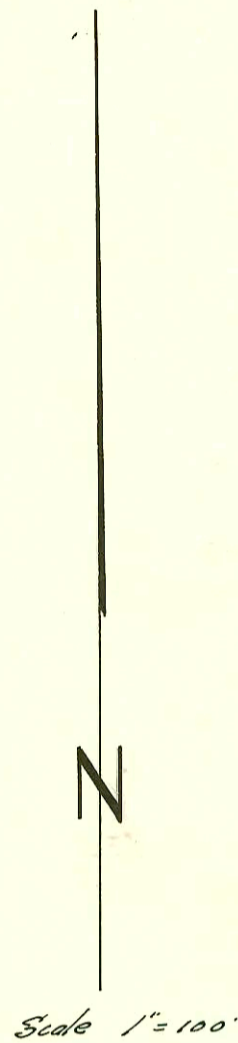
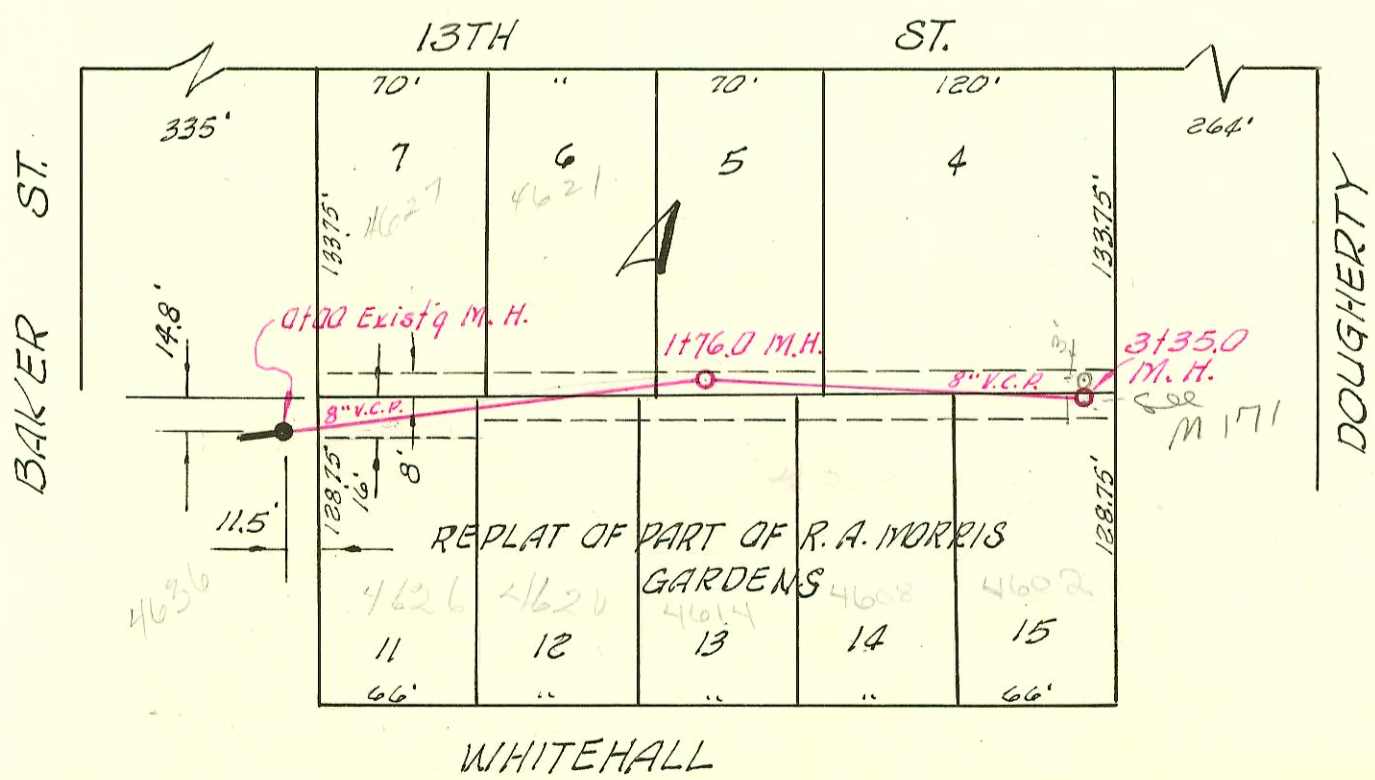


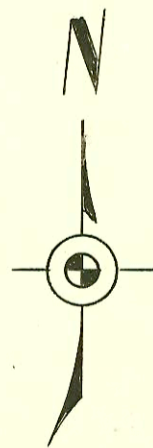
LAT. 10 DIST. R 5.S.20  
 W.B. CARTER CONSTR. CO. APRIL 24 '59  
 BK. NO. K-58 PROJ. NO. C28-37



LAT. 85 SUB. 5 S.S. 22  
 W.B. CARTER CONSTR. CO. APRIL 24 '59  
 BK. NO. K-50 PROJ. NO. C28-103



LAT. 163 SUB. 5, S.S. 22  
 W.B. CARTER CONST. CO. DEC. 1961  
 BK. K-69, PROJ. NO. C21-10



### CONSTRUCTION RECORD

### SERVICE RECORD

STATION	ELEVATION		Depth	MANHOLE	4-INCH "Y" BRANCHES		No. of Permit		House Number		DATE OF PERMITS	
	Ground	Grade			North West	South East	North West	South East	North West	South East	North West	South East
LAT. 10 DIST. R. S.S. 20												
0+00	122.3	115.39	6.9	Existing M.H.		+356 <sup>ENV</sup>						
1+00	122.0	115.49	6.5									
2+00	121.5	115.59	5.9	1+98 <sup>6</sup>								
3+00	120.8	115.69 115.79	5.1 5.0	2+98 <sup>8</sup>	+14 <sup>3</sup> (NK)		B4755 B4754		17337 18 <sup>TA</sup> 17172 18 <sup>LA</sup>		12-13-65 12-13-65	
4+00	121.0	115.89	5.1		+218 +286 +98 <sup>5</sup>	+96 <sup>5</sup>	13573	#16976	1842 1841 Woodrow Woodrow		11-23-60 4-18-63	
	121.5	115.96	5.5	4+69 <sup>7</sup>	+475 4" ABS 6" 6" 6" S.E.	+457	94-199817 33813		184 1831 Woodrow		12-14-94 7-23-65	
LAT. 85 SUB. 5 S.S. 22												
CONE #1 0+00	126.9	118.83	8.1	Existing M.H. Y.W.		Y. 50						
1+00	127.0	119.23	7.8		+58 <sup>5</sup>		10079		4647 W 13 <sup>th</sup>		2/22/59	
2+00	127.8	119.63	8.2		+16 <sup>5</sup>	+18 <sup>5</sup>	#16904		4647 W 13 <sup>th</sup>		4-3-63	
	128.4	119.78	8.6	2+38 <sup>0</sup>	+16 <sup>0</sup>		10073		4635 W 13 <sup>th</sup>		2/22/59	
3+00	129.1	120.03	9.1		+90		10077		4636 W 13 <sup>th</sup>		2/22/59	
	128.5	120.23	8.3	3+48 <sup>5</sup>		2+92 <sup>5</sup>	C26048		4636 Whitehall		7-10-70	
CONE #2												
0+00	128.3	119.86	8.4	Existing M.H. Y.W.		Y. E						
1+00	127.3	120.23	7.1		+96 <sup>0</sup>		12008		1330 Baker		11-27-59	
	126.5	120.54	6.0	1+65 <sup>0</sup>	+56 <sup>0</sup>	+54 <sup>0</sup>	C61402		1320 Baker		6-3-77	
LAT. 163, SUB 5, S.S. 22												
0+00	127.4	120.40	7.0	0+00 Existing M.H.								
1+00	127.4	120.60	6.8		0+33 <sup>0</sup>	0+35 <sup>0</sup>	C58185		4620 Whitehall		10-15-76	
					1+00 <sup>0</sup>	1+02 <sup>0</sup>	C59351		4621 W 13 <sup>th</sup>		10-26-76	
2+00	127.1	120.75 out 120.85 in	6.3 6.2	1+76 <sup>0</sup>	+766 <sup>0</sup>	+764 <sup>0</sup>			4614 Whitehall			
	127.1	120.90	6.2		2+44 <sup>0</sup>	2+20 <sup>0</sup>	C39043	57436	4523 W 13 <sup>th</sup>	4608 W 13 <sup>th</sup>	5-16-73	8-27-76
					2+81 (3" riser)	2+85.4	15017	57435	4523 W 13 <sup>th</sup>	4608 W 13 <sup>th</sup>	12-5-61	8-27-76
3+00	128.5	121.10	7.4		2+95 <sup>8</sup>	2+93 <sup>8</sup>	15018		4523 W 13 <sup>th</sup>		12-5-61	
	129.1	121.17	7.9	3+35 <sup>0</sup>								

10146 Top 1340 Baker 5-4-59 Reynolds 1+13  
 15416 Top - 1848 Woodrow Ct - 4-4-62 - Bott. Post (2+13.6)