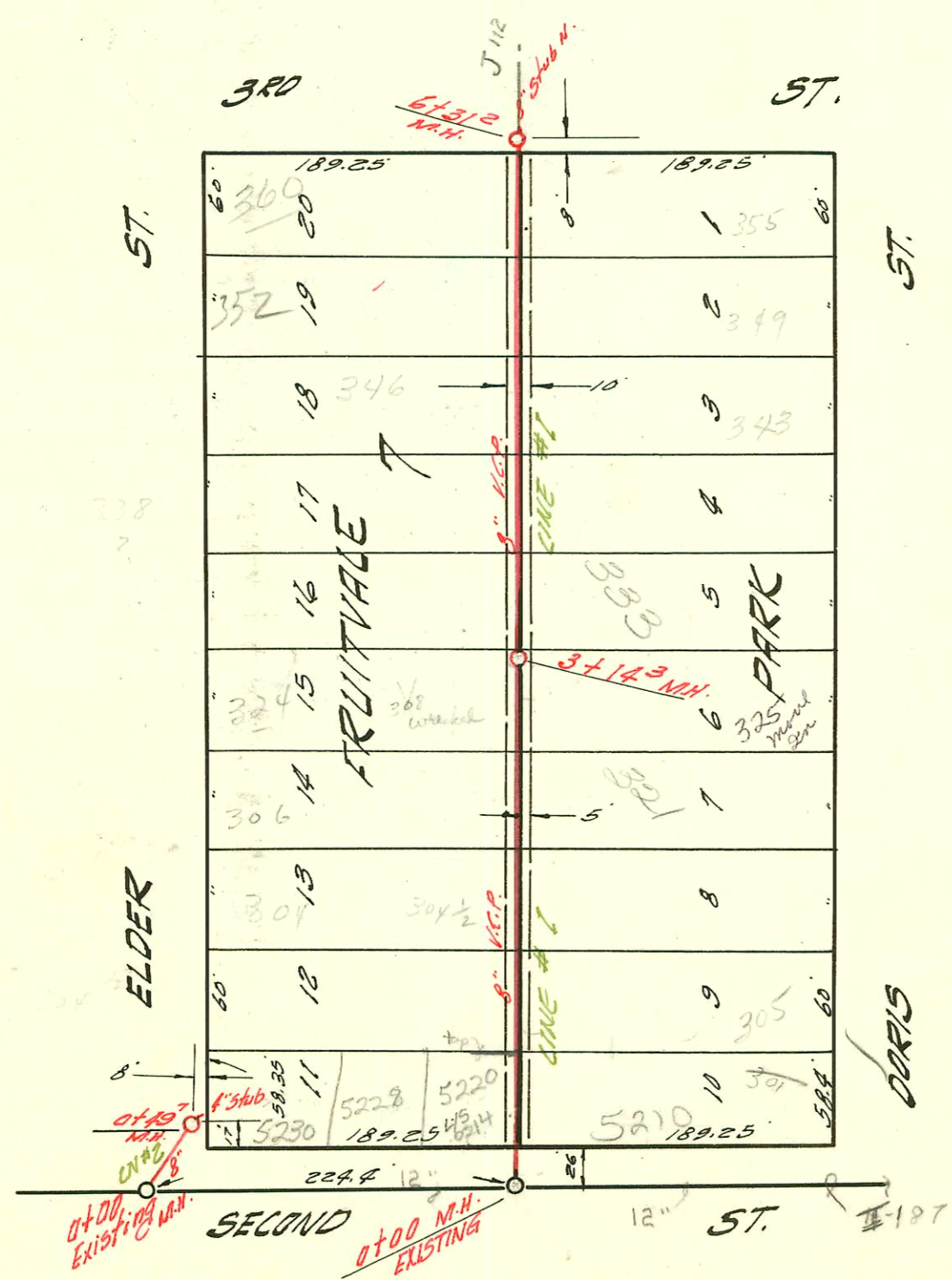


LATERAL 68 D.C.S. 65.12
 UTILITY CONTRACTORS INC. APRIL 28 '59
 BK. NO. K-49 PROJ. NO. C28-125



LAT. 98 SUB. 5 S.S. 22
 W. B. CARTER CONSTR. CO. APRIL 30 '59
 BK. NO. K-51 PROJ. NO. C29-4

CONSTRUCTION RECORD

SERVICE RECORD

STATION	ELEVATION		Depth	MANHOLE	4-INCH "Y" BRANCHES		No. of Permit		House Number		DATE OF PERMITS	
	Ground	Grade			North West	South East	North West	South East	North West	South East	North West	South East
<i>CINE #1</i> 0+00	118.7	112.84	5.9	NEW. M.H.		+594		10357		2117 Bluff Ct		5-13-59
1+00	121.7	113.84	7.9		+258		13875		2115 Bluff Ct		2-17-61	
2+00	122.2	114.84	7.4									
3+00	122.6	115.20	7.4	2+35°								
4+00	123.6	115.84	7.8		+96 ³	+725						
5+00	124.2	116.84	7.4		+152	+4182	#131217	16354	2131 Bluff Ct	2138 Bluff Ct	5-8-64	11-14-62
6+00	124.8	117.19	7.6	4+325								
<i>CINE #17</i> 0+00	122.3	115.40	6.9	EXISTING M.H.	+50° (NW)		10904		2113 Bluff Ct		7-13-59	
1+00	122.4	116.30	6.1		+208 (NW)							
2+00	122.8	116.65	6.1	1+336								
<i>CINE #18</i> 0+00	122.8	115.36	7.4	EXISTING M.H.			12104	12955	2119 Bluff Ct	2121 Bluff Ct	12-21-59	6-16-60
1+00	123.3	115.82	7.5	0+527	4" Sub S.E. 4" Sub S.W.							
<i>CINE #2</i> 0+00	123.7	114.80	8.9	NEW. M.H.		0+798		10356		2109 Bluff Ct		5-13-59
1+00	125.3	116.80	8.5		+90°	+770	10491		2101 Bluff Ct		6-10-59	
2+00	129.8	118.80	11.0		+533		#16220		2105 Bluff Ct		10-8-62	
3+00	132.5	120.20	12.3	2+75°								
<i>CINE #3</i> 0+00	125.6	118.00	7.6	EXISTING M.H.			116595		3729 Bluff Ct		2-4-63	
1+00	128.2	119.30	8.9		4" Sub NE 4" Sub SE		#14225		3755 Bluff Ct		6-7-61	
2+00	129.8	120.17	9.6	1+536	4" Sub S.W. 4" Sub N.W.							
3+00	129.5	120.51	9.0	1+910								
<i>CINE #4</i> 0+00	125.8	117.50	8.3	EXISTING M.H.	4" PVC 40 4" M.H. Stub 8" Sub NE 4" Sub S.E.		18355 17995		3725 Bluff Ct 3721 Bluff Ct		5-13-59 12-17-59	
1+00	124.5	118.39	6.1	0+883								
2+00	127.98	118.5	3.5	3.5. 22								
<i>CINE #1</i> 0+00	120.5	112.05	8.4	EXISTING M.H.	Y. W. Y. E.		21866 22251	5220 W 2nd	301 N 3rd		7-17-75	11-8-88
1+00	120.8	112.25	8.5		top 0+843	+049.0	21866 22251	5220 W 2nd	301 N 3rd		7-17-75	2-2-60
2+00	119.0	112.45	6.5		+063 +65°	+042 +63°	CM032		304 N 3rd Elder		5-12-69	
3+00	119.4	112.65	6.7		+340 +898	2+320 2+878	17729 14903	10664	306 N 3rd Elder	321 N 3rd	4-4-68 7-29-64	6-18-59
4+00	119.2	112.68	6.5	3+143	4" ABS. 50' 40 2+90.9 Top	+358	22396	93:1320-701 7	324 N 3rd Elder	335 N 3rd Doris	11-22-66	5-26-93
5+00	119.0	112.85	5.1	3+378		+358	22396		312 N 3rd Elder	333 N 3rd Doris	11-27-64	8-12-63
6+00	120.6	113.05	7.5		+263 +65°	+043	81974 83876	10924	338 N 3rd Elder	337 N 3rd Doris	9-16-64 7-28-65	7-16-59
7+00	120.6	113.05	7.5		+849		4429		335 N 3rd Doris	333 N 3rd Doris	5-25-59	
8+00	120.2	113.25	6.9		+220 +723	+202	7642 70406	11845	342 N 3rd Elder	349 N 3rd Doris	3-29-68 5-22-59	11-12-59
9+00	120.0	113.31	6.7	6+312	8" Sub N.	+827						
<i>CINE #2</i> 0+00	120.9	112.30	8.6	EXISTING M.H.			14424		5239 W 2nd		7-10-61	
1+00	121.1	114.50	6.6	0+297	4" Sub N.E.							

#10646 Top 3717 E. Bank Ct. Bradford 6-16-59 (0+33 line #4) #27285-3-18-91 5210 W 2nd Jim Morris (69.0 top 4" SDR 35)

10647 Top 2127 Bluff Ct Bradford 7-7-59 (4+59)

11051 Top 2111 Bluff Ct Bradford 8-5-59 M.H. 1433 1/2

11302 Top 5228 W 2nd R. Bradford 8-17-59 1+29 81/203 Bobs SWR - 4" twin CO 14' from house, replaced 12' section of line 8' from house - 4" 40 PVC

11434 Top 2107 Bluff Ct Bradford 9-17-59 1+26

#12251 Top 301 N 3rd Doris Headpath 2-2-60 - 46 1/2' N. of M.H. in 2nd St.

12954 Top 123 Bluff Ct Bradford 6-21-60 (3125)

13851 Top 355 Bluff Ct Bradford 2-13-61 (5+74.2)