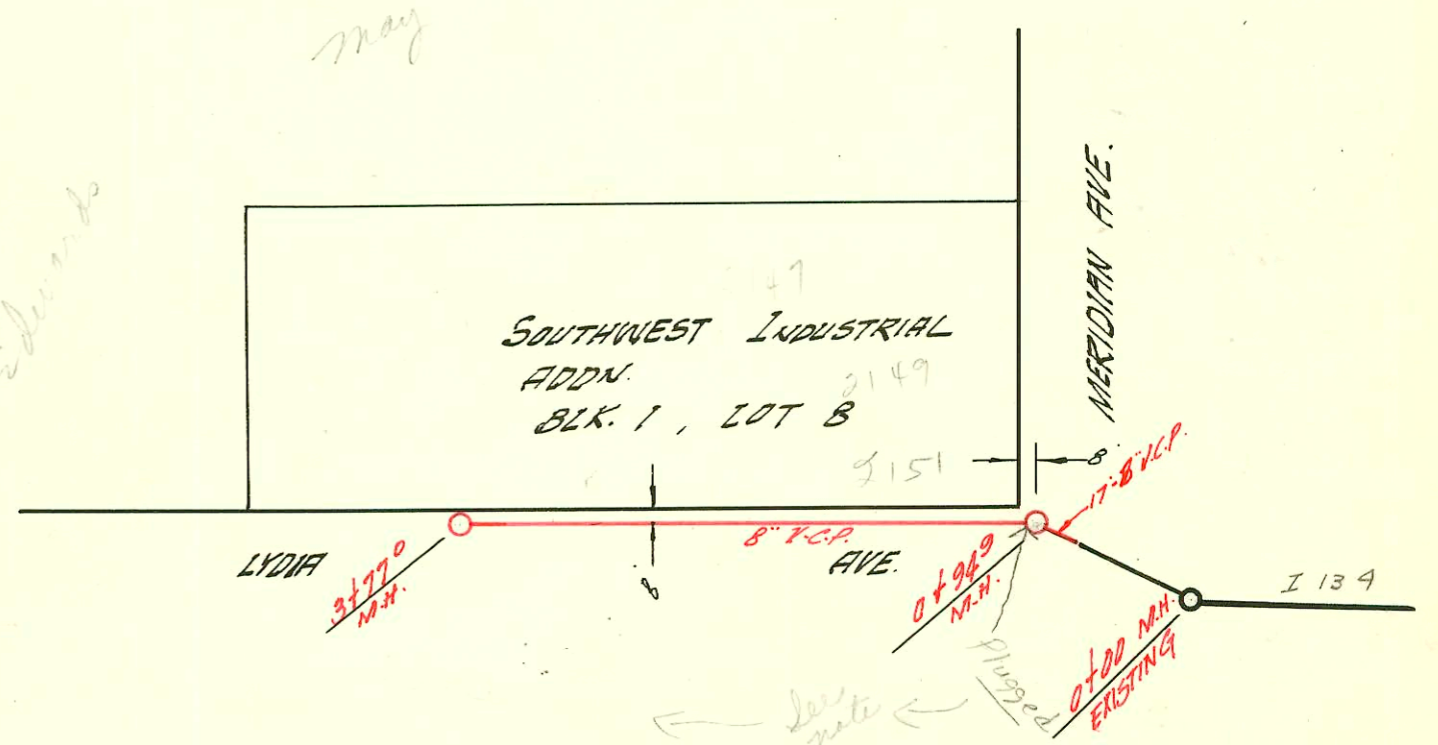
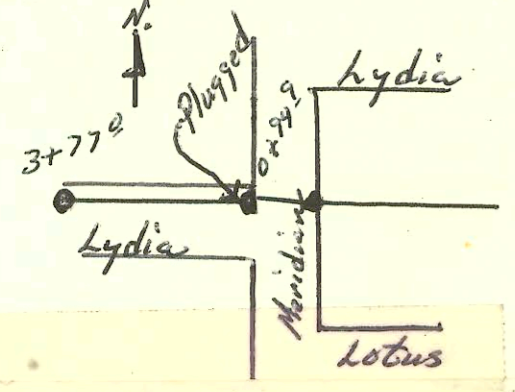


LATERAL 8 DIST. R. 55.20
 UTILITY CONTRACTORS INC., MAY 11 '59
 BK. NO. K-57 PROJ. NO. C-27-48

8-29-72
 Manhole Station 0+94.9
 in book J-52 has
 been plugged off.
 Before any permits
 are issued for bldg.
 connections W. of M.H.
 Station 0+94.9 let Renner
 know.



EXT. LAT. 7 SUB. 3 S.S. 22
 PRIVATE CONTRACT 5-20-59

CONSTRUCTION RECORD

SERVICE RECORD

LINE #1

STATION	ELEVATION		Depth	MANHOLE	4-INCH "Y" BRANCHES		No. of Permit		House Number		DATE OF PERMITS	
	Ground	Grade			North-West	South-East	North-West	South-East	North-West	South-East	North-West	South-East
0+00	122.5	113.80	8.7	EXISTING MH.								
1+00	120.6	113.90	6.7									
2+00	119.9	114.00	5.9	2+00.5								
	121.0	114.04	7.0	2+37.5								
3+00	121.5	114.10	7.4		2+92°(N)		#11694		180 Perry		8-10-59	
					2+31.0 top		21691-7		1801 add Cann		5-6-61	
					3+55°(N)		10887		1710 W		7-17-59	
4+00	121.7	114.20	7.5		4+09°(N)		24397		1712 W		12-1-59	
	120.9	114.27	6.6	4+70°			10886		17th			
5+00	120.6	114.40	6.2									
	120.7	114.50	6.2	5+97°								
6+00		114.60	6.1									
7+00	121.9	114.70	7.2		7+07.7		074364		1805-07		9-18-79	
	119.5	114.72	4.8	7+15°								
8+00	122.0	114.80	7.2		8+74°		074365		1813		1-5-60	9-18-79
	121.6	114.84	6.8	8+39°			12141		1809-11			
9+00	121.4	114.90	6.5		9+49°		12372		1817		3-23-60	
					9+79.5 top		93-1946-7		1821		7-23-93	
10+00	121.2	115.00	6.2		10+43°		14815		1825		10-11-61	
					10+14							
					10+64°		14920		1833		11-8-61	
11+00	121.8	115.10	6.7	10+90°								
					11+22°							
					11+84°		16474		1839		12-13-62	
12+00	121.9	115.20	6.7		12+43°		0353		1847		11-4-63	
13+00	122.4	115.30	7.1		13+00°							
	123.0	115.35	7.6	13+44°								
LINE #2	0+00	120.8	114.81	6.0	EXISTING MH.							
1+00	119.3	114.93	4.4		1+05°	1+05°	B2251		1805		11-5-67	
	119.6	114.98	4.6	1+56°								
2+00	119.8	115.02	4.8		2+97°	2+74°	10270	B3475	1824	1815	5-14-59	5-25-65
3+00	120.1	115.12	5.0		3+68°	3+50°	10271	B5480	1828	1825	5-14-59	4-20-66
4+00	120.1	115.21	4.9	3+89°	4+36°	4+14°	#B3474		1835		5-25-65	
	120.3	115.22	5.1		4+18°	4+20°	15773	B543	1836	1809	6-15-62	12-9-63
5+00	120.6	115.32	5.3		5+00°	5+02°	12465	B395	1840	1829	4-6-60	7-15-65
	120.6	115.39	5.2	5+63°	6+54°	N.W.	13093		1846		7-18-60	
LINE #3	0+00	120.1	115.31	4.8		6+42°(N)	6+40°(S)	17245	1805 W		10-17-61	
	122.1	115.39	6.7	0+85°	8+54° E	8+57° N.E			1825		6-10-63	
EXT. LAT. 7				SUB. 3	S.S. 22							
0+00				Existing MH.								
	103.1	95.00	8.1	7+94°								
1+00	103.1	95.02	8.0									
2+00	103.0	95.22	7.8									
3+00	103.0	95.42	7.6									
	103.0	95.57	7.4	3+77°	3+46°(N)	3+69°(N)	10645		2147		6-16-59	

#10583 - top - 1832 Perry St - S. Meridian - Al Kenning 6-16-59 (3+39)
 #12372 - top - 1801 Perry St - S. Meridian - Leo Justice 5-22-59 (3+41)
 #12963 - top - 1801 Perry St - S. Meridian - Leo Justice 6-28-60 (4+23)
 #14773 - top - 1829 S. Meridian - S. Hillard - 10-5-61 (4+89.3)
 #14980 - top - 1801 S. Meridian - S. Hillard - 11-27-61 (5+54.8)
 #16509 - top - 1814 S. Meridian - Justice Pkg - 1-8-63 (1+71.2)
 #B2675 - top - 1845 Woodrow Cl - Justice Pkg - 1-15-65 (0+45.1 line 2A)