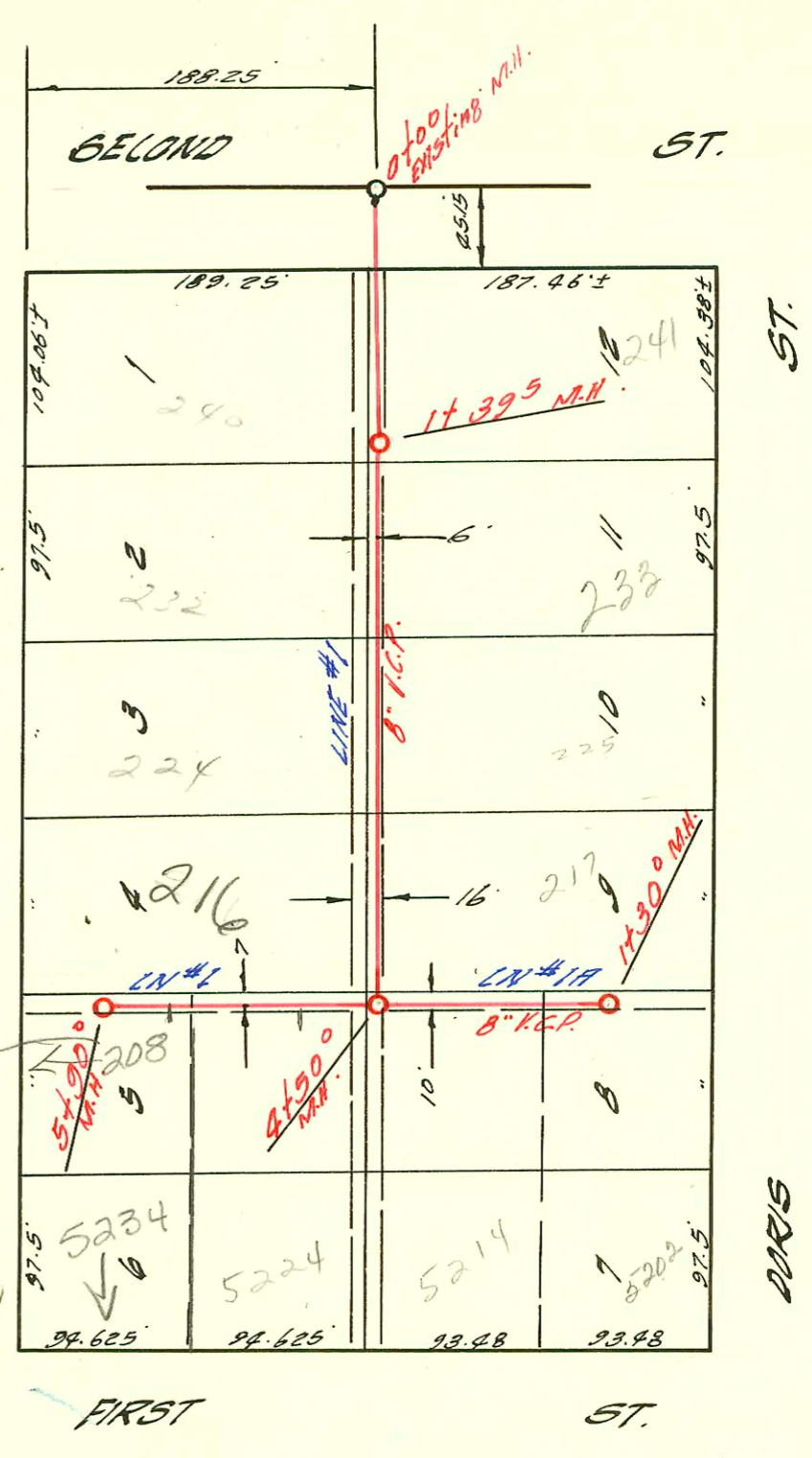


SABIN  
 208 N Elder St  
 Not Conn. to city sewer  
 City out there and pay for it  
 Also need permit for 5234 w/ BK # 101280  
 ELDER ST  
 9/23/63



LATERAL 86 SUB. 5 S.S. 22  
 UTILITY CONTRACTORS INC. JUNE 22 '59  
 BK. NO. K-44 PROJ. # C28-110

LATERAL 102 SUB. 5 S.S. 22  
 UTILITY CONTRACTORS INC. JUNE 22 '59  
 BK. NO. K-453 PROJ. NO. C29-9

CONSTRUCTION RECORD

SERVICE RECORD

STATION	ELEVATION		Depth	MANHOLE	4-INCH "Y" BRANCHES		No. of Permit		House Number		DATE OF PERMITS	
	Ground	Grade			North West	South East	North West	South East	North West	South East	North West	South East
0+00	119.1	112.63	6.5	Existing M.H.								
1+00	119.5	113.03	6.5		1+00.0 <sup>6</sup> +02°		6669 661234 (repair) C44160	14367	200 N Young 212 N Young	207 N Sabin	10-4-82 5-20-77 3-27-74	6-27-61
2+00	119.9	113.43	6.0		+89° +1+67			C26512	220 N Young 219 N Sabin	207 N Sabin		8-16-71
3+00	118.9 119.0	113.83 113.87	5.1 5.1	3+10°	+57° +85°		C44897 C44143 11011	CONN.	220 N Young 224 N Young	219 N Sabin	5-16-74 7-28-59	?
4+00	119.4	114.23	5.2		+89.5 3+92.5	4" SCH 40 3+48°		2000-00095 10786	223 N Sabin 235 N Sabin	R-see below	1-12-00 7-2-59	3-31-60
5+00	119.7	114.63	5.1		+89.5 3+92.5 4+03°		C23491 C99-012-01 10757 1200		223 N Sabin 227 N Sabin		3-29-71 6-18-49 6-30-59 7-1-55 8-13-59	10-29-59
6+00	119.9 119.9	115.08 115.15	4.9 4.7	6+30°	5+83° 4" SCH 40 6+21		C24772 10782		226 N Young 255 N Young	251 N Sabin	6-7-71	7-2-59
LAT. 86 CN #1	120.0	118.20	7.8	Existing M.H.		4" STUBS 6+5 W	2000-00095 12644 CONN. (no permit)		226 N Young 255 N Young		3-14-00 4-26-84 6-19-59	
1+00	120.0	118.40	7.6									
2+00	119.6	112.48	7.1	1+395	+07°			12336	240 N Sabin	241 N Sabin	2-18-60	3-14-60
3+00	119.4	112.60	6.8		+05°			11482		233 N Sabin		10-8-59
4+00	119.2	112.80	6.4		+27°					225 N Sabin		2-3-61
5+00	119.0	113.00	6.0		+94.5		10762		220 N Sabin		6-30-59	
6+00	118.6	113.19	5.4	4+50°			15465		220 N Sabin		4-9-62	
7+00	118.9	113.30	5.6		+87° (H.S.)			10772		52-24 W lot		7-1-59
8+00	119.7	113.48	6.2	5+90°	5+56 (H.S.) +54° (H.S.)		#13-54 12938		52-24 W lot 523 N Sabin		10-28-02 8-21-63	6-13-60
9+00	119.3	113.21	6.1	Existing M.H.								
1+00	119.0	113.40	5.6		+20°			758 11550		52-14 W lot		9-16-80 9-17-59
2+00	119.4	113.46	5.9	1+30°	+11°			11458	217 N Sabin	5200 W lot	7-28-59	6-10-60

R-2000-00085-223 N Sabin-41/200-Heclungs-4" SCH 40-Duct-Tied to claytile without-2Turnco, AH22, 1V45, 1-4" Y, 1-4x2 Red

M/c 4629-245 N Sabin 11-9-81 Don Calman 6+30.0 S.

- #13313 tap 230 N Young Bowers Pkg. 9-7-60 (4+44) #186345-See 4/8-230 N Young-Bowers Pkg-9/16/66
- #13322 tap-221 N Sabin-Donaghe Pkg 9-14-60 (2+59) C-792-(4+44)-230 N Young-Bowers Pkg-New Conn. 11/6/66
- #13971 tap 226 N Young-La Joy Pkg 3-15-61 (3+61)
- #17423 tap 257 N Sabin-Geo. Kriffin-7-19-63-(6+27)