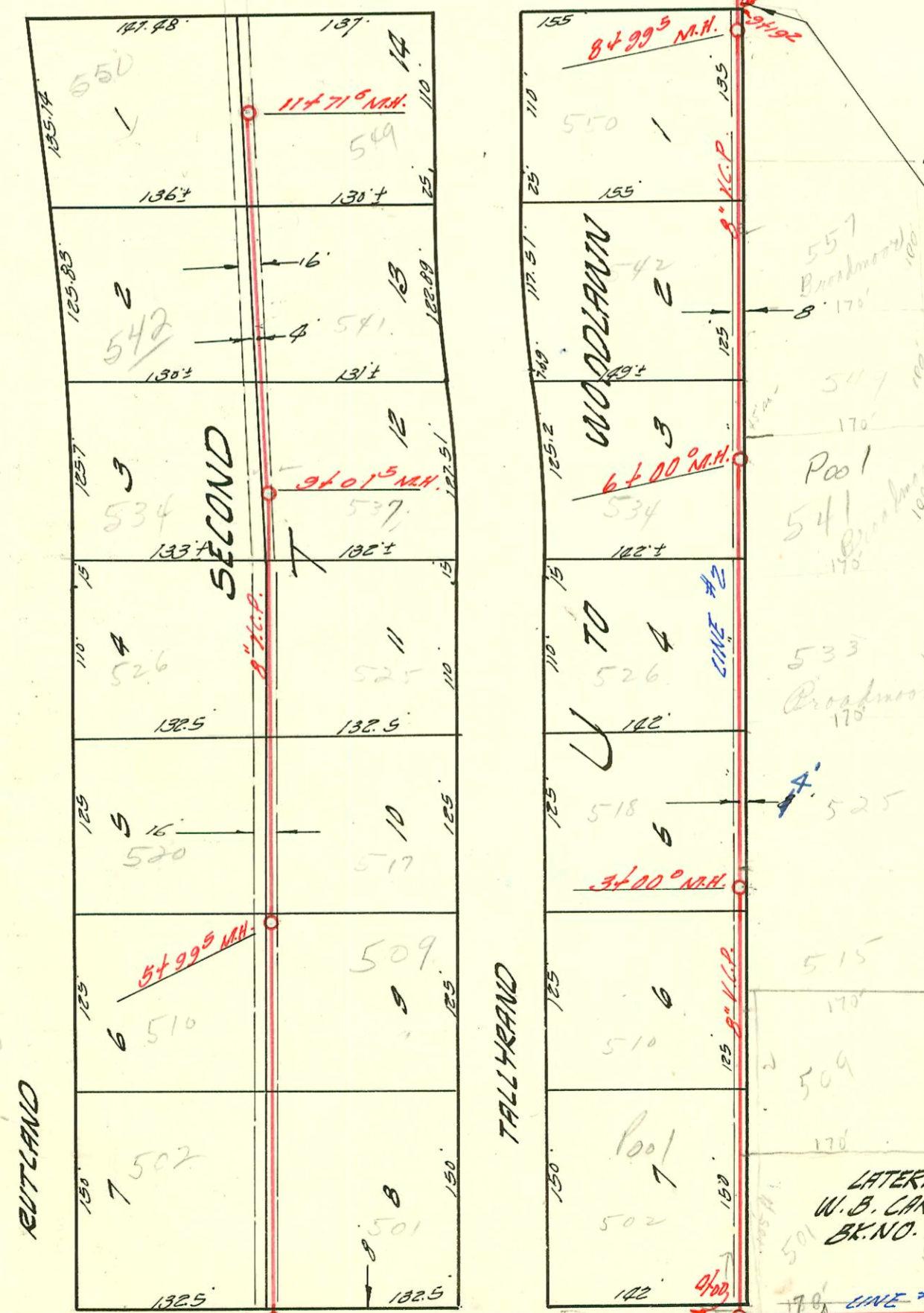


3rd
Worlestone Valley



Scale 1"=100'

LATERAL 11 SUB. 5A W.I.S.
W.B. CARTERS CONST. CO. JULY 13 '59
BK. NO. K-58 PROD. NO. 28-91



LATERAL 9 SUB. 5A W.I.S.
W.B. CARTERS CONST. CO. JULY 13 '59
BK. NO. K-58 PROD. NO. C 28-89

Rec. # 64768 25.00 apr. 1957 Broadmoor 2-5-65
B 22811 - top 557 Broadmoor - 2-5-65 (7+60.5)
B 3076 - top 657 Broadmoor - 4-12-65
B 3205 top 549 Broadmoor - Building Pkly. 2-2-65
B 4479 top 617 Broadmoor - Building Pkly. 11-6-65
B 4536 - top 509 Broadmoor - Building Pkly. 11-15-65
B 5570 - top 501 Broadmoor - Building Pkly. 5-5-66
C 1983 - top 565 Broadmoor - Building Pkly. 2-21-67
C 3701 - top 625 Broadmoor - Building Pkly. 6-23-67

Rec # 63089 25.00 apr. 1957 541 N. Broadmoor - Reynolds Pkly.
Top # 62699 - 541 N. Broadmoor - Reynolds Pkly. 2-2-65
Rec # 64760 - 533 N. Broadmoor - Reynolds Pkly. 2-2-65
Top # 2791 - 533 N. Broadmoor - Reynolds Pkly. 2-2-65
LATERAL 8 SUB. 5A W.I.S.
W.B. CARTERS CONST. CO. JULY 13 '59
BK. NO. K-51 PROD. NO. C 28-88
B-1574-609 Broadmoor - Building Pkly. 6-25-64 - top (2+41.5) Spec for Rec. 49051 - 4-25-64
B-1624-515 N. Broadmoor - Kennedy Pkly. 7-22-64 - top (2+19) Spec for Rec. 51016 - 3-5-64
B-1885-601 Broadmoor - Building Pkly. 2-11-64 - top (1+21.5) Spec for Rec. 51042 - 2-25-64
Top # 2154-633 Broadmoor - Building Pkly. 10-15-64 (top 5+12.5) Spec. for Rec. 51697
Top # 2464-525 Broadmoor - Kennedy Pkly. 12-9-64 - top (5+95) Spec for Rec. 51793 - 2-25-64

CONSTRUCTION RECORD

SERVICE RECORD

STATION	ELEVATION		Depth	MANHOLE	4-INCH "Y" BRANCHES		No. of Permit		House Number		DATE OF PERMITS	
	Ground	Grade			North West	South East	North West	South East	North West	South East	North West	South East
LAT. 11 SUB. 5A W.I.S.												
CINE #1 0+00	162.8	160.34	9.5	Flipped Cline								
1+00	171.5	160.54	11.0		+88 ⁵		#16466		734 Elm St.			12-10-62
2+00	171.6	160.74	10.9		+99 ⁵							
3+00	172.9	160.94	12.0		+18 ⁷		15490		734 Elm St.			4-12-64
4+00	174.0	161.14	12.9									
	171.9	161.17	10.7	4+12 ⁵								
		161.27	10.6		+55 ⁰		15645		732 P Elm St.			5-18-62
5+00	172.5	161.44	11.1									
6+00	171.8	161.64	10.2									
7+00	168.9	161.84	7.1									
	169.6	161.89	7.7	7+24 ⁰								
8+74 ²	End of Project											
LAT. 9 SUB. 5A W.I.S.												
CINE #2 0+00	162.4	162.98	6.4	Existing M.H.								
1+00	171.8	163.40	8.4		0+39 ⁰		15885		647 Rutland			7-12-62
2+00	173.6	163.80	9.8		+38 ⁵	+36 ⁵	15992		634 Rutland			8-8-62
					+27 ⁰	+25 ⁰	14779		626 Rutland			10-5-61
3+00	175.3	164.13	11.2	2+82 ⁸								
	175.6	164.23	11.1									
3+00	175.6	164.30	11.3		+24 ⁵		13860		618 Rutland			2-14-61
4+00	176.2	164.70	11.5		+15 ⁵							
					+38 ⁰	+36 ⁰	47087	81827	602 Rutland	7310 Elm St.		10-26-62
5+00	176.2	165.10	11.1									5-2-62
	175.7	165.30	10.4	5+50 ⁰								
LAT. 9 SUB. 5A W.I.S.												
CINE #1 0+00	161.8	156.00	5.8	Existing M.H.								
1+00	165.7	157.09	8.6									
2+00	167.8	158.18	9.6									
2+18.7	168.0	158.40	9.6	2+18.7								
		158.50	9.5	(8" sub. N.)								
LAT. 8 SUB. 5A W.I.S.												
CINE #2 0+00	168.3	158.50	9.8	Existing M.H.								
1+00	169.2	158.70	10.5		+37 ⁵		B1546		502 Tallyrand			6-19-64
2+00	169.1	158.90	10.2		+88 ⁵				510 Tallyrand			12-27-63
3+00	170.5	159.10	11.4	3+00 ⁰					510 Tallyrand			7-8-65
4+00	169.6	159.30	10.3		+10 ⁵							
5+00	169.6	159.50	9.1		+37 ⁰							
6+00	169.6	159.70	9.9	6+00 ⁰	+63 ⁰							
7+00	170.1	159.90	10.2		+85 ⁰		#16874		542 Tallyrand			4-1-63
8+00	169.9	160.10	9.8									
	169.5	160.30	9.2	8+99 ⁵	+10 ⁵		#4067		550 Tallyrand			4-12-61
9+19 ²	Project Ended. 160.34 Fl.											
LAT. 8 SUB. 5A W.I.S.												
0+00	168.2	162.42	5.8	Existing M.H.								
1+00	170.6	162.80	7.8									
2+00	173.4	163.20	10.2									
3+00	175.8	163.60	12.2									
	176.4	163.71	12.7	3+27 ⁵								
		163.82	12.6									
4+00	176.0	163.95	12.0		4+06 ⁵	+04 ⁵	13280	C3402	532 Rutland			7-6-60
5+00	175.9	164.15	11.7		5+34 ⁵	+32 ⁵	16551	8736	510 N. Tallyrand			8-1-72
	175.2	164.35	10.8	5+99 ⁵	top	5+02		C34039	509 Tallyrand			9-63
					top	5+73 ⁵		C34040	511 Tallyrand			8-2-72
					+62 ⁵	+60 ⁵	16064	15434	513 Tallyrand			8-22-62
7+00	174.3	164.55	9.7		+87 ⁰	+85 ⁰	#16829		525 Tallyrand			4-5-62
8+00	172.7	164.75	7.9									3-25-63
9+00	173.4	164.95	8.6	9+01 ⁵	+11 ⁰	+09 ⁰	1452	C31012	534 Tallyrand			2-21-61
10+00	173.8	165.15	8.6		+36 ⁵	+34 ⁵	10873		537 Tallyrand			3-15-72
11+00	174.8	165.35	9.4		+60 ⁰	+58 ⁰	12712		542 Tallyrand			1-18-94
	175.5	165.49	10.0	11+71 ⁶					650 Tallyrand			6/4/60

01515 - top 649 Elm St - 6-15-64 - (7+03) Spec for 25" P - Res #49031
 # 11824 - top 610 Rutland - Reynolds Pkwy - 11-9-59 (4+16.8) C 36076 - top 501 Tallyrand - South Thompson - 11-27-72 (4+71.5)
 # 14341 - top 549 Tallyrand - Reynolds Pkwy - 6-23-61 - 11+33.6
 # 14638 - top 526 Rutland - Betty Clark - 9-6-61 (7+59.5)
 # 15021 - top 526 Tallyrand - Reynolds Pkwy - 12-19-61 (10+16.6)
 # 18241 - top 534 Tallyrand - Van Lippert - 12-17-62 - (top in M.H. 6+00)
 # 19296 - top 526 Tallyrand - Reynolds Pkwy - 6-20-63 (top 4+59)
 # 19351 - top 531 Tallyrand - Reynolds Pkwy - 9-2-63 (8+93.5)
 # 19360 - top 732 Elm St - Robert Dunlop - 11-7-63 (2+01.8)
 # 19361 - top 641 Tallyrand - Reynolds Pkwy - 11-7-63 (2+01.8)
 # 19362 - top 641 Tallyrand - Reynolds Pkwy - 11-7-63 (2+01.8)
 # 19363 - top 641 Tallyrand - Reynolds Pkwy - 11-7-63 (2+01.8)
 # 19364 - top 641 Tallyrand - Reynolds Pkwy - 11-7-63 (2+01.8)
 # 19365 - top 641 Tallyrand - Reynolds Pkwy - 11-7-63 (2+01.8)
 # 19366 - top 641 Tallyrand - Reynolds Pkwy - 11-7-63 (2+01.8)
 # 19367 - top 641 Tallyrand - Reynolds Pkwy - 11-7-63 (2+01.8)
 # 19368 - top 641 Tallyrand - Reynolds Pkwy - 11-7-63 (2+01.8)
 # 19369 - top 641 Tallyrand - Reynolds Pkwy - 11-7-63 (2+01.8)
 # 19370 - top 641 Tallyrand - Reynolds Pkwy - 11-7-63 (2+01.8)
 # 19371 - top 641 Tallyrand - Reynolds Pkwy - 11-7-63 (2+01.8)
 # 19372 - top 641 Tallyrand - Reynolds Pkwy - 11-7-63 (2+01.8)
 # 19373 - top 641 Tallyrand - Reynolds Pkwy - 11-7-63 (2+01.8)
 # 19374 - top 641 Tallyrand - Reynolds Pkwy - 11-7-63 (2+01.8)
 # 19375 - top 641 Tallyrand - Reynolds Pkwy - 11-7-63 (2+01.8)
 # 19376 - top 641 Tallyrand - Reynolds Pkwy - 11-7-63 (2+01.8)
 # 19377 - top 641 Tallyrand - Reynolds Pkwy - 11-7-63 (2+01.8)
 # 19378 - top 641 Tallyrand - Reynolds Pkwy - 11-7-63 (2+01.8)
 # 19379 - top 641 Tallyrand - Reynolds Pkwy - 11-7-63 (2+01.8)
 # 19380 - top 641 Tallyrand - Reynolds Pkwy - 11-7-63 (2+01.8)
 # 19381 - top 641 Tallyrand - Reynolds Pkwy - 11-7-63 (2+01.8)
 # 19382 - top 641 Tallyrand - Reynolds Pkwy - 11-7-63 (2+01.8)
 # 19383 - top 641 Tallyrand - Reynolds Pkwy - 11-7-63 (2+01.8)
 # 19384 - top 641 Tallyrand - Reynolds Pkwy - 11-7-63 (2+01.8)
 # 19385 - top 641 Tallyrand - Reynolds Pkwy - 11-7-63 (2+01.8)
 # 19386 - top 641 Tallyrand - Reynolds Pkwy - 11-7-63 (2+01.8)
 # 19387 - top 641 Tallyrand - Reynolds Pkwy - 11-7-63 (2+01.8)
 # 19388 - top 641 Tallyrand - Reynolds Pkwy - 11-7-63 (2+01.8)
 # 19389 - top 641 Tallyrand - Reynolds Pkwy - 11-7-63 (2+01.8)
 # 19390 - top 641 Tallyrand - Reynolds Pkwy - 11-7-63 (2+01.8)
 # 19391 - top 641 Tallyrand - Reynolds Pkwy - 11-7-63 (2+01.8)
 # 19392 - top 641 Tallyrand - Reynolds Pkwy - 11-7-63 (2+01.8)
 # 19393 - top 641 Tallyrand - Reynolds Pkwy - 11-7-63 (2+01.8)
 # 19394 - top 641 Tallyrand - Reynolds Pkwy - 11-7-63 (2+01.8)
 # 19395 - top 641 Tallyrand - Reynolds Pkwy - 11-7-63 (2+01.8)
 # 19396 - top 641 Tallyrand - Reynolds Pkwy - 11-7-63 (2+01.8)
 # 19397 - top 641 Tallyrand - Reynolds Pkwy - 11-7-63 (2+01.8)
 # 19398 - top 641 Tallyrand - Reynolds Pkwy - 11-7-63 (2+01.8)
 # 19399 - top 641 Tallyrand - Reynolds Pkwy - 11-7-63 (2+01.8)
 # 19400 - top 641 Tallyrand - Reynolds Pkwy - 11-7-63 (2+01.8)