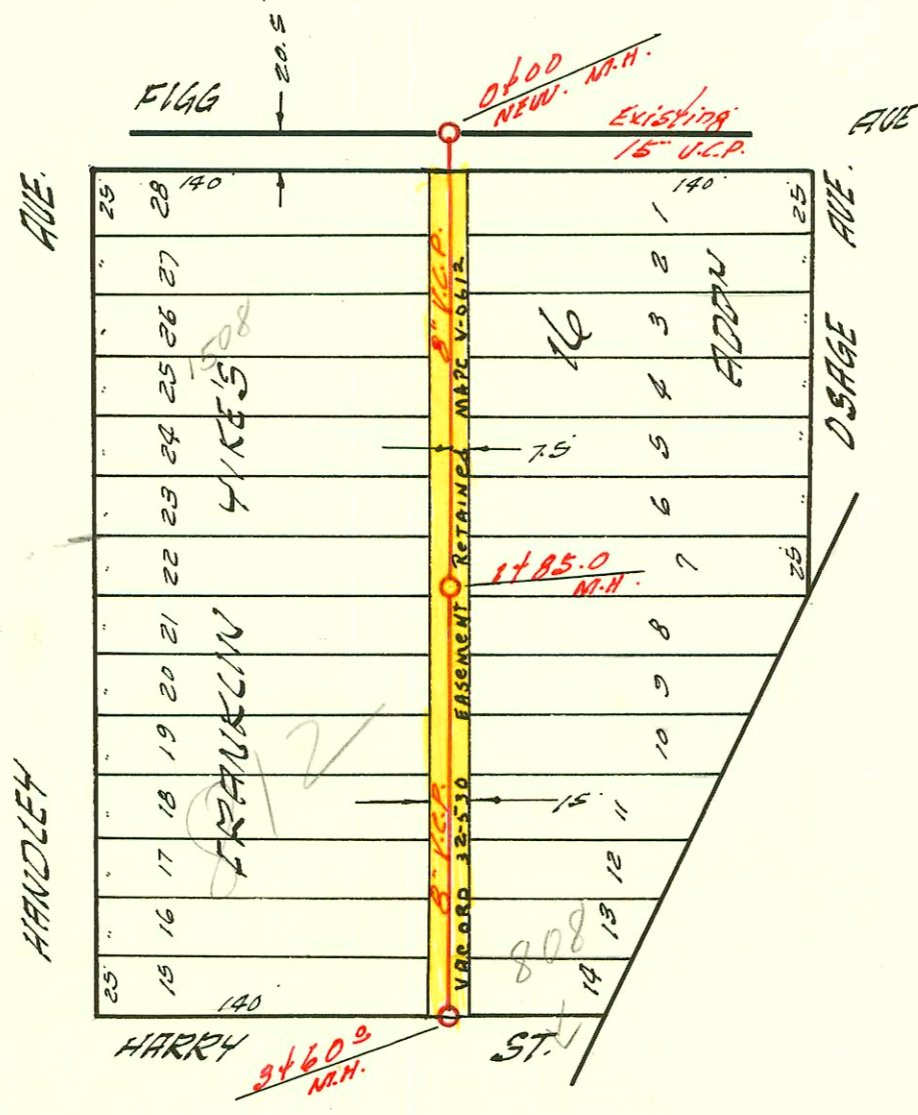
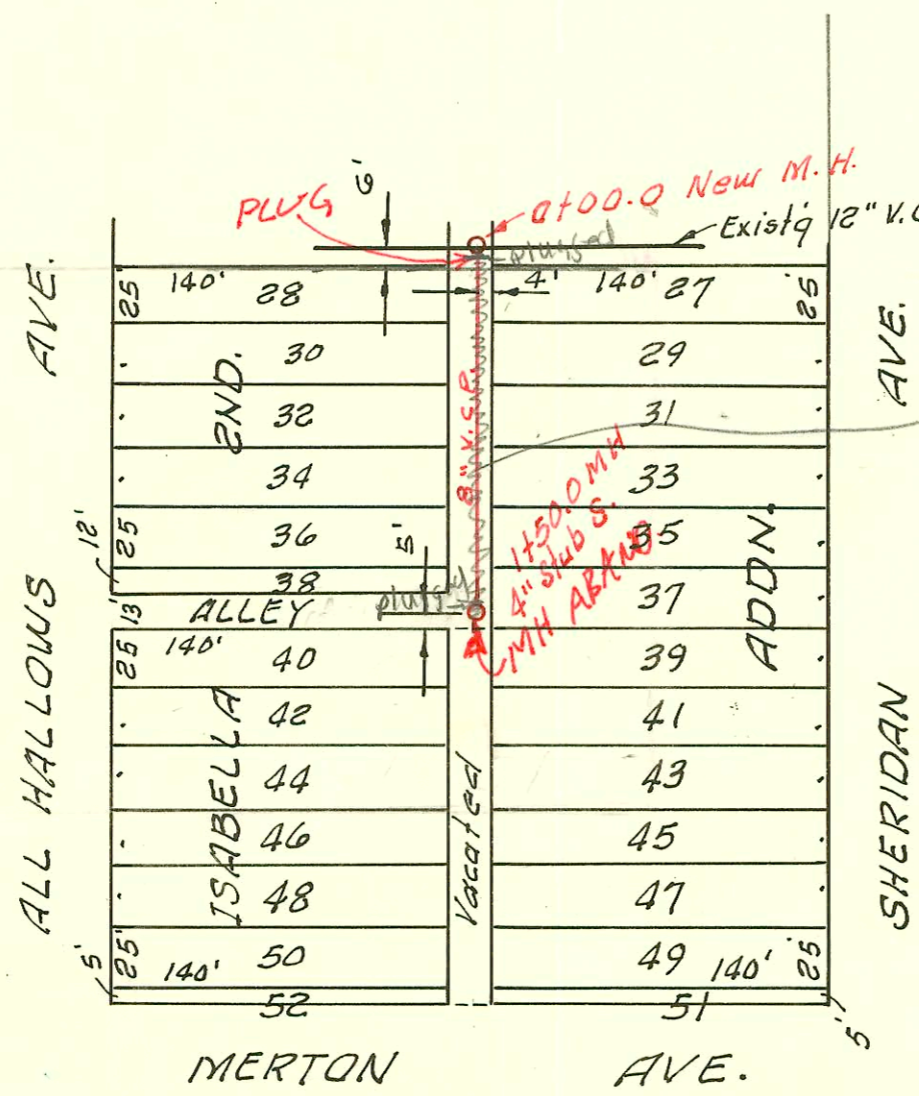


C-70



LAT. 7 DIST. E. S.S. 21
 W. B. CARTER CONST. CO. OCT. 19-59
 BK. NO. K-64A PROJ. # C 29-84



Line abandoned from MH 1750 to
 MH 0+00. MH 1750 abandoned and pipe
 plugged both ends. Certified by
 Savoy, Bagges & Bohm Engineers
 7/13/98

1" = 80'

LAT. 78, SAN. SEWER NO. 22
 W. B. CARTER CONST. CO. INC., 3-9-66
 PROJ. NO. C 20-11, BK. NO. K-83

CONSTRUCTION RECORD						SERVICE RECORD						
STATION	ELEVATION		Depth	MANHOLE	4-INCH "Y" BRANCHES		No. of Permit		House Number		DATE OF PERMITS	
	Ground	Grade			North West	South East	North West	South East	North West	South East	North West	South East
0+00	102.1	97.88	7.2	New M.H.								
1+00	102.8	95.28	7.5		+30° +55° +97° +04°		S. C35212 12060		1508 S. Handley		10-4-72 12-14-59	
	102.8	95.62	7.1	1+85°	+50°							
2+00	102.6	95.68	6.9		+92°							
3+00	102.0	96.08	5.9	tap	+38° +81° 3+45-6 +27°		C32186		812 W Wamy		5-12-72	
	101.9	96.32	5.6	3+60°								
0+00	109.7	101.30	8.4	New M.H. 0+00	0+16° 0+79°	0+14° 0+77°						
1+00	109.8	101.70	8.1			6" 1+11°						
	108.8	101.90	6.9	1+50°	1+18° 4" St 46 S. Tap into M.H.		293-61577 5247 C641		1451 S. 30 Sheridan 1651 S. Sheridan		3-25-63 3-16-66 10-31-66	

LAT. 78. S. S. NO. 22

U-70