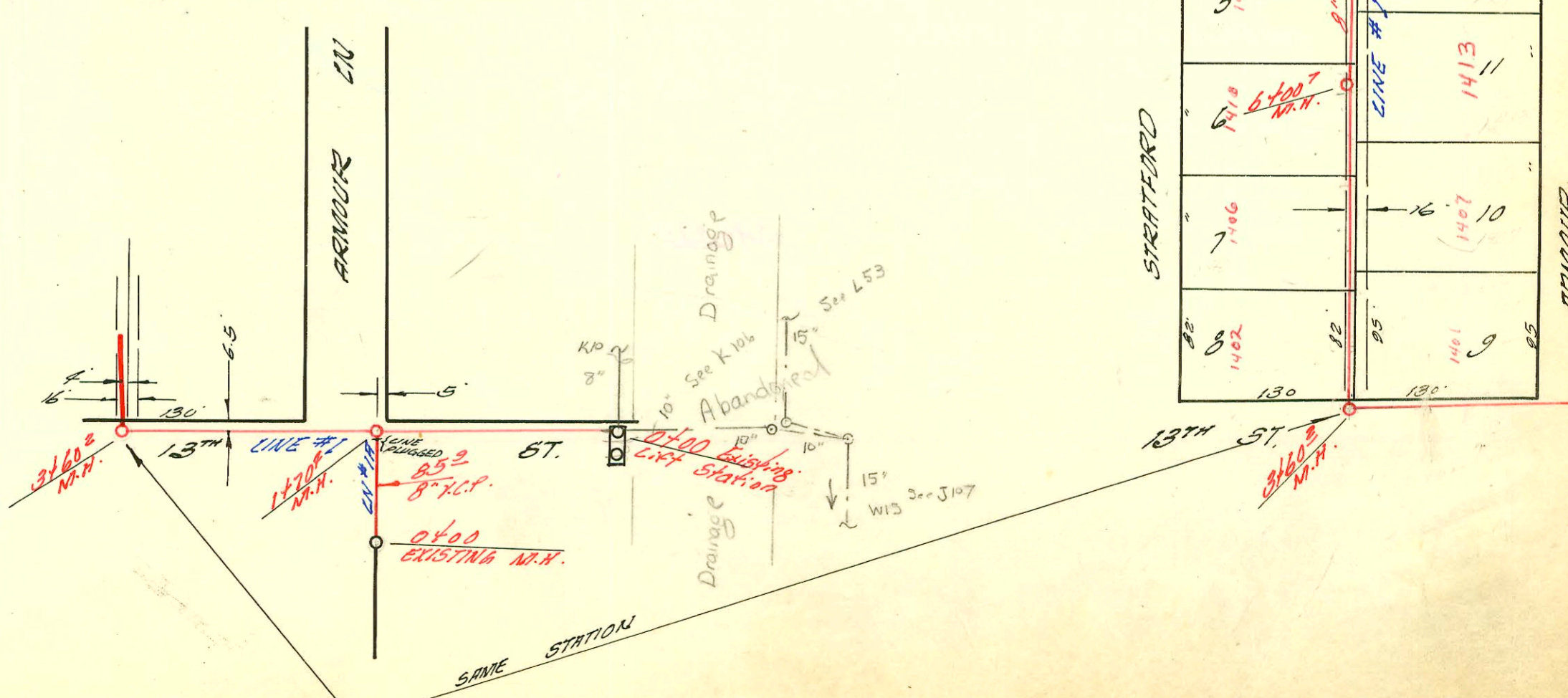


LATERAL TO D.C.S. #2 S.S. #12
 MID-STATES CONSTR. CO. INC. AUG. 12 '59
 BK. NO. K-64 PROD. NO. 29-32
 SW 1/4 Sec 7 TWP 27S R2E
 P.B. 12-40



CONSTRUCTION RECORD

SERVICE RECORD

STATION	ELEVATION		Depth	MANHOLE	4-INCH "Y" BRANCHES		No. of Permit		House Number		DATE OF PERMITS	
	Ground	Grade			North West	South East	North West	South East	North West	South East	North West	South East
LINE #1 0+00	185.1	179.10	6.0	Existing MH.								
1 1+00	186.4	179.50	6.9									
2 1+88.0	188.0	179.78	8.2	1470 ⁴								
3 2+00	188.8	179.90	8.9									
4 3+00	190.7	180.30	10.4									
5 191.6	191.6	180.54	11.1									
6 191.6	191.6	180.83	11.0	3460 ²								
7 4+00	192.0	180.80	11.2									
8 4+01 ⁰												
9 4+74 ⁵												
10 4+88 ⁹							14558	15703	140 ⁰ Stratford	1407 Arrow	5-11-61	6-1-62
11 5+00	191.4	181.20	10.2									
12 4+58 ⁹							15234		141 ⁰ Stratford	1413 Arrow	3-1-62	
13 4+82 ⁸								16270				10-19-62
14 6+00												
15 191.2	191.2	181.60	9.6	6400 ⁷								
16 4+37 ⁵							14824		1414 Stratford	1417 Arrow	10-6-61	
17 4+79 ⁵								16106				9-6-62
18 7+00	191.4	182.00	9.4									
19 4+20 ⁵							14509		1418 Stratford		8-1-61	
20 4+71 ⁰												
21 8+00	190.9	182.40	8.5									
22 190.9	190.9	182.44	8.5	8409 ²								
23 4+31 ⁰												
24 9+00	189.2	182.90	6.3					228130		1421 N Arrow		11-10-71
25 4+04 ⁵												
26 189.1	189.1	182.94	6.2	9411 ⁰								
27 189.1	189.1	182.94	6.2									
28 LINE #2 0+00	190.8	182.40	8.4	Existing MH.								
29 4+36 ³								16044		1422 Stratford		8-17-62
30 1+00	191.5	182.84	8.7									
31 192.0	192.0	183.19	8.8	1488 ⁰								
32 2+00	192.0	183.24	8.8									
33 4+57 ⁰								14388		1425 Stratford		6-30-61
34 3+00	192.7	183.64	9.1									
35 193.5	193.5	183.72	9.8									
36 193.5	193.5	183.82	9.7	3420 ⁵	Y. North	Y. South	12470	81006	670 ¹ Stratford	1425 Stratford	4-6-60	3-9-64
37 4+00	192.6	184.14	8.5									
38 4+20 ⁵							12332	14907	670 ⁷⁸ Stratford	1429 Stratford	2-18-60	11-6-61
39 5+00	191.9	184.54	7.4									
40 4+38 ⁰							13727	15221	671 ³⁵ Stratford	1437 Stratford	1-3-61	9-11-85
41 4+24 ⁰												2-20-62
42 6+00												
43 191.5	191.5	184.95	6.5	6401 ⁵								
44 LINE #2A 0+00	193.0	184.42		Existing MH.								
45 4+33 ⁴												
46 1+00	195.2	185.90	9.3									
47 4+23 ⁰								11835		6601 Stratford		11-10-59
48 195.7	195.7	187.19	8.5	1494 ⁰								
49 2+00												
50 4+27 ⁵												
51 3+00	198.3	188.70	9.6									
52 199.4	199.4	188.83	10.6	3409 ⁶	8" stub S.W.							
53 LINE #3 0+00	190.7	185.03	5.7	Existing MH.								
54 1+00	191.7	185.45	6.2									
55 192.1	192.1	185.65	6.4	1492 ²								
56 2+00	192.2	185.85	6.3									
57 3+00	192.1	186.25	5.8									
58 193.1	193.1	186.42	6.7	3442 ⁰								
59 3+75 ⁰												
60 3+73 ⁰												
61 4+00	193.9	186.75	7.1									
62 4+55 ⁰							11308	14763	6609 Stratford	670 ²⁵ Stratford	8-20-59	10-25-61
63 5+00	195.2	187.15	8.0									
64 4+36 ⁰												
65 196.5	196.5	187.55	8.9	5497 ⁰								
66 6+00												
67 6+23 ²							15165	14882	6601 Stratford	66145 Stratford	2-7-62	10-25-61
68 6+23 ⁵								16662		6610 Stratford		2-15-63
69 7+00	198.0	187.95	10.0									
70 7+23 ⁵							12006		6519 Stratford		4-5-60	

12015 Tap 6513 Stratford Advance Hwy 12-3-59 (7+71.4) 98-161807 8/26/68 1401 N ARMOUR-

14893 Tap - 1412 Stratford - Justice Hwy - 7-11-61 (4+13.2)

14905 Tap - 1430 Stratford - Van Arman - 11-8-61 (8+38.0)

14751 Tap - 613 E. 14th - Van Arman - 11-14-61 (0+08-25.2A)

15006 Tap - 6614 Stratford - Shipp Hwy 12-4-61 (2+58.2 - 2nd 1)

15408 Tap - 6714 - 14th - Kennedy 4-3-62 (2+58.0 - 2nd 3)

15416 Tap - 6511 - 8th - Van Arman - 5-21-62 (2+93.6)

15446 Tap - 1426 Stratford - Van Arman - 9-30-62 (8+67.2)

16621 Tap - 1401 - Van Arman - 2-15-63 (4+03.2) (4+10.9) see above