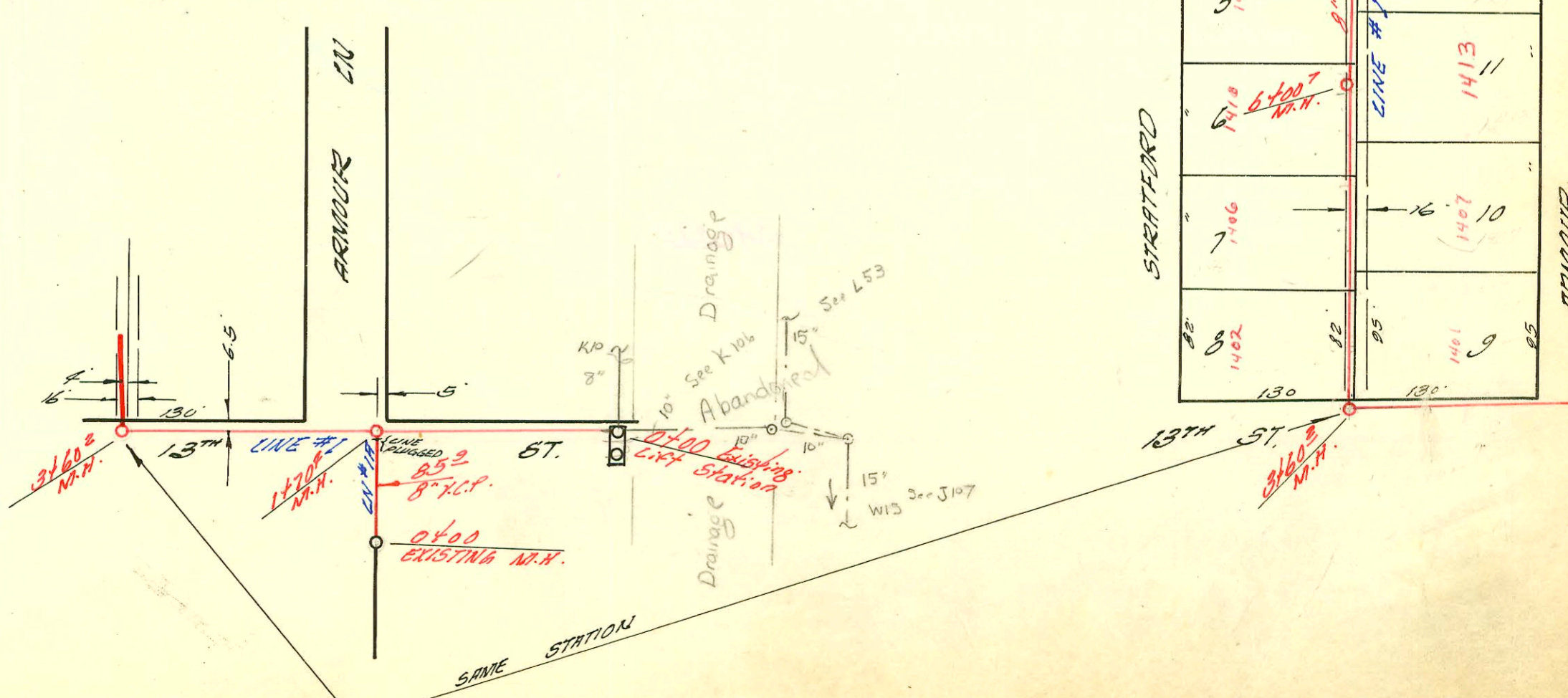


LATERAL TO D.C.S. #2 S.S. #12
 MID-STATES CONSTR. CO. INC. AUG. 12 '59
 BK. NO. K-64 PROD. NO. 29-32
 SW 1/4 Sec 7 TWP 27S R2E
 P.B. 12-40



CONSTRUCTION RECORD

SERVICE RECORD

STATION	ELEVATION		Depth	MANHOLE	4-INCH "Y" BRANCHES		No. of Permit		House Number		DATE OF PERMITS		
	Ground	Grade			North West	South East	North West	South East	North West	South East	North West	South East	
71					+84°	+716		13876		6606E 14th		2-16-61	
72	8400	199.4	188.35	11.0									
73		199.6	188.93	11.2									
74			189.20	10.9	8419E								
75	9400	200.8	190.73	10.1				11307	13368	6509 abbotsford	6602 E. 14th	8-20-59 10-4-60	
76					+90°	+154	14222	13862	6505 abbotsford	6510E 14th		5-26-61 2-14-61	
77						+88°		13263			6506 14th	8-26-60	
78	10400	203.0	192.63	10.4									
79					+315	10463°	#14382	B2564	6501 abbotsford	6422 E 14th		6-28-61 12-28-64	
80	11400	203.8	194.53	9.3									
81		204.0	194.76	9.2	11412L								
82					+25°	+40°	#16708	14031	6413 abbotsford	6414E 14th		2-26-63 4-3-61	
83	12400	205.6	196.93	9.2									
84					+035	+123	13825	12089	6409 abbotsford	6410 E. 14th		2-1-61 12-31-59	
85					+87°	+85°	14221	12088	6405 abbotsford	6406 E. 14th		5-26-61 R-31-59	
86	13400	207.1	198.33	8.8									
87					+59°	+57°	#15660	12087	6401 abbotsford	6402 E. 14th		5-22-62 12-31-59	
88		208.2	199.85	8.3	13479°								
89													
LINE #2	0400	193.4	186.42	7.0	Existing M.H.								
90	1400	193.7	186.82	6.9									
91	2400	194.8	187.22	7.6									
92	3400	194.8	187.62	7.2									
93		195.0	187.67	7.3									
94			187.79	7.2	3411E								
95	4400	196.7	188.12	8.6									
96					+26°	+125	B1403	17224	6513E 15th	6610 abbotsford		3-31-64 6-7-63	
97						+84°		B1370		6606 abbotsford		6-8-64	
98	5400	198.1	188.52	9.6									
99					+15°	+555	#16759	15284	6509 E. 15th	6602 abbotsford		3-12-63 3-12-62	
	6400	199.2	188.22	10.3									
		199.6	188.92	10.7									
			191.00	8.6	6408°								
					+166	+28°		16281		6514 abbotsford		10-23-62	
					+98°	+96°	#2327	14314	6501 E. 15th	6516 abbotsford		11-12-63 6-20-61	
	7400	201.3	192.52	8.8									
					+84°	+63°	#8695	14413	6417E 15th	6506 abbotsford		1-20-64 7-6-61	
	8400	203.1	194.12	9.0									
					+72°	+28°	#16238	12857	6413 E. 15th	6509 abbotsford		4-10-63 5-31-60	
	9400	204.4	195.40	9.0	84825								
		204.7	195.72	9.0									
						+64°	+73°	#16807	13173	6409 E. 15th	6419 abbotsford		3-19-68 8-18-60
	10400	206.4	197.32	9.1									
					10450°	+48°	#16469	14412	6405E E. 15th	6406 abbotsford	6-89 4-1-92	12-11-62 7-6-61	
	11400	207.6	198.92	8.7									
					+294	+274	17897	B1369	6401 E. 15th	6402 abbotsford		5-10-63 6-8-64	
		208.0	199.72	8.3	11455°								
LINE #5	0400	194.8	187.76	7.1	Existing M.H.								
	1400	195.2	188.76	6.5									
	2400	195.7	188.56	7.1									
	3400	197.8	188.96	8.8									
		198.1	189.07	9.0									
			189.15	8.9	34293	+34829							
						+572	+552	#47722	16470	6513 abbotsford		12-10-74 12-3-74 10-23-59	
	4400	197.5	189.46	8.0									
						+42°	+32°	#15963	#81671	6509 abbotsford	6505 15th	7-31-62 7-20-64	
	5400	199.4	189.86	9.5									
						+41°	+08°	12624	#16960	6505 abbotsford	6506 E. 15th	4-8-60 4-15-63	
		200.9	190.07	10.8									
			191.75	10.1	5455°				#17435	6502 E. 15th		7-24-63	
	6400	200.9	191.75	9.1									
						+52°	+413	13223		6501 abbotsford		8-3-60	
	7400	202.8	193.35	9.4									
						+485	+105		B2069	6414E 15th		10-2-64	
		203.8	194.23	9.5	74565				#13726	6410E 15th		1-23-64	
	8400	205.4	194.25	10.4									
						+31°	+475	#14736	16468	6405 abbotsford	6406 E. 15th	7-26-61 12-11-62	
	9400	205.8	196.55	9.2									
						+255	+235	16280	#16913	6401 abbotsford	6402 E. 15th	10-23-62 4-3-63	
		207.1	197.35	9.7	94515								

14874 - top - 6419 abbotsford - 12-6-61 - Port Building City
 #15569 - 6613 abbotsford - 3-28-62 - Kern Spaldet - top 0464 - line 4
 #16824 - top - 6505 E. 15th - 4-1-63 - Port Building City (6405)
 #17500 - top - 6418 E. 15th - 8-22-63 - Kern Spaldet (6427)

