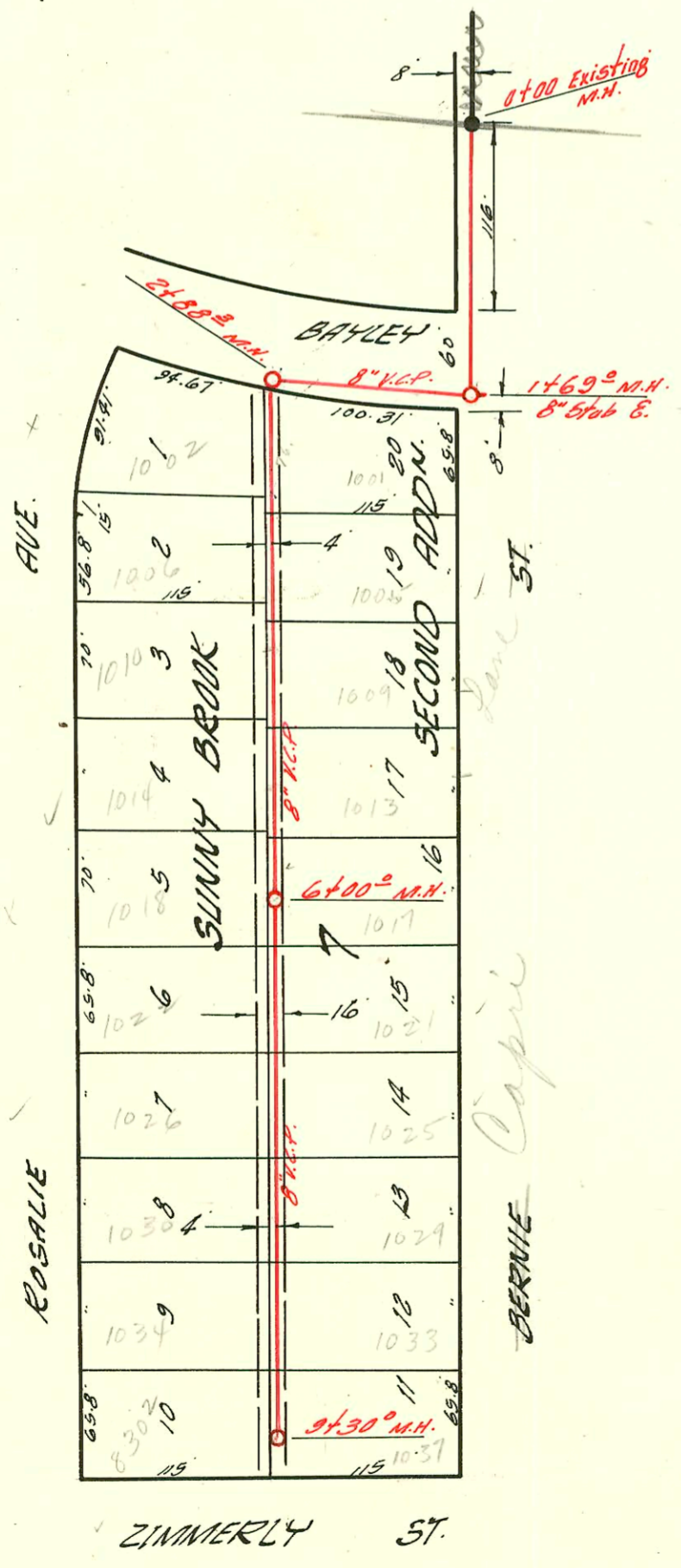


LAT. 65 D.C.S. #2 SAN. SEWER 12
 W.B. CARTER CONSTR. CO. AUG. 17 '59
 BK. NO. K-55 PROJECT NO. C27-81



LATERAL 7 SUB. B W.I.S.
 MID-STATES CONSTR. CO. AUG 21 '59
 BK. NO. K-59 PROJ. NO. C27-104

Opie

CONSTRUCTION RECORD

SERVICE RECORD

STATION	ELEVATION		Depth	MANHOLE	4-INCH "Y" BRANCHES		No. of Permit		House Number		DATE OF PERMITS	
	Ground	Grade			North West	South East	North West	South East	North West	South East	North West	South East
0400	219.9	210.84	8.6	Existing M.H.								
1400	219.5	211.24	8.3									
2400	219.2	211.64	7.6									
3400	219.3	212.04	7.2		+20 ²	+22 ²	11305		5701 Shadowline		8-19-59	
	219.3	212.16	7.1	2429 ³		2+40 ⁵		C10456	5702 Rockhill			9-11-68
4400	219.3	212.44	6.9		+40 ²	+42 ²	15705	C10457	5707 Shadowline	5706 E Rockhill	6-4-62	9-11-68
5400	219.1	212.84	6.3		+34 ³	+36 ³		C15168	5710 Rockhill			7-30-69
6400	219.4	213.24	6.2		5+34 ³	+56 ³	15710	B5612	5717 Shadowline	5802 Rockhill	6-5-62	5-12-66
7400	219.6	213.52	6.1	6469 ⁰	4' 0" 64 ¹	6+85 ²	6982	11306	5721 Shadowline		11-15-62	
	219.4	213.64	5.8			6+94 ⁰		B4797	5806 Rockhill		8-19-59	12-21-65
	212.7	213.98	5.8	7485 ⁴	+12 ⁵	+14 ⁵		C6042	5812 Rockhill			12-7-67
					7+53 ²			C8464	1909 Charlotte			5-27-68
LAT. 7 SUB. 8 U.I.S.												
0400	151.4	143.78	7.6	Existing M.H.	4 WEST	4 EAST						
1400	151.8	144.34	7.5									
	153.2	144.75	8.4									
2400	152.6	145.03	7.6		1469 ⁰	8" 546 E.						
	153.9	145.56	8.3									
3400	154.3	145.75	8.5		2488 ³							
4400	158.0	146.35	11.4									
5400	156.4	147.35	9.0									
6400	156.5	148.15	8.3	6400 ⁰								
	158.0	150.90	7.1									
8400	159.3	153.10	6.2									
9400	160.3	159.30	5.0									
	160.8	155.96	4.9	9430 ⁰								

15906 - 5713 Shadowline - J. Frank & Ruby Co - 6-5-62 - top (4+74.3)