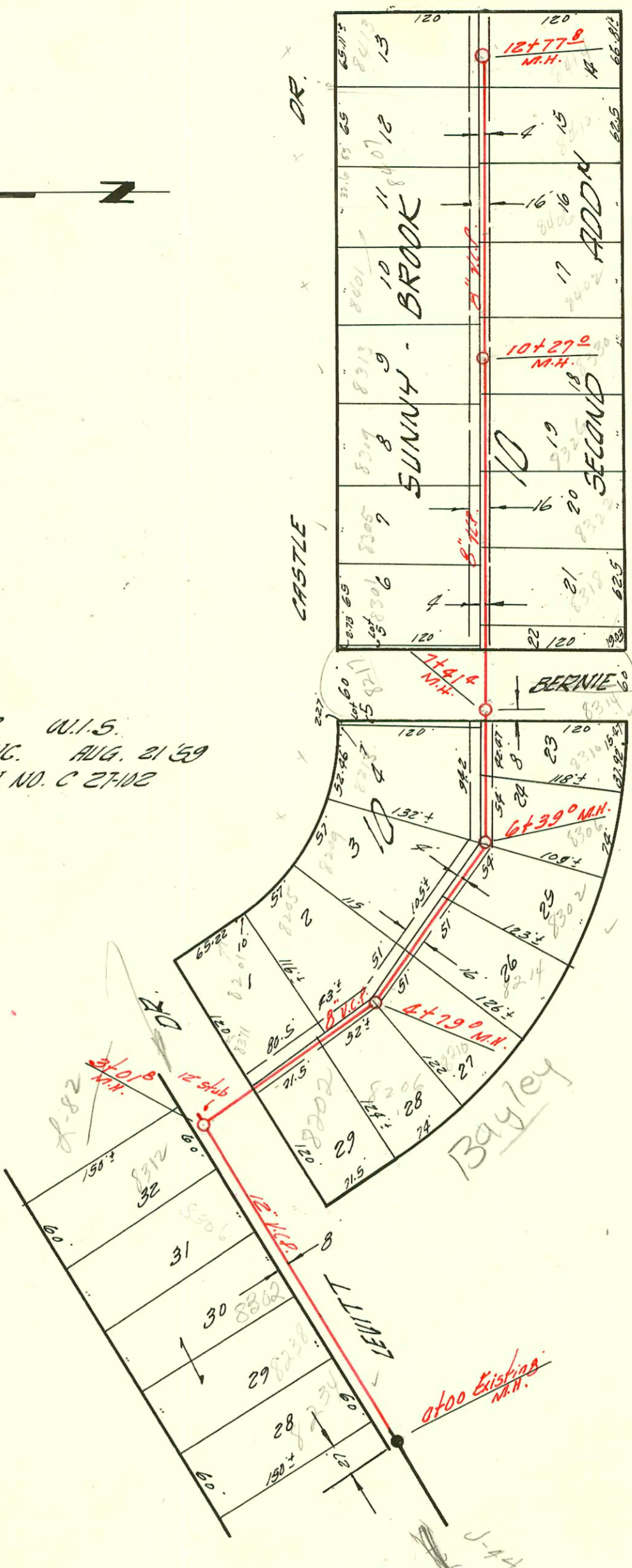


DALTON DR.



LATERAL S SUB. B U.I.S.
MID-STATES CONSTR. CO. INC. AUG. 21 59
BK. NO. K-59 PROJ. NO. C 27-02



ST.

BAYLEY

VACATED 9/1/62 rd 26-169

Bayley

0+00 Existing N.H.

J-44

CONSTRUCTION RECORD

SERVICE RECORD

STATION	ELEVATION		Depth	MANHOLE	4-INCH "Y" BRANCHES		No. of Permit		House Number		DATE OF PERMITS	
	Ground	Grade			North West	South East	North West	South East	North West	South East	North West	South East
0+00	149.0	140.33	8.7	Existing M.H.								
1+00	153.4	140.73	12.7		+39.9							
2+00	152.5	141.13	11.4		+217		15210		8238		2-16-62	
3+00	149.9	141.87	8.0	3+01 ^B	+617				8306		4-13-66	
4+00	150.5	142.26	8.2		2+13 ⁸		85438		8202		9-26-66	
5+00	150.9	142.58	8.3	4+79 ⁰	+22 ⁰				8201		7-28-66	
6+00	151.5	143.06	8.4		+815				8205		11-27-61	6-21-67
7+00	151.4	143.21	8.2	6+39 ⁰	12" stub E.				8208		7-12-60	
8+00	152.6	144.09	8.5	7+41 ⁹	2+88 ⁰ (NW) +86 ⁰ (NE)		11959		8209	8214 E.	7-12-67	11-13-61
9+00	154.9	144.89	10.0		4+30 ¹		B6080		8302		1-10-62	
10+00	157.7	145.69	12.0		4+58 ⁵ (NW) +64 ⁵ (NE)		14972		8305	8318 E.	9-26-66	11-8-65
11+00	160.9	151.46	9.4		5+48 ⁰		#12901		8325		11-29-65	
12+00	166.6	156.50	10.1	12+77 ⁸	+46 ⁰		C3892	14935	8401	8422	9-2-66	5-27-68
					+99 ⁰			15096	8406 E.		3-25-68	
					+51 ⁰		C3893	B1522	8213	8306 E.	7-12-67	6-10-64
					+49 ⁰				8307		12-8-66	
					+02 ⁰				8310 E.		6-16-64	
					+07 ⁸				8217			
					+66 ⁵				8301			
					+058				8305	8318 E.	4-24-61	
					8+43.1		B6385	B4477	8305	8318 E.	10-25-66	
					+854				8325		9-26-66	11-8-65
					8+98 ⁰				8325		11-29-65	
					+36 ⁰				8309	8326 E.	10-25-66	12-1-65
					9+56 ⁶		C563	C4690	8313	8330	9-26-66	
					+31 ⁰				8401	8422	9-2-66	5-27-68
					+05 ³		B6386		8406 E.		3-25-68	
					10+115 ⁴				8407	8410 E.	6-16-66	10-3-67
					+66 ⁰				8407	8410 E.	6-16-66	10-3-67
					10+96 ⁷		B6287	C8460	8407	8410 E.	6-16-66	10-3-67
					+77 ⁰				8407	8410 E.	6-16-66	10-3-67
					+28 ⁵				8407	8410 E.	6-16-66	10-3-67
					+43 ⁰				8407	8410 E.	6-16-66	10-3-67
					+03 ⁰		B5838	C5099	8407	8410 E.	6-16-66	10-3-67
					+65 ⁵				8407	8410 E.	6-16-66	10-3-67
					+67 ⁵				8407	8410 E.	6-16-66	10-3-67
					12+70 ⁸		B5444		8407	8410 E.	6-16-66	10-3-67

C 5743-8312 Leitch Dr - at Henning - 11-14-67 top (2+68.2)
 12771 Top 8302 Leitch Henley 5-17-60 (4+88.8)
 15670 Top - 8234 Leitch - Van Apperel 5-29-62 (6+47)
 B1605 Top - 8314 E. Bayley - at Henning 7-2-64 (7+79)