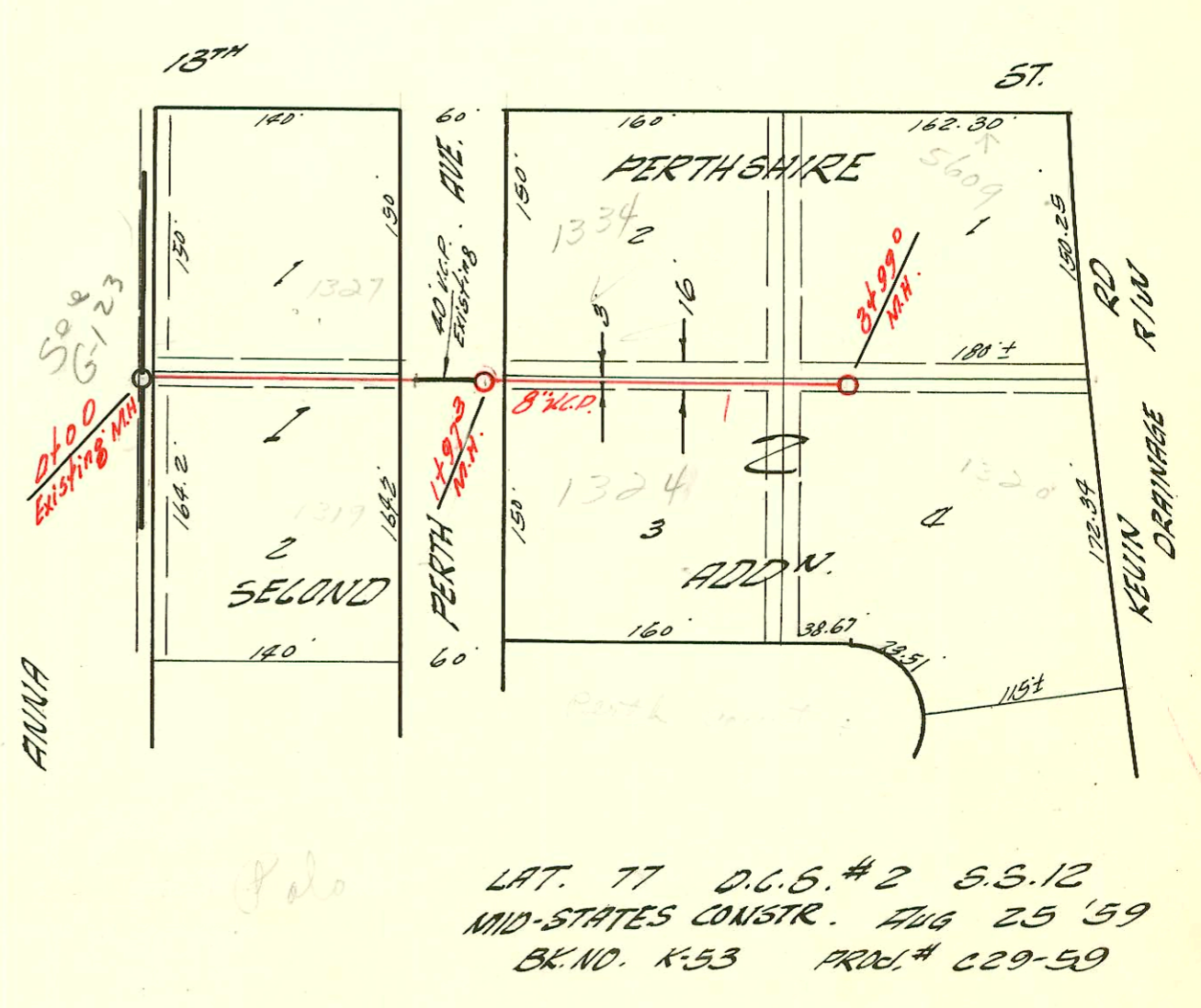


LAT. 96 SUB. 5 S.S. 22
 UTILITY CONTRACTORS AUG. 25 '59
 BK. NO. K-61 PROD. NO. C29-2



LAT. 77 D.C.G. #2 S.S. 12
 MID-STATES CONSTR. AUG 25 '59
 BK. NO. K-53 PROD. # C29-59

CONSTRUCTION RECORD

SERVICE RECORD

LAT. 96, SUB 5
LINE #1

STATION	ELEVATION		Depth	MANHOLE	4-INCH "Y" BRANCHES		No. of Permit		House Number		DATE OF PERMITS	
	Ground	Grade			North West	South East	North West	South East	North West	South East	North West	South East
0+00	121.8	113.90	7.9	Existing MH.								
1+00	120.9	114.10	6.8		+87°	+65°						
	121.3	114.23	7.1									
		114.23	7.0	1+67°								
2+00	120.8	114.30	6.5		+87°	+60°	7984	3146	416	419	4-29-83	4-16-81
3+00	121.4	114.50	6.9		+66°	+16°	11397	B1042	440 N. Bebe	423 N. Anna	4-9-69	1-15-85
4+00	121.1	114.70	6.4		+67°	+96°						
	121.6	114.80	6.8	4+422								
5+00	121.3	114.90	6.4		+58°	+91°	11629	11257	446 N. Bebe	425 N. Anna	7-30-79	8-25-59
6+00	121.1	115.10	6.0		+52°	+74°	11645	14040	454 N. Bebe	453 N. Anna	3-6-63	10-19-59
7+00	120.9	115.31	5.6		+22°	+64°						
	122.2	115.40	6.8	7+494								
8+00	121.2	115.50	5.7		+72°	+67°	11347	11628	500 N. Bebe	505 N. Anna	8-28-59	10-14-59
9+00	120.3	115.70	4.6		+41°	+27°	11415	11629	512 N. Bebe	511 N. Anna	7-11-59	10-14-59
10+00	120.5	115.90	4.6		+05°	+07°	13548	12665	517 N. Bebe	521 N. Anna	11-9-60	1-31-65
	120.9	116.00	4.9	10+498								
11+00	121.3	116.10	5.2		+99°	+64°	81898	12258	530 N. Bebe	535 N. Anna	9-2-64	2-8-60
12+00	121.9	116.30	5.6		+90°	+88°						
13+00	121.9	116.50	5.4		+31°	+62°	119677	81897	4825 Newell	555 N. Anna	6-12-70	9-2-64
14+00	121.6	116.80	4.8									
	122.0	116.96	5.0	14+79°								
LAT. 77	120.3	114.33	6.0	Existing MH.	+86°	+92°	26296	12648				
1+00	121.1	114.53	6.6									
2+00	121.3	114.63	5.7	14+85°								
3+00	208.9	200.23	8.7	Existing MH.	+51°	+49°						
4+00	206.0	200.43	5.6									
5+00	204.0	200.83	3.2									
	203.4	201.03	2.4	3+99°								

#11456 - top - 1384 Bebe - R. K. Kay 9-25-59 (beam above front, in using 2 annos) 2+48.5
 #13317 - top - 1327 Bebe - A. L. Henning 9-12-60 @+30
 #14715 - top - 1321 Bebe - Phipps 9-22-61 top into MH. 3+99.0
 #B3322 - top - 4607 Bebe - Keith Zeller 5-4-65 - Top (5+95.4)
 #B3617 - top - 4825 St. Louis - Keith Zeller 6-30-65 - Top (6+16.4)
 #B4851 - top - 4810 St. Louis - Evelyn P. 12-30-65 (top 9+15)
 #C22976 - Top - 4806 St. Louis - Ernest Gorchon (8+72.0)