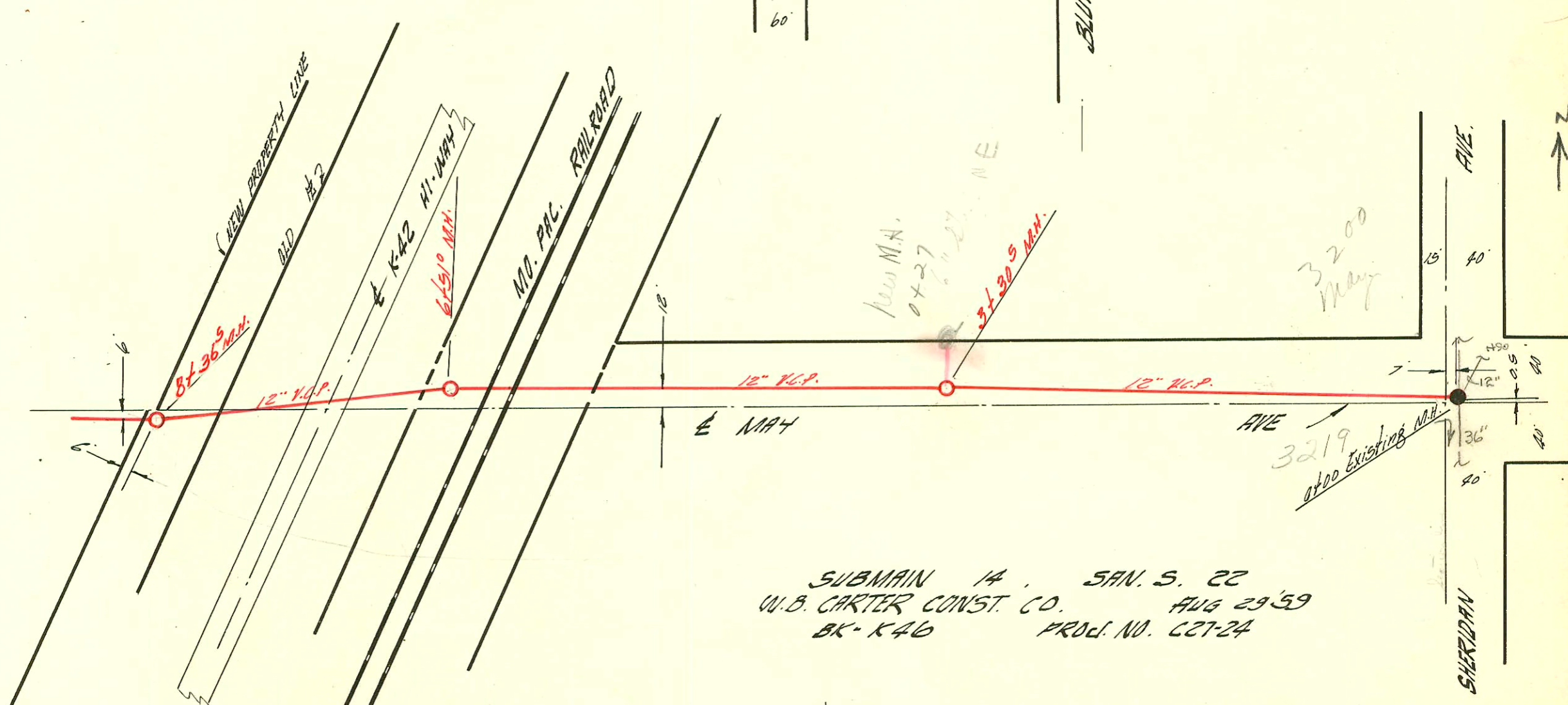
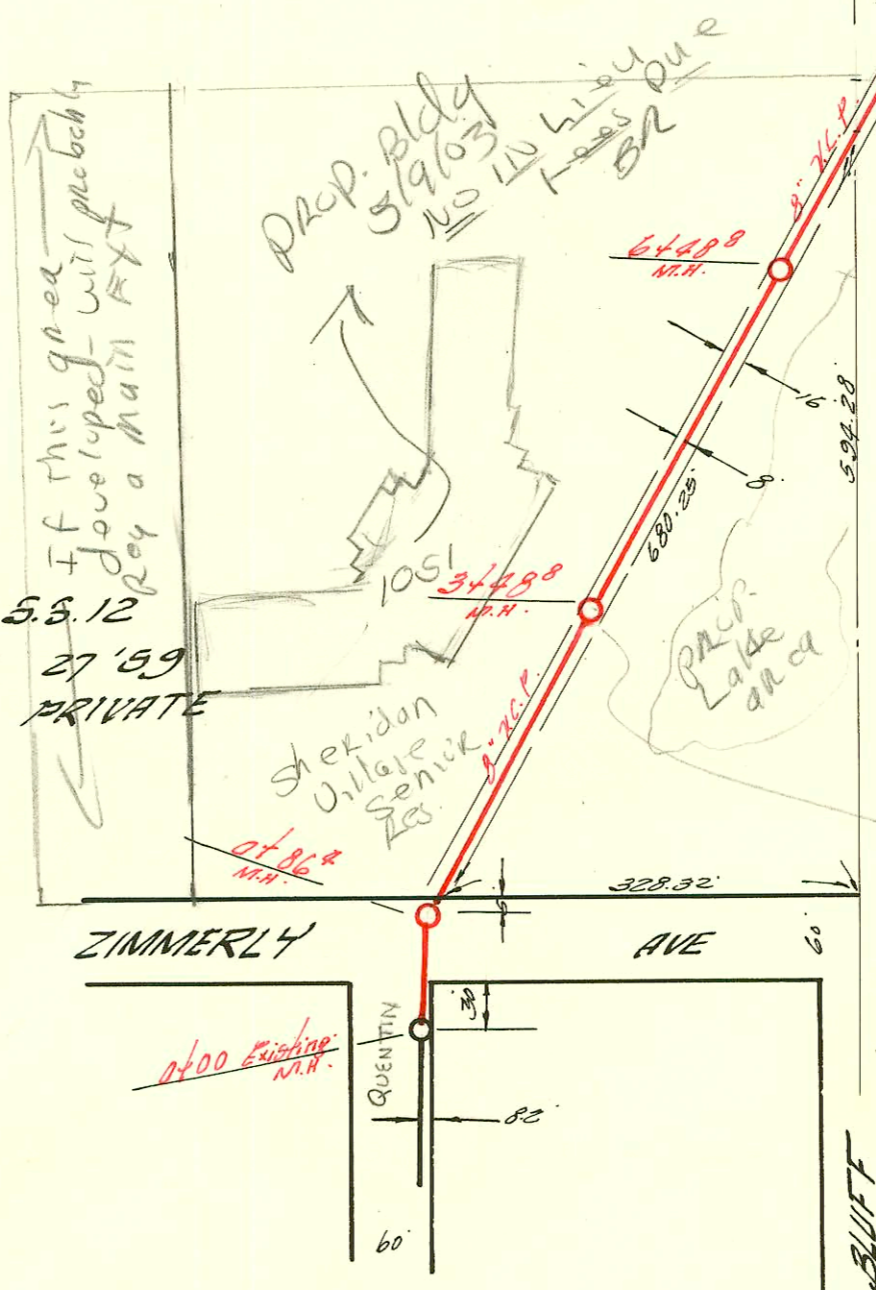
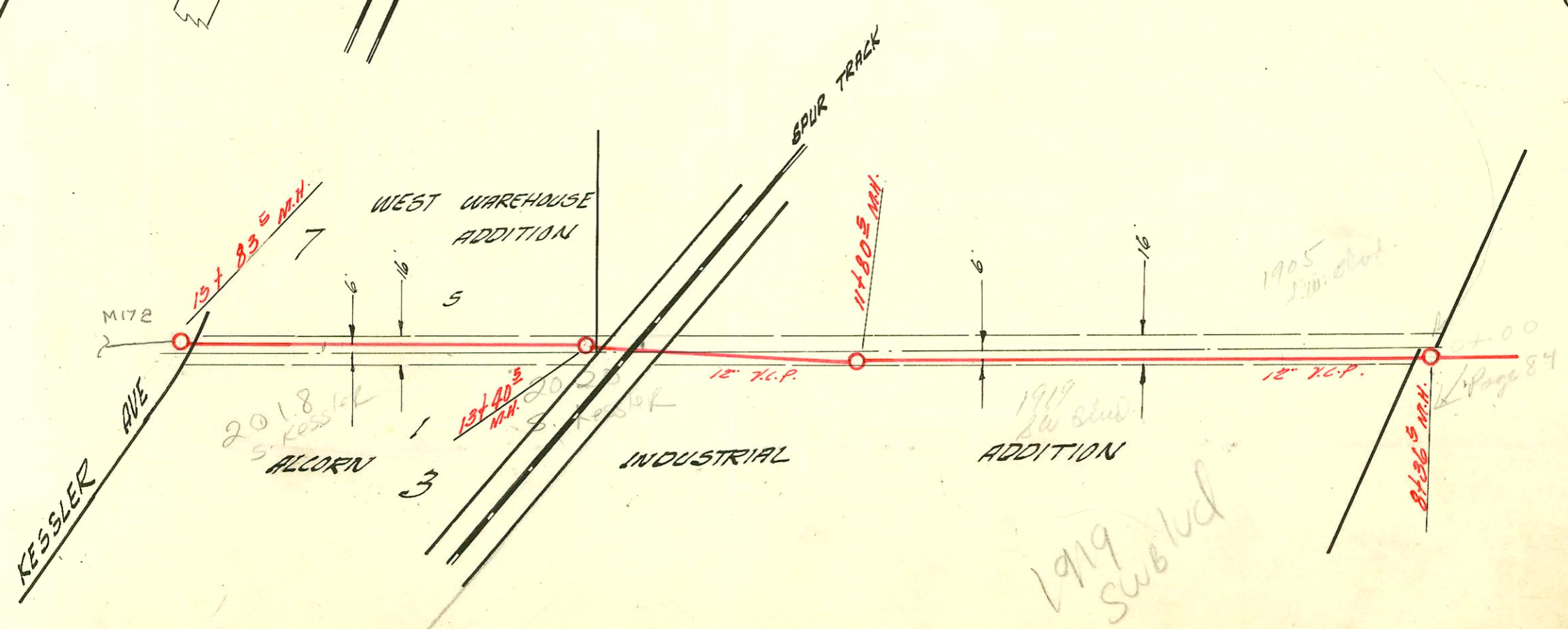


EXT. LAT. 30 D.C.S. #2 5.5.12
MILD-STATES CONSTR CO., INC. 27 '59
BK. NO. K-47 PROJ. # PRIVATE



SUBMAIN 14 SAN. S. 22
U.B. CARTER CONST. CO. AUG 29 '59
BK. K46 PROJ. NO. C27-24



1919 sub

