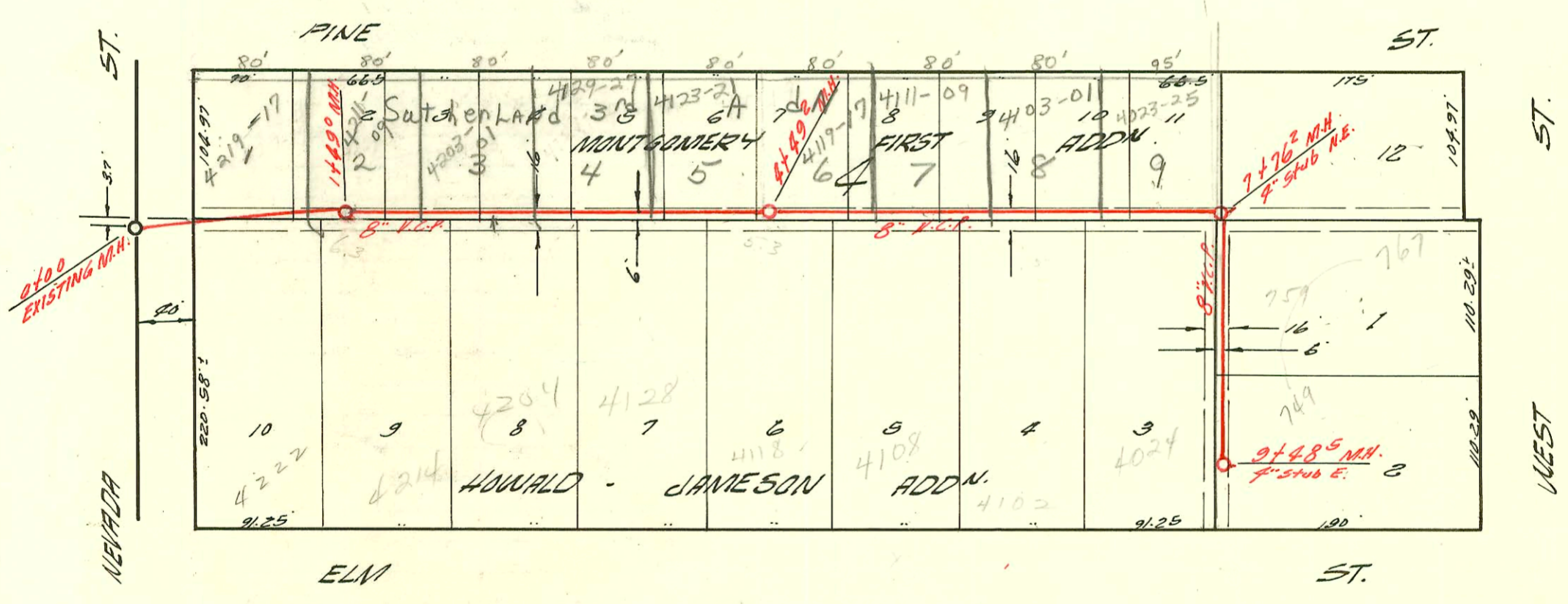


LATERAL 27 SUB. 3 S.S. 22
 W. B. CARTER CONST. AUG. 29 '59
 BK. NO. K-57 PROJ. # C28-84



LATERAL 99 SUB. 5 S.S. 22
 UTILITY CONTRACTORS AUG. 29 '59
 BK. NO. K-50 PROJ. # C29-6

SWP2006-00945 - 4/12/06 - 4204 W Elm - repair 105' E g.m.H., 2-twin 10, 1-22H, 1-45H, 1-22V (Royal Plumbing)

