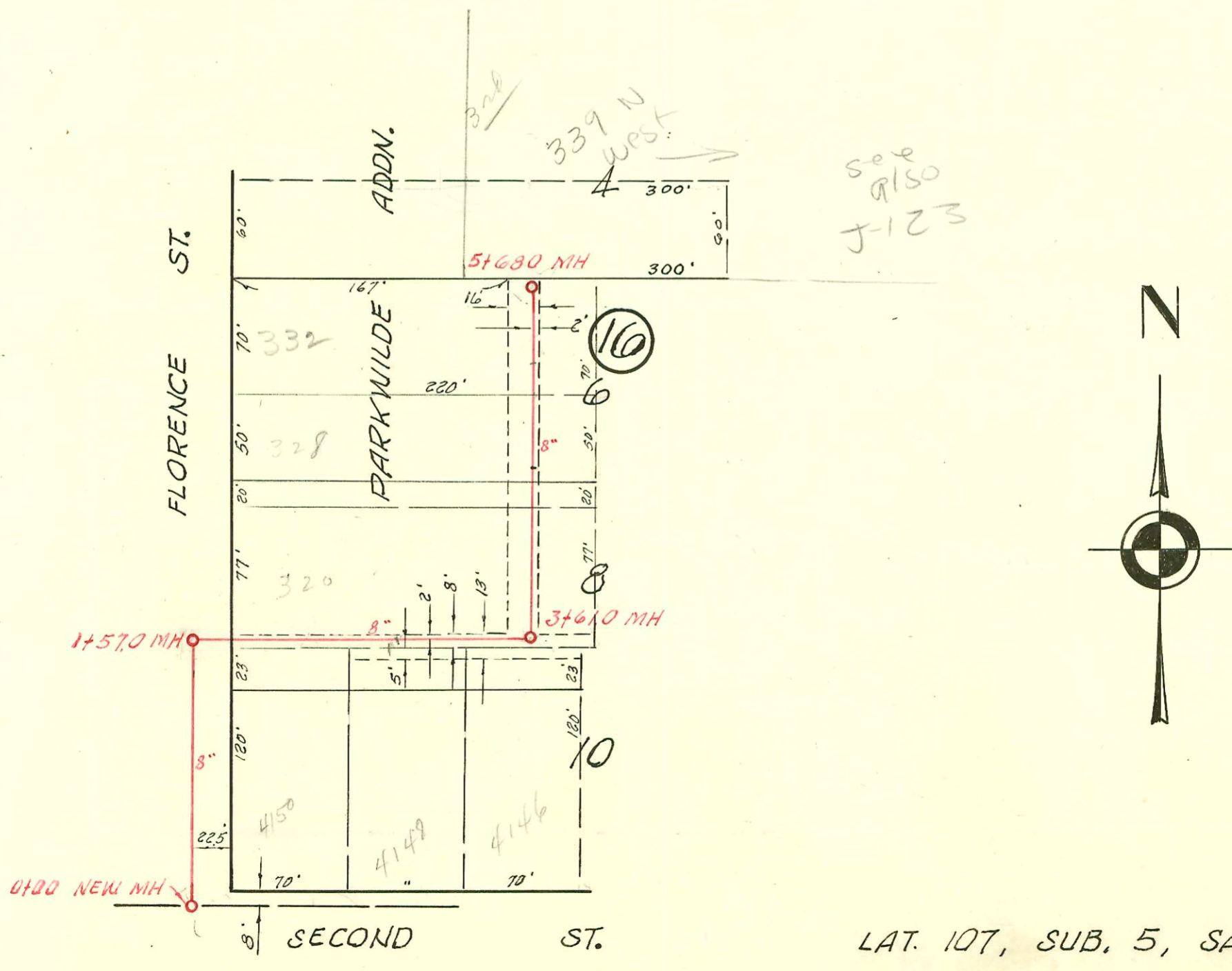


LAT. 119 SUB. 5 5.5.22  
 W. B. CARTER CONST. CO. 11-13-59  
 BK. NO. K-45 B C 29-64  
 EL. BEN. DIST.  
 W.L. LOT 2 WESTFORD ADDN.



see also  
 9150  
 J-123

LAT. 107, SUB. 5, SAN. SEWER 22  
 W. B. CARTER CONST. CO. INC., 2-9-61  
 BK. NO. K-55, PROJ. NO. C29-19

CONSTRUCTION RECORD

SERVICE RECORD

STATION	ELEVATION		Depth	MANHOLE	4-INCH "Y" BRANCHES		No. of Permit		House Number		DATE OF PERMITS	
	Ground	Grade			North West	South East	North West	South East	North West	South East	North West	South East
						+298 (45)						
1+00	113.0	107.19	5.8			+260 (45)						
						+640 (45)						
LINE #4A 0+00	114.2	107.34	6.9	7+86°		Top 7+75		13264 B5960 C44919		3617 Walker 3617 Walker 3617 Walker		8-26-60 7-7-66 6-7-74
0+00	111.9	106.99	4.9	Existing M.H.		+54°						
						+98°						
1+00	113.4	107.19	6.2			+81°		#31417		3608 Walker		4-2-64
2+00	113.2	107.39	5.8			+50°						
3+00	113.0	107.60	5.4			+33°		2000-00434 C28624		1030 S Rep see below McComas		2-16-60 10-20-71
						8" stub W						
4+00	114.2	107.90	6.3			+35° (NW)		#11893		1020 S McComas		10-22-59
5+00	114.7	108.03 out	6.7									
6+00	114.7	108.13 in	6.6									
7+00	114.8	108.20	6.5									
8+00	114.8	108.40	6.4									
9+00	114.8	108.60	6.2									
10+00	114.9	108.65	6.2	7+84°		9" stub W 8" stub N						
LAT. 119 SUB. 5 S.S. 22												
CN #1 0+00	123.0	117.33	11.7	New M.H.		+70°		B1434		1560 N. West		4-6-64
1+00	123.3	117.53	10.8			+43°						
2+00	123.7	117.73	11.0			+80°		11903		1550 N. West		11-20-59
						+28°		B1624 97-4716-2		1535 N. Illinois		3-28-64 7-16-64
						8" stub S.						
CN #2 0+00	126.10	118.50	7.6	Existing M.H.		+70°		C3323		3801 W 15th		5-29-67
1+00	127.1	118.70	8.4			+39°						
2+00	127.5	118.90	8.6			+09°		B1665		1534 N. Illinois		7-16-64
						8" stub S.		12267		1500 N. West		10-12-84
						2+39°		C11273		1535 N. Illinois		3-25-62 11-4-68
LAT. 107, SUB. 5 S. S. NO. 22												
0+00	117.4	111.50	5.9	0+00								
1+00	118.4	111.70 out 111.81 in	6.7 6.7									
2+00	118.6	112.00	6.6	1+57°		North 2+57°		C43437		4150 W. 2nd		2-12-74
						South 2+21°						
3+00	119.0	112.20	5.8			2+79°		13927		4148 West 2nd		3-6-61
						3+50°		15325		4146 W. 2nd		2-20-62
4+00	119.3	112.32 out 112.43 in	7.0 6.9	3+61°		West 3+89°						
5+00	119.4	112.50	6.9			4+59°		C14724		328 N. Florence		7-1-69
6+00	120.4	112.70	7.7			5+27°		16607		332 N. Florence		2-7-63
7+00	120.2	112.84	7.4	5+68°		M.H. TAP		17393		332 N. Florence		12-02-66

2000-00434 - 1030 S. McComas - Arrowhead - 2/24/00 Replaced entire line - on msmt - 4" SCH 40 - 4" Trap  
 sp C61476 - 1500 N. West - 6-7-77 - Kurt E. Henrich - establish no private line (140' SW 2+51.5) TAKE - So. By City Const.?  
 B14052 - 320 N. Illinois - 4-10-61 - Out foot trap 2+31  
 B1762 top 1550 N. Illinois - Vernon Lippold - 8-12-64 top (1+19.5)  
 B2099 top - 1551 N. Illinois - Vernon Lippold - 10-14-64 top (1+55)  
 B2371 top - 1050 N. McComas - In State Reg - 2-19-65 (1+96)