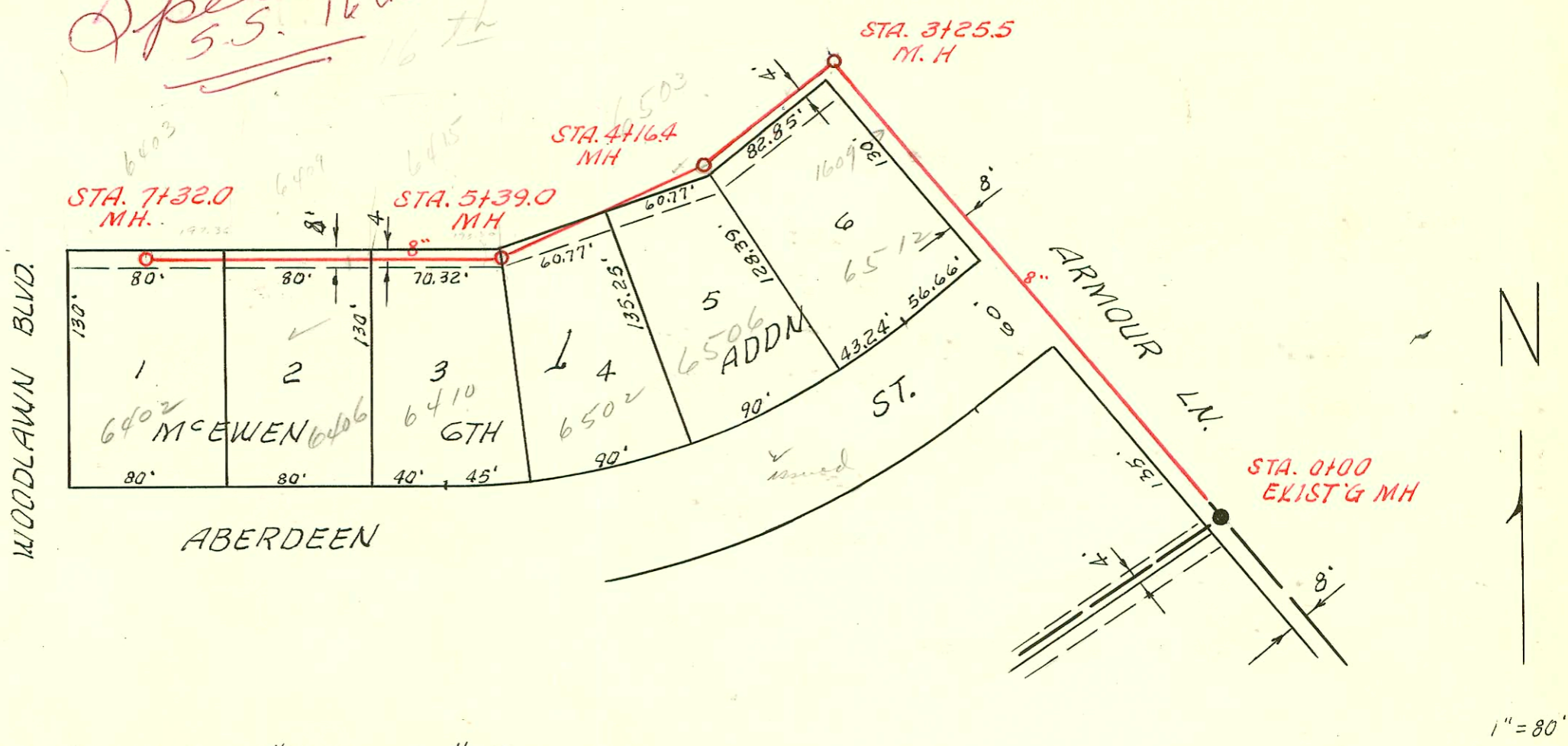
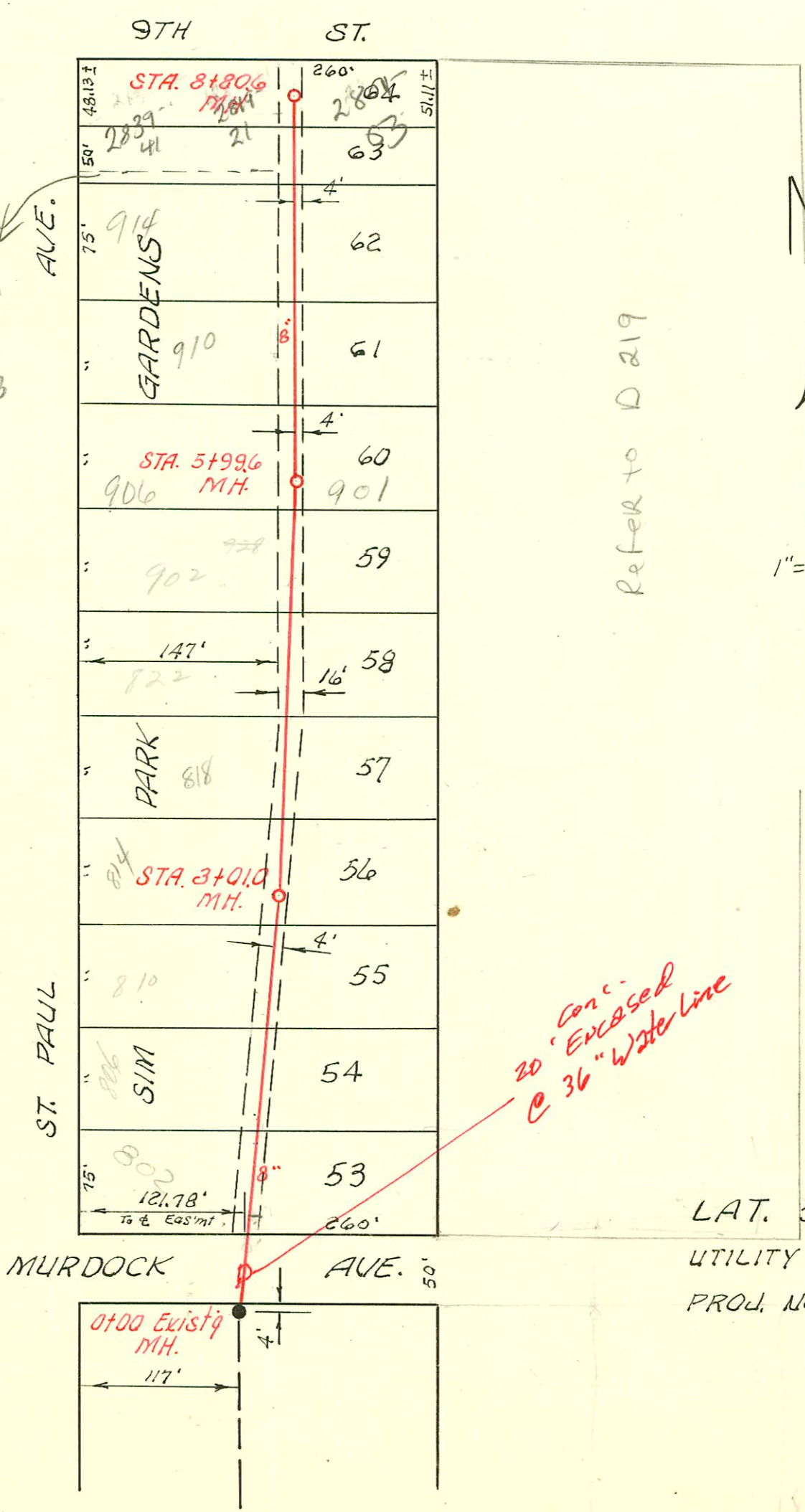


Special fee
5.5. 16th



LAT. 76, D. C. S. #2, S. S. #12
 UTILITY CONT. INC., NOV. 24, 1959
 PROJ. NO. C29-38, BK. NO. K-64-A

2839-41 w 9th
10' PAW FSN + granted
to 2839-41 w 9th
95' follows
5' 10' of w 150'
of lot 63



Refer to D 219

LAT. 52, S. S. #22
 UTILITY CONTR. INC. 11-25-59
 PROJ. NO. C 28-44, BK NO. K-50

CONSTRUCTION RECORD

SERVICE RECORD

LAT. 76, D.C.S. #2, S.S. #12

LAT. 52, S.S. #22

STATION	ELEVATION		Depth	MANHOLE	4-INCH "Y" BRANCHES		No. of Permit		House Number		DATE OF PERMITS	
	Ground	Grade			North West	South East	North West	South East	North West	South East	North West	South East
0+00	197.5	189.07	8.4	0+00 EXIST'G MH								
0+03.0				Beq. proj.								
1+00	199.5	189.47	10.0		Y WEST							
2+00	201.1	189.87	11.2		2+41.0							
3+00	202.1	190.27	11.8									
	202.0	192.03	10.0	3+25.5	NORTH	SOUTH						
4+00	203.0	192.38	10.6		3+45.5	3+47.5	B2689		6503 E. 16th		2-2-65	
	203.1	192.46	10.6	4+16.4	4+20.0							
					4+53.5		11922		6506 Aberdeen		11-20-59	
5+00	204.3	192.89	11.4		4+77.0							
	204.1	193.08	11.0	5+39.0	5+05.0		12016		6503 E. 16th		12-1-59	
		193.50	10.6		5+45.0		B2420		6415 E. 16th		12-1-64	
					5+51.0		15852		6410 Aberdeen		7-6-62	
6+00	203.9	194.76	9.1		6+23.0		B3419		6409 E. 16th		1-13-65	
					6+42.6		11963		6404 Aberdeen		12-4-59	
7+00	204.8	196.76	8.0		7+05.0	7+08.0	B3890	B4939	6403 E. 16th	6402 Aberdeen	7-29-65	1-10-63
	205.1	197.36	7.7	7+32.0								
					Y West	Y East						
0+00	115.8	109.36	6.4	0+00 EXIST'G MH								
1+00	115.5	109.56	5.9		0+72.0	0+70.0	3376		802 N. St. Paul		5-28-81	
2+00	115.3	109.76	5.5		1+58.5	1+43.0	13699		806 N. St. Paul		12-16-60	
3+00	115.7	109.96	5.7	3+01.0	2+17.0		#17308		812 N. St. Paul		6-21-63	
					2+27.0							
					2+92.0							
4+00	115.5	110.16	5.3		3+08.0	3+70.0	17587		814 N. St. Paul		1-8-67	
					3+72.0		12012		818 N. St. Paul		11-30-59	
					4+43.0		48954				3-21-75	
5+00	116.1	110.36	5.7		4+61.0		14999		822 N. St. Paul		12-1-61	
					5+25.0	5+23.0	97369		902 N. St. Paul		3-4-67	
					5+94.0	5+92.0	14863		902 N. St. Paul		10-23-61	
				5+99.6			#12423				3-31-60	
6+00	116.0	110.56	5.4		6+72.6	6+70.6	#12167		910 N. St. Paul		1-13-69	
7+00	115.5	110.76	4.7		7+43.0		15485		910 N. St. Paul		1-13-69	
					7+69.0		49734				6-2-75	
8+00	116.0	110.96	5.0		8+20.0		11934		914 N. St. Paul		11-27-59	
					8+35.0							
					8+70.5	8+68.5	C22543		918 N. St. Paul		5/31/72	
	115.4	111.12	4.3	8+80.6								

#13938 - 6512 Aberdeen - Robert Building - 3-9-61 (3+72.5)
 Per #55779 - 25" spec for joint - 6415 E. 16th - Vernon Lippard - 12-1-64
 Per #63086 - 25" spec for joint - 6503 E. 16th - George Lippard - 1-19-65
 Per #74971 - 25" spec for joint - 6403 E. 16th - Henry Kelly - 7-30-65
 Per #74922 - 25" spec for joint - 6409 E. 16th - 7-30-65