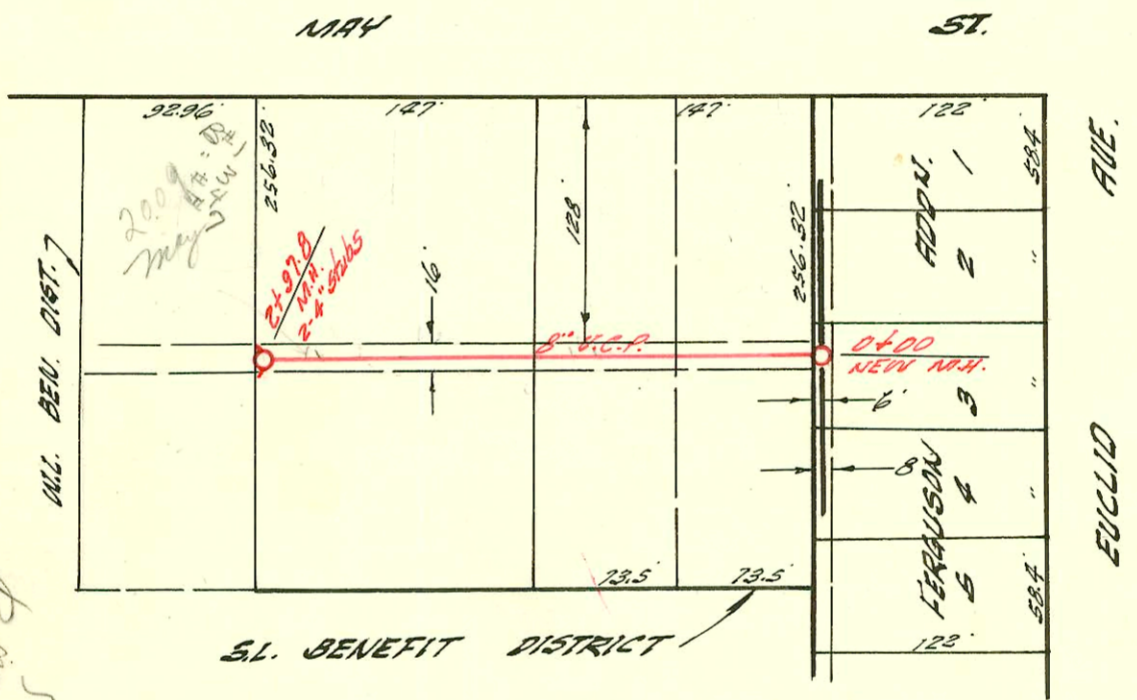
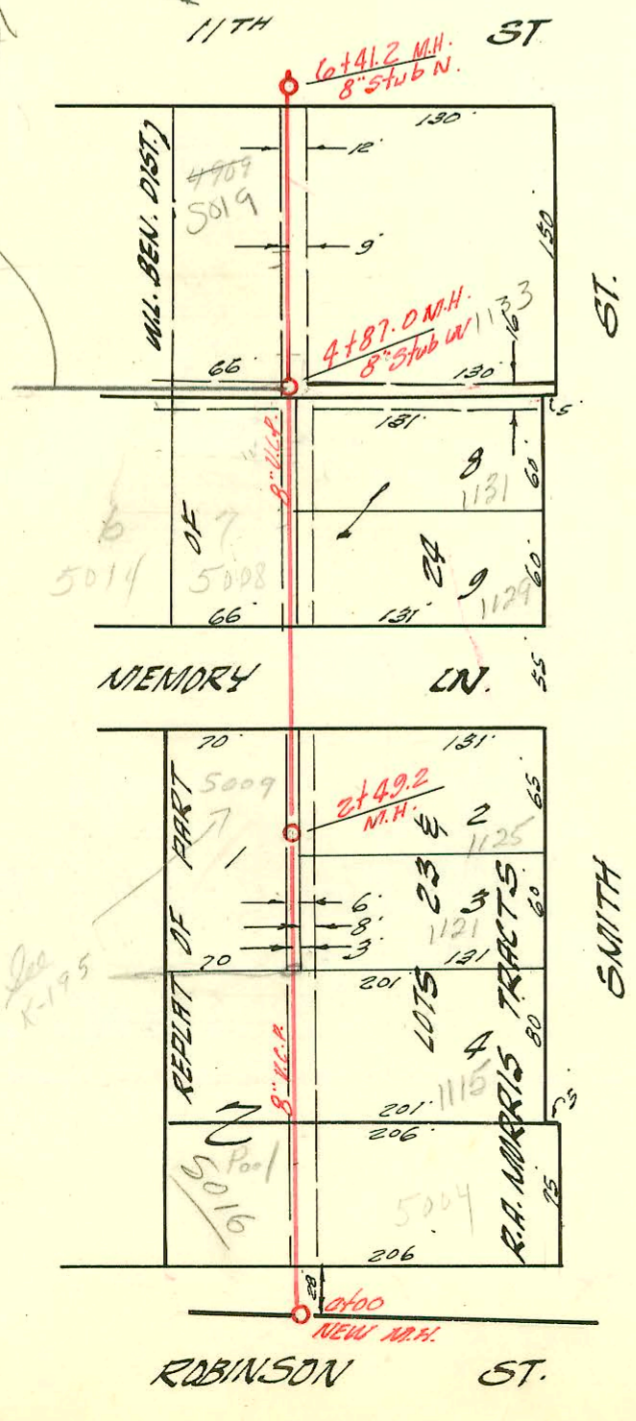


LATERAL 140 SUB. 5 S.S. 22
 W.B. CARTER CONSTR. CO. 3-22-60
 BK. NO. K-48 PROJ. NO. C29-107



SUB. LAT. 1 LAT. 10 SUB. 3 S.S. 22
 UTILITY CONTR. INC. MARCH 22 1960
 BK. NO. K-61 PROJ. NO. C28-104



LAT. 116 SUB. 5 S.S. 22
 W.B. CARTER'S CONST. CO. MARCH 23 '60
 BK. NO. K-58 PROJ. NO. C29-61

Memory LN & 11TH ST
 Refer to GIS
 Line Number Baled
 NO ORIS RECORD
 of CONNECTIONS
 Refer to AITEL
 TV LOGS

See K-195

CONSTRUCTION RECORD						SERVICE RECORD						
STATION	ELEVATION		Depth	MANHOLE	4-INCH "Y" BRANCHES		No. of Permit		House Number		DATE OF PERMITS	
	Ground	Grade			North West	South East	North West	South East	North West	South East	North West	South East
9+00	122.0	115.62	6.4					2000-01910	624	R	see Below	8-28-00
10+00	121.9	115.92	6.0					12934	624	R		6-10-60
11+00	122.4	116.22	6.2					14 22 389				10-27-84
	122.3	116.41 IN	5.9	11+21.6	+70° (N.W.)			15922				7-24-62
	122.1	116.62	5.5	11+22.6 (W. Sub)	+72° (N.W.)			15938				7-24-62
LAT. 140 SUB. 5 S.S. 22												
0+00	119.9	112.05	7.8	Existing M.H.	North 4 +76°	South 4 +78°		12424	319 N. Hoover	309 N. Hoover	3-30-60	7-15-68
1+00	120.9	112.45	8.4		+17°	+19°						
					+77°	+79°		12761		301 N. Hoover		5-13-60
2+00	120.4	112.85	7.5		+22°	+24°						
	120.9	112.29	7.9	2+35°								
SUB. LAT. 1 LAT. 10 SUB. 3 S.S. 22												
0+00	103.4	98.39	5.0	New M.H.	+247°	+227°						
1+00	102.9	98.59	4.3	Tap	+95°	+93°		C 631	2009 May		10-28-66	
					+403			2632	2009 May		10-28-66	
2+00	103.3	98.79	4.5		+41.6	+65°						
					+67°							
	103.2	98.98	4.2	2+97.8	+405°	+385°	12845		2009 May		5/27/00	
					4+56.5 SW & NW		14619		2009 May		11/5/81	
LAT. 116 SUB. 5 S.S. 22												
0+00	126.2	116.73	9.5	New M.H.	+78.9°		558		5016 Robinson			6-12-80
1+00	126.1	116.93	9.2		+72°	+92°		09224	5004 Robinson			6-21-68
2+00	126.1	117.13	9.0		+273°	+253°		12706	115 Smith			4-27-60
					+07°	+05°			1101 Smith			11-19-64
	127.2	117.23	10.0	2+492	+515°	+535°			1125 Smith			
3+00	127.0	117.33	9.7		+89°	+87°			1129 Smith			
4+00	126.7	117.53	9.2		+15°	+17°		92-390617	1131 Smith	see Below		10-26-92
	126.2	117.70	8.5	4+87°	8" Sub W				1133 Smith			5-15-89
5+00	126.3	117.73	8.6		+96°			23145				
					5+511			12676	1133 Smith			4-20-60
6+00	127.1	117.93	9.2		+03°							
	127.9	118.01	9.9	6+412	8" Sub N.							

Rep- 2000-01910- 624 N Gilda St - Boardman - 4" SCH 40 - 98' N of MH 8+49.5 (9+47.5) ITWIN CO, 1072, 1H22, 4H45

C2524 - 5008 Memory Lane - 7-1-71 - Keith Hillard (4+40.4)
Tap C25242 - 5014 Memory Lane - 7-1-71 - Keith Hillard (4+62.0)

92-38784-7 10-26-92 1131 N. Smith NIC - Tap 4+47 4" SDR35