



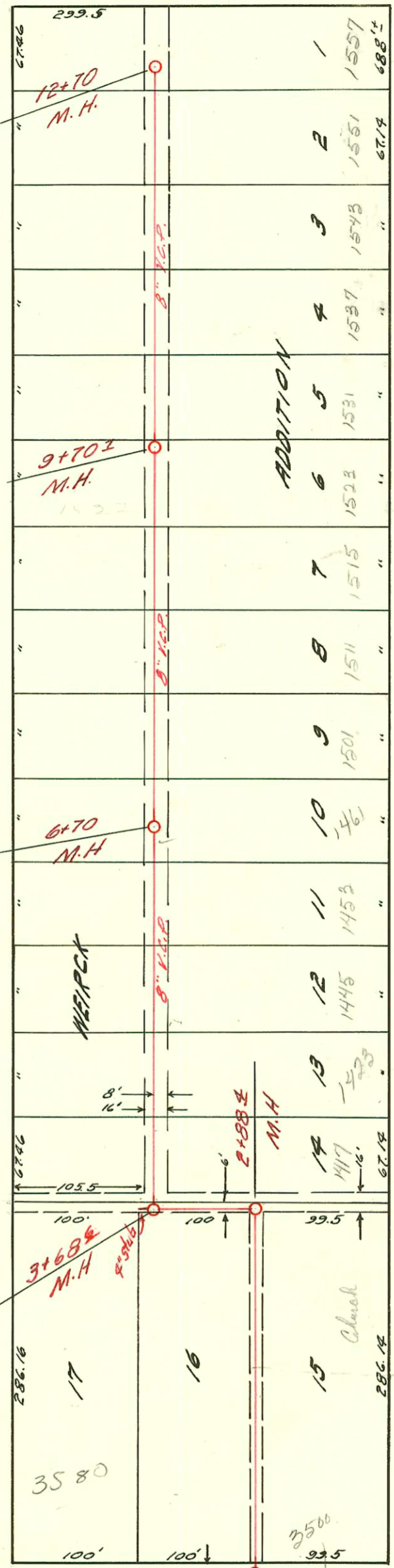
water type

15TH ST.

ADDITION

REPAIR

M.L.



ST.

HIGH

13TH ST.

ST.

STATION 0+00
NEW M.H.

LATERAL 121 SUB. 5 S.S. 22
MID-STATES CONST. CO. INC. MAY 23, 1966
PLOT NO. C29-71 BK. NO. K-57

