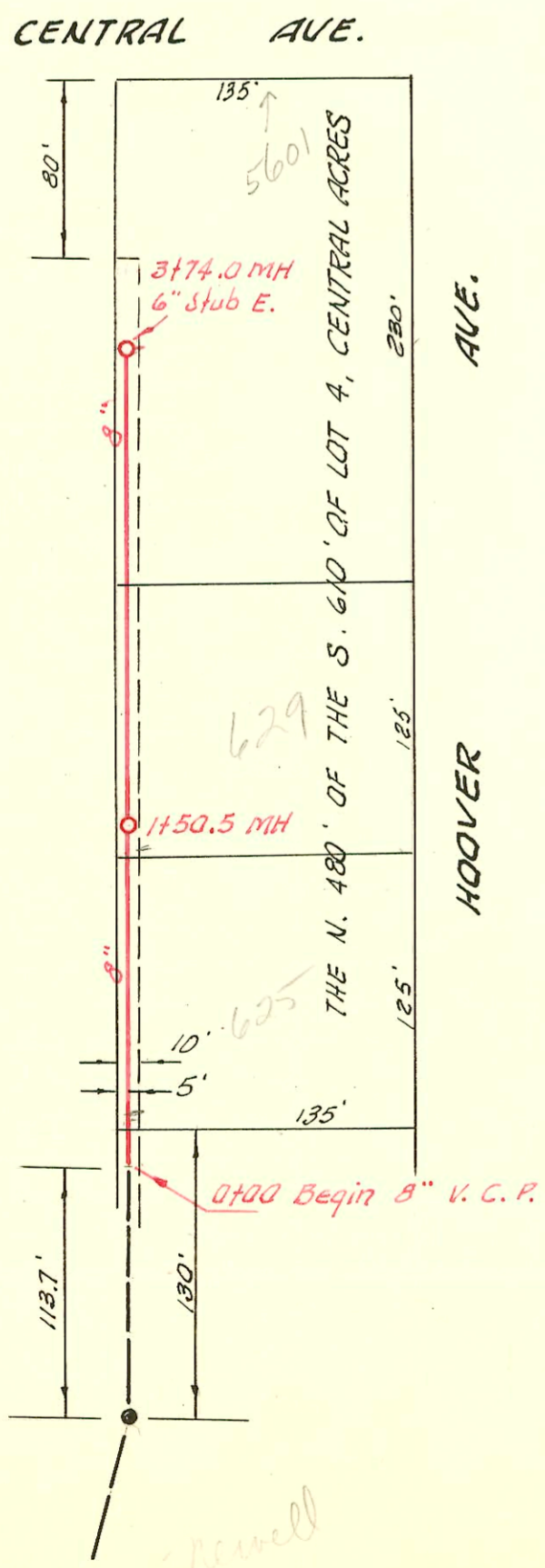
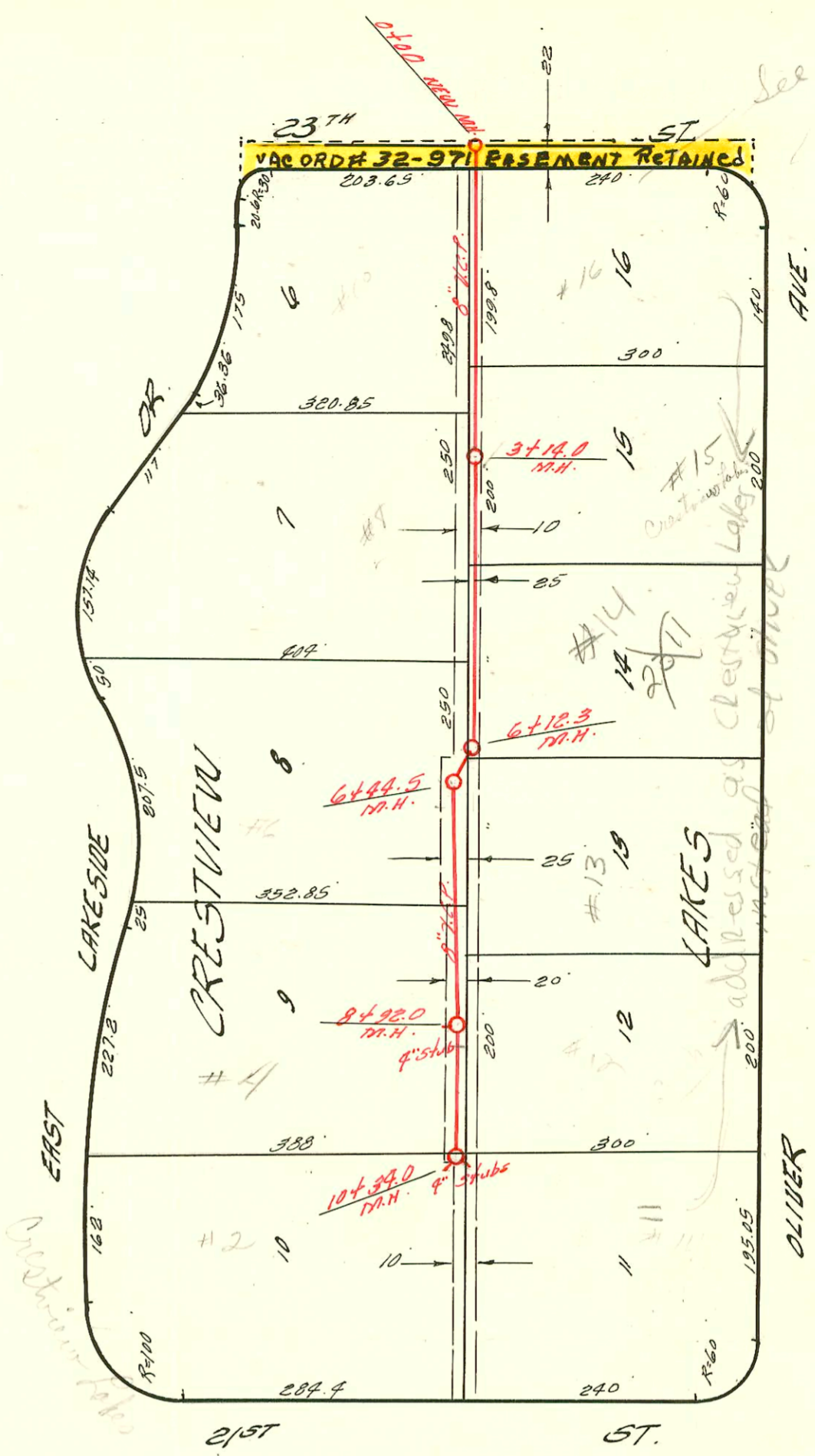


See S-39



LATERAL 2 SUB 1 S.S. 23  
 HENSLEY ENTERPRISES INC. JUNE 23 '60  
 BK. NO. K-51A PROJ. NO. C28-50

LAT. 158, SUB. 5, S. S. NO. 22  
 UTILITY CONT. INC., JAN. 16, 1961  
 BK. # K-52 PROJ. NO. C20-52

1" = 80'



### CONSTRUCTION RECORD

### SERVICE RECORD

STATION	ELEVATION		Depth	MANHOLE	4-INCH "Y" BRANCHES		No. of Permit		House Number		DATE OF PERMITS	
	Ground	Grade			North West	South East	North West	South East	North West	South East	North West	South East
0+00	197.3	189.00	8.3	NEW D.H.	+70 <sup>5</sup>	+48 <sup>5</sup>						
1+00	199.6	191.00	8.6			+22 <sup>0</sup>						
2+00	202.7	193.00	9.7		+77 <sup>0</sup>							
3+00	203.7 203.8	195.00 195.30 197.00	8.7 8.5 6.8	3+14 <sup>0</sup>		+59 <sup>0</sup>						
4+00	204.9	197.84	7.6		4+45.7 <sup>0</sup>	+51 <sup>0</sup>	6865		#3 Crestview Lks		10-27-82	
5+00	207.6	197.74	9.9			+42 <sup>0</sup>	2004 01496		#14 Crestview Lks			5-24-04
6+00	209.0 208.3 210.1	198.14 198.19 198.42	10.9 10.1 11.7	6+12 <sup>3</sup> 6+44 <sup>5</sup>								
7+00	210.4	198.54	11.9		6+63 <sup>0</sup>		13529		#6 Crestview		11-3-60	
8+00	210.7 211.5	198.94 199.30	11.8 11.8			+82 <sup>0</sup>	13130		#13 Crestview			7-28-60
9+00	211.6	199.34	12.3	8+92 <sup>0</sup> 4" stub W.			13043		#4 Crestview			6-27-60
10+00	211.4 211.8	199.74 199.86	11.7 11.9	10+34 <sup>0</sup>	4" stub S.W. 4" stub E	+17 <sup>5</sup>	13145		#12 Crestview			8-4-60
							122768		#11 Crestview			12-22-64
0+00	114.85	122.8	8.0	Req. 8" V.C.P.		+19 <sup>0</sup> 6"	#2018 15245		625 N Hoover		12-24-60	3-5-62
1+00	115.05 115.15	122.9 122.9	7.8 7.7	1+50 <sup>5</sup>		+77 <sup>0</sup>						
2+00	115.25	122.5	7.2			+43.3 <sup>5</sup> +54 <sup>5</sup>	2221 15005		625 N Hoover		12-24-60	12-4-61
3+00	115.45 115.60	123.5 123.6	8.0 8.0	3+74 <sup>0</sup>	6" stub E	2+28 <sup>5</sup> 2+76 <sup>5</sup> 3+28 <sup>0</sup>	14703		56010 Central			9-20-61

LAT. 158, SUB. 5, S. S. NO. 22

14454 - top - # 15 Crestview Lks - 7-18-61 Gated Building (3+27.0)