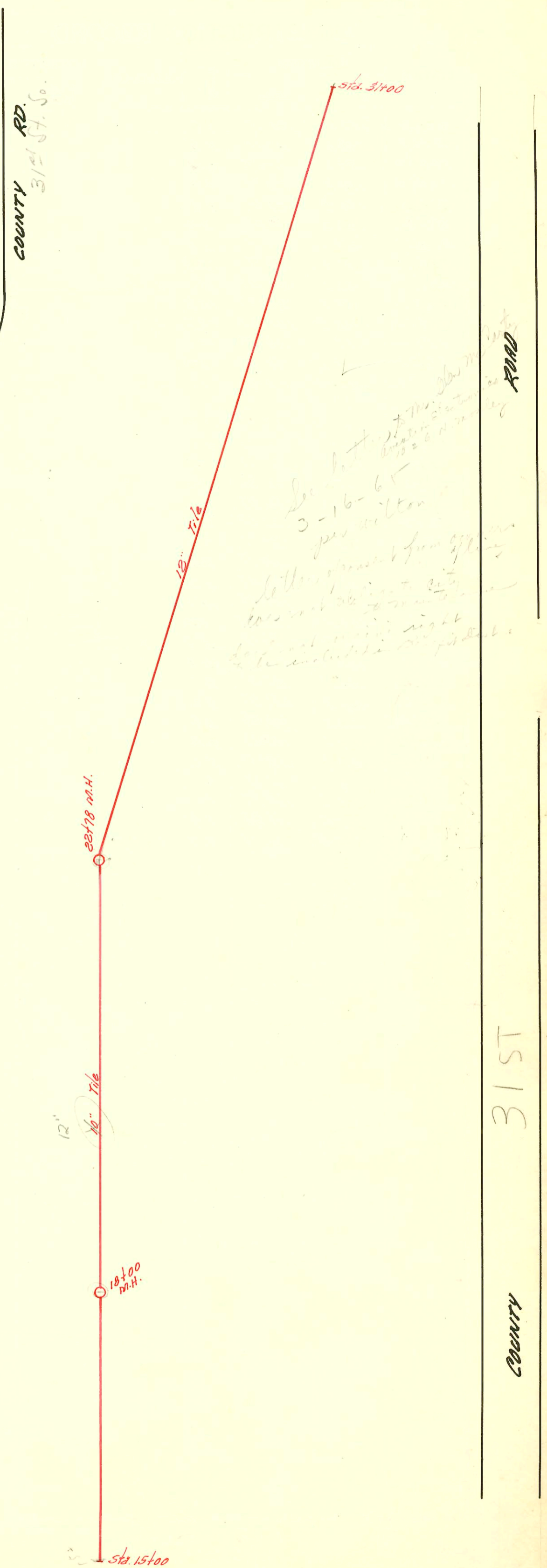
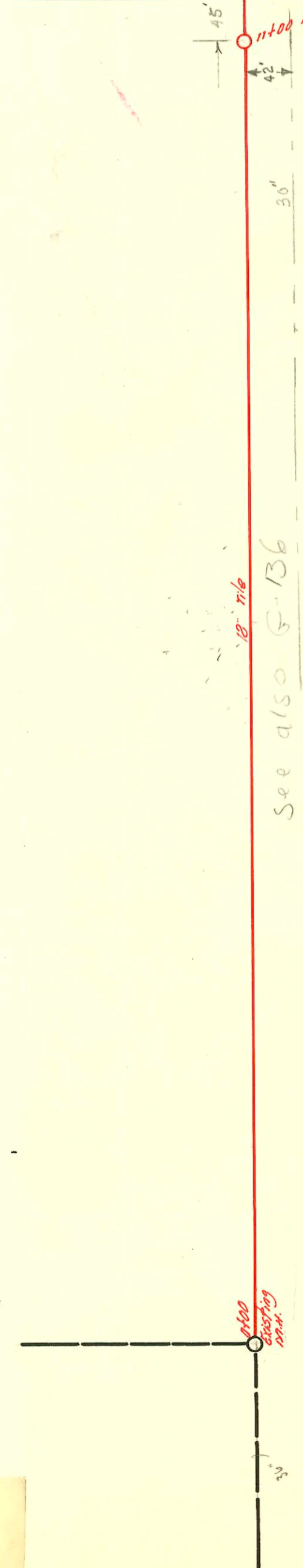


SANITARY SEWER  
 MUNICIPAL AIRPORT TO  
 WICHITA DISPOSAL PLANT  
 ER. PLAN JUNE 28 '60

see also G-136



See letter to Mr. [unclear]  
 3-16-65  
 per Milton  
 letter, [unclear] from [unclear]  
 [unclear] [unclear] [unclear]  
 [unclear] [unclear] [unclear]

ROAD

31ST

COUNTY

COUNTY RD. 31ST S. So.

