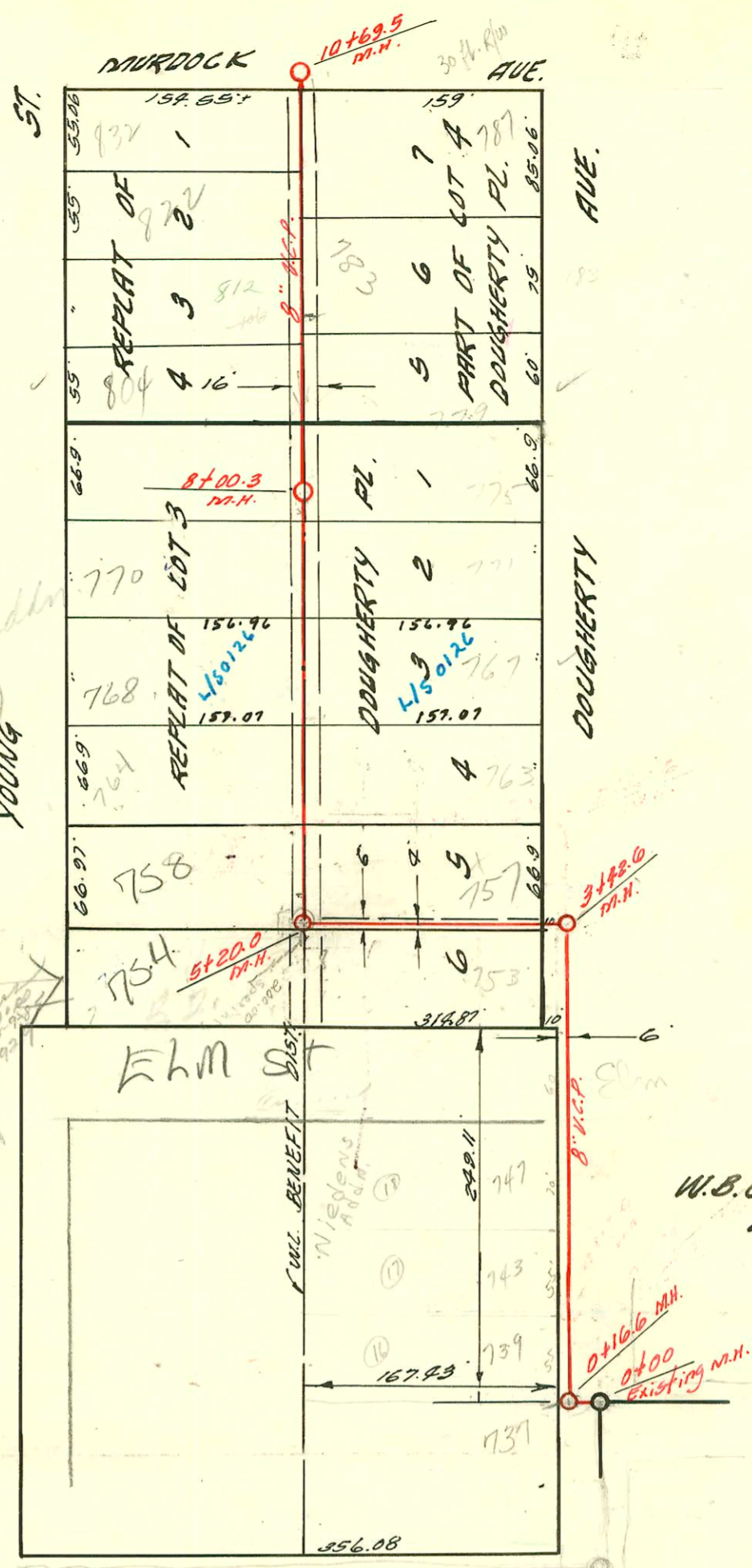


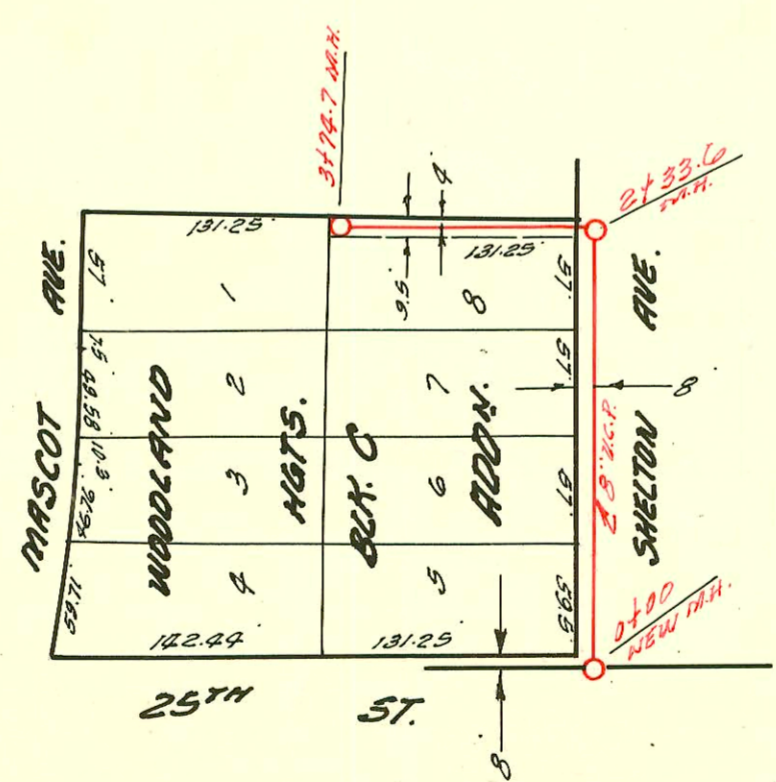
Plot Book
7-46

Needles Addr
(file)
YOUNG

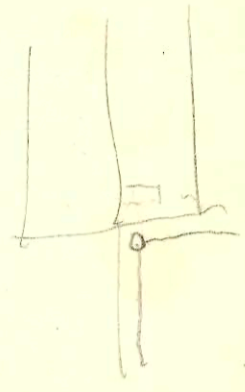
2. COM. See
DEB of Sheppard



LAT. 112 SUB. 5 S. 5. 22
W.B. CARTER CONST. CO. JULY 14 '60
BK. NO. K-48 PROD. NO. C29-42



RELOCATION OF LAT. 18 DIST. T 9. S. 20
PRIVATE JOB AUGUST 4 '60
BK. NO. K-53



CONSTRUCTION RECORD						SERVICE RECORD						
STATION	ELEVATION		Depth	MANHOLE	4-INCH "Y" BRANCHES		No. of Permit		House Number		DATE OF PERMITS	
	Ground	Grade			North West	South East	North West	South East	North West	South East	North West	South East
0+00	121.8	112.57	9.2	Existing M.H.								
	122.1	112.60	9.5									
1+00	122.0	112.87	9.1	2+16.6	+24°		2001-02294	743 N	743 N	9-13-01		
					+87°		C21682	Dougherty	Below	11-9-70		
2+00	122.0	113.07	8.9		+44°		C21683	747 N	747 N	11-9-70		
					+69°			Dougherty				
3+00	121.8	113.27	8.5		+00°							
	121.6	113.36	8.2	3+42.6								
4+00	121.8	113.57	8.2									
5+00	121.6	113.77	7.8		+18° (N)	+20° (S)	13097	15698	757 N	753 N	7-19-60	5-31-62
	121.3	113.81	7.5	5+20								
		113.93	7.4									
6+00	121.3	114.07	7.2									
					+38°							
7+00	121.4	114.27	7.1		+91°	+89°	26633	13081	758 N	763 N	12-12-02	5-9-85
8+00	121.5	114.47	7.0		+55°		4th P.V.C. 40	9459677	768 N	767 N	4-4-72	4-26-91
					+53°		C31337	13220	Young	Dougherty		11-2-60
9+00	123.0	114.67	8.3		+20°	+18°	B5758	13082	770 N	771 N	6-3-66	7-14-60
					+81°	+79°		13478	Young	Dougherty		10-27-60
10+00	122.5	114.87	7.6		+55°		B12183		804 N		1-14-69	
					+77°			13386	Young	Dougherty		10-17-60
					+71°			6870				10-28-82
					+34°		F2765		812 N		1-30-64	
					+77°	+75°	B1601		Young		7-2-64	
					+15°	+13°		15572				5-2-62
	122.9	115.01	7.9	10+69.5	+48°		C18245		832 N	787 N	3-4-70	
									Young	Dougherty		

RELOCATION OF LAT. 18 DIST. T. S.S. 20

0+00	127.3	119.14	8.2	NEW M.H.
1+00	128.1	119.34	8.8	
2+00	128.9	119.54	9.4	
	128.3	119.61	8.7	2+33.6
3+00	128.3	119.70	8.6	
	128.5	119.84	8.5	3+74.7
		119.98	8.5	

2001-02294-9/13/01-743 N Dougherty - Reddi Root - 4" SCH 40 15'4" pipe - 1 TWINDO, 2 Fernco Repair

C5660-739 Dougherty - 11-8-67 - Donald Thompson - top (+79.3)
 16866 - top - 737 N Dougherty - 9-28-63 - Bowens Alley (top in M.H. +716.6)
 B-234 - top - 783 N Dougherty - 10-7-63 - Kennedy Alley (+709.5)