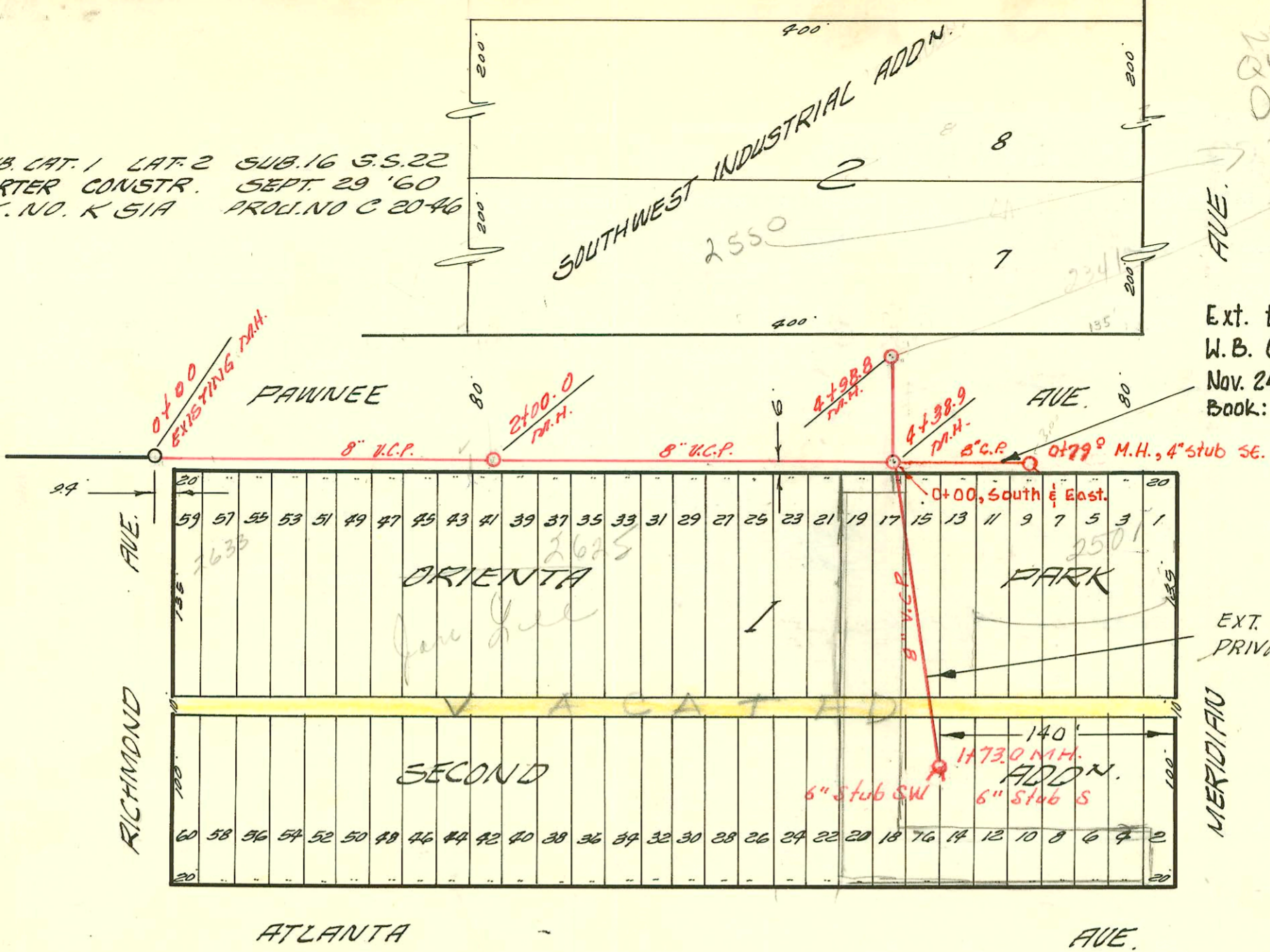


SUB. CAT. 1 LAT. 2 SUB. 16 S.S. 22
 W.B. CARTER CONSTR. SEPT. 29 '60
 BK. NO. K 51A PROJ. NO. C 20-46



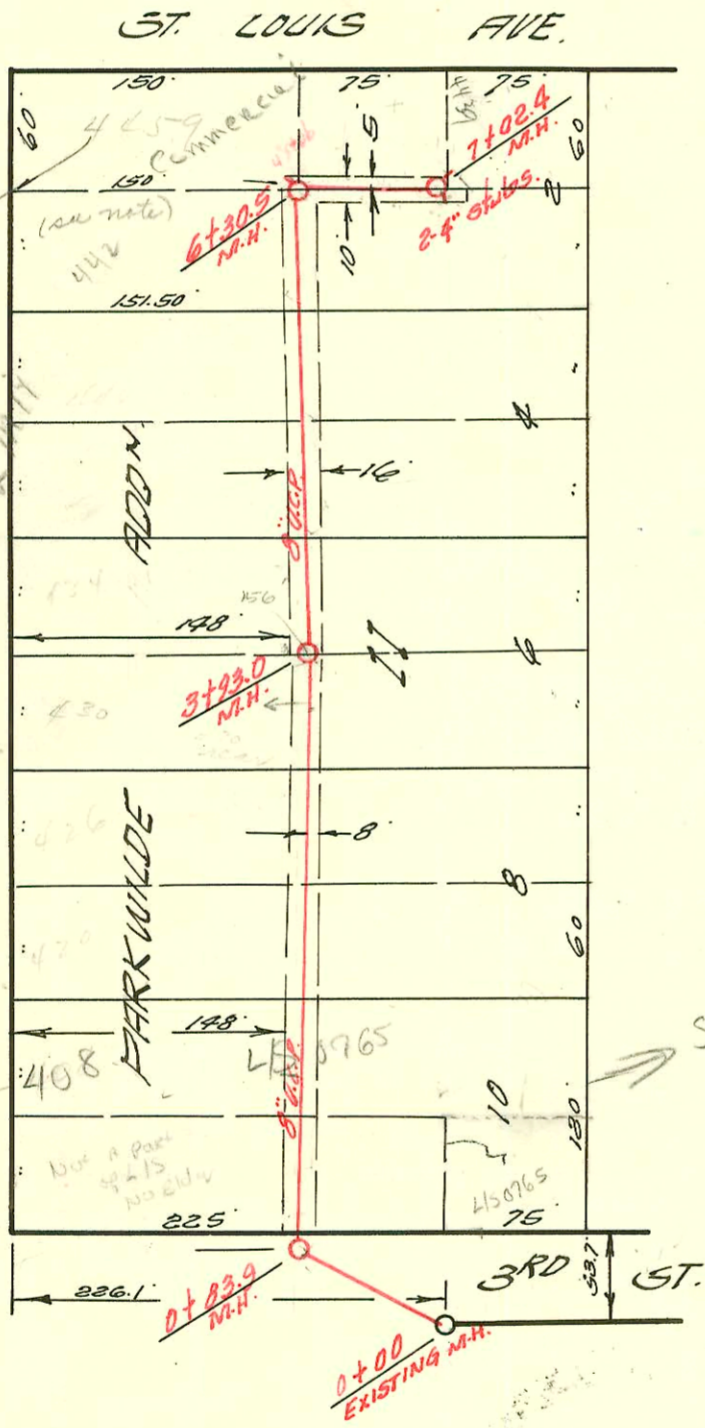
179A
 New QUIZ TRIP
 Dandling ER
 to Ds EYT
 and will slo
 & Recode
 sds sewer
 for 2550

Ext. to Lat. 2, Sub. 16, S.S. No. 22
 W.B. Carter Construction Co.
 Nov. 24, 1969 Private Project
 Book: S.S. J.K. 9

1" = 80'

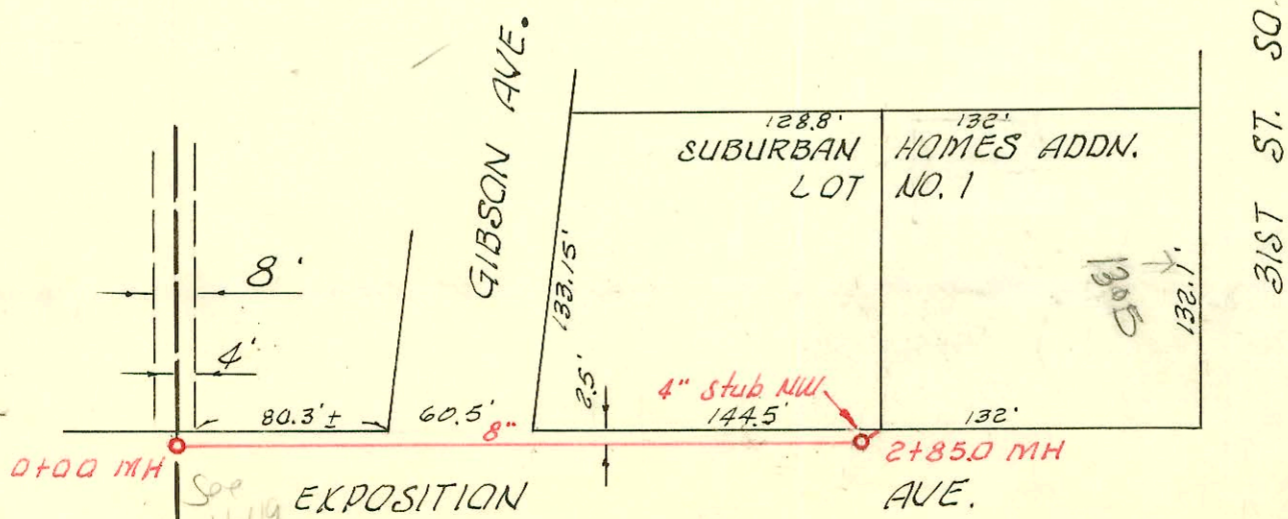
EXT. TO LAT. 2, SUB 16, S.S. NO. 22
 PRIVATE CONTRACT 12-66
 BK NO. K-83

4459 W. St Louis
 Sewer
 Do NOT issue
 permit until
 sewer has
 been
 remodeled
 1-8-03
 BSP
 Young



LATERAL 148 SUB. 5 S.S. 22
 W.B. CARTER CONSTR. SEPT. 29 '60
 BK. NO. K-58 PROJ. NO. C 20-28

See endosal
 450765



LAT. 40, SUB 2, S. S. NO. 22
 W. B. CARTER CONST. CO. INC., JAN. 1961
 BK. NO. K-64. PROJ. NO. C 20-55

