

Block 2

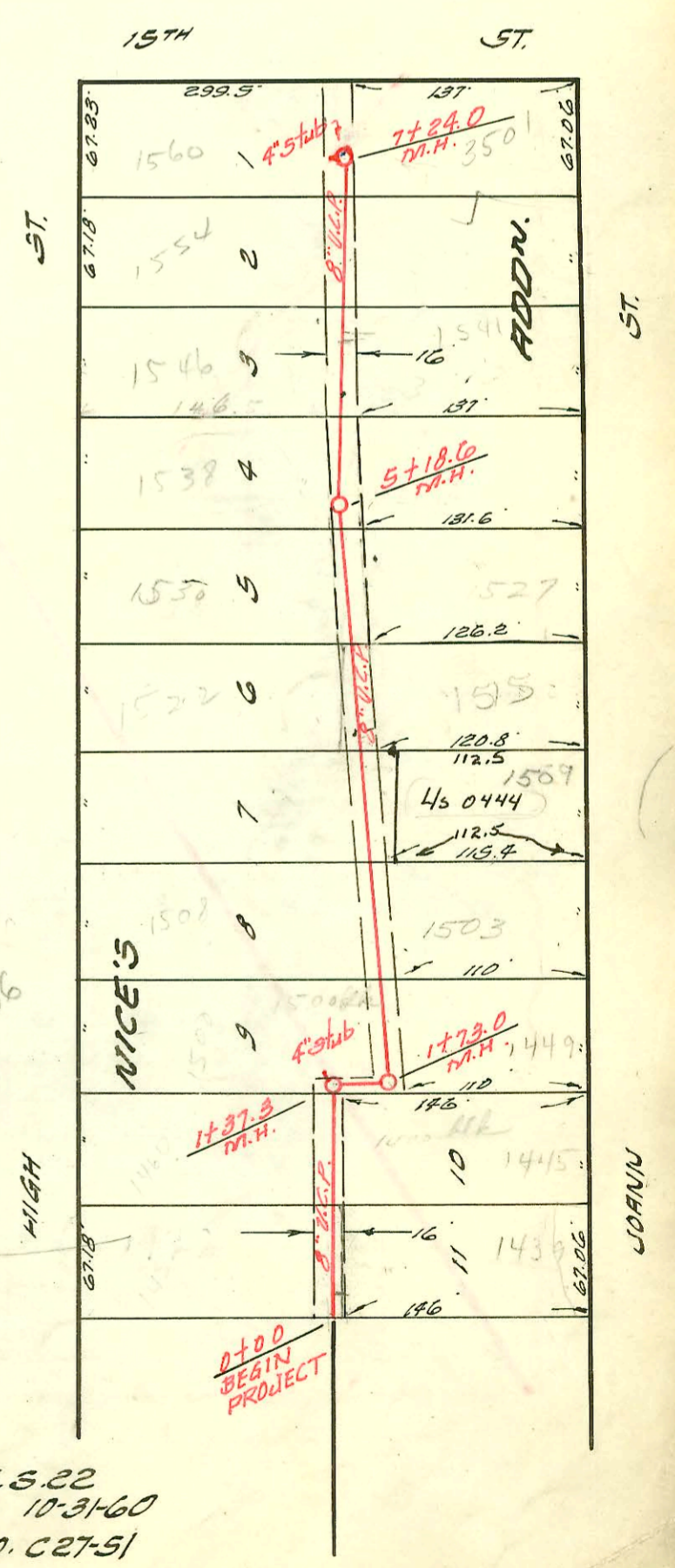
Extension Lat. 144 Sub. 5 S.S. 22
 Private Contract Mid-States Constr. Co.
 Book No K 76A Booked 4-24-64
 Plan attached 9-6-1-59

See recorded easement # 20682
 on file 10-17-69
 (with 10' Lot 13 etc)

see also on further to the
 the north 6 ft of Lot 12
 (per Walton)

S 1/2 Lot 2
 W 1/4
 E 3/4
 Lot 3
 N 1/4
 Add

LATERAL 144 SUB. 5 S.S. 22
 W.B. CARTER CONST. CO. 10-25-60
 BK. NO. K-38 PROJ. NO. C20-13



Lot 11
 LOT SPLIT SUB 205406
 2/20/04

LATERAL 21 SUB. 5 S.S. 22
 W.B. CARTER CONST. CO. 10-31-60
 BK. NO. K-61 PROJ. NO. C27-51

CONSTRUCTION RECORD

SERVICE RECORD

STATION	ELEVATION		Depth	MANHOLE	4-INCH "Y" BRANCHES		No. of Permit		House Number		DATE OF PERMITS	
	Ground	Grade			North West	South East	North West	South East	North West	South East	North West	South East
0+00	127.0	119.30	7.7									
1+00	127.0	119.50	8.1		1+00 ^B		13400		1634 N. west		10-24-60	2-2-71
						+13.5		C25521 13609	1632 N. west			11-14-60
	126.9	119.60	7.3	1449.5					1637 N. Illinois			
2+00	127.0	119.80	7.2			+62.7		C17164	1701 N. Illinois		12-3-69	
						+60.7		C18241	1709 N. Illinois			3-4-70
						+35.0		13610	1642 N. west		11-14-60	
						+33.0		C10765	1717 N. Illinois			10-2-68
3+00	127.4	120.20	7.2		3+00 ⁰							
					3+50.6 ^{THP}							
					3+78.5	+86.5	20943		1710 N. west		6-24-83	
4+00	128.2	120.60	7.6			3+95.6		B5941	1725 N. Illinois			11-30-69
	128.6	120.84	7.8	4+58.6					1731 N. Illinois			5-24-65
5+00	129.8	121.00	8.8			+81.5						
						+12.0		13580	1734 N. west		11-29-60	
						+43.5		B4297	1739 N. Illinois			12-7-65
6+00	130.3	121.40	8.6									
						+52.5						
						+50.5						
7+00	130.6	121.80	8.8			TAP 6+66.5		C34350	1747 N. Illinois			8-16-72
						+3.5		14050	1732 N. west		4-6-61	
	131.7	122.00	9.7	7+43.0								
LATERAL 21	SUB. 5		S.S. 22									
0+00	124.6	118.96	5.6	8.9 ¹² Proj.								
						+10.0	2+12.0	13497	1452 N. High		11-8-60	
						0+88.3	0+86.3	13498	1467 N. High	1445	11-8-60	1-11-77
1+00	124.0	119.16	4.8									
	124.2	119.24 out	5.0									
	124.0	119.35 in	4.8	1+37.3	4" stub n.w.			13499	1500 n High		11-8-60	
		119.51	4.5	1+73.0								
2+00	124.1	119.56	4.5			+97.0						
						+61.5		13677	1508 N. High		12-9-60	
3+00	124.5	119.76	4.8			TAP +73.0		C24127	1503 N. High			5-5-71
						+19.0	+17.0	13776	1516 N. High	1509	1-16-61	10-10-79
						3+85.0	3+83.0	13675	1522 N. High		12-7-60	
4+00	125.0	119.94	5.0					18090	1515 N. High		12-6-82	4-9-87
						+64.0	4+73.0	13533	1530 N. High	1527	11-4-60	6-27-66
5+00	126.0	120.16	5.8			4+75.8		B5909	1537 N. High			
	125.7	120.21	5.5	5+18.6								
						+28.0	+26.0	13519	1530 N. High		10-31-60	
						5+87.0	5+85.0	13518	1546 N. High		10-31-60	5-10-88
6+00	126.0	120.36	5.6			6+30.0		13543	1554 N. High	1541 B	11-5-78	9-1-65
						+62.0	6+64.0				11-5-78	
7+00	126.3	120.56	5.6									
						7+15.5						
	126.2	120.62	5.6	7+24.0	4" stub w			13517	1560 N. High		10-31-60	
Extension Lat. 144, Sub. 5, S.S. 22												
0+00	131.6	122.30	9.3	0+00 Exst. MH = 7+43 Lat 144		North	South					
						0+60.2	0+58.2					
1+00	131.1	122.70	8.4				1+57.2					
2+00	131.6	123.10	8.5									
						2+14	TAP +57.4	129357	1742 N. Illinois			12-9-71
	131.5	123.46	8.0	2+89 ² MH End 8"								
				3+21 End 6" Stub				B1239	3811 N. 17th		5-13-64	

C34744 - 1637 N. Ill. - Small Thompson - 6-4-71 - top ? on map 1+13.5?
 #13299 top 1634 N. west - with note 10-24-60 (+37)
 13630 top 1638 N. west - with note 11-17-60 (+58.5)
 B. 1911 top +350 w. 17th St. - with note 4-6-64
 B. 1964 top - 3501 w. 15th - with note 9-16-64 by (7+13)