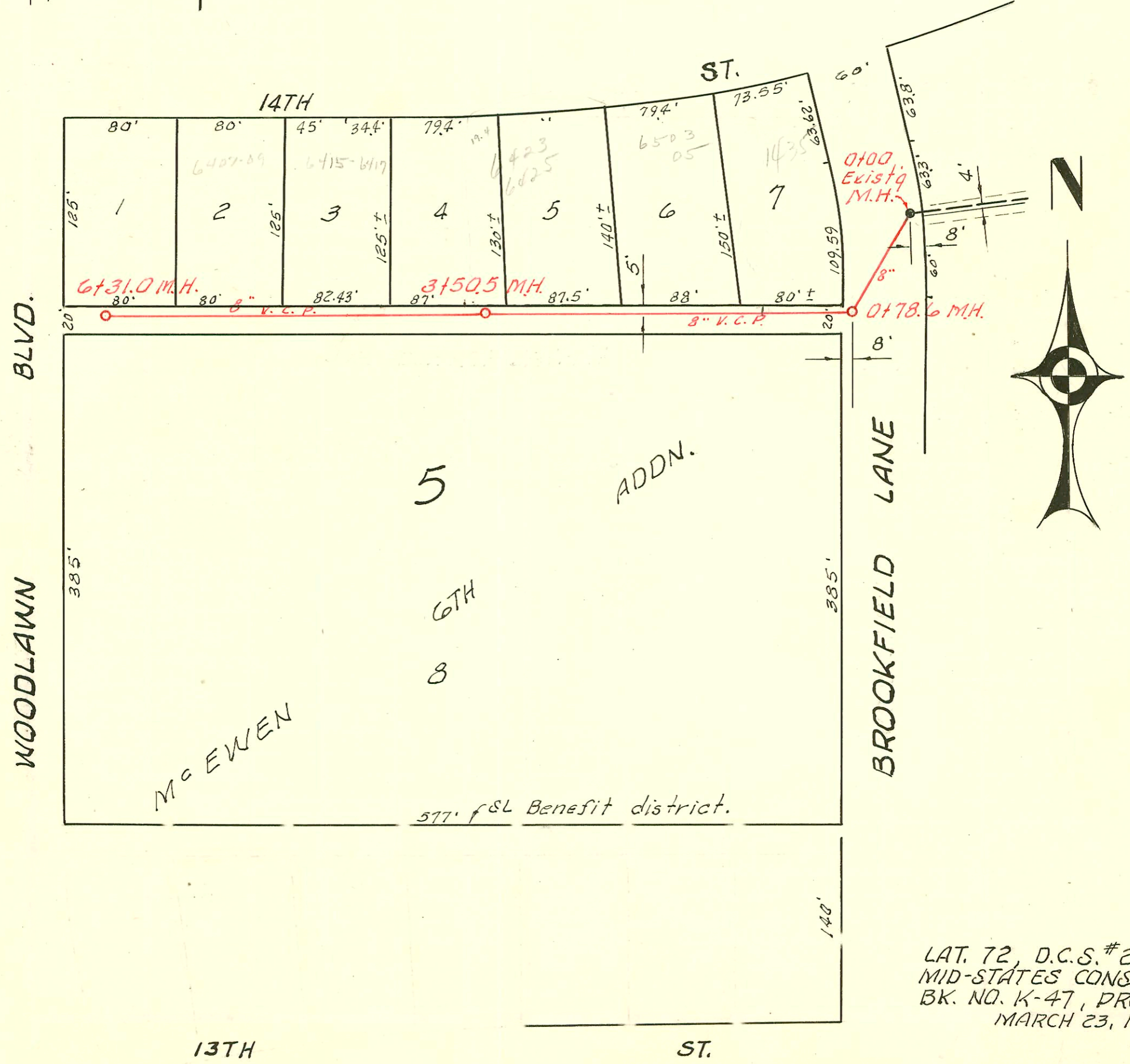


LATERAL 79 S.S. 22
 MID-STATES CONSTR. CO. NOV. 25 '60
 BK. NO. K-49 PROJ. NO. C20-49



LAT. 72, D.C.S. #2, S.S. #12
 MID-STATES CONST. CO. INC.
 BK. NO. K-47, PROJ. NO. C2934
 MARCH 23, 1961

