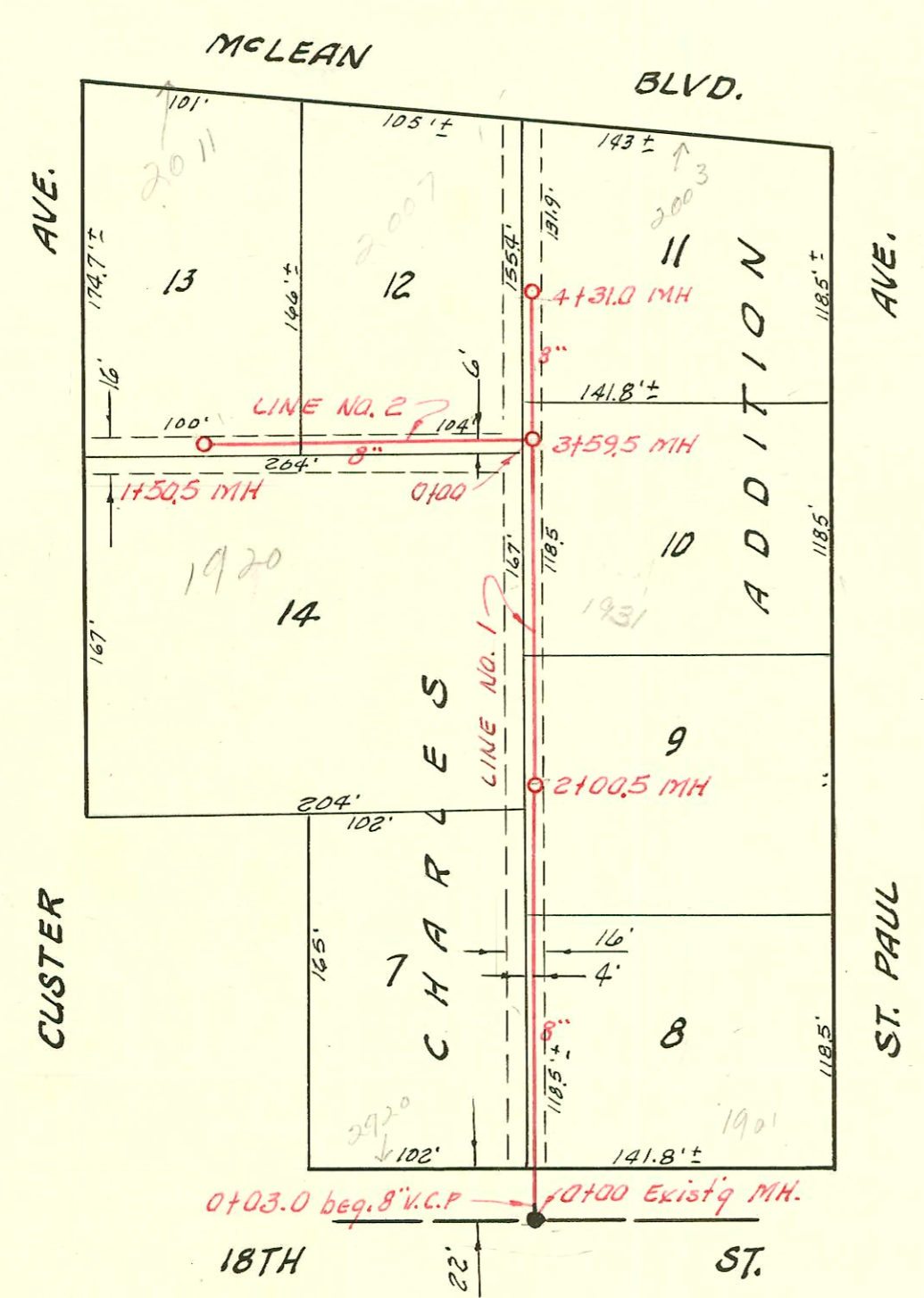
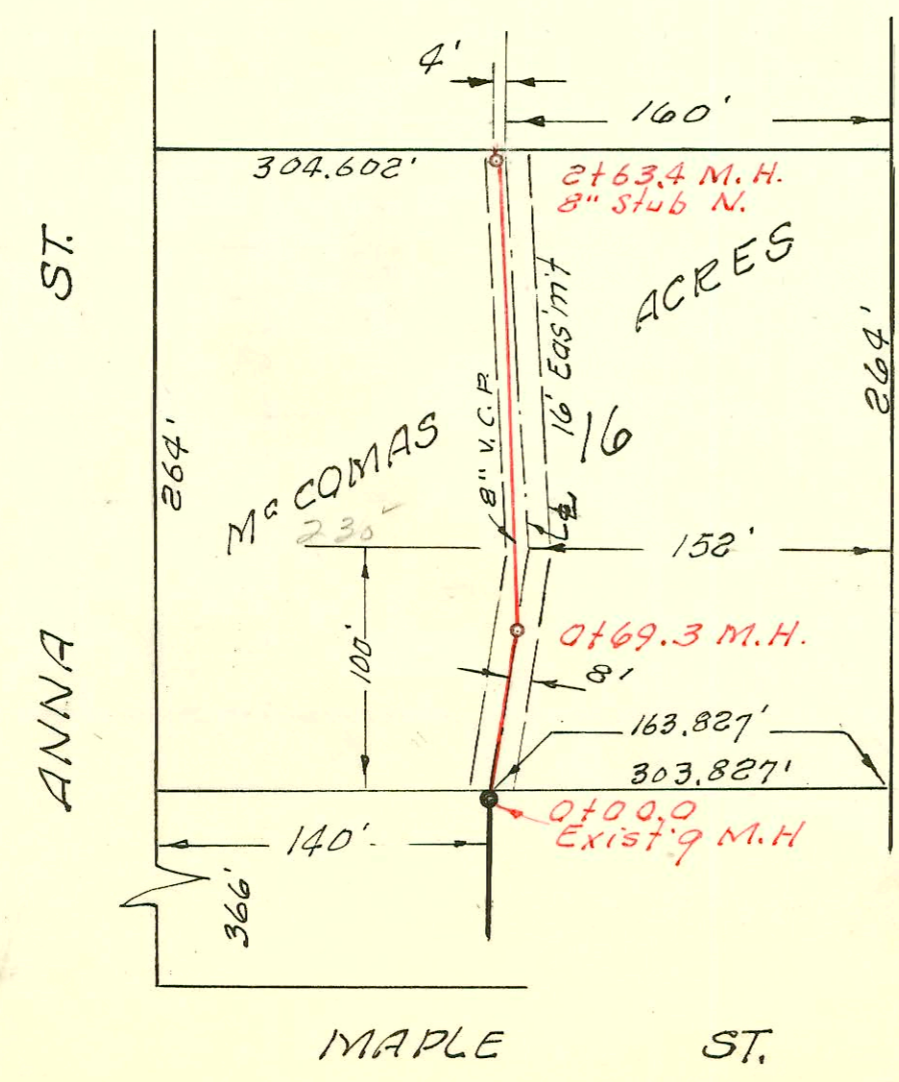


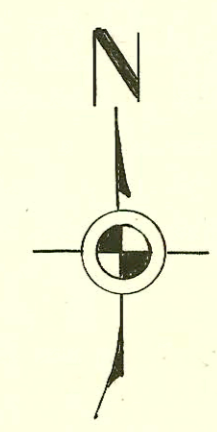
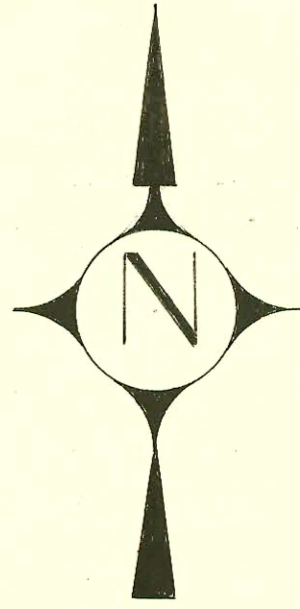
LAT. 130, SUB 5, S. S. NO. 22  
 W. B. CARTER CONT. JAN., 1960  
 BK. NO. K-49, PROJ. NO. C29-83



LAT. 26, SUB 10, S. S. 22  
 UTILITIES CONT. INC. JAN. 19, 1961  
 BK. # K-56, PROJ. NO. C20-54



LAT. 189, SUB. 4, S. S. NO. 22  
 W. B. CARTER CONST. CO. INC.  
 BK. K-80, PROJ. NO. C25-46  
 4-25-66



1" = 80'

CONSTRUCTION RECORD

SERVICE RECORD

STATION	ELEVATION		Depth	MANHOLE	4-INCH "Y" BRANCHES		No. of Permit		House Number		DATE OF PERMITS	
	Ground	Grade			North West	South East	North West	South East	North West	South East	North West	South East
0+00	129.8	116.20	13.6	0+00 Exist'g MH								
1+00	128.4	116.40	12.0		1+20.8	1+22.8	13756	13755	1300 Baker	1306 Baker	1-11-61	1-11-61
2+00	126.4	116.60	9.8									
	126.4	116.64 out	9.8	2+19.6								
	126.4	116.73 in	9.7	2+33.4								
	126.4	116.77 out	9.6									
	126.4	116.87 in	9.5									
3+00	126.4	117.00	9.6		2+76 <sup>20</sup>	2+78 <sup>2</sup>	24511	13765	4639 Whitehall	4636 W. 12th	12-22-89	1-13-61
					22.6' E of W PL		02968		4633 Whitehall	4630 W. 12th	3-27-81	
4+00	127.0	117.20	9.8		3+21 <sup>2</sup>	3+23 <sup>2</sup>		C 13318				3-28-69
					4+31.2		55708		4621 Whitehall	4621 W. 12th	6-2-76	
					4+68 <sup>2</sup>	4+70 <sup>6</sup>	53452		4621 Whitehall	4621 W. 12th	1-27-76	3-29-63
5+00	128.4	117.40	11.0		5+34 <sup>2</sup>	5+36 <sup>2</sup>	C12895	C28714	4615 Whitehall	4614 W. 12th	2-25-69	10-26-71
	128.6	117.56	11.0	5+80 <sup>7</sup>								
6+00	128.0	117.60	10.4		6+09 <sup>6</sup>	6+11 <sup>6</sup>	C7593		4609 Whitehall	4526 W. 12th	3-27-68	
					+66 <sup>6</sup>	+68 <sup>6</sup>	C53057	C6349	4603 Whitehall	4526 W. 12th	1-7-76	1-5-68
7+00	127.5	117.80	9.7		7+41 <sup>4</sup>	7+43 <sup>4</sup>		13821	4520 W. 12th			1-31-61
8+00	125.9	118.00	7.9		7+42.3		56636		4515 Whitehall	4514 W. 12th	7-12-70	
					8+04 <sup>9</sup>	8+06 <sup>9</sup>	C1636	B 4120	4502 Whitehall	4508 W. 12th	1-23-67	9-15-65
					+68 <sup>8</sup>	+70 <sup>8</sup>	5730	B 2450	4502 Whitehall	4508 W. 12th	2-23-66	12-7-64
9+00	125.1	118.20	6.9		9+17 <sup>0</sup>	9+19 <sup>0</sup>	B5833		4503 Whitehall		6-16-66	
	125.2	118.26	6.7	9+31 <sup>0</sup>								
0+00	126.9	118.70	8.2	0+00 = 2+33.4 Line #1	4" stub	SW	13754		1302 Baker		1-11-61	
	127.9	119.40	8.5	0+69 <sup>6</sup>								
0+00	124.3	115.51	8.8	Exist'g MH Beq. 8" V.C.P.	WEST	EAST						
0+03 <sup>0</sup>								B1842	1901 N. St. Paul			8-26-64
1+00	124.6	115.71	8.9		0+93 <sup>0</sup>		13977		2920 W. 18th		3-16-61	
2+00	124.5	115.91	8.6	2+00 <sup>5</sup>								
3+00	124.8	116.11 out	8.7									
	124.7	116.23 in	8.5									
	124.7	116.33 in	8.4	3+59 <sup>5</sup>				15016	1727 St. Paul			12-5-61
								15015	1727 St. Paul			12-5-61
								7446	1731 N. St. Paul			2-7-83
4+00	125.2	116.31	8.9									
	125.2	116.37	8.8	4+31 <sup>0</sup>				16104				7-6-62
0+00	125.0	116.34	8.7	0+00 = 3+59 <sup>5</sup> LINE #1	NORTH	SOUTH						
					0+37 <sup>0</sup>		16000		2007 Meredith St.	1920 N. Waterloo	8-9-62	
1+00	124.3	116.53	7.8		0+78 <sup>5</sup>		14079					4-17-61
	124.6	116.63	8.0	1+50 <sup>5</sup>			15785		2011 Meredith St.		6-18-62	
0+00	117.7	108.86	8.8	0+00 <sup>2</sup> Exist'g M.H.	0+24 <sup>2</sup>	0+22 <sup>2</sup>						
	117.6	109.07	8.5	0+69 <sup>3</sup>								
1+00	118.3	109.18	9.1									
2+00	120.9	109.46	11.4		1+60 <sup>2</sup>	1+62 <sup>2</sup>	85398		230 St. Anna		2-28-69	
	120.3	109.65	10.6	2+63 <sup>4</sup>	2+07 <sup>3</sup>	2+05 <sup>3</sup>						
					8" stub N.							

LAT. 130, SUB 5, S. S. NO. 22

LINE # 1

LINE # 1-A

LAT. 26, SUB 10, S. S. NO. 22

LINE # 1

LINE # 2

LAT. 189, SUB 5, S. S. NO. 22

Permit No # B5398  
230 St. Anna  
4-5-66  
Joe Spaulding