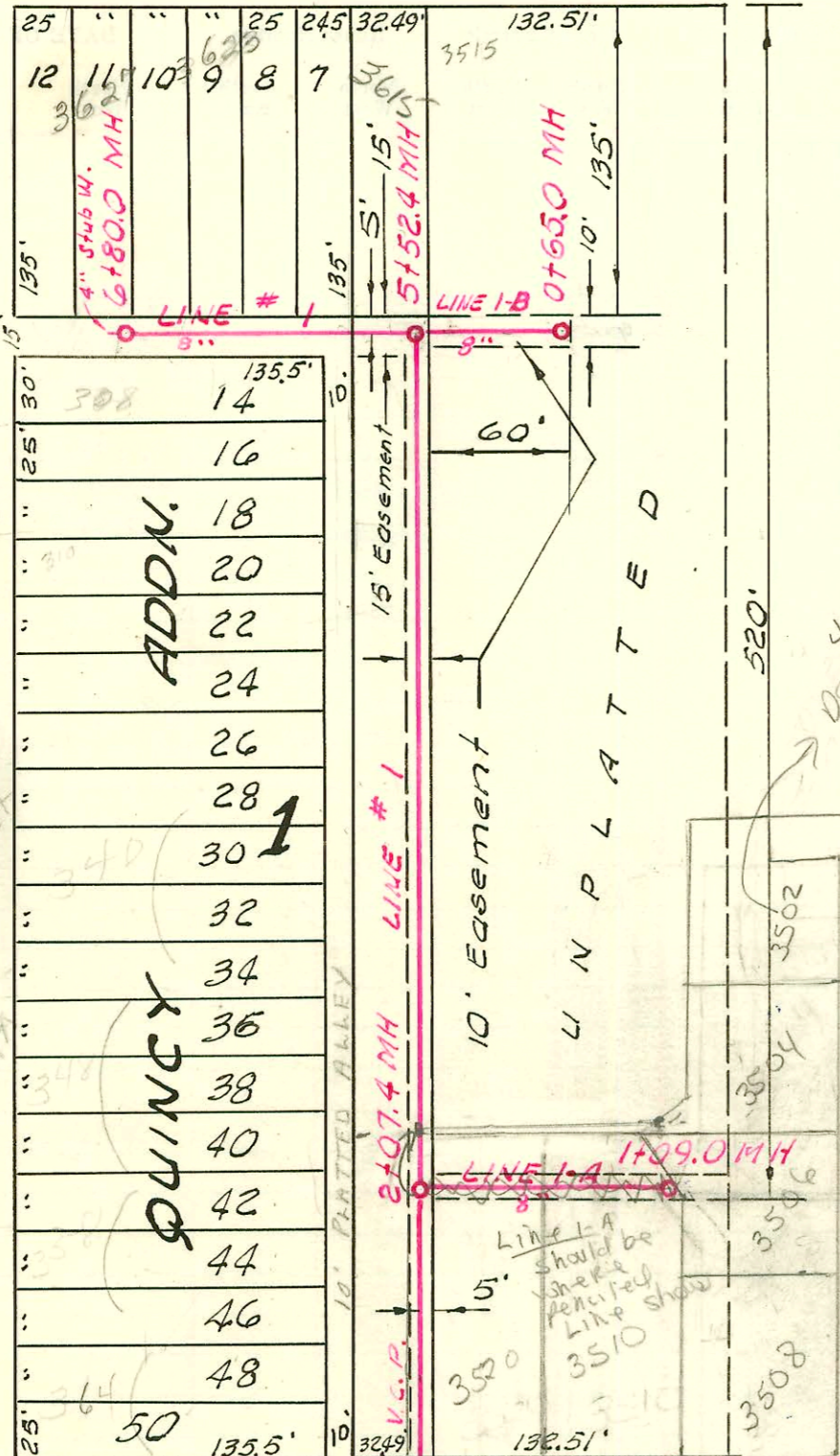


MAPLE ST.

KESSLER ST.

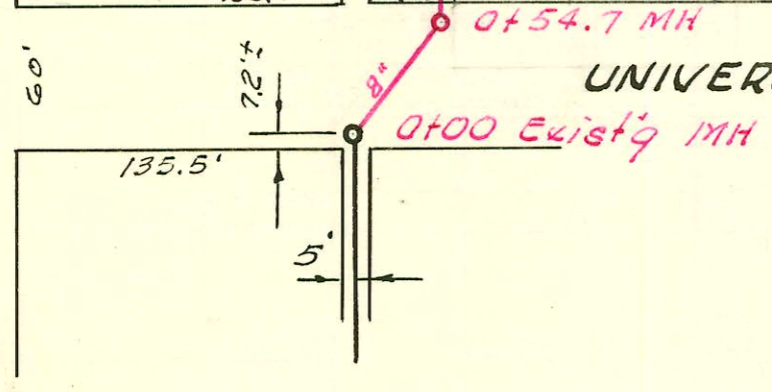


11/190  
 Note:  
 300 Block of  
 S Kessler  
 No private  
 face easement  
 Must have  
 an agreement  
 prior to  
 issuing  
 city sewer  
 permit

4-5-93  
 DO NOT ISSUE PERMIT  
 PER PLANNING DIV.  
 Main Ext. Required  
 Do Not  
 Issue Permit  
 in 300 Block  
 S Kessler  
 Note  
 7-27-77

LAT. 159, SUB. 5, SAN. SEWER 22  
 W. B. CARTER CONST. CO. INC., JUNE 1961  
 PROJ. NO. C21-3, BK. NO. K-58

UNIVERSITY AVE.



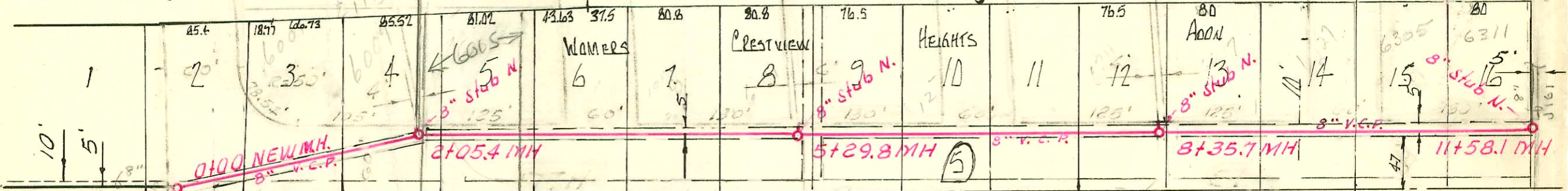
17TH ST. CHARLOTTE

FARMSTEAD

SIEFKIN

KIMBERLY

WOODLAWN BLVD.



#03299 top 6207 E. 17th Reynolds Alley 4-29-65 top (9+53.4)  
 Rec #65854 #2500 spec. lat. paid. Reynolds Alley 4-29-65  
 #01706 top 6105 E. 17th Reynolds Alley 7-28-64 top (3+94.4)  
 Rec #51024 #2500 spec. lat. paid. Reynolds Alley 7-28-64  
 #02466 top 6111 E. 17th Reynolds Alley 12-7-64 top (4+93.2)  
 Rec #55798 #2500 spec. lat. paid. Reynolds 12-7-64  
 #02777 top 6117 E. 17th Reynolds Alley 1-29-65 (5+55.8)  
 Rec #64752 #2500 spec. lat. paid. Reynolds 1-29-65  
 #02800 top 6127 E. 17th Reynolds Alley 2-3-65 (6+54.8)  
 Rec #64761 #2500 spec. lat. paid. Reynolds 2-3-65

#05148 top 6217 E. 17th Reynolds Alley 6-2-66 (top 8+88.8) SUBMAIN 14 SAN. SEWER 12  
 Rec #94253 #2500 spec. lat. paid. Reynolds Alley 6-2-66 W. B. CARTER CONST. CO. INC., JUNE 1961  
 BK. NO. K-51-A, PROJ. NO. C 21-2  
 #C726 top 6211 E. 17th Reynolds Alley 11-7-66 (7+87.2)  
 Rec #6132 #2500 spec. lat. paid. 11-7-66

CONSTRUCTION RECORD

SERVICE RECORD

LINE # 1

LINE # 1-A

LINE # 1-B

STATION	ELEVATION		Depth	MANHOLE	4-INCH "Y" BRANCHES		No. of Permit		House Number		DATE OF PERMITS	
	Ground	Grade			North West	South East	North West	South East	North West	South East	North West	South East
0+00	120.5 118.9	109.04 9.15 out 9.25 in	11.5 9.8 9.9	0+00 Existg MH 0+54 <sup>2</sup>								
1+00	117.1	109.34	7.8		0+85 <sup>4</sup> 1+28 <sup>9</sup> 1+76 <sup>8</sup>	0+83 <sup>4</sup> 0+83 <sup>4</sup> 1+26.9 1+74 <sup>8</sup>	B4561 C68069 B4560	3648 3520 358	3520 University	11-18-65 11-18-65	8-25-78	
2+00	115.9 115.4	109.54 9.56 out 9.66 in	6.4 5.8 5.9	2+07 <sup>4</sup>	2+30 <sup>0</sup> 2+78 <sup>5</sup>	2+28 <sup>0</sup> 2+76 <sup>5</sup>	B4557 B4558	348 310	Reseller	11-18-65 11-18-65		
3+00	116.4	109.74	6.7		3+26 <sup>0</sup> 3+74 <sup>0</sup>	3+24 <sup>0</sup> 3+72 <sup>0</sup>						
4+00	115.5	109.94	5.6		4+21 <sup>4</sup> 4+79 <sup>0</sup>	4+19 <sup>4</sup> 4+77 <sup>0</sup>	14339 14338	320 310	Reseller	6-22-61 6-22-61		
5+00	115.9 115.1	110.14 9.25 out 9.35 in	5.8 4.9 5.0	5+52 <sup>4</sup>	5+72 <sup>0</sup> 5+70 <sup>0</sup>		966	3615	Map	8-12-80		
6+00	115.8	110.44	5.4		6+57 <sup>8</sup> 6+74 <sup>7</sup>	6+55 <sup>8</sup>	14337 14335	3627 w/mag	3088 Reseller	6-22-61	6-22-61	
	117.1	110.60	6.5	6+80 <sup>0</sup>	4" stub N.							
0+00	116.4	109.66	6.7	0+00 = 2+07.4 in Line # 1	0+31 <sup>0</sup>	0+24 <sup>0</sup>						
1+00	118.4	109.86	8.5		1+03 <sup>6</sup>	1+01 <sup>6</sup>	C63068	3510	University		8-25-78	
	117.8	109.88	7.9	1+09 <sup>0</sup>	MH TAP NORTH MH TAP SE MH TAP E		23888	25254 25252	3504 UNIV CT	9-14-89	5-1-90 5-1-90	
0+00	115.5	110.34	5.2	0+00 = 5+52.4 Line # 1	0+06.8 <sup>2</sup> 0+08 <sup>2</sup> 0+58 <sup>8</sup>	0+10 <sup>2</sup> 0+60 <sup>8</sup>	C63525 #17326 #17363	3515 3533	UNIV (Det) UNIV (Gar)	11-18-65 7-28-77	6-22-61	
	116.5	110.46	6.0	0+65 <sup>2</sup>								
0+00	219.8	208.55	11.3	0+00 New MH								
1+00	220.1	208.75	11.4									
2+00	221.0 220.9	208.95 210.70 North 208.96	12.1 11.9	2+05.4	8" stub N.							
3+00	221.4	209.15	12.3									
4+00	222.6	209.35	13.3									
5+00	222.7 222.4	209.55 212.80 North 209.62	13.2 12.8	5+29.8	8" stub N.							
6+00	221.4	209.75	11.7									
7+00	219.1	209.95	9.2									
8+00	217.7 217.7	210.15 210.80 North 210.23	7.6 7.5	8+35.9	8" stub N.							
9+00	215.8	210.35	5.5									
10+00	214.2	210.55	3.7									
11+00	213.3 212.8	210.75 211.00 North 210.88	2.6 1.9	11+58.1	8" stub N.		C66929	631	1722	6-22-61		

C64222 - 6305 C 1726 - 12-7-77 (10+70.1)  
 B4569 - 6305 C 1726 - 12-7-77 - #372277  
 B4569 - 6305 C 1726 Reynolds Pllg 11-18-65 - top (7+29.8) spec for 25<sup>th</sup> St. Rd. 8170<sup>2</sup>  
 #14336 - 3623 W Maple - 6-22-61 - City of - top 6+20.4  
 #16926 - 4063 E 17th - 4-9-63 - Reynolds Pllg - top (0+53) spec for Res #21296 #25<sup>th</sup>  
 #17277 top - 6009 E 17th - 6-18-63 - Reynolds Pllg - top (1+64.4)  
 #2502 spec for Res #26067 - Reynolds Pllg 6009 E 17th - 6-18-63  
 #17498 top - 6015 E 17th - 9-9-63 - Reynolds Pllg - top (2+40.5)  
 #2502 spec for Res #29513 - Reynolds Pllg 6015 E 17th - 9-9-63  
 #61551 top - 6015 E 17th - 6-23-64 - Reynolds Pllg - top (3+40.4)  
 #2502 spec for Res #41905 - 6015 E 17th Reynolds Pllg - 6-23-64