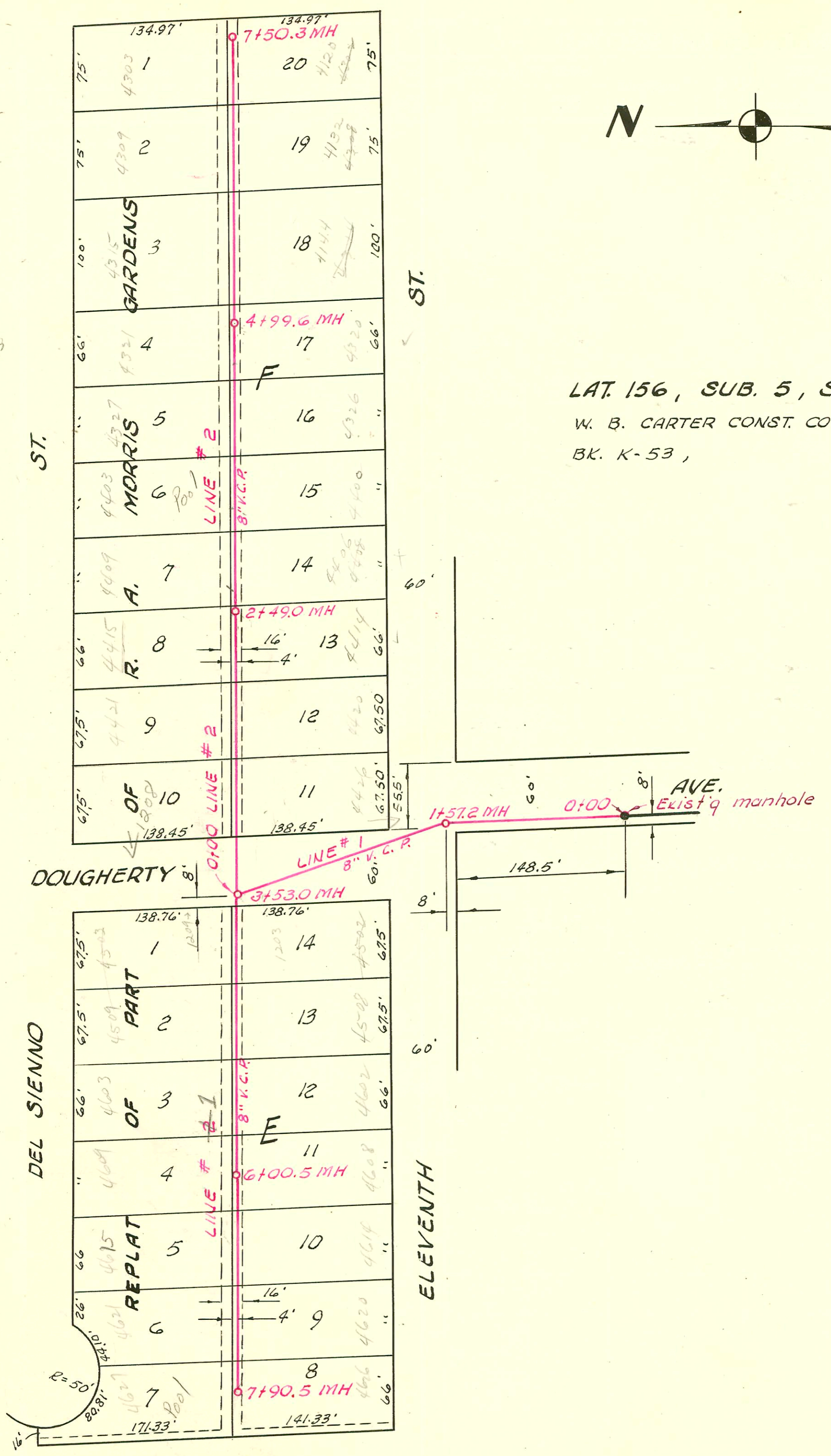


LAT. 156, SUB. 5, SAN. SEWER 22  
W. B. CARTER CONST. CO. INC., JUNE 1961  
BK. K-53, PROJ. NO. C20-47



BK. K-53

1"=80'

DEL SIENNO

ELEVENTH

DOUGHERTY

ST.

ST.

MORRIS GARDENS

MORRIS

A.

R.

OF

10

PART

OF

REPLAT

6

7

8

LINE #2

LINE #2

LINE #1

LINE #1

LINE #1

8" V.C.P.

8" V.C.P.

8" V.C.P.

8" V.C.P.

8" V.C.P.

4+99.6 MH

2+49.0 MH

3+53.0 MH

6+00.5 MH

7+90.5 MH

7+50.3 MH

AVE.

Existing manhole

R=50'

80.81'

101.37'

101.37'

16'

171.33'

171.33'

138.45'

138.45'

67.5'

67.5'

67.5'

66'

66'

66'

66'

66'

26'

66'

66'

66'

66'

66'

66'

66'

66'

66'

66'

138.76'

138.76'

138.76'

138.76'

138.76'

138.76'

138.76'

138.76'

138.76'

138.76'

138.76'

138.76'

138.76'

138.76'

138.76'

138.76'

138.76'

138.76'

138.76'

67.5'

67.5'

67.5'

66'

66'

66'

66'

66'

66'

66'

66'

66'

66'

66'

66'

66'

66'

66'

66'

138.76'

138.76'

138.76'

138.76'

138.76'

138.76'

138.76'

138.76'

138.76'

138.76'

138.76'

138.76'

138.76'

138.76'

138.76'

138.76'

138.76'

138.76'

138.76'

67.5'

67.5'

67.5'

66'

66'

66'

66'

66'

66'

66'

66'

66'

66'

66'

66'

66'

66'

66'

66'

138.76'

138.76'

138.76'

138.76'

138.76'

138.76'

138.76'

138.76'

138.76'

138.76'

138.76'

138.76'

138.76'

138.76'

138.76'

138.76'

138.76'

138.76'

138.76'

67.5'

67.5'

67.5'

66'

66'

66'

66'

66'

66'

66'

66'

66'

66'

66'

66'

66'

66'

66'

66'

138.76'

138.76'

138.76'

138.76'

138.76'

138.76'

138.76'

138.76'

138.76'

138.76'

138.76'

138.76'

138.76'

138.76'

138.76'

138.76'

138.76'

138.76'

138.76'

67.5'

67.5'

67.5'

66'

66'

66'

66'

66'

66'

66'

66'

66'

66'

66'

66'

66'

66'

66'

66'

138.76'

138.76'

138.76'

138.76'

138.76'

138.76'

138.76'

138.76'

138.76'

138.76'

138.76'

138.76'

138.76'

138.76'

138.76'

138.76'

138.76'

138.76'

138.76'

67.5'

67.5'

67.5'

66'

66'

66'

66'

66'

66'

66'

66'

66'

66'

66'

66'

66'

66'

66'

66'

138.76'

138.76'

138.76'

138.76'

138.76'

138.76'

138.76'

138.76'

138.76'

138.76'

138.76'

138.76'

138.76'

138.76'

138.76'

138.76'

138.76'

138.76'

138.76'

67.5'

67.5'

67.5'

66'

66'

66'

66'

66'

66'

66'

66'

66'

66'

CONSTRUCTION RECORD

SERVICE RECORD

STATION	ELEVATION		Depth	MANHOLE	4-INCH "Y" BRANCHES		No. of Permit		House Number		DATE OF PERMITS	
	Ground	Grade			North West	South East	North West	South East	North West	South East	North West	South East
LINE #1	0+00	124.7	117.10	7.6	0+00							
	1+00	124.8	117.30	7.5	EXIST'G MH							
		125.2	117.41	7.8	1+57 <sup>2</sup>							
	2+00	125.2	117.50	7.7								
	3+00	125.4	117.70	7.7								
		125.9	117.80	8.1	3+53 <sup>0</sup>							
	4+00	124.9	118.00	6.9	3+74 <sup>6</sup>	3+76 <sup>6</sup>	94-87-7	1207	1237 N. R.			1-3-94
					4+07 <sup>8</sup>	4+15 <sup>6</sup>	C5310	C4535	1207	1237 N. R.		8-21-67
					4+43 <sup>0</sup>	4+45 <sup>0</sup>	C7589	C2015	1207	1237 N. R.		3-27-68
	5+00	125.0	118.20	6.8								
					5+11 <sup>3</sup>	5+13 <sup>3</sup>	C15161	C7973	4603	4602		7-29-69
					5+73 <sup>8</sup>	5+75 <sup>8</sup>	C14297	C35631	4609	4608		6-3-69
	6+00	125.3	118.40	6.9	6+00 <sup>5</sup>							
					6+44 <sup>7</sup>	6+46 <sup>7</sup>	C25629	C12890	4615	4614 W		6-25-71
	7+00	125.2	118.60	6.6								
					7+07 <sup>8</sup>	7+09 <sup>8</sup>	C54029	C23774	4621	4620 W		3-4-76
					7+75 <sup>7</sup>	7+77 <sup>7</sup>	C34013	C11485	4627	4626 W		8-1-72
		125.4	118.78	6.6	7+90 <sup>5</sup>							
LINE #2	0+00	125.9	117.91	8.0	0+00 = 3+53 <sup>0</sup>							
					Line #1							
	1+00	125.9	118.10	7.8	0+68 <sup>3</sup>	0+70 <sup>3</sup>	C5042	B5113	1208	4422 W		9/28/67
	2+00	126.4	118.30	8.1	1+36 <sup>5</sup>	1+38 <sup>5</sup>	C19811	B3029	4421	4422		6-24-70
		126.6	118.40	8.2	2+03 <sup>9</sup>	2+05 <sup>9</sup>	B5969	15513	4415	4414		6-8-66
					2+49.0							
					2+67 <sup>6</sup>	2+69 <sup>6</sup>	C9916	B1610	4409	4408		8-2-68
	3+00	126.6	118.50	8.1								
					3+30 <sup>5</sup>	3+32 <sup>5</sup>	C17020		4408			11-21-69
					3+98 <sup>0</sup>		C37365		4327			2-22-73
	4+00	125.0	118.70	6.3	4+66 <sup>0</sup>	4+68 <sup>0</sup>	2001-00574	B71	4321	4320		3-15-01
		124.2	118.90	5.3	4+99 <sup>6</sup>							
					5+26 <sup>0</sup>	5+24 <sup>0</sup>						
						5+68 <sup>0</sup>	#12339		4124			June 1, 1961
	6+00	124.0	119.10	4.9								
					6+28 <sup>4</sup>							
					6+76.3 <sup>4</sup>	6+61 <sup>0</sup>	15173	#14233	4303	4132		3-17-86
	7+00	124.0	119.30	4.7								
					7+06 <sup>5</sup>							
		124.4	119.41	5.0	7+50 <sup>3</sup>							

2001-00574 3/15/01 4321 Del Sienna - Padgett Exc - 4" SCH 40 33.9' W of MH 4+99 (4+66) Claytile 4" - 17" W. CO, 2V22, 2H45

# B3723 - 4466 W. 11th - Langer (225) 7-1-65 - lay (3+77.5)