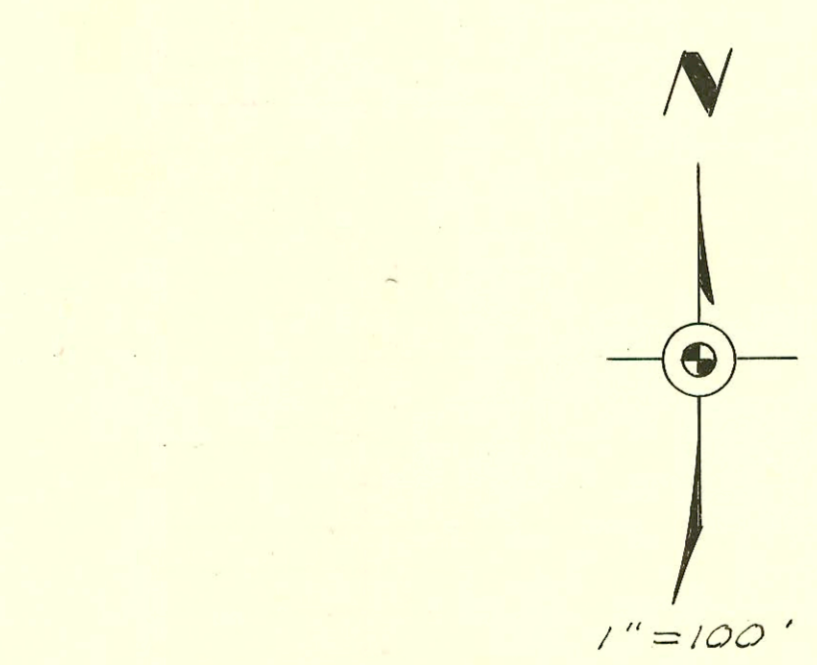
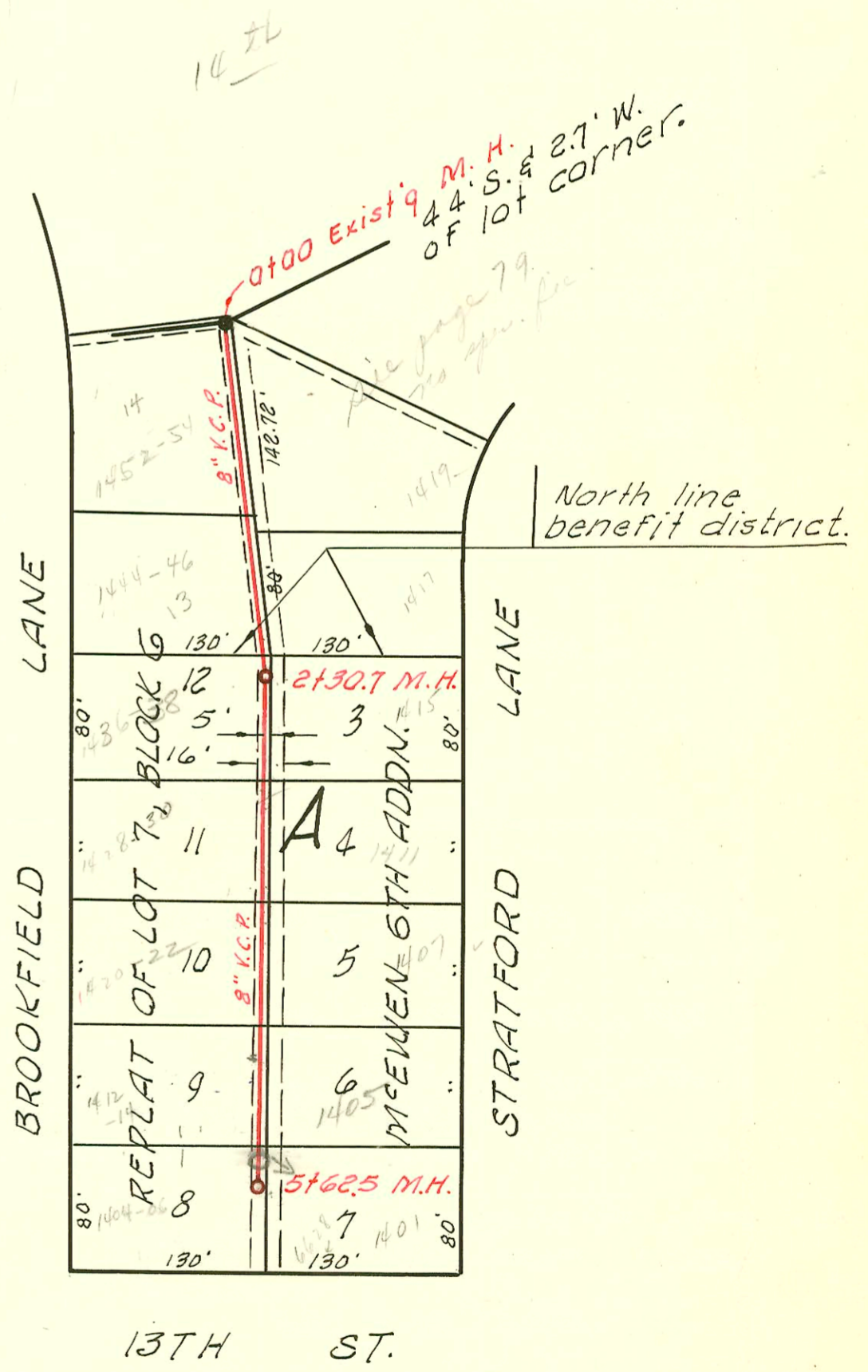


LAT. 151, SUB. 5, SAN. SEWER 22  
 W. B. CARTER CONST. CO. INC., JULY 1961  
 BK. NO. K-57 PROJ. NO. C20-31  
 7-28-61



LAT. 81, D. C. S. NO. 2 SAN. SEWER NO. 12  
 W. B. CARTER CO. INC. JAN. 1962  
 BK. K-47 PROJ. NO. C21-11  
 1-19-62



13TH ST.

CONSTRUCTION RECORD

SERVICE RECORD

STATION	ELEVATION		Depth	MANHOLE	4-INCH "Y" BRANCHES		No. of Permit		House Number		DATE OF PERMITS	
	Ground	Grade			North West	South East	North West	South East	North West	South East	North West	South East
0+00	126.3	117.00	9.3	0+00 Exist'g MH.								
1+00	126.3	118.00	8.3		0+73°	0+60 <sup>2</sup>						
						0+99 <sup>3</sup>	B3662		1205 Baker			6-25-65
2+00	127.2	119.00	8.2		1+30°	1+38 <sup>4</sup>			1207 Baker			8-10-61
					1+94 <sup>5</sup>	1+96 <sup>5</sup>	C56509	14550	1226 Anna	1225 Baker	7-24-75	8-10-61
3+00	128.0	120.00	8.0	3+00°	2+71 <sup>4</sup>	2+70 <sup>4</sup>	C7344	C69114	1228 Anna	1231 Baker	8-7-79	3-2-78
4+00	129.4	121.00	8.4		3+23°	3+72 <sup>5</sup>	C75228	94-87-17	1230 Anna	1232 Anna	11-6-79	5-7-63
					3+70 <sup>5</sup>	4+29 <sup>5</sup>	58040	17066	1237 Anna	1237 Baker	10-6-76	5-7-63
5+00	130.6	122.00	8.6		4+29 <sup>5</sup>	4+46°	58039		1240 Anna	1245 Baker	10-6-76	8-12-77
					4+97 <sup>3</sup>	5+50 <sup>6</sup>	58038	C62646	1248 Anna		10-6-76	
6+00	131.8	123.00	8.8	5+99'	5+61°		C56558		1300 Anna		7-2-76	
	131.8	123.00	8.8		6+17°	6+19°	C56539		1306 Anna		7-2-76	
6+84 <sup>3</sup>	130.6	123.34	7.3		End 8" V.C.P. 15' N. of H.							

LAT. 81, D.C.S. NO. 2, S. S. NO. 12

0+00	195.3	187.50	7.8	0+00 Exist'g MH.	0+15°	0+13°			1452-54 Brimfield		12-3-76	
					0+73°	0+85°	C58955	15993	1419 Stratford			8-8-62
1+00	196.3	187.90	8.4		1+46°	1+59°		16276	1417 Stratford			10-22-62
					1+91°	2+03'	C58954		1444-46 Brimfield		12-3-76	
2+00	196.9	188.30	8.6		2+46°	2+44°	C58953	17057	1436-38 Brimfield	1415 Stratford	12-3-76	5-6-63
	197.0	188.42 out 188.62 in	8.6	2+30°	2+82°	2+80°						
3+00	196.7	188.90	7.8		3+21°	3+19°			1428-30 Brimfield	1411 Stratford	5-24-75	3-26-62
					3+60°	3+58°	C55584	15344	1439-27 Brimfield		5-24-76	
4+00	196.7	189.30	7.4		4+05°	4+03°	C55586	15556	1407 Brimfield			4-27-62
					4+43°	4+41°						
					4+78°	4+66°		15115	1405 Stratford			1-29-62
5+00	196.2	189.70	6.5	Top	5+44.5°	5+14°	94-6507 C49871		1412-146 Brimfield		6-11-75	
					5+55°	5+53°	C50381	15702	1404-00 Brimfield	1404 Stratford	7-7-78	6-1-62
	195.5	189.94	5.6	5+62°								

# C5299 Top-1415 Stratford - Bowen Ditch - 3-22-66 (Brimfield) 2+48.7

Sept 2003-00262 1-27-2003 1237 N Baker - Morris Ditch =