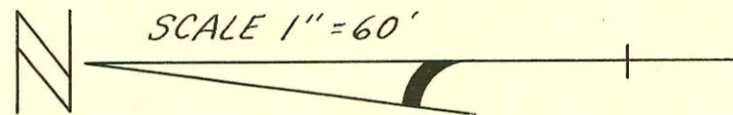


LAT. 39, SUB. 2, S. S. NO. 22

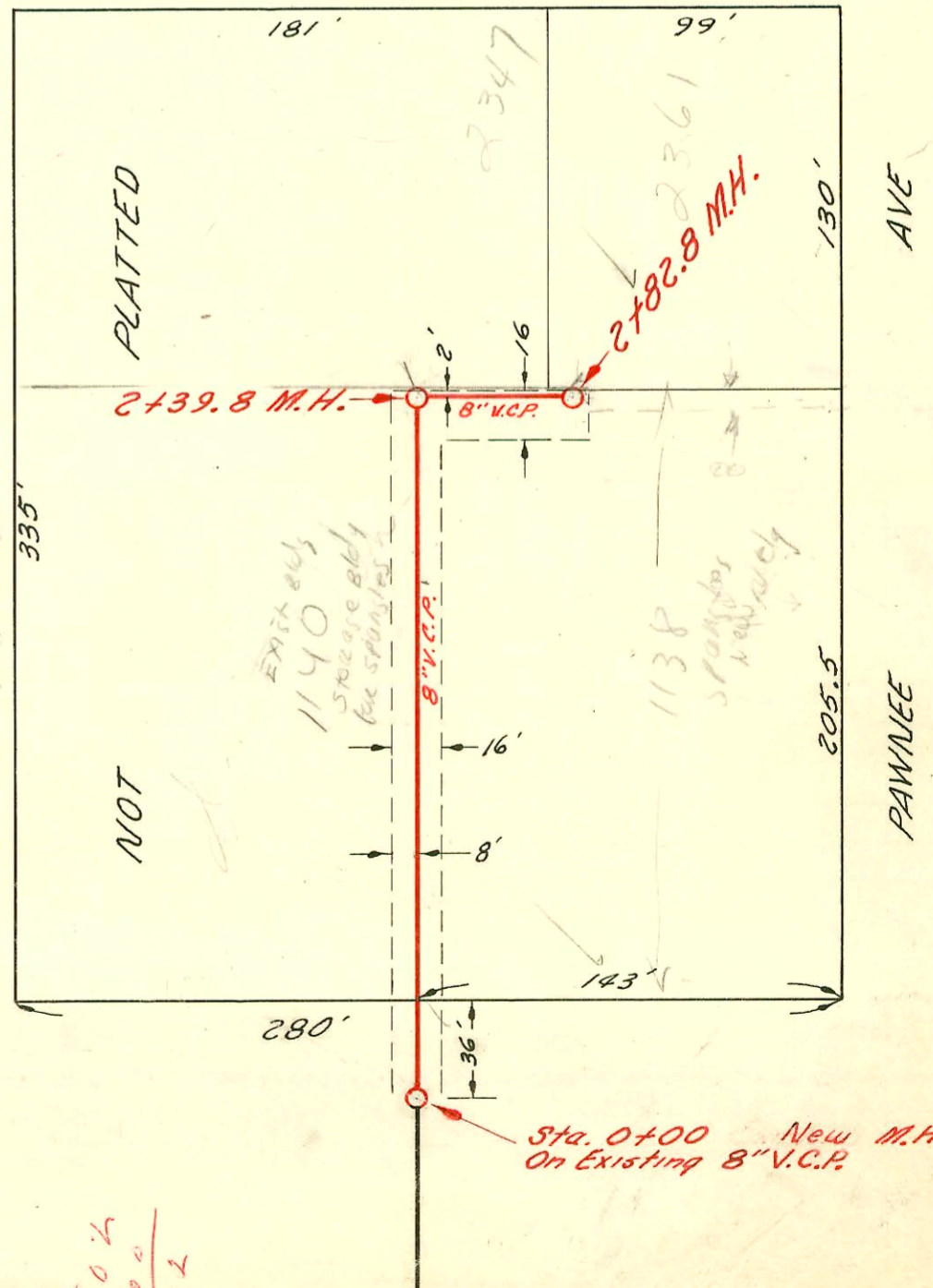
W. B. CARTER CONST. CO. INC. AUG. 1961
PROJ. NO. C20-50, BK. NO. K-61
Aug. 9, 1961

RELOC. OF PART OF LAT. 39, SUB. 2, S. S. 22
Mid-States Const. Co. Inc. 5-15-68
PRIVATE CONTRACT, J.K.#1, BOOKED 8-26-68



LAT 41, SUB. 2 SS. 22
MID-STATES CONST. CO. INC. MARCH 12, 1962
BOOK NO. K-64A PROJ. NO. C21-33

SENECA ST.



Sta. 0+00 New M.H.
On Existing 8" V.C.P.

504
300
204

Refer to H-192

PAWNEE AVE.

NOT

ACCES

HAYCRAFT

PLATTED

NOT

PAWNEE AVE

PAWNEE

Westway Development
Replat
Reports 805

