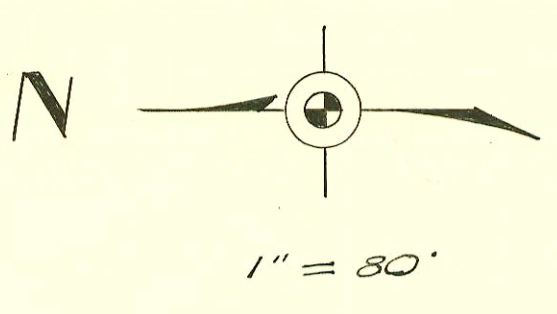
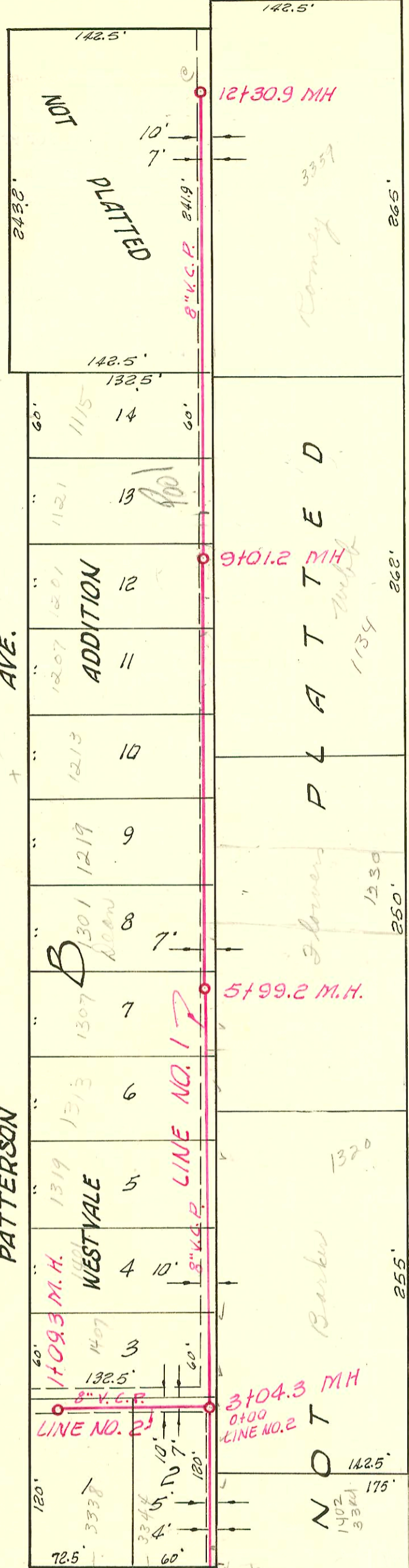


171 A



SENECA ST.

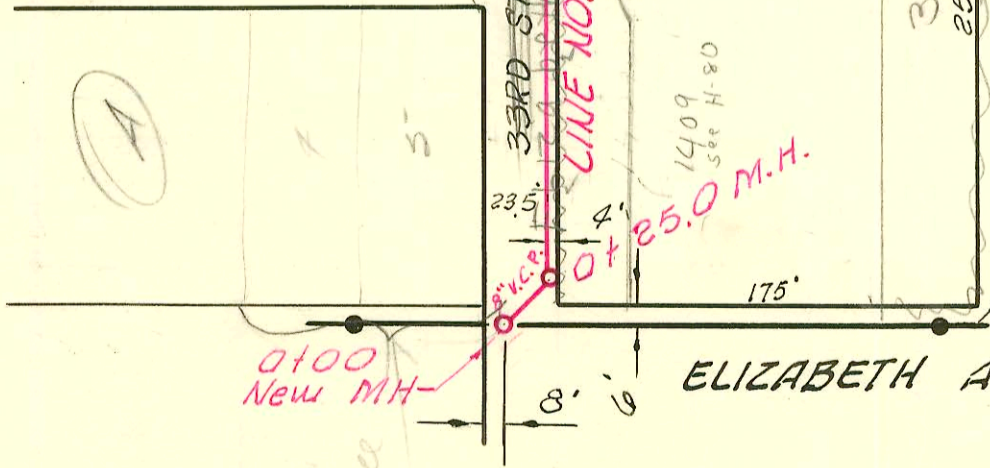


33RD ST. 80. ST. 33RD

02.8-1.74

LAT. 25, SUB. 2, S. S. NO. 22
MID-STATES CONST. CO. INC., DEC. 1961
BOOK NO. K-49, PROJ. NO. C26-11

ELIZABETH AVE.



Spring
located for
1100.07
per plat

CONSTRUCTION RECORD

SERVICE RECORD

STATION	ELEVATION		Depth	MANHOLE	4-INCH "Y" BRANCHES		No. of Permit		House Number		DATE OF PERMITS	
	Ground	Grade			North West	South East	North West	South East	North West	South East	North West	South East
0+00	93.4	86.00	7.4	0+00°								
	93.9	86.08 out 86.18 in	7.7 7.8	0+25°								
1+00	93.7	86.40	7.3			0+53 ²						
2+00	93.2	86.70	6.5			1+25 ³	#15007		1402 W. 33rd St. So.		Dec. 4, 1961	
						2+02 ³ 2+23 ⁷	15007	1407 W. 33rd St. So.		12-7-61		
3+00	93.4 93.4	87.01 out 87.11 in	6.4 6.3	3+04 ³		2+45 ⁵						
						2+73 ³						
4+00	93.8	87.30	6.5			3+27°	C18009		1407 Patterson		2-17-70	
						3+80°	C18008		1401 Patterson		2-17-70	
5+00	93.8	87.60	6.2			4+42°	C18007		1319 Patterson	1320 W. 33rd St. So.	2-17-70	12-6-61
						4+64°	15019					
6+00	93.6	87.90	7.7	5+99°		5+01°	C19026		1313 Patterson		4-29-70	
						5+62°	C19905	1302 W Patterson	1302 33rd St. So.	7-1-70	1-17-68	
7+00	94.3	88.20	6.1			6+22°	C18529		1301 Patterson	1300 W 33rd St. So.	3-26-70	12-14-79
						6+81°	C17530		1219 Patterson		3-26-70	
8+00	93.8	88.50	5.3			6+93°	C19028		1220 W. 33rd St. So.		4-29-70	
						7+45°	C19637		1213 Patterson	1210 W 33rd St. So.	6-9-70	4-6-78
9+00	94.2	88.80	5.4	9+01°		7+82°	C65762					
						8+05°	C19704		1207 W Patterson		7-1-70	
10+00	94.3	89.10	5.2			8+63°	C19636		1201 Patterson		6-9-70	11-13-62
						8+36°	16353					
11+00	94.5	89.40	5.1			9+25°	C75376		1121 W Patterson		4-15-71	
						9+83°	C19027		1115 Patterson		4-29-70	
12+00	93.8	89.70	4.1			10+43°						
						10+41° 10+94°						
12+00	94.5	89.79	4.7	12+30°		11+11° 11+43°						
						12+00° 12+02°						
0+00	93.4	87.14	6.3	0+00 = 3+04 ³ Line No. 1		12+04°	C54218		3359 E. Denver		3-12-76	
						0+18°						
1+00	93.8 93.7	87.61 87.66	6.2 6.0	1+09°		0+20°	C18011		3344 So. Elizabeth		2-17-70	
						0+76°	C18010		3338 So. Elizabeth		2-17-70	

Line #1

Line #2

171