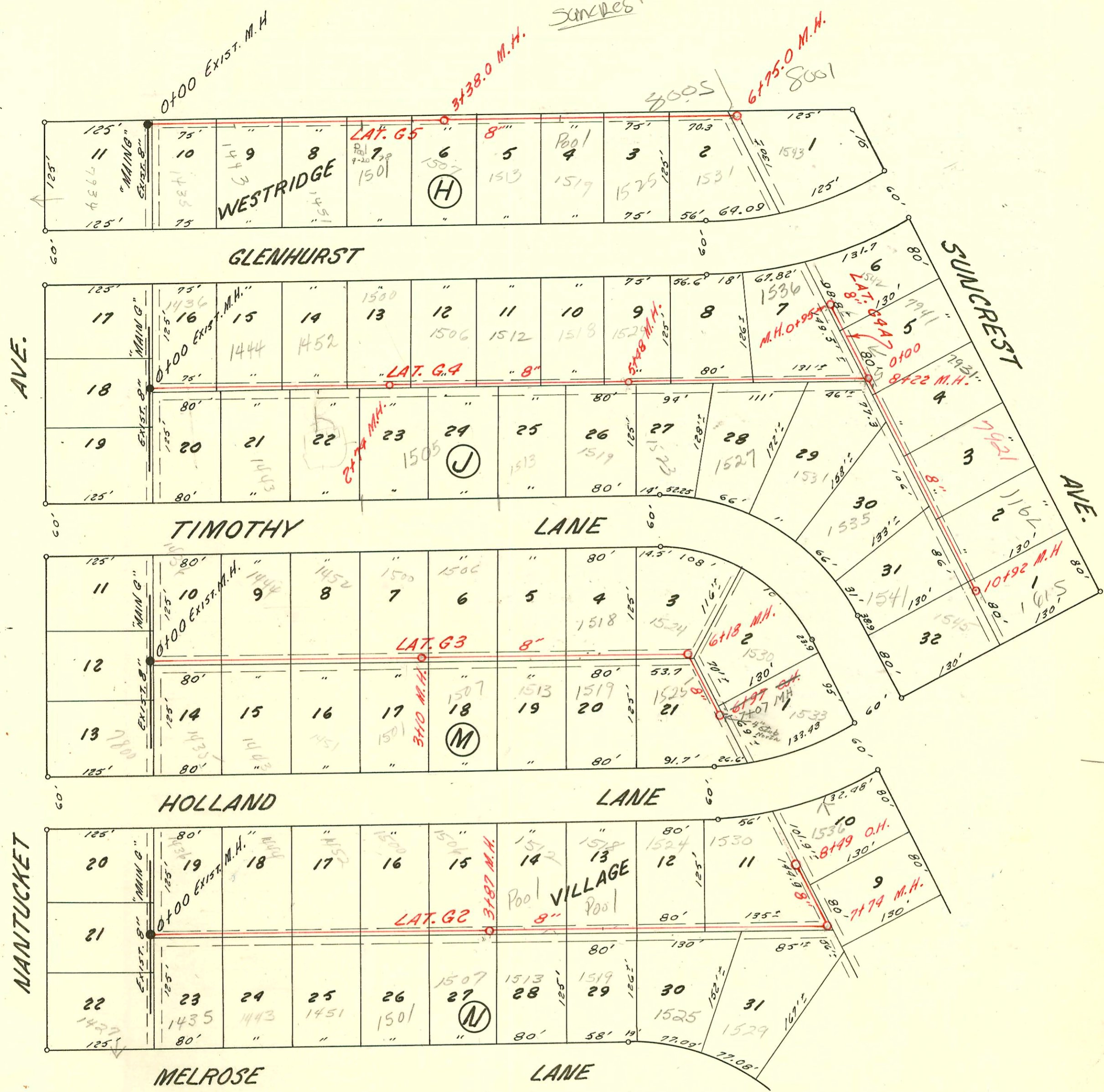


Surveys



LAT. 2, 3, 4, 4A, AND 5  
WESTRIDGE VILLAGE

COUNTRY ACRES IMPROVEMENT DISTRICT  
FLOYD B. DEVLIN ENGR. - UTILITY, CONTRACTOR

CONSTRUCTION DATE 1956 - BOOKED 4-11-1962

2003-01410 512703 1500 N Timothy Ln Redde Rootr - 4" Sch 40 PVC - Itwin 40

J178

CONSTRUCTION RECORD						SERVICE RECORD						
STATION	ELEVATION		Depth	MANHOLE	4-INCH "Y" BRANCHES		No. of Permit		House Number		DATE OF PERMITS	
	Ground	Grade			North West	South East	North West	South East	North West	South East	North West	South East
0+00	43.0	36.30	6.7	EXISTING 0+00	LAT G5		24232		1445 R		11-19-74	
1+00	43.6	36.70	6.9		1+78		247427		1451		11-19-74	
2+00	44.2	37.10	7.1		2+46		245801		1507		7-17-74	
3+00	44.8	37.50	7.3		3+20.0		241370		1513		9-21-73	
	45.0	37.65	7.3	3+38.0	4+06		243494		1517		2-14-74	
4+00	45.2	37.90	7.3		4+70.4		244501		1525		4-17-74	
5+00	45.7	38.30	7.4		5+42.7		240269		1531		7-25-73	
6+00	46.0	38.70	7.3		6+34.2		242092		1543	11505	11-6-73	
	46.2	39.00	7.2	6+75.0	END LAT G5		243304		1543		2-1-74	
					M.H. Tap							
0+00	43.1	35.06	8.0	EXISTING 0+00	LAT G4		24621		1449		9-30-75	
1+00	43.8	35.46	8.3		1+02.8		240216	241309	1444	1443	7-24-73	4-4-69
2+00	44.4	35.86	8.5		1+70.8		240217	241310	1452	1451	7-24-73	4-4-69
	44.8	36.16	8.6	2+74.0	2+52.5		249194	240215	1509	1505	4-23-75	7-24-73
3+00	44.9	36.26	8.6		3+25		242755		1506		12-14-73	
4+00	45.0	36.66	8.3		4+16		243302	238526	1512	1513	2-1-74	4-26-73
5+00	45.0	37.06	7.9		4+85		244847	237654	1518	1517	5-13-74	3-12-73
	45.0	37.26	7.7	5+98.0	5+71		241406		1524		9/25/73	
6+00	44.9	37.46	7.4		6+30			237655	1530	1523	3-12-73	
7+00	44.8	37.86	6.9		6+90.1		242589	239432	1530	1531	12-5-73	6-8-73
8+00	44.6	38.26	6.3		8+15		239430	241237	1530	1531	6-8-73	9-14-73
	44.6	38.36	6.2	8+22.0	8+28.5		276030		1544		1-8-80	
	44.6	38.46	6.1		9+41.2		1383	247719	1541	1535	9-30-80	12-10-74
9+00	44.3	38.76	5.5		10+38.0		1104	240270	1541	1541	8-28-80	7-25-73
10+00	43.8	39.16	4.6		10+70.4		923	234022	1545	1545	8-4-80	8-1-72
	43.2	39.54	3.7	10+92.0	END LAT G4							
0+00	44.6	38.96	6.1	EXISTING 0+00	LAT G4A							
	45.0	38.84	6.1	0+95	END LAT G4A		245950		1542		7/29/74	
					Wye 0+83.0							
0+00	43.1	33.82	9.3	EXISTING 0+00	LAT G3			7713	1443 R		3-16-83	
1+00	44.0	34.22	9.8		1+03.8				1444			
2+00	44.4	34.62	9.8		0+98		241189		1452		12-9-68	
3+00	44.8	35.02	9.8		1+27		241189	241817	1452	1451	12-9-68	10/23/73
	44.8	35.06	9.7	3+10.0	2+65		242397		1501		5-27-68	
4+00	45.0	35.42	9.6		3+51		242495		1507		4-12-73	6-17-71
5+00	45.0	35.82	9.2		5+10.9		235498	230277	1518	1513	10-19-72	2-2-72
6+00	45.0	36.22	8.8		5+82		234021	239431	1524	1523	8-1-72	6-8-73
	45.0	36.29	8.7	6+18.0	6+80		235137	231485	1530	1530	10-2-72	4-11-72
	44.5	36.72	7.8	6+97.0	O.H. END LAT G3							
			8.5	7+07	M.H. Built by Suez Maint 9-11-72		241189		1533		8-1-72	
0+00	42.0	32.75	9.2	EXISTING 0+00	LAT G2							
1+00	43.6	33.15	10.4		1+97		242365	244763	1452	1435	4/2/71	7-16-74
2+00	44.2	33.55	10.6		1+17		24913		1443		12-13-74	
3+00	44.6	33.95	10.6		2+81		242396	246293	1500	1501	12-29-70	8-21-74
	44.9	34.30	10.6	3+87.0	3+71		242574	242217	1506	1507	3-30-71	4-24-75
4+00	44.9	34.35	10.5		4+29		236778	249185	1512	1513	3-14-72	4-23-75
5+00	45.9	34.75	11.1		5+17		233369	249193	1518	1519	7-5-72	4-23-75
6+00	45.5	35.15	10.3		6+74		235136	247950	1530	1535	10-2-72	1-2-75
7+00	44.8	35.55	9.2		7+74.0		248860		1529		4-1-75	
	44.5	35.85	8.7									
	44.5	35.95	8.6	8+16			241193		1536		10-8-69	
8+00	44.4	36.05	8.3	8+49	O.H. END LAT G2							
	44.4	36.25	8.1									
N/C	2256	7931			Suncrest 1-2-81							
					fin Birges (9+14.0 top)							

238095 - 4-5-73 - 1512 Simethy - Dan Bennett - tap (4H3)  
 239584 - 6-20-73 1524 Holland - Joe Spaulding - tap (3+87.0 MH)  
 250436 - 7-21-75 - 1451 Melrose - D. Hill (1+68)