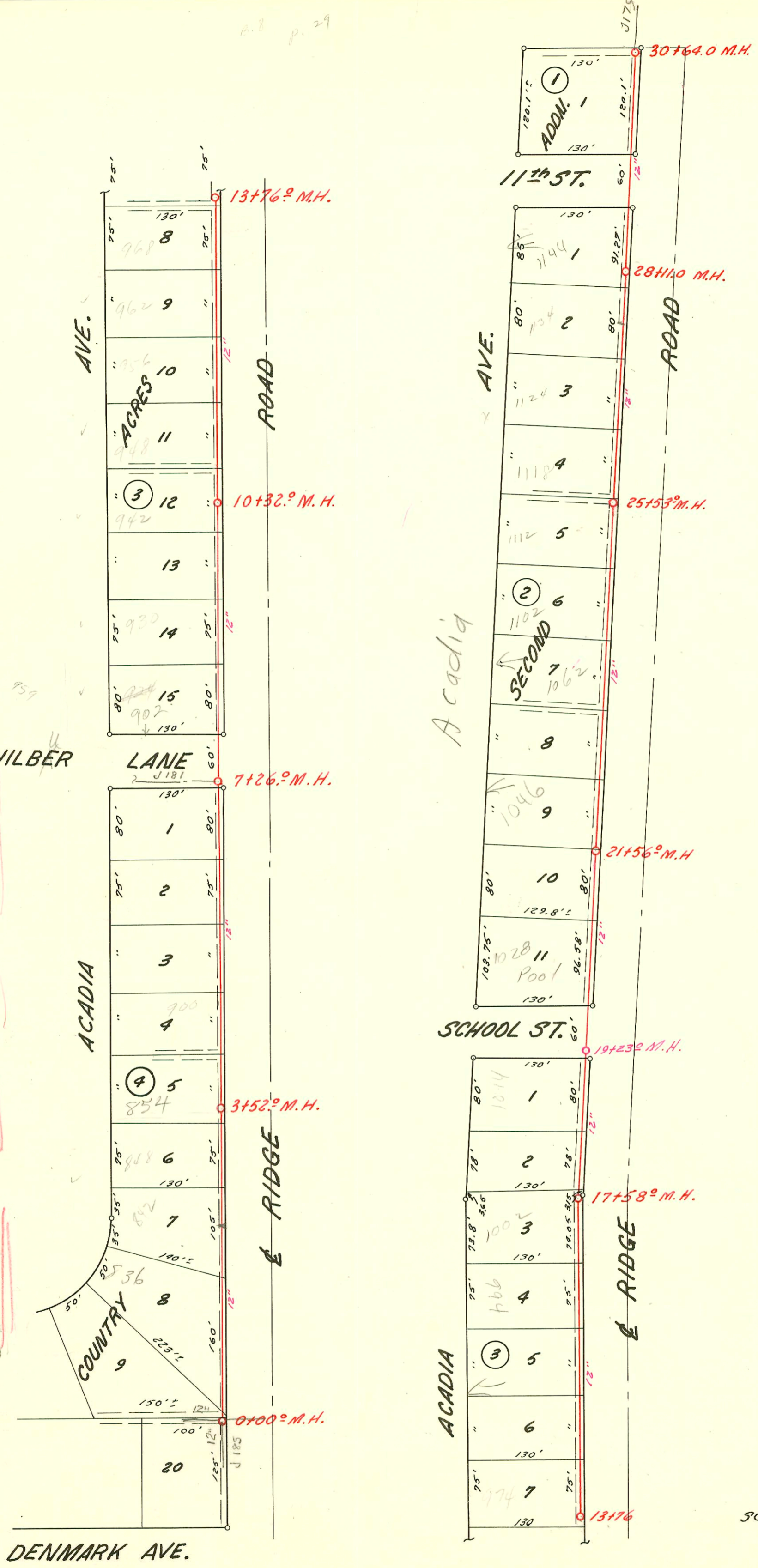


CAUTION - WATER TABLE ABOVE PIPE - MUST USE WELL POINTS - DW 11-13-73



MAIN "C"
 COUNTRY ACRES IMPROVEMENT DISTRICT
 FLOYD B. DEVLIN, ENGR. - UTILITY CONTRACTORS, INC.
 CONSTRUCTION DATE 1955 - BOOKED 4-13-1962

CONSTRUCTION RECORD						SERVICE RECORD						
STATION	ELEVATION		Depth	MANHOLE	4-INCH "Y" BRANCHES		No. of Permit		House Number		DATE OF PERMITS	
	Ground	Grade			North West	South East	North West	South East	North West	South East	North West	South East
0+00	13.4	04.50	8.9	0+00								
1+00	13.4	04.74	8.7		7+60							
2+00	13.4	04.98	8.4		top 2+83.2			C-22284	836			12-21-70
3+00	13.4	05.22	8.2		top 2+20			#B3937	848			8-11-65
	13.4	05.34	8.1	3+52.0	top 3+71			C42049	842			11-5-73
4+00	13.4	05.46	7.9		top 4+28.2			C7649	854 Acadia			3-29-68
5+00	13.3	05.70	7.6					C42049	900 Acadia			2-4-65
6+00	13.2	05.94	7.3						942 Acadia			11-5-73
7+00	13.2	06.18	7.0									
	13.2	06.25	6.9	7+26.0				top B2421	8+23	902		12-1-64
8+00	13.1	06.47	6.6					top B2422	8+78.6	930		12-1-64
9+00	13.1	06.77	6.3					Repair → top B2423	9+47	938	8/15/78	
10+00	13.0	07.07	5.9					top B2423	10+32	942		12-1-64
	13.0	07.17	5.8	10+32.0				top B2424	11+06	948		12-1-64
11+00	13.0	07.37	5.6									
12+00	13.1	07.67	5.4					top B2425	12+60.5	762		12-1-64
13+00	13.4	07.97	5.4									
	13.7	08.20	5.5	13+76.0	top 14+03			B2426	974	Acadia		12-1-64
14+00	13.8	08.28	5.5									
15+00	14.8	08.60	6.2					top B3081	5+11	906		4-12-65
16+00	16.4	08.92	7.4			16+18.0		11070	994	Acadia		5-31-84
17+00	18.4	09.24	9.2									
	17.1	out 09.42 in 09.52	7.7 7.6	17+58.0				top C7507	17+43.6	1082		3-25-68
18+00	19.0	09.66	9.3									
19+00	19.5	09.98	9.5	19+23.0								
20+00	20.4	10.30	10.1									
21+00	22.8	10.62	12.2									
	24.0	10.79	13.2	21+56								
22+00	24.4	10.90	13.5									
23+00	25.2	11.14	14.1									
24+00	25.8	11.38	14.4		top 24+05			top C22032	1102	Acadia		12-3-70
25+00	27.2	11.62	15.6		top 24+23.4				1112	Acadia		
	27.6	11.74	15.9	25+53.5	MH top			C2994	1118	Acadia		1-12-72
26+00	27.9	11.85	16.0									
27+00	28.3	12.09	16.2					top B3938	(26+71)	1124		8-11-65
28+00	28.6	12.33	16.3					59026	(27+52.4)	1139		12-10-76
	28.6	12.36	16.2	28+11.0	MH top			1914	1144	Acadia		12/30/87
29+00	29.0	12.57	16.4									
30+00	32.0	12.81	19.2									
	33.4	12.97	20.4	30+64.0	= 0100 J 179							

2001-00698 - 3/30/01 - 968 N Acadia - Roto-Rooter - 4" SCH 40 ITWINCO - no msmt

B608 - 1034 Acadia - 12-30-63 - Van Zebrite Pkwy - top (20+90)
 122887 1998 1144 Acadia - Cages - (28+06.5)