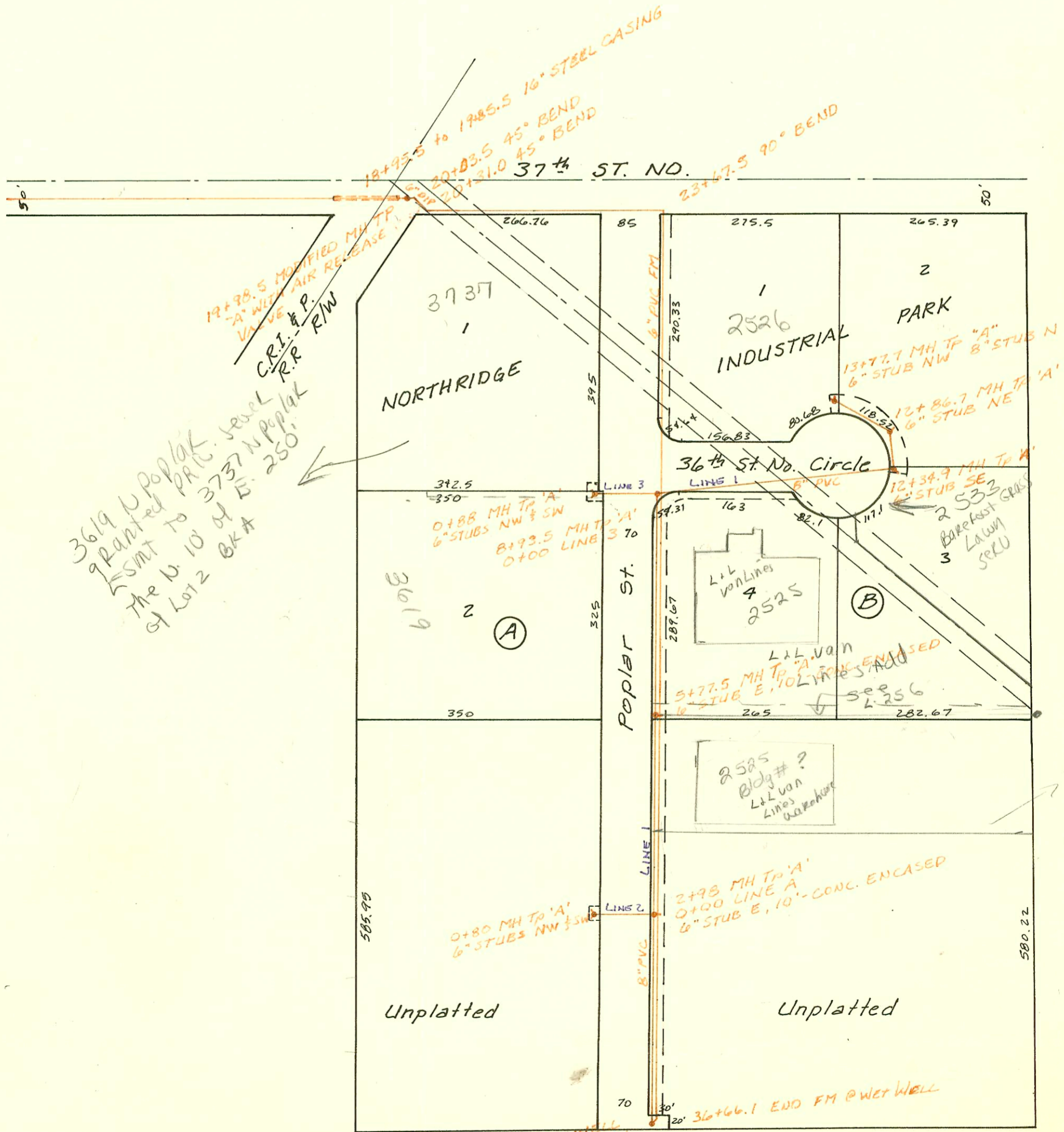
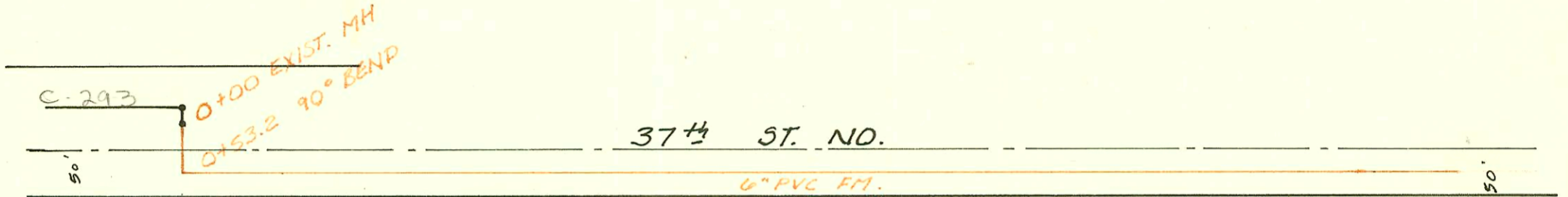


LAT 53 S.S. #23 INCL. LIFT STATION
468-76-245-813330-000-000-001
Built By Utility Cont.
Booked 4-8-85 From CG-24



Scale 1" = 150'

10-26



3619 U Poplar
granted PRIC. Jewel
to 3737 N Poplar
the N 10' of E. 250'
of Lot 2 BKA

19+98.5 MODIFIED MH TP
"A" WITH AIR RELEASE
VALVE
C.R.I. & P.
R.R. RW

0+00 WET WELL
0+00 FORCE MAIN

This area
requires
water main
& parking

CONSTRUCTION RECORD

SERVICE RECORD

STATION	ELEVATION		Depth	MANHOLE	4-INCH "Y" BRANCHES		No. of Permit		House Number		DATE OF PERMITS	
	Ground	Grade			North West	South East	North West	South East	North West	South East	North West	South East
LAT 17 MAIN 12, SW I (Cont.)												
3+00	159.4	146.26	13.1		3+49.2 TAP	3+11.8 TAP	13389	20749	12115	1317	4-4-85	5-27-86
4+00	155.7	146.52	9.2		4+15.7 TAP	4" SCH 40 3+80.1	15332	43-306877	12207	1315	1-3-86	12-9-93
	153.96	146.65	7.3	0+00 L-4A 4+50.1	4+09.6 TAP		18247		12215		4-29-87	
5+00	151.2	146.82	4.4									
	151.85	147.01	4.8	5+45.9	4" STUB NW		16767		12223		7-31-86	
LINE 4A 0+00	153.96	146.71	7.3	0+00								
1+00	150.6	147.11	3.5			0+91.8 TAP	18495		1312			6-11-87
	151.78	147.30	4.5	1+48.8	4" STUB SE							
LAT 53 LINE 1 S.S. #23 inc. Lift Station												
0+00	152.72	143.72	9.0	0+00 WET WELL								
1+00	149.6	144.11	5.5									
2+00	150.3	144.49	5.8									
	152.87	144.87	8.0	0+00 L-2 2+98		10'x6" STUB ENCASED						
3+00												
4+00	152.5	145.26	7.2									
5+00	153.6	145.64	8.0									
	154.02	145.93	8.1	5+77.5		10'x6" STUB ENCASED						
6+00	154.9	146.01	8.9									
7+00	155.5	146.38	9.1									
8+00	155.5	146.75	8.8									
	155.56	147.10 OUT 147.17 IN	8.5	0+00 L-3 8+93.5		8+82.9 TAP	21567		2525	2611.04	9-26-86	
9+00	155.5	147.19	8.3									
10+00	154.9	147.47	7.4									
11+00	154.6	147.75	6.9									
12+00	155.2	148.03	7.2									
	157.15	148.13 OUT 148.89 IN	8.1	12+34.9		4" STUB SE 6" STUB SE	94-13676?		2533	3674.04	8-30-84	
	157.12	149.04 OUT 149.10 IN	8.1	12+86.7		6" STUB NE						
13+00	156.2	149.14	7.1									
	157.05	149.40	7.7	13+77.7		8" STUB N 6" STUB NW	97-20837		2526	3678	2-14-87	
LINE 2 0+00	152.87	144.93	7.9	2+98 L-1 0+00								
	153.51	145.31	8.2	0+80		6" STUB NW 6" STUB SW						
LINE 3 0+00	155.56	147.30	8.3	8+93.5 LINE 1								
	156.20	148.51	7.7	0+88		4" STUB SE with L-1 or 6" STUB NW 6" STUB SW	93-15216-7	12655	3787 N Poplar	3619 77 Poplar	6-21-93	11-27-84
FORCE MAIN 0+00	141.0	135.25	5.8	0+00 EXIST								
0+53.2	138.0	134.89	3.1									
2+00	138.5	135.30	3.2									
3+00	139.6	136.50	3.1									
6+00	145.7	142.62	3.1									
10+00	152.5	149.34	3.2									
12+00	155.2	152.58	2.4									
13+25	158.2	154.52	3.7									
16+00	159.3	156.20	3.1									
18+95.5	163.7	157.60	6.1									
19+98.5	164.5	158.80	5.7	19+98.5								
23+67.5	159.5	157.06	2.4									
26+11	157.0	152.33	4.7									
29+50	155.6	150.99	4.6									
33+00	152.3	149.24	3.1									
35+75	149.6	146.72	2.9									
36+66.1	152.9	146.44	6.5	36+66.1								