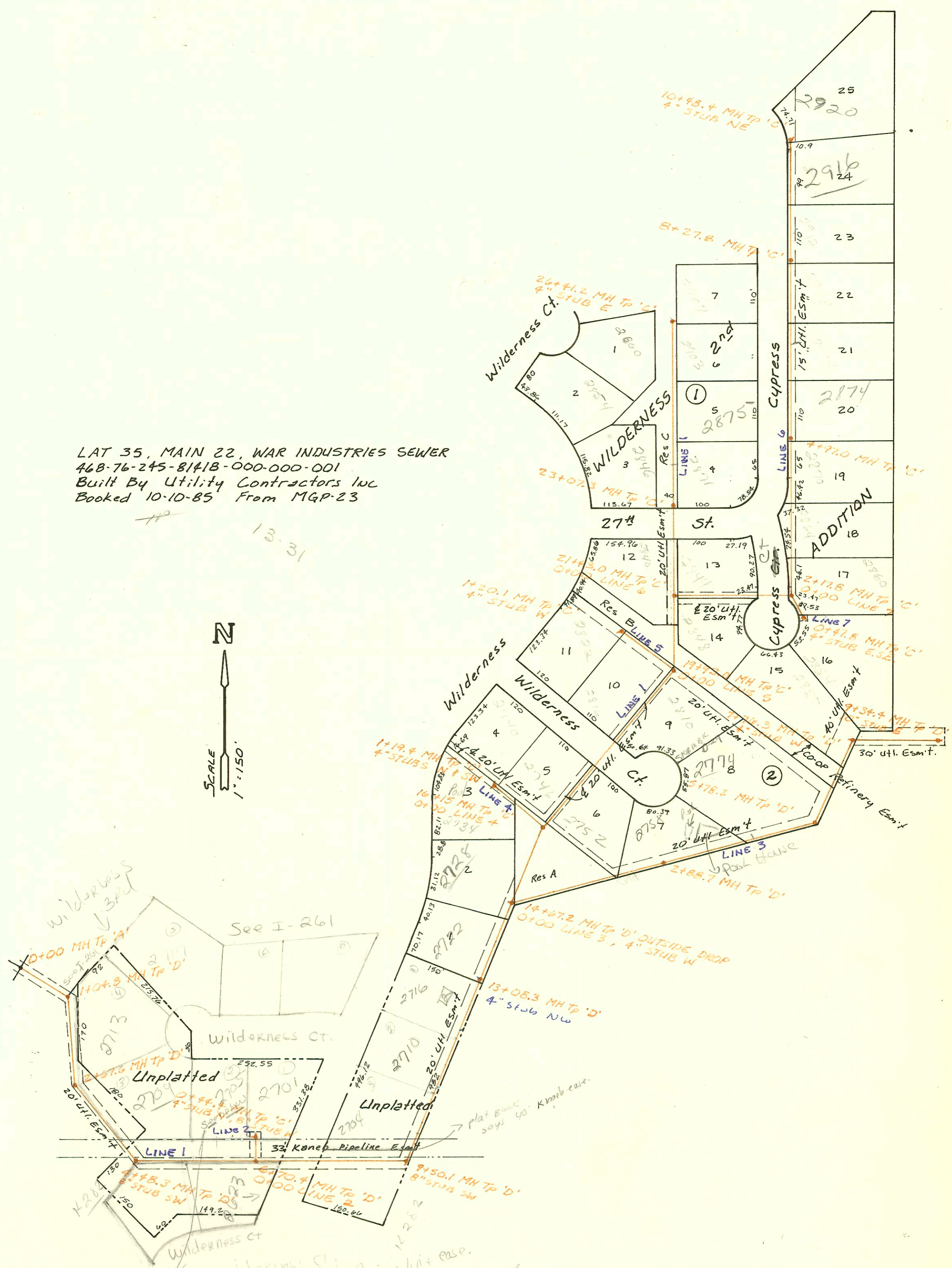


LAT 35, MAIN 22, WAR INDUSTRIES SEWER
468-76-245-81418-000-000-001
Built By Utility Contractors Inc
Booked 10-10-85 From MGP-23



Note: 2705 Wilderness Ct.
Refer to letter enclosed on
this page regarding Kanab pipe line case.
which states that Kanab must be notified
48 hrs in advance if it is necessary to
repair sewer line for this address. Call 316-262-1408
11/05/87
BR

CONSTRUCTION RECORD						SERVICE RECORD						
STATION	ELEVATION		Depth	MANHOLE	4-INCH "Y" BRANCHES		No. of Permit		House Number		DATE OF PERMITS	
	Ground	Grade			North West	South East	North West	South East	North West	South East	North West	South East
LAT 35. LINE 1 MAIN 22	WAR	INDUSTRIES	SEWER									
0+00	200.15	191.19	9.0	0+00 EXIST. MH.								
1+00												
	205.00	191.52	13.5	1+04.8				20096	2713 Wilderness			2-16-88
2+00	204.0	191.67	12.3									
	203.89	191.78	12.1	2+67.6								
3+00	203.6	191.84	11.8					19923	2709 Wilderness			1-5-88
4+00	205.2	192.04	13.2									
	205.73	192.14	13.6	4+48.3								
5+00	206.5	192.24	14.3									
								19041	2705 Wilderness			9/10/87
6+00	206.9	192.43	14.5									
	208.33	192.56	15.8	0+00 L-2 6+70.4								
7+00	209.5	192.62	16.9									
8+00	210.4	192.83	17.6									
9+00	208.8	193.04	15.8									
	208.98	193.14	15.8	9+50.1								
10+00	209.0	193.22	15.8									
11+00	209.6	193.39	16.2					26018	2704 Wilderness			8-27-90
								19326	2710 Wilderness			10/15/87
12+00	209.6	193.55	16.1									
13+00												
	211.61	193.73	17.9	13+08.3								
14+00	211.0	193.93	17.1									
	211.83	194.07	17.8	0+00 L-3 14+67.2								
15+00	212.2	200.24	12.0									
16+00	213.5	201.11	12.4									
	214.91	201.25	13.7	0+00 L-4 16+15.8								
17+00	214.0	201.62	12.4									
18+00	214.7	202.05	12.7									
19+00	214.5	202.49	12.0									
	215.12	202.89	12.2	0+00 L-5 19+93.0								
20+00	215.0	202.92	12.1									
21+00	215.4	203.41	12.0									
	216.01	203.62	12.4	0+00 L-6 21+43.0								
22+00	216.1	204.49	11.6									
23+00												
	217.17	206.14	11.0	23+07.3								
24+00	217.6	206.80	10.8									
25+00	218.1	207.52	10.6									
26+00	218.3	208.24	10.1									
	217.91	208.53	9.4	26+41.2								
LINE 2 LINE 3 0+00	208.33	195.96	12.4	0+00 6+70.4 L-1								
	208.95	196.76	12.2	0+44.4								
0+00	211.83	194.07	17.8	0+00 14+67.2 L-1								
1+00	211.4	194.24	17.2									
2+00	211.0	194.40	16.6									
	210.64	194.55	16.1	2+88.7								
3+00	210.5	194.57	15.9									
4+00	210.0	194.76	15.2									
5+00	209.0	194.94	14.1									
	208.56	195.09	13.5	5+78.2								
6+00	208.0	195.14	12.9									
(CONT. ON J-216)												

Form #192-020 (July, 1981)

SCH40 Tied back to existing bldswr with wye - 2V45, 1TWINCO, 1H45, 1H22, WYE
 Rep. 77
 92-3320 7 3/10/92 - 2810 N. Wilderness Ct - Tie Rel House into Bldg Sewer - McCullough - (19+394) top
 96-0416-7 4/30/96 - 2722 N Wilderness - R-4" PVC40 - Replaced 4 1/2' section of sewer 2ft west of east side + 10ft North of South side of pool
 2001-02095 8/21/01 2754 N Wilderness (Park House) McCullough: