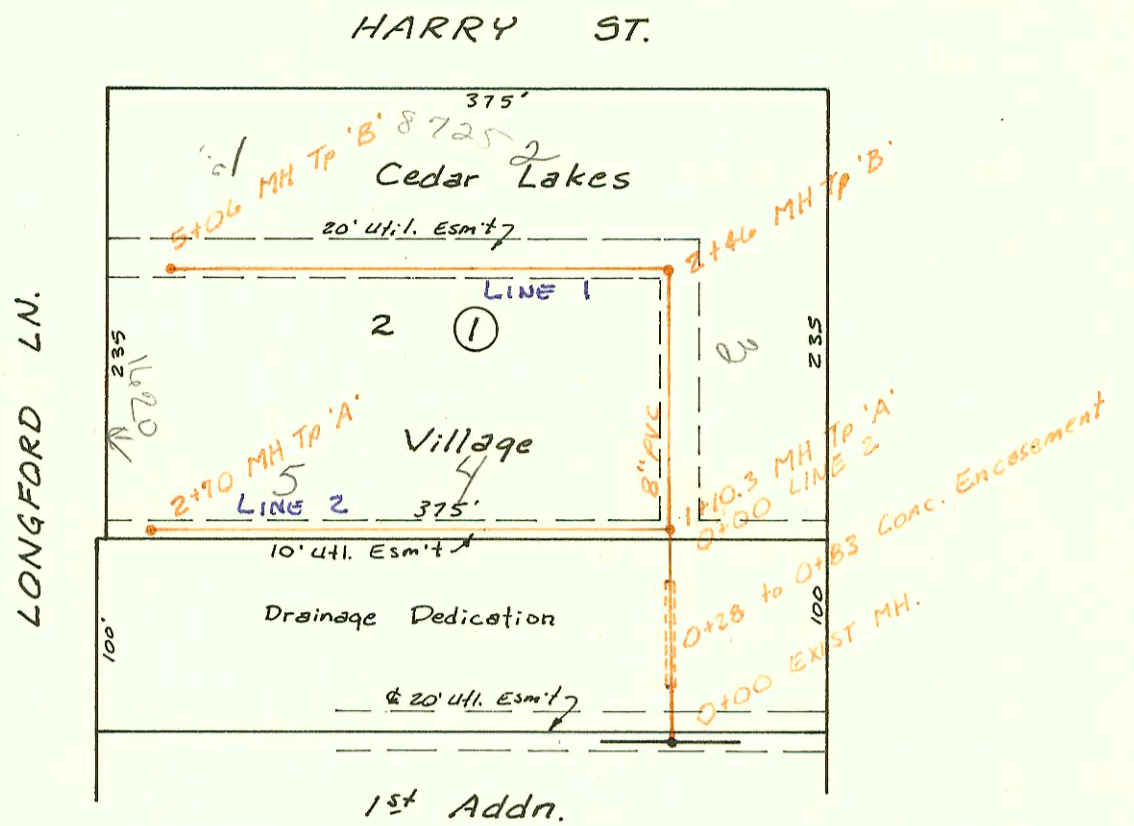
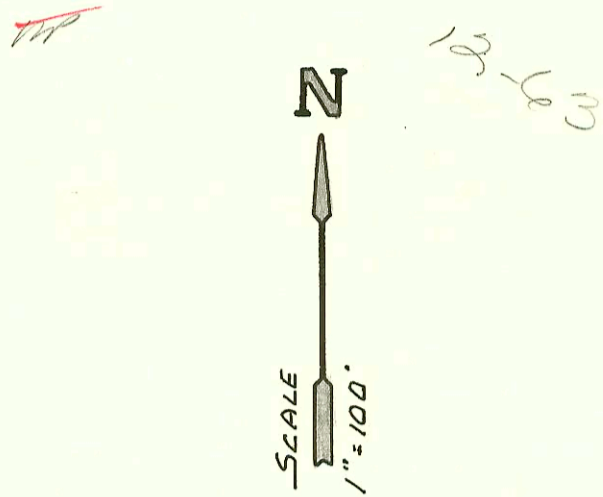
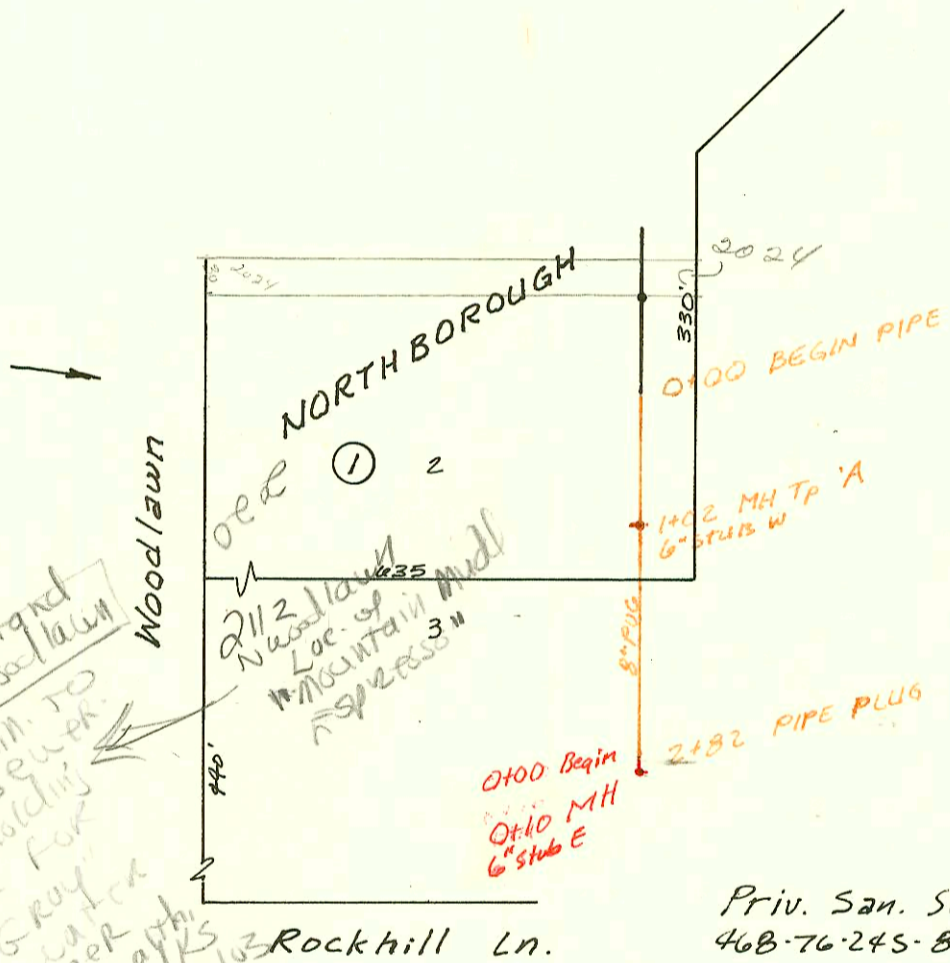


Priv. San. Sewer Ext. for Cedar Bridge Townhomes
 in Cedar Lakes Village First Addn.
 468-76-245-80000-000-000-008
 Built By Carter Const.
 Booked 10-21-85 From Plan & Cards

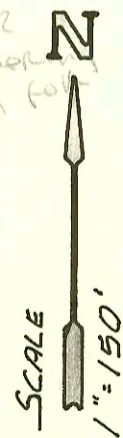
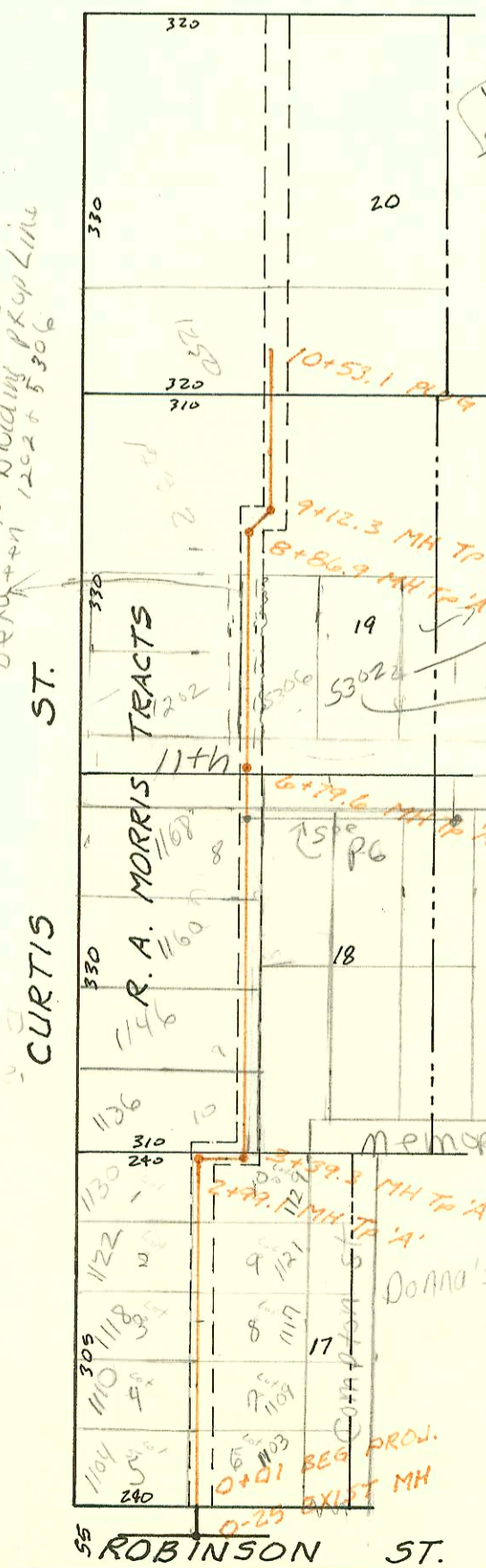


Priv. San. Sewer - Brittany Center
 Expansion
 468-76-245-80000-000-000-008
 Built By Mid-States Const.
 Booked 10-23-85 From Plan & Cards

12-37



20' orig. EASE UAC.
 and EASE ON THESE LOTS
 SHIFTED TO DIVIDING PLOT LINE
 DENY WITH 1202 + 5306



LAT 242, MAIN 5, S.S. # 22
 468-76-245-81392-000-000-001
 Built By Barnes & Morris
 Booked 10-30-85 From CQ-22

12-37

