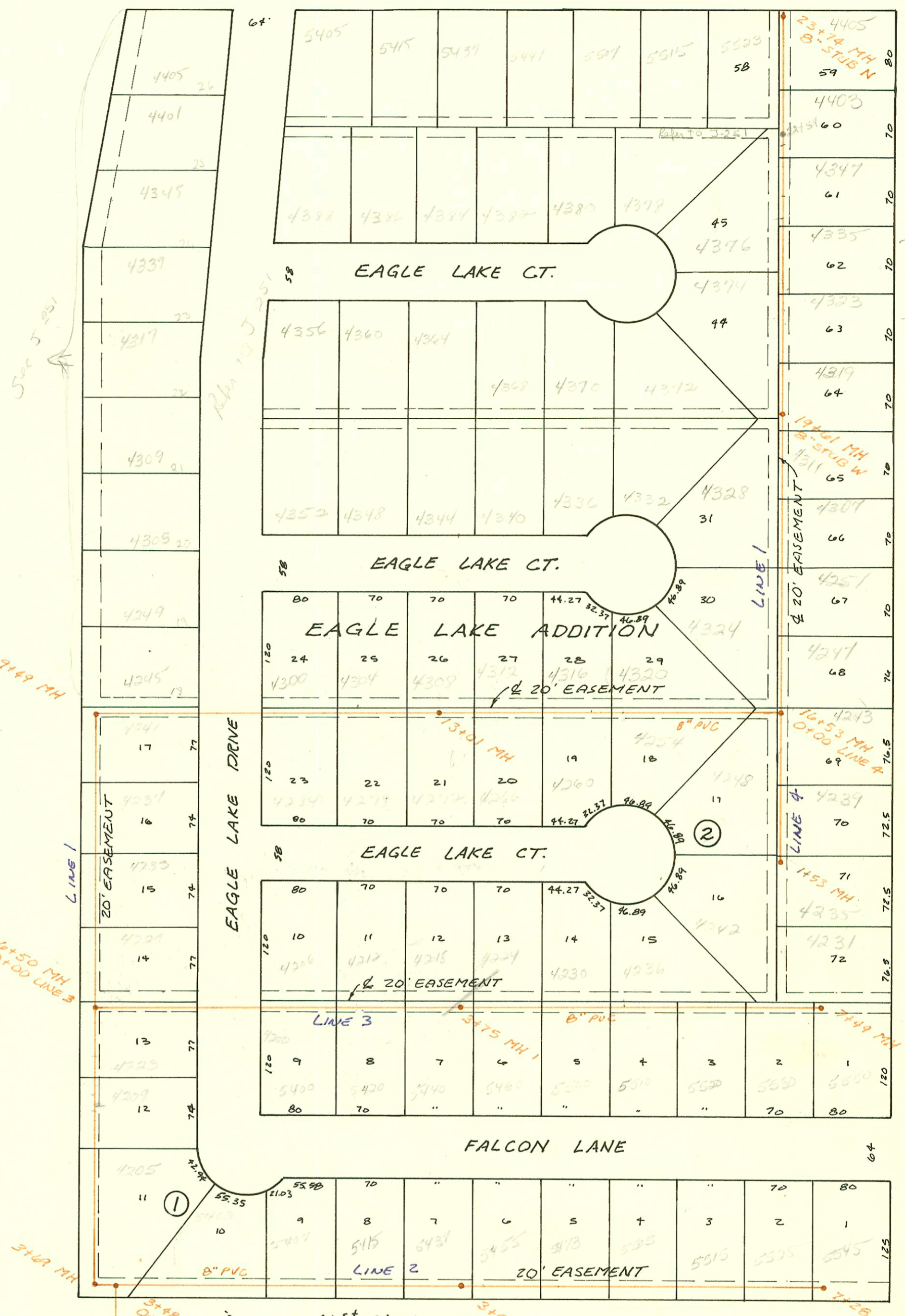
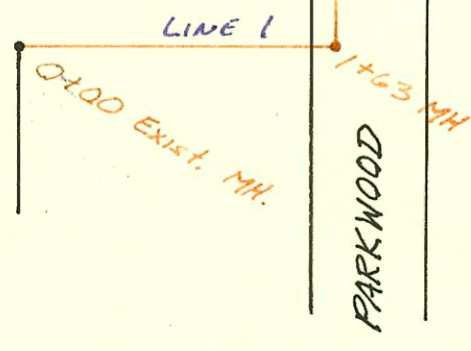


PRAIRIE HAWK DRIVE



41st St. No.

Priv. SAN. Sewer for Eagle Lake Addition to Bel Aire
468-76-245-80001-000-000-006
Built By Utility Contractors, Inc.
Booked 12-20-1985 From 'As Built'



Handwritten notes and signatures at the bottom right of the plan.

CONSTRUCTION RECORD

SERVICE RECORD

Priv. S.S.
LINE 1

STATION	ELEVATION		Depth	MANHOLE	4-INCH "Y" BRANCHES		No. of Permit		House Number		DATE OF PERMITS	
	Ground	Grade			North West	South East	North West	South East	North West	South East	North West	South East
for EAGLE LAKE ADDITION to BEL AIRE												
0+00	204.12	197.42	6.7	EXIST. 0+00								
1+00	206.8	197.84	9.0									
	207.31	198.11	9.2	1+63								
2+00	207.6	198.23	9.4									
3+00	208.1	198.57	9.5	0+00 L-2 3+48								
	207.73	198.73	9.0	3+69								
	207.73	198.93	8.8									
4+00	207.0	199.02	8.0		4+48.0 TAP		16624		4205 Eagle Lake		7-15-86	
5+00	206.4	199.33	7.1		5+50 TAP		23273 17356		4209 510 Eagle Lake		8-4-86 11-24-86	
					5+69.0 TAP		23874		4204 Eagle Lake		8-4-86	
6+00	205.6	199.63	6.0	0+00 L-3 6+50	6+01.0 TAP		15107		4223 Eagle Lake		11-25-85	
	204.98	199.78	5.2		6+13.2 TAP		14538		4209 Eagle Lake		8-19-85	
7+00	205.8	199.95	5.9									
					7+25.0 TAP		14960		4203 Eagle Lake		11-4-85	
8+00	206.5	200.29	6.2		8+23.0 TAP		14537		4207 Eagle Lake		8-19-85	
9+00	207.9	200.63	7.3									
	208.60	200.80	7.8	9+49								
10+00	210.4	201.01	9.6									
11+00	211.4	201.43	10.0		11+96.0 TAP	11+47.0 TAP	22624	17098	4309 Eagle Lake 4284 Eagle Lake		2-21-89 10-13-86	
12+00	210.5	201.84	8.7		12+38.0 TAP	12+41.0 TAP	18294	16565	4204 Eagle Lake 4318 Eagle Lake		5-11-87 7-2-86	
13+00	209.1	202.26	6.8		12+96.5 TAP		17786	16673	4304 Eagle Lake 4372 Eagle Lake		2-11-87 1-23-86	
	209.78	202.28	7.5	13+01	12+55.5 TAP	13+51.0 TAP	17253	16567	4312 Eagle Lake 4260 Eagle Lake		11-5-86 7-2-86	
14+00	208.1	202.83	5.3									
					14+59.0 TAP	14+69.0 TAP	17100	17099	4316 Eagle Lake 4260 Eagle Lake		10-13-86 10-13-86	
15+00	211.1	203.38	7.7		14+99.0 TAP	15+05.0 TAP	19052	16099	4320 Eagle Lake 4255 Eagle Lake		9-14-87 4-18-86	
16+00	214.1	203.92	10.2	0+00 L-4 16+53								
	215.69	204.24	11.5									
17+00	215.1	204.61	10.5									
					17+81 TAP	17+55.0 TAP	17255	19509	4304 Eagle Lake 4251 Edge Moor		2-5-87 11-10-87	
18+00	213.8	205.39	8.4		18+49 TAP	18+39.5 TAP	17826	21516	4328 Eagle Lake 4307 Edge Moor		2-19-87 9-15-88	
19+00	212.6	206.17	6.4									
	213.55	206.65	6.9	19+61								
20+00	214.1	206.83	7.3		20+52.0 TAP		18511		4374 Eagle Lake 4319 Edge Moor		6-16-87 10-13-89	
21+00	216.6	207.27	9.3									
					21+54.0 TAP		24841		4323 Edge Moor		2-20-90	
					21+35.0 TAP		24842		4335 Edge Moor		2-20-90	
22+00	219.9	207.72	12.2		21+66 TAP	21+92.0 TAP	20068	20645	4370 Eagle Lake 4347 Edge Moor		2-10-88 5-6-88	
					22+42.0 TAP		20214		4403 Edge Moor		3-7-88	
23+00	222.1	208.17	13.9									
	222.80	208.50	14.3	23+74 3+48 L-1 0+00	23+49.0 TAP		20213		4405 Edge Moor		3-1-88	
0+00	207.73	198.73	9.0									
1+00	210.1	200.75	9.4		1+05.0 TAP		16564		5403 Eagle Lake		7-2-86	
					1+86.0 TAP		16126		5407 Eagle Lake		4-21-86	
2+00	212.6	202.76	9.8									
					2+99.0 TAP		14698		5415 Eagle Lake		4-17-85	
3+00	214.7	204.78	9.9		3+18.0 TAP		16563		5457 Eagle Lake		7-2-86	
	215.62	205.87	9.8	3+54								
4+00	215.8	206.50	9.3									
5+00	216.6	207.88	8.7		5+29.0 TAP		14002		5505 Eagle Lake		6-14-85	
6+00	218.1	209.27	8.8		6+36.0 TAP		13971		5575 Eagle Lake		6-11-85	
					6+92.0 TAP		14024		5500 Eagle Lake		6-19-85	
7+00	219.7	210.65	9.1		7+20.0 TAP		14023		5590 Eagle Lake		6-19-85	
0+00	204.98	199.78	5.2	7+28 6+50 L-1 0+00								
1+00	205.6	200.38	5.2									
2+00	206.4	200.97	5.4		2+13.0 TAP		15669		5575 Eagle Lake		2-13-86	
					2+90.0 TAP	2+97.0 TAP	15668	14691	5575 Eagle Lake 5400 Eagle Lake		2-13-86 9-13-85	
3+00	207.9	201.57	6.3		3+36.0 TAP	3+46.0 TAP	16111	16908	5575 Eagle Lake 5440 Eagle Lake		4-17-86 2-3-86	

LINE 2

LINE 3