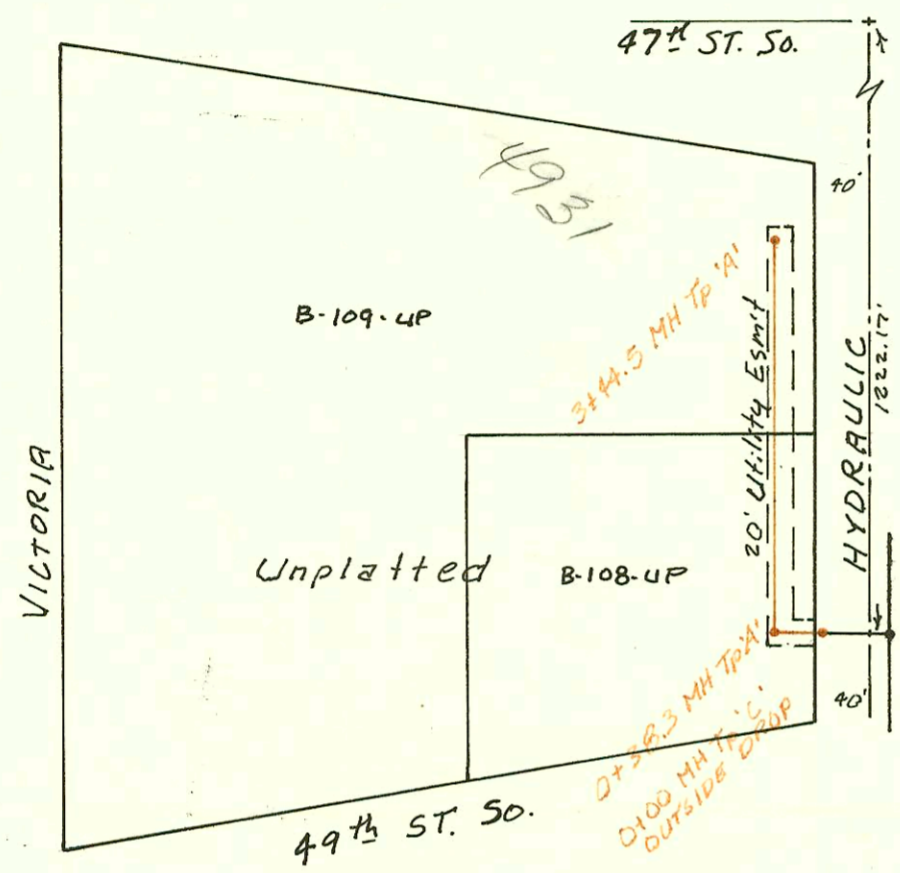


LAT 35, MAIN 5A, WAR INDUSTRIES SEWER
 468-76-245-81475-000-000-001
 Built By Utility Cont. Inc.
 Booked 2-25-86 From JLA # 27

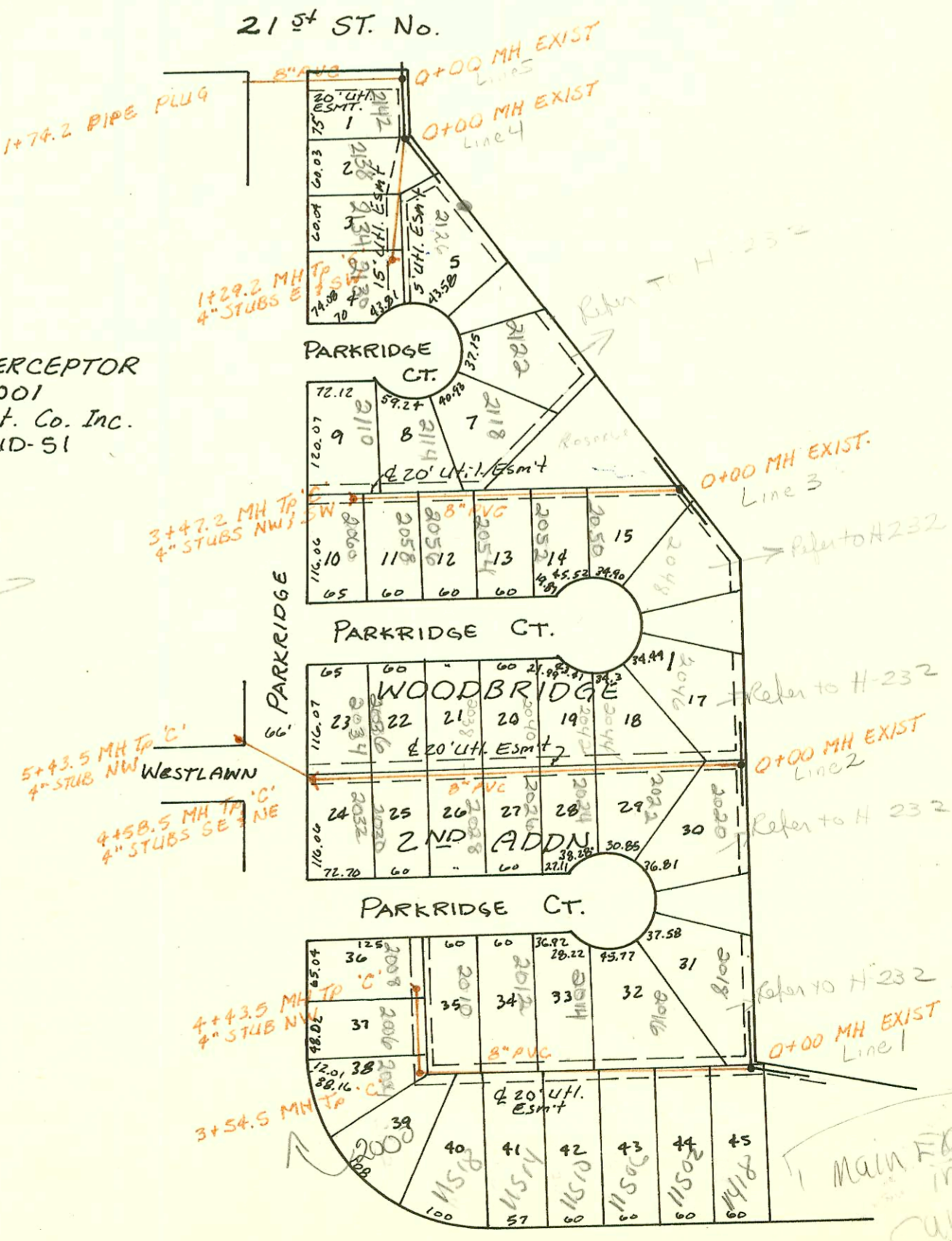
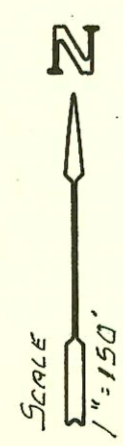
12-49



Priv. San. Sew. EXTENSION FOR YELLOW FREIGHT SYSTEM.
 468-76-245-80001-000-000-023
 Built By LaCuesta Corp.
 Booked 3-13-86 From As Built Plan



LAT 12, MAIN 12, SW INTERCEPTOR
 468-76-245-81033-000-000-001
 Built By L.A. Knebler Const. Co. Inc.
 Booked 3-31-86 From SWD-51



Main Ext. in progress
 cannot connect
 to 12" main
 in rear

CONSTRUCTION RECORD							SERVICE RECORD					
STATION	ELEVATION		Depth	MANHOLE	4-INCH "Y" BRANCHES		No. of Permit		House Number		DATE OF PERMITS	
	Ground	Grade			North West	South East	North West	South East	North West	South East	North West	South East
LAT 35, MAIN 5A, WIS												
0+00	182.67	172.76	9.9	0+00 EXIST.								
	182.59	172.93	9.7	0+24.3								
1+00	182.8	173.52	9.3									
2+00	182.8	174.29	8.5									
	182.63	174.44	8.2	2+18.8								
	183.03	174.73	8.3	2+37.5		4" STUB S	1457.3		37015			8-22-85
PRIV. SAN. SEWER EXT. FOR YELLOW FREIGHT SYSTEM												
0+00	82.07	73.78 IN	8.3	0+00								
	82.32	74.07 OUT	8.3	0+38.3								
1+00	82.3	74.52 IN	7.8									
2+00	81.8	74.96	6.8									
3+00	82.2	75.40	6.8									
	82.82	75.59	7.2	3+44.5		4" STUB W	1512.3		4931 S/H			11-26-85
LAT 12, MAIN 12, SW I.												
LINE 1 0+00	160.48	147.73	12.8	0+00 EXIST.								
1+00	161.2	148.42	12.8									
2+00	162.1	149.11	13.0									
3+00	162.7	149.79	12.9									
	162.58	150.17 OUT	12.4	3+54.5								
4+00	161.6	150.74	10.9									
	161.45	151.26	10.2	4+43.5		4" STUB NW						
LINE 2 0+00	160.22	149.26	11.0	0+00 EXIST.								
1+00	161.0	149.84	11.2									
2+00	162.0	150.41	11.6									
3+00	162.6	150.99	11.6									
4+00	161.6	151.56	10.0									
	161.86	151.86	10.0	4+58.5		4" STUB NE						
5+00		152.01										
LINE 3 0+00	161.76	152.12	9.6	0+00 EXIST.								
1+00	161.0	149.10	11.9									
2+00	162.0	149.68	12.3									
3+00	161.4	150.26	11.1									
LINE 4 0+00	161.34	150.53	10.8	0+00 EXIST.								
1+00	161.84	149.55	12.3									
LINE 5 0+00	161.0	150.29	10.7									
1+00	160.91	150.51	10.4									
1+74.2	165.4	148.49	16.9									
	165.4	148.79	16.6									

93-25516-7 9-28-83 4931 S. Hydraulic - MC