

See p156 for
212 Meridian
Inb

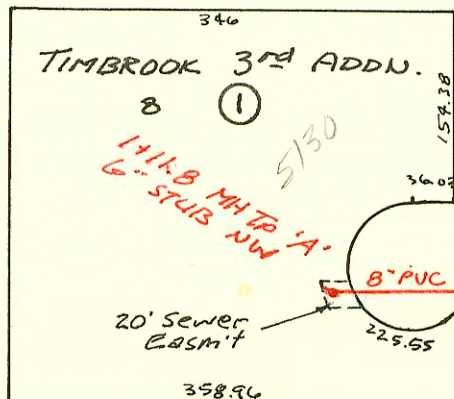
Priv. S.S. Ext. for Blk 1, Southwest Industrial Addn.
468-76-245-80001-000-000-050
Built By Triple 'C' of Wichita
Booked 5-12-86 From DK #6



Priv. S.S. Ext. for Lots 11 & 12, Blk 2
Southwest Industrial Addn.
468-76-245-80001-000-000-064
Built By Triple 'C' of Wichita
Booked 5-12-86 From DK #6

LAT 46, MAIN S, S.S. #23
468-76-245-81509-000-000-001
Built By Stannard Const
Booked 5-22-86 From BR-29

11-38



20th ST. No.

10' UTILITY ESMT.

10' UTILITY ESMT.

10' UTILITY ESMT.

10' UTILITY ESMT.

10' UTILITY ESMT.

10' UTILITY ESMT.

10' UTILITY ESMT.

10' UTILITY ESMT.

10' UTILITY ESMT.

10' UTILITY ESMT.

10' UTILITY ESMT.

CONSTRUCTION RECORD						SERVICE RECORD						
STATION	ELEVATION		Depth	MANHOLE	4-INCH "Y" BRANCHES		No. of Permit		House Number		DATE OF PERMITS	
	Ground	Grade			North West	South East	North West	South East	North West	South East	North West	South East
Priv. S.S. for Blk 1, Southwest Industrial Addn.												
0+00	103.5	95.86	7.6	EXIST. 2+00								
1+00	103.9	96.16	7.7		1109.3 TAP		18519		21455 Model 101			6-7-87
	104.2	96.21 OUT 96.31 IN	8.0	1+17.3	1+35.3 TAP		17231		2141.5 Model 101	odd chg		10-30-86
2+00	103.0	96.50	6.5									
3+00	103.3	96.74	6.6									
4+00	103.5	96.97	6.5									
	104.2	97.11 OUT 97.24 IN	7.1	4+60.0								
5+00	104.1	97.36	6.7		4" SCH 40 let 80		1100959		21247 Edwards			10-10-89
6+00	104.0	97.66	6.3									
7+00	104.1	97.96	6.1		4" SCH 40 CITY 7+00 TAP		2005-5183		2100 Edwards			3-21-80
	104.9	98.20 OUT 98.30 IN	6.7	7+80.0								
8+00	104.6	98.36	6.2					2005-21874	2051 Meridian			7-18-83
9+00	104.1	98.66	5.4									
10+00	104.6	98.96	5.6				2005-0256		2056 Edwards			10-2-83
11+00	105.1	99.26	5.8									
	105.5	99.27	6.2	11+04.0	6" STUB NE 6" STUB NW							
Priv. S.S. for Lots 11 & 12 Blk 2, Southwest Industrial Addn.												
0+00	103.7	97.00	6.7	0+00								
1+00	103.1	97.37	5.7									
2+00	103.2	97.74	5.5									
3+00	103.5	98.11	5.4									
	103.11	98.27	4.8	3+43.6	6" STUB W.		15791		2043 Meridian			7-11-86
LAT 46, MAIN 5, S.S. # 23												
0+00	227.8	218.66	10.1									
1+00	228.0	218.90	9.1									
	228.53	218.93	9.6	1+11.8	6" STUB NW		16425		5130 E. 20th			6-9-86
LAT 17, MAIN 9, S.S. # 23 (CONT.)												
0+00	176.55	159.18	17.2	EXIST. 0+00								
1+00	176.4	160.65	15.7		4" PVC 40 1+80.0 TAP		1-3178-7		6911 Oakmont			9-5-91
2+00	177.0	162.12			4" PVC 40 2+07.0 TAP		71-3674-7		6905 Oakmont			11-1-91
3+00	177.8	163.59			4" PVC 40 3+19.5 TAP		72-4484-7		6904 Oakmont			3-31-92
	180.03	164.32	15.7	3+49.5	4" STUB N		71-3672-7		6915 Oakmont			11-1-91
4+00	178.9	164.83										
5+00	180.2	165.84										
6+00	181.5	166.85										
	183.46	167.69 OUT 168.87 IN	15.8 14.6	6+83.2								
7+00	183.0	169.05			7+38.2 TAP		18299		3802 J. Rushwood			5-1-87
8+00	181.0	170.13			8+13.2 TAP		18298		3806 J. Rushwood			5-1-87
					8+89.2 TAP		20367		3810 Rushwood			3-28-88
9+00	182.5	171.20										
					9+49.2 TAP		20865		3814 Rushwood			6-13-88
10+00	184.1	172.27			10+48.2 TAP		19231		3815 Rushwood			10/05/87
11+00	185.6	173.35										
	186.51	173.77	12.94'	11+39.2	11+24.7 TAP		19009		3822 Rushwood			10/05/87
12+00	186.4	174.63			12+33.1 TAP		21517		3824 Rushwood			9-15-86
	187.17	175.67	11.5'	12+73.1	4" STUB W		19054		3902 Rushwood			9-14-87

Form #192-020 (July, 1981)

1999-00959-21245 EDWARDS - CITY TAP - 4" INCREASED TO 6" PVC 40 - BK CONTRACTING INSTALLED
1,000 GAL MUD + OIL INTERCEPTOR WITH INVERT 10/28/99