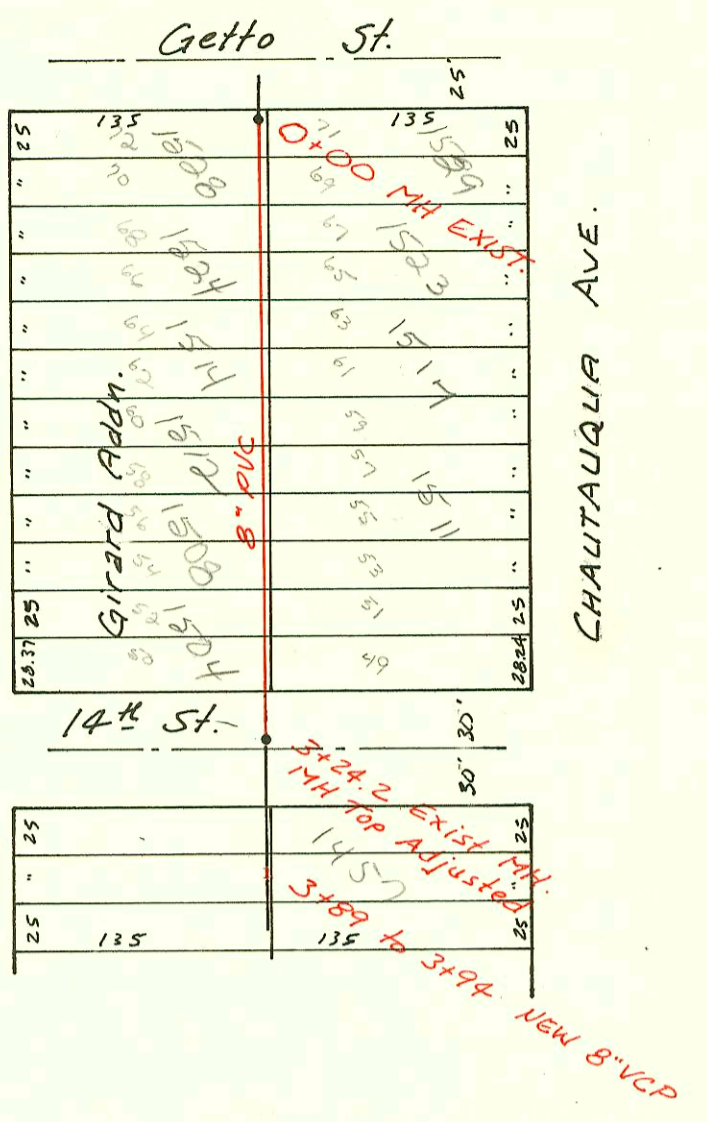
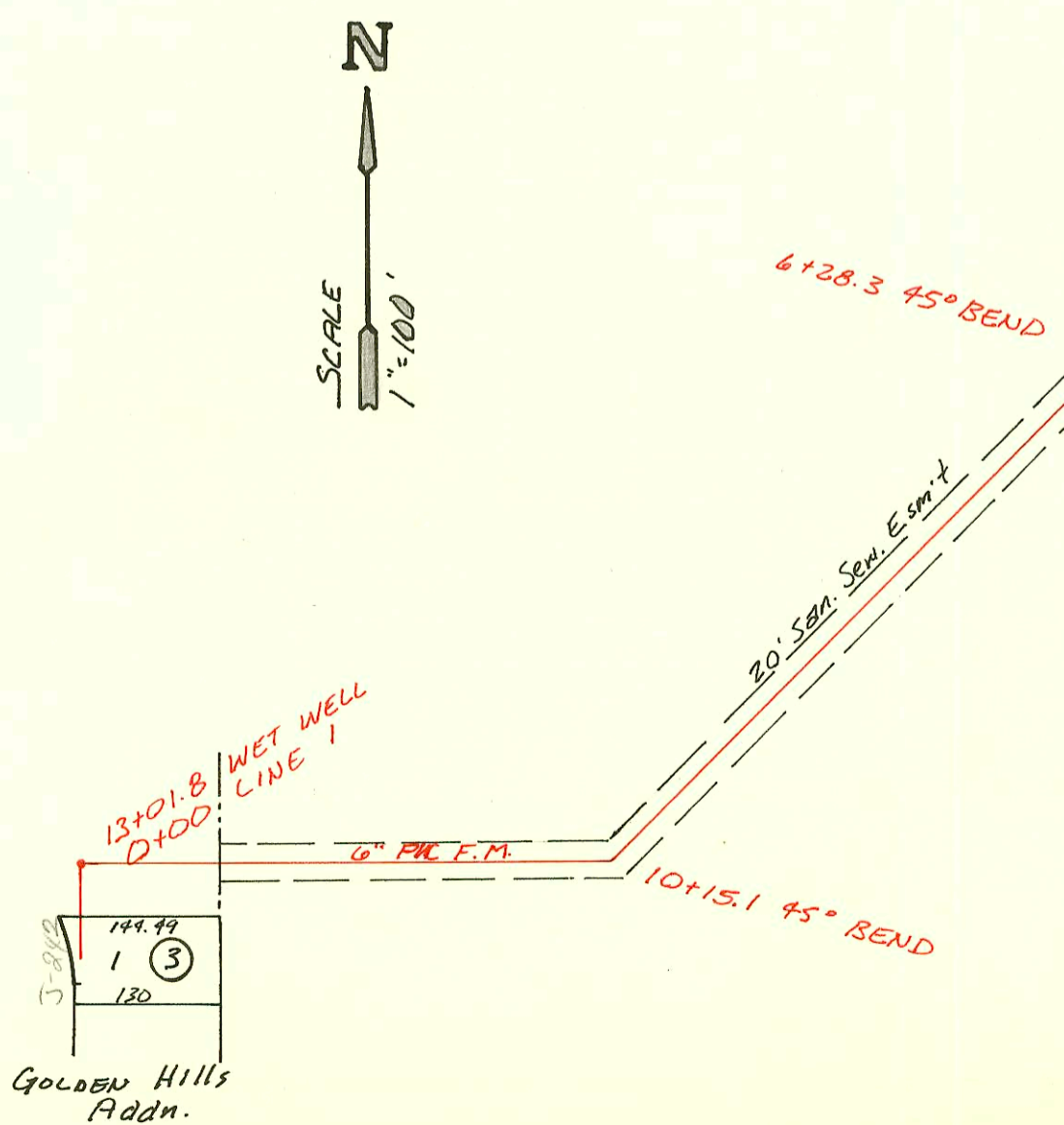
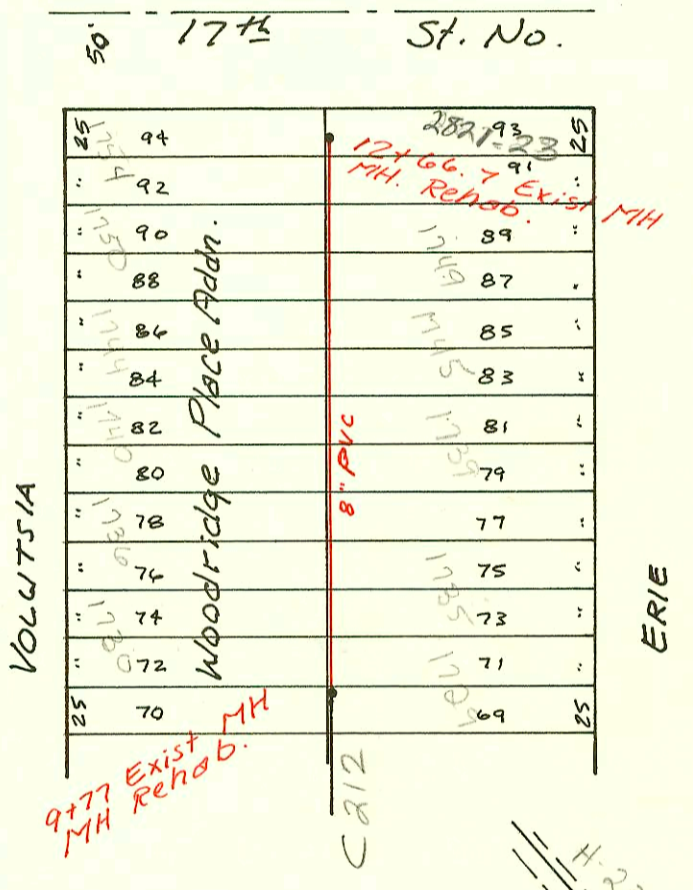


Reconst. Portion Dist P,
S.S #12
468-76-245-81481-000-000-001
Built By Wildcat Const.
Booked 6-12-86 From JLA #32

Estelle Ave
(Old Sewer Book E-208)



Reconst. Portion Dist. P, S.S #12
S. of 17th betw. Erie & Volusia
468-76-245-81472-000-000-001
Built By Wildcat Const.
Booked 6-13-86 From JLA #12



Priv. S.S. for GOLDEN HILLS ADDN
468-76-245-80001-000-000-042
Built By Barnes & Morris
Booked 6-24-86 From 13-C

CONSTRUCTION RECORD							SERVICE RECORD					
STATION	ELEVATION		Depth	MANHOLE	4-INCH "Y" BRANCHES		No. of Permit		House Number		DATE OF PERMITS	
	Ground	Grade			North West	South East	North West	South East	North West	South East	North West	South East
Reconst 16th to Port. Dist. P, SS #12												
0+00	133.51	123.91	9.6	EXIST 0+00			15610	15587	1704 North	1701 Estelle	2-5-86	2-5-86
1+00	132.7	124.20	8.5				15580		1706 Street		2-5-86	
2+00	133.0	124.49	8.5		4" SCH 40 - 20		15581	15588	1718 R (Street)	1715 Estelle	2-5-86	2-5-86
	134.39	124.75	9.6	EXIST 2+92.0			15582	15590	1722 (Street)	1725 Estelle	2-5-86	2-5-86
3+00	134.3	124.78	9.5		4" SCH 40 - 20		15583	15591	1730 (Street)	1731 Estelle	2-5-86	2-5-86
4+00	133.9	125.16	8.7				15584	15592	1736 (Street)	1741 Estelle	2-5-86	2-5-86
5+00	133.6	125.55	8.1				15585	15593	1740 (Street)	1745 Estelle	2-5-86	2-5-86
6+00	133.6	125.93	7.7				15586		1744 (Street)		2-5-86	
	132.50	126.10	6.4	EXIST 6+44.5				15594		1749 Estelle		2-5-86
14th to Getto, Chautauqua & Erie												
0+00	147.03	140.48	6.6	EXIST 0+00			15601	15596	1752 Erie	1751 Chautauqua	2-5-86	2-5-86
1+00	147.8	141.12	6.7				15602	15597	1754 Erie	1753 Chautauqua	2-5-86	2-5-86
2+00	148.8	141.76	7.0				15603		1754 Erie		2-5-86	
3+00	150.7	142.40	8.3				15604		1758 Erie		2-5-86	
	150.82	142.55	8.3	EXIST 3+24.0			15605		1758 Erie		2-5-86	
Reconst. Sof. 17th Port. Dist P, SS #12												
9+77.0	147.05	137.41	9.6	EXIST 9+77.0			15606		1760 Volusia		2-13-86	
10+00	146.4	137.50	8.9				15607	15602	1760 Volusia	1735 Erie		2-13-86
11+00	145.4	137.87	7.5				15608	15603	1760 Volusia	1735 Erie	2-13-86	2-13-86
12+00	144.7	138.25	6.5				15609	15604	1760 Volusia	1735 Erie	2-13-86	2-13-86
	145.39	138.50	6.9	EXIST 12+66.7			15610	15605	1760 Volusia	1735 Erie	2-13-86	2-13-86
Priv. S.S. for GOLDEN HILLS ADDN. (CONT)												
0+00	155.18	144.18	11.0	EXIST 0+00			15611	15606	1760 Volusia	1735 Erie	2-13-86	2-13-86
1+00	155.0	144.69	10.3				15612	15607	1760 Volusia	1735 Erie	2-13-86	2-13-86
2+00	155.5	145.23	10.3				15613	15608	1760 Volusia	1735 Erie	2-13-86	2-13-86
3+00	156.0	145.73	10.3				15614	15609	1760 Volusia	1735 Erie	2-13-86	2-13-86
4+00	156.5	146.12	10.4				15615	15610	1760 Volusia	1735 Erie	2-13-86	2-13-86
5+00	155.9	146.63	9.3				15616	15611	1760 Volusia	1735 Erie	2-13-86	2-13-86
6+00	155.3	147.08	8.2				15617	15612	1760 Volusia	1735 Erie	2-13-86	2-13-86
7+00	154.8	147.55	7.3				15618	15613	1760 Volusia	1735 Erie	2-13-86	2-13-86
8+00	154.5	148.01	6.5				15619	15614	1760 Volusia	1735 Erie	2-13-86	2-13-86
9+00	154.1	148.48	5.6				15620	15615	1760 Volusia	1735 Erie	2-13-86	2-13-86
0+00	155.70	145.50	10.2				15621	15616	1760 Volusia	1735 Erie	2-13-86	2-13-86
1+00	155.16	145.75	9.4				15622	15617	1760 Volusia	1735 Erie	2-13-86	2-13-86
FORCE MAIN												
0+00	138.20	134.70	3.5	EXIST MH								
1+35	133.5	129.30	4.2									
4+45	138.0	127.60	10.4									
4+65	DITCH	121.60										
5+25		121.00										
5+93	138.1	131.50	6.6									
6+61	137.0	133.00	4.0									
9+12	137.9	133.90	4.0									
10+12	138.8	134.80	4.0									
12+72	139.2	135.22	4.0									
12+81	142.0	139.00	3.0									
13+01.8	145.08	139.00	6.1	WET WELL 13+01.8								

Reconst 16th to

14th to

Reconst. Sof. 17th

Priv. S.S. LINE 3

LINE 4

FORCE MAIN

Top PIPE ELEV.

Form #192-020 (July, 1981)

Rep-2000-02415-11301- Glover Ent- 4" SCH 40-Tied to exist Bld Sewer- 2 TWIN CO, 1V22, 2 KICKOUTS, 4H45