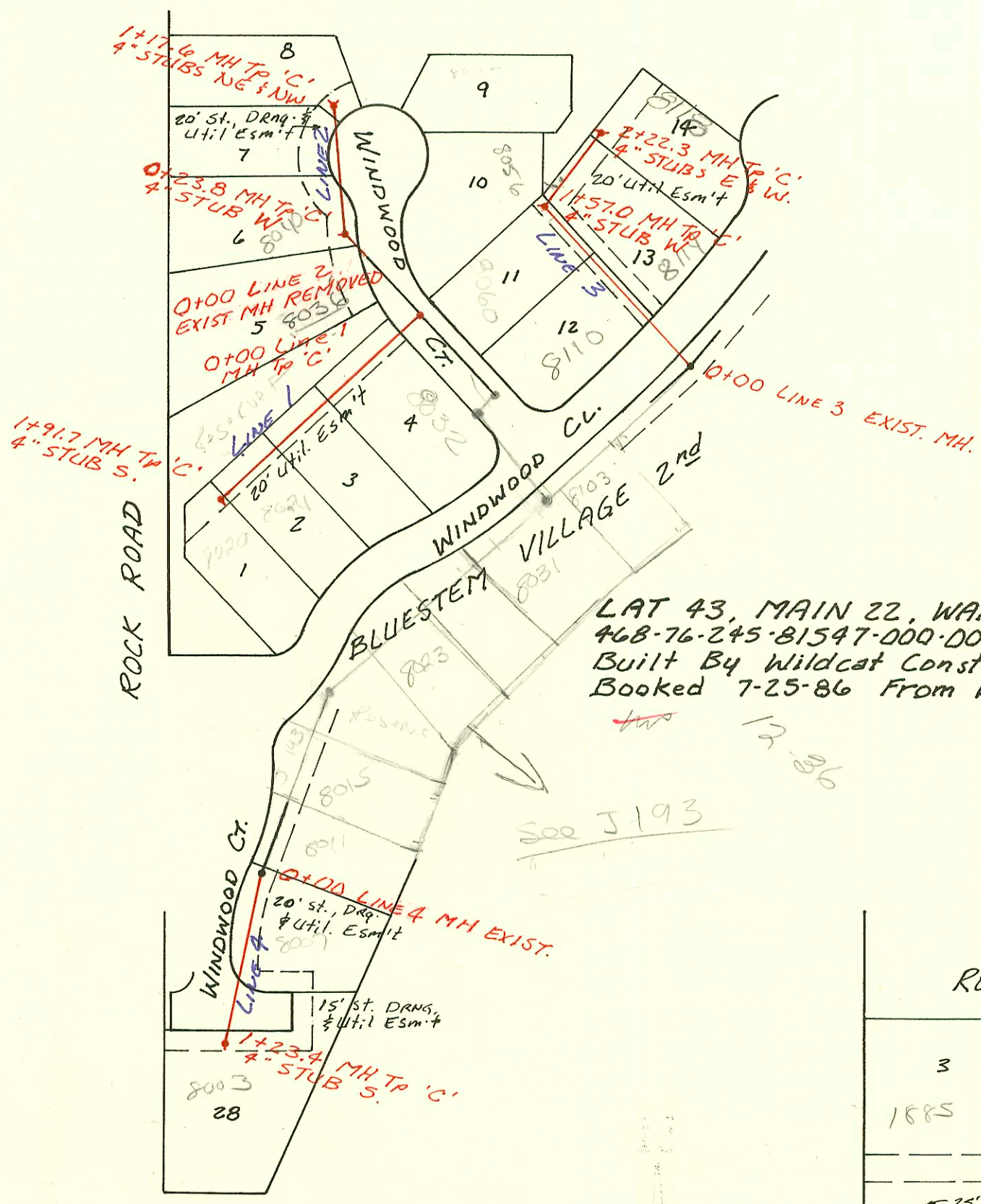
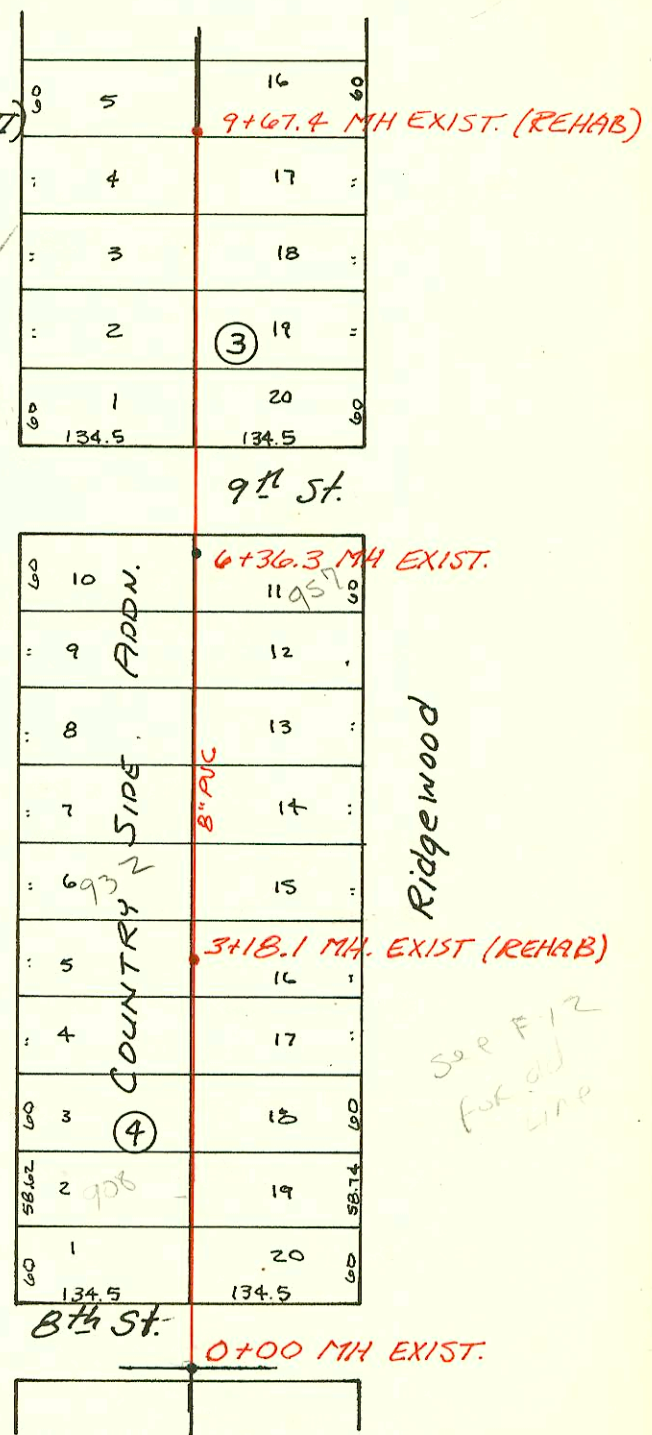
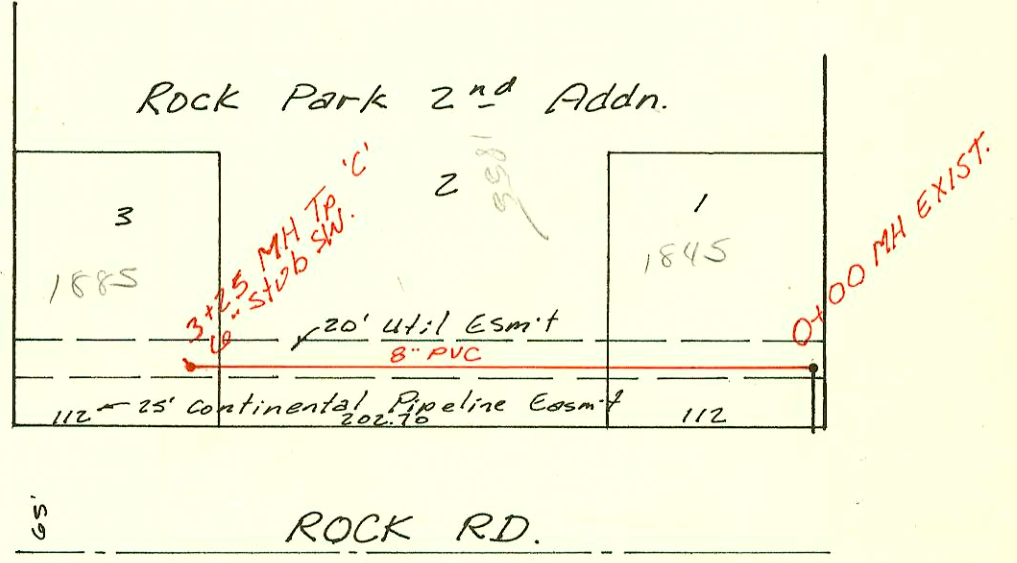


Reconst. Portions of S.S. located in general Area Bet. Battin & Edgemoor, Murdock to 10th (PH.II)
 468-76-245-81498-000-000-001
 Built By Utility Contrs.
 Booked 7-17-86 From MG-50



LAT 43, MAIN 22, WAR INDUSTRIES
 468-76-245-81547-000-000-001
 Built By Wildcat Const.
 Booked 7-25-86 From BR-117



Priv. San. Sewer for Rock Park 2nd Addn.
 468-76-245-80001-000-000-070
 Built By Utility Contr.
 Booked 7-28-86 From D.W.V. 1

CONSTRUCTION RECORD						SERVICE RECORD						
STATION	ELEVATION		Depth	MANHOLE	4-INCH "Y" BRANCHES		No. of Permit		House Number		DATE OF PERMITS	
	Ground	Grade			North West	South East	North West	South East	North West	South East	North West	South East
Reconst. S.S. (Murdock to 8th, BATTIN to PINECREST)												
6+89.9	185.15	173.59	12.2	6+89.9								
7+00	185.5	173.60	11.9									
8+00	184.3	173.74	10.6									
9+00	183.2	173.88	9.3									
10+00	183.4											
	183.41	174.02	9.4	10+02.3								
11+00	183.8	174.20	9.6									
12+00	183.5	174.39	9.1									
13+00	183.8	174.57	9.2									
	183.82	174.59	9.2	13+08.2								
Reconst. S.S. (Parkwood & Ridgewood, 8th to N. of 9th)												
0+00	207.14	195.68	11.5	0+00								
1+00	208.1	195.91	12.2		4" stub 1+33.1 top		12-910-7 24497-7		708 E PARKWOOD		6-22-92 6-13-91	
2+00	208.5	196.14	12.4									
3+00	208.4	196.37	12.0									
	208.51	196.41	12.1	3+18.1								
4+00	208.9	196.60	12.3									
5+00	209.0	196.84	12.2									
6+00	208.9	197.07	11.8									
	208.92	197.16 OUT 197.75 IN	11.8	6+36.3								
7+00	207.8	197.85	10.0									
8+00	208.9	198.00	10.9									
9+00	209.0	198.15	10.9									
	209.53	198.25	11.3	9+67.4								
LAT 43 MAIN 22, W 15												
LINE 1	0+00	215.80	205.31	10.5	0+00							
	1+00	215.6	205.80	9.8								
		215.63	206.25	9.4	1+91.7							
LINE 2	0+00	216.3	205.55	10.8								
		216.10	205.13 OUT 205.85 IN	10.4	0+23.8	4" STUB W						
	1+00	216.3	206.61	9.7								
LINE 3	0+00	212.95	203.12	9.8	0+00	4" STUB NE 4" STUB NW						
	1+00	213.6	204.10	9.5								
		215.06	204.66 OUT 204.74	10.4	1+57.0							
	2+00	214.1	205.15	9.0								
		214.63	205.37	9.3	2+22.3	4" STUB W 4" STUB E						
LINE 4	0+00	212.02	203.95	8.1	0+00							
	1+00	211.2	204.26	6.9								
		212.18	204.33	7.9	1+23.4	4" STUB S						
Priv. San. Sew. for Rock Park 2nd Addn.												
	0+00	155.5	145.90	9.6	0+00							
	1+00	157.4	146.50	10.9								
					1+57.0							
	2+00	159.5	147.10	12.4								
	3+00	158.0	147.70	10.3								
		158.4	147.85	10.6	3+25	6" STUB SW						