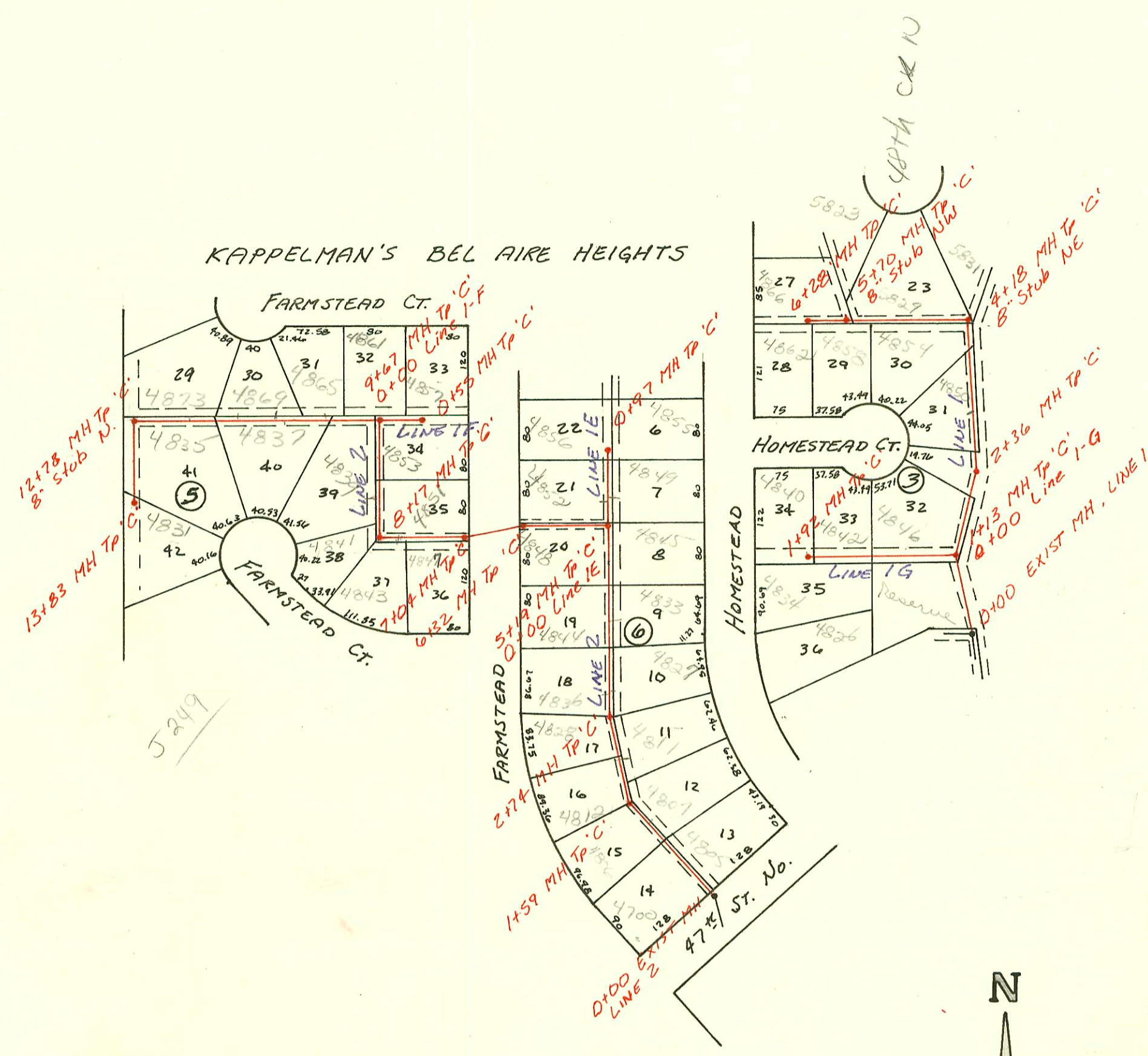


KAPPELMAAN'S BEL AIRE HEIGHTS



Priv. San. Sewer for Kappelmaan's
 Bel Aire Heights (Phase II)
 468-76-245-80001-000-000-057
 Built By Utility Cont.
 Booked 8-18-86 From 'As Built Plan'



Handwritten notes:
 C.C. E. 2002
 11-18

CONSTRUCTION RECORD						SERVICE RECORD						
STATION	ELEVATION		Depth	MANHOLE	4-INCH "Y" BRANCHES		No. of Permit		House Number		DATE OF PERMITS	
	Ground	Grade			North West	South East	North West	South East	North West	South East	North West	South East
Priv. S.S. Line 1A3 (cont)	Kappelman's Bel Aire Heights (Cont.)											
8+00	243.6	230.95	12.7			8+09.0 TAP		15569		4701 Farmstead		2-3-16
9+00	243.6	231.54	12.1			9+64.0 TAP		20800		4809 Farmstead		6-2-88
10+00	242.8	232.13	10.7			4" SCH 40 10+72.0 TAP		2516		4815 Farmstead		7-13-97
11+00	241.9	232.73	9.2									
	241.94	233.01	8.9	11+48								
12+00	241.6	233.19	8.4									
13+00	240.7	233.54	7.2			13+02.0 TAP		20009		4823 Farmstead		1-28-88
14+00	240.1	233.88	6.2			14+26.0 TAP		22233		4885 Farmstead		12-14-88
	239.96	234.06	5.9	14+52				2481		4824 Farmstead		4-14-93
Priv. S.S. Line 1	for Kappelman's Bel Aire Heights PHASE II											
0+00	232.80	215.42	17.4	0+00								
1+00	231.9	215.99	15.9									
	231.97	216.02	16.0	0+00 L-19 1+13								
2+00	227.6	216.29	11.3									
	228.28	216.39	11.9	2+36		2+94 4" RISER W		18959		4650 Homestead		8-31-87
3+00	231.4	216.60	14.8									
4+00	232.1	216.90	15.2									
	232.35	223.10	9.3	4+18		8" Stub NE						
5+00	232.6	224.34	8.3			4" SCH 40 4+66 Saddle	5+07.0 TAP	3223	24086	5827 4804 Homestead	4854 Homestead	3-19-99 10-11-89
	233.90	225.50	8.5	5+70		8" Stub NW	5+84.0 TAP		22369	4858 Homestead	4862 Homestead	1-9-89 3-11-92
6+00	233.8	225.57	8.2			6+18.5 TAP		21410	2249	4866 Homestead	4862 Homestead	5-31-88 3-11-92
	233.85	225.63	8.2	6+28 7+13 L-1								
Line 16	0+00	231.97	222.47	9.5	0+00							
						0+83 TAP		17352		4846 Homestead		11-24-86
1+00	232.80	222.62	8.2			1+63 TAP		19194		4842 Homestead		10-9-87
	234.63	226.60	8.0	1+92		4" SCH 40 1+87 TAP	1+83.0 TAP	2624	17645	4840 Homestead	4834 Homestead	2-18-94 1-15-87
Line 2	0+00	233.10	222.66	10.4	0+00							
1+00	237.20	222.96	14.2			1+20 4" RISER W	1+24 4" RISER E	16896	25050	4806 Farmstead	4807 Homestead	8-28-86 4-3-90
	238.50	223.13	15.4	1+59		1+78 4" RISER W	1+82 4" RISER E	20280		4812 Farmstead		3-15-88
2+00	239.1	223.26	15.8			2+20 4" RISER W	2+20 4" RISER E	20746	2430	4828 Farmstead	4811 Homestead	5-26-88 9-11-92
	238.35	223.48	14.9	2+74								
3+00	236.6	223.57	13.0			3+05 4" RISER W	3+08 4" STUB E	23742	17212	4827 Homestead	4836 Farmstead	8-11-89 10/28/86
						3+93 4" RISER W	3+96 4" RISER E	17619	19338	4841 Homestead	4835 Homestead	1-12-87 10/19/87
4+00	237.6	223.87	13.7			4+72 4" RISER W	4+75 4" RISER E	18162	18802	4846 Farmstead	4845 Homestead	4-20-87 8-7-87
5+00	237.6	224.17	13.4									
	237.90	224.22	13.7	0+00 L-1E 5+19								
6+00	239.4	224.56	14.8									
	240.10	224.65	15.5	6+32								
7+00						7+85 4" RISER W	7+44 4" RISER S	20613	25437	4851 Farmstead	4847 Farmstead	4-29-88 5-29-90
	241.24	224.87	16.7	7+04								
8+00	243.2	225.17	18.0			7+95 4" RISER W	7+98 4" RISER S			Bel Aire	4843 Farmstead	
	243.37	225.22	18.2	8+17		8+25 4" RISER W				Bel Aire	4841 Farmstead	12-16-91
9+00	242.1	225.56	16.5			9+16 4" RISER W	9+17 4" RISER E	3304	17901	4837 Farmstead	4850 Farmstead	10-26-91 3-10-87
	241.71	225.77	15.9	0+00 L-1E 9+67								
10+00	241.6	225.96	15.6									
						10+36 4" RISER N	10+86 4" RISER S	2798	3225	4863 Farmstead	4887 Farmstead	2-13-85 10/14/97
11+00	241.2	226.26	14.9			11+01 4" RISER N				4867 Farmstead		6-29-99
12+00	240.1	226.56	13.5			12+09 4" RISER N	12+05 4" RISER S	2248		4873 Farmstead		12-1-97
	240.46	226.80	13.7	12+78		8" Stub N						
13+00	240.9	232.34	8.6									
	240.98	233.46	7.5	13+83								
Line 1E	0+00	237.90	224.32	13.6	0+00							
						0+31 4" RISER W	0+36 4" RISER E	18670	18406	4850 Farmstead	4847 Homestead	7-13-87 5-28-87
	238.45	224.70	13.8	0+97								
Line 1F	0+00	241.71	234.34	7.4	0+00							
	242.11	234.57	7.5	0+58								

Form #192-020 (July, 1981)

* 17212 - 10/28/86 4836 Farmstead - Don Coleman Co. tied the address to Riser at 3+08 instead of Riser 3+05. Therefore 4827 Homestead was tied into Riser 3+05.
 # 2430 9-11-92 4811 N. Homestead - (4" RISER 58' S. of MH 2174 - 4" SCH 35)