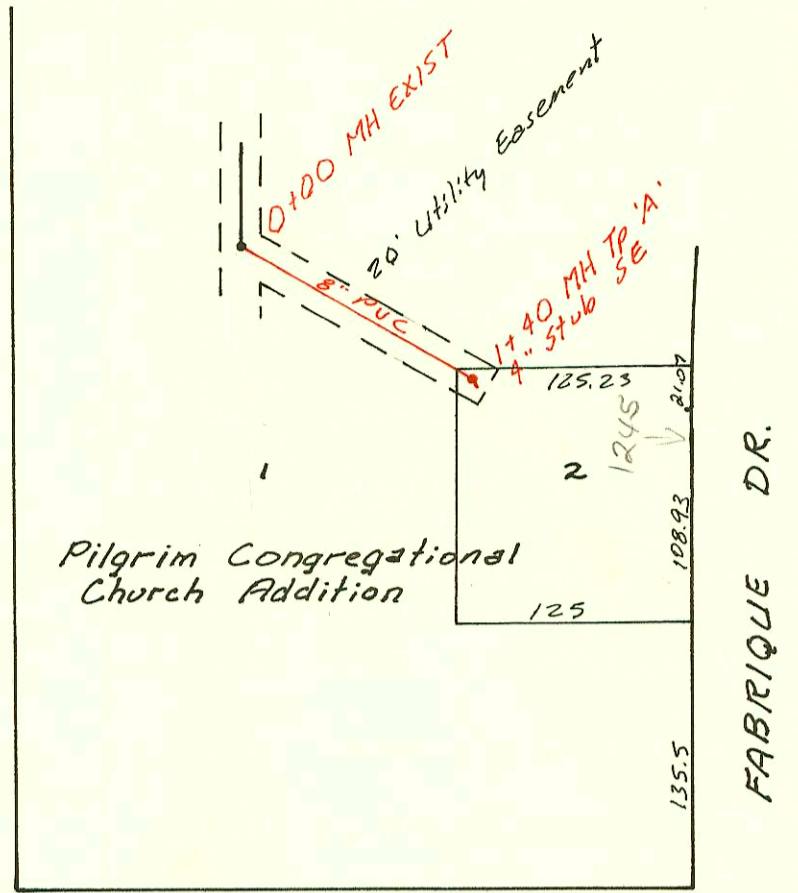


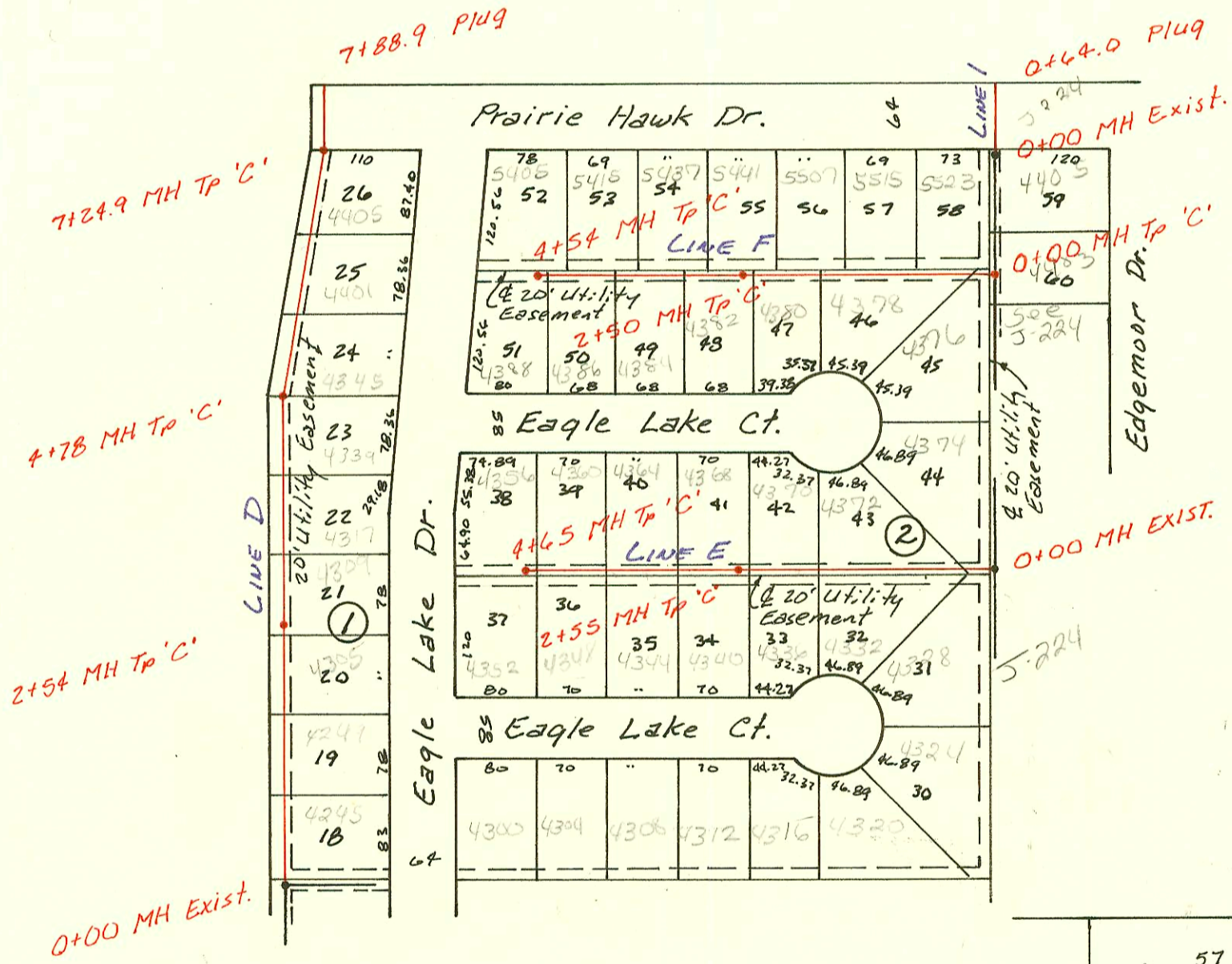
Priv. S.S. for Pilgrim Congregational Church Addn.
468-76-245-80001-000-000-074
Built By Triple 'C'
Booked B-22-86 From TCD-7

CLEAR 11-60



HARRY ST.

Priv. S.S. for Eagle Lake Addition (Phase II)
468-76-245-80001-000-000-051
Built By
Booked 9-12-86 From "As Built"

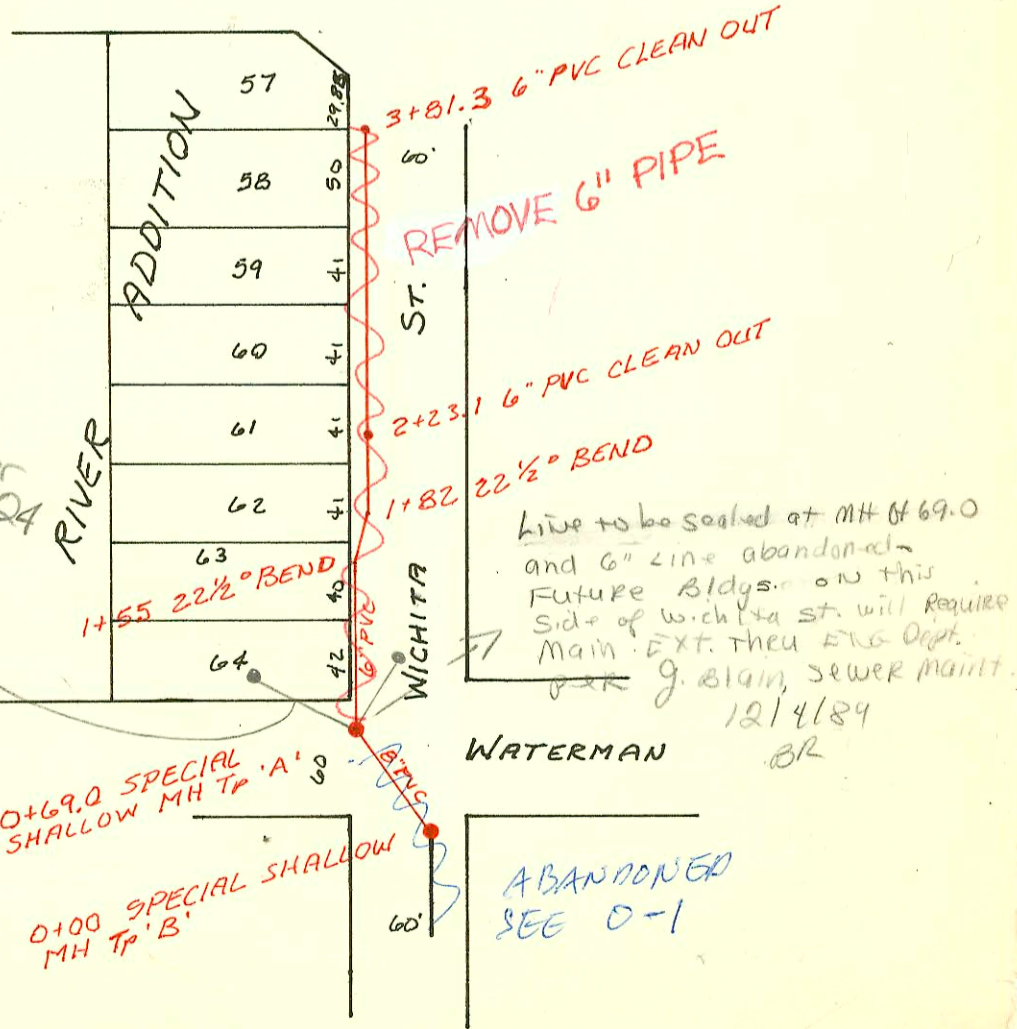


0+00 MH Exist.

2+54 MH TP 'C'

4+78 MH TP 'C'

7+24.9 MH TP 'C'



RECONSTRUCT A PORTION OF LAT N,
WEST SUBMAIN A, ON LEWIS, S.S. #1
Built By MID-KANSAS CONST.
468-76-245-81558-000-000-001
Booked 9-15-86 From DRH B

2-9

ABANDONED
SEE 0-1

CONSTRUCTION RECORD						SERVICE RECORD						
STATION	ELEVATION		Depth	MANHOLE	4-INCH "Y" BRANCHES		No. of Permit		House Number		DATE OF PERMITS	
	Ground	Grade			North West	South East	North West	South East	North West	South East	North West	South East
Prio. S.S. for PILGRIM CONGREGATIONAL CHURCH ADDN.												
0+00	141.88	132.70										
1+00	139.2	133.10										
	138.0	133.26		1+40		4" Stub SE	173604		1245 S. Eagle Lake			11-25-86
Prio. S.S. for EAGLE LAKE ADDITIONS (PHASE II)												
LINE I	0+00	222.82	213.60	9.2	EXIST	0+00						
	0+64	223.60	213.86	9.7	0+64							
LINE D	0+00	208.6	200.73	7.9	0+00			17664	4245 Eagle Lake			1-21-87
	1+00	210.6	201.13	9.5				17670	4249 Eagle Lake			1-21-87
	2+00	209.1	201.53	7.6				17524	4305 Eagle Lake			1-23-86
		209.25	201.75	7.5	2+54			18766	4389 Eagle Lake			7-27-87
	3+00	208.6	201.94	6.7								
	4+00	209.2	202.35	6.9				18961	4317 Eagle Lake			9-11-87
		209.82	202.65 OUT 202.75 IN	7.2	4+78			23158	4339 Eagle Lake			5-16-89
	5+00	208.7	202.84	5.9				1660	4345 Eagle Lake			12-09-81
	6+00	208.4	203.24	5.2				21701	4401 Eagle Lake			10-17-88
								19257	4405 Eagle Lake			10/07/87
	7+00	210.4	203.64	6.8								
		211.03	203.74 OUT 203.84 IN	7.3	7+24.9							
LINE E	7+88.9	211.50	204.10	7.4								
	0+00	215.89	206.73	9.2	EXIST	0+00						
	1+00	216.4	207.13	9.3				23832	4372 Eagle Lake			9-5-89
								23328	4339 Eagle Lake			6-7-89
	2+00	215.9	207.53	8.4				1851	4519 Eagle Lake			9-11-87
		215.52	207.75	7.8	2+55			17896	4366 Eagle Lake			3-10-87
	3+00	215.3	207.93	7.4				17756	4364 Eagle Lake			2-5-89
	4+00	214.6	208.33	6.3				17398	4348 Eagle Lake			12-3-86
		214.96	208.59	6.4	4+65			17672	4356 Eagle Lake			1-21-89
LINE F	0+00	219.43	208.04	11.4	0+00			17114	4360 Eagle Lake			2-2-87
								21391	4370 Eagle Lake			2-10-87
	1+00	219.6	208.44	11.2				20099	4372 Eagle Lake			8-29-88
								19069	4370 Eagle Lake			9-15-87
	2+00	220.1	208.84	11.3				20644	4382 Eagle Lake			5-6-88
		219.54	209.04	10.5	2+50			20929	4382 Eagle Lake			6-23-88
	3+00	218.3	209.24	9.1				22643	4381 Eagle Lake			9-7-87
								18958	4375 Eagle Lake			8-31-87
	4+00	216.8	209.64	7.2				20585	4362 Eagle Lake			5-3-88
		215.68	209.86	5.8	4+54			1776	4367 Eagle Lake			3-19-87
RECONSTRUCT A PORTION OF LAT N, WEST SUBMAIN A, ON LEWIS, S.S. #1												
	0+00	109.23	105.44	3.8	0+00							
		109.08	105.47	3.6	0+69			24396	301 S. Wichita			11-30-87