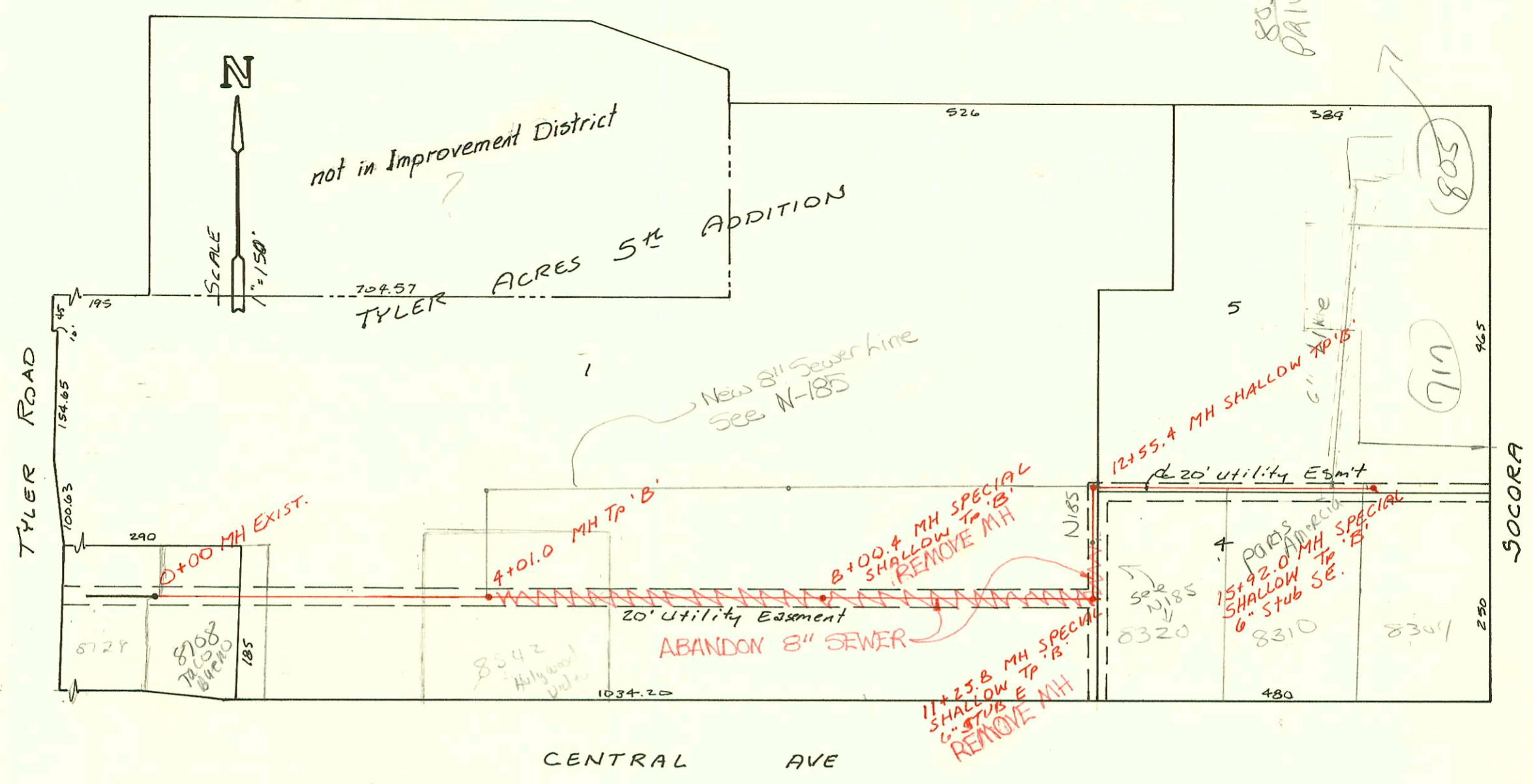


805 N. SCORLA
PAIN 10' FROM



LRT 74, WESTLINK SEWER
 468-76-245-81279-000-001
 Built By WILDCAT CONST.
 Booked 10-14-86 FROM BR-80

5/14/87

| CONSTRUCTION RECORD | | | | | | SERVICE RECORD | | | | | | |
|-------------------------------|-----------|-------------------------|-------|----------------------|----------------------|----------------------|---------------|-------------|----------------------------------|-------------|-----------------|------------|
| STATION | ELEVATION | | Depth | MANHOLE | 4-INCH "Y" BRANCHES | | No. of Permit | | House Number | | DATE OF PERMITS | |
| | Ground | Grade | | | North West | South East | North West | South East | North West | South East | North West | South East |
| LAT 79 WESTLINK SEWER | | | | | | | | | | | | |
| 0+00 | 146.67 | 140.36 | 6.3 | EXIST 0+00 | | | | | | | | |
| 1+00 | 147.6 | 140.62 | 7.0 | | | | | | | | | |
| 2+00 | 147.6 | 140.88 | 6.7 | | | | | | | | | |
| 3+00 | 148.0 | 141.15 | 6.9 | | | | | | | | | |
| 4+00 | | | | | | | | | | | | |
| | 148.99 | 141.41 OUT 141.99 IN | 7.6 | 4+01.0 | | | | | | | | |
| 5+00 | 148.5 | 141.78 | 6.7 | | | | | | | | | |
| 6+00 | 148.0 | 142.07 | 5.9 | | | | | | | | | |
| 7+00 | 147.4 | 142.36 | 5.0 | | | | | | | | | |
| 8+00 | | | | | | | | | | | | |
| | 146.95 | 142.65 OUT 142.66 IN | 4.3 | 8+00.4 | | | | | | | | |
| 9+00 | 147.2 | 143.01 | 4.2 | | | | | | | | | |
| 10+00 | 147.4 | 143.35 | 4.1 | | | | | | | | | |
| 11+00 | 147.7 | 143.70 | 4.0 | | | | | | | | | |
| | 147.88 | 143.79 OUT 143.88 IN | 4.1 | 11+25.8 | 11+91.4 TAP | | 16299 | | 8320 Central | | 8-27-86 | |
| 12+00 | 148.5 | 144.14 | 4.4 | | | | | | Refer to 11-185 for reconnection | | | |
| | 149.57 | 144.34 OUT 144.43 IN | 5.2 | 12+55.4 | | | | | | | | |
| 13+00 | 149.5 | 144.58 | 4.9 | | | | | | | | | |
| 14+00 | 149.5 | 144.92 | 4.6 | | | | | | | | | |
| 15+00 | 149.5 | 145.27 | 4.2 | | 15+40.0 TAP | | 10493 | 97-16417 | 830 W Central | | 9-22-97 | |
| | 149.47 | 145.58 | 3.9 | 15+92.0 | 15+83 TAP | | 20007 | 805 Sncora | 8304 W Central | 11-4-87 | 1-27-88 | |
| LAT 80 LINE 3 WESTLINK (Cont) | | | | | | | | | | | | |
| 0+00 | 155.5 | 146.53 | 9.0 | 11+06.3 Cont 0+00 | | | | | | | | |
| 1+00 | 155.8 | 146.84 | 9.0 | | 1+93.0 TAP | | 21336 | | 9702 Westlawn | | 8-19-88 | |
| 2+00 | 156.2 | 147.14 | 9.1 | | 2+01.4 TAP | | 21063 | 9703 W 20th | 9706 Westlawn | 10-10-89 | | |
| | | | | | 2+19.4 TAP | 2+51.4 TAP | 24176 | 9707 W 20th | 9706 Westlawn | 10-27-89 | 1-10-89 | |
| 3+00 | 156.6 | 147.45 | 9.2 | | | | | | | | | |
| | 157.39 | 147.70 | 9.7 | 3+83.4 | 4" PVC 40 2+57.4 top | 3+28.4 TAP | 21167 | 9711 W 20th | 9710 Westlawn | 8-28-91 | 6-18-89 | |
| 4+00 | 157.0 | 147.75 | 9.3 | | 4" SDR 31 4+01.4 top | 4+26.4 TAP | 21517 | 9715 W 20th | 9714 Westlawn | 10-11-91 | 11-22-87 | |
| | | | | | 4+95.4 TAP | 5+13.4 top | 22138 | 9803 W 20th | 9802 Westlawn | 11-29-88 | 5-31-90 | |
| 5+00 | 157.5 | 148.03 | 9.5 | | | 5+61.4 TAP | 26790 | | 9806 Westlawn | | 12-19-90 | |
| 6+00 | 158.0 | 148.31 | 9.7 | | 4" SDR 31 5+52.4 top | 6+07.4 TAP | 213167 | 9807 W 20th | 9810 Westlawn | 4-26-91 | | |
| | | | | | 6+55.0 TAP | 4" SDR 31 6+13.4 top | 26929 | 9811 W 20th | 9810 Westlawn | 1-25-91 | 7-25-89 | |
| 7+00 | 158.0 | 148.59 | 9.4 | | 6+89.0 TAP | 4" SDR 31 7+13.4 top | 26883 | 9815 W 20th | 9814 Westlawn | 1-16-91 | 9-17-90 | |
| 8+00 | 157.9 | 148.88 | 9.0 | | 7+74.0 TAP | 7+66.0 TAP | 21703 | 9817 W 20th | 9818 Westlawn | 10-17-88 | 10-17-88 | |
| | 158.23 | 148.95 | 9.3 | 8+26.0 | | | | | | | | |
| 8+94.8 | 157.6 | 149.14 | 8.5 | | | | | | | | | |
| LINE 4 | | | | | | | | | | | | |
| 0+00 | 155.71 | 147.04 | 8.7 | 14+07.5 L-1 0+00 | | | | | | | | |
| 1+00 | 156.0 | 147.35 | 8.7 | | | | | | | | | |
| 2+00 | 156.2 | 147.67 | 8.5 | | 4" SDR 21 2+19.8 top | 2+20.8 TAP | 21250 | 24901 | 915 Amador | 9702 W 20th | 6-21-91 | 3-6-90 |
| | | | | | 2+90.8 TAP | 2+93.3 TAP | 20971 | 25781 | 9707 Corvelion | 9706 W 20th | 6-24-88 | 7-23-90 |
| 3+00 | 156.5 | 147.98 | 8.5 | | 4" SDR 21 3+23.8 top | 3+64.8 TAP | 21294 | 270747 | 9711 Corvelion | 9710 W 20th | 8-10-88 | 4-19-91 |
| | 157.25 | 148.26 | 9.0 | 3+89.8 | | | | | | | | |
| 4+00 | 157.0 | 148.29 | 8.7 | | 4+34.8 TAP | 4+44.8 TAP | 20210 | 24177 | 9715 Corvelion | 9714 W 20th | 3-01-88 | 10-27-87 |
| | | | | | 4+96.8 TAP | 4+83.8 TAP | 23838 | 21619 | 9803 Corvelion | 9802 W 20th | 7-6-89 | 10-03-88 |
| 5+00 | 157.3 | 148.56 | 8.7 | | | | | | | | | |
| | | | | | 5+72.8 TAP | 5+76.8 TAP | 20683 | 26885 | 9807 Corvelion | 9806 W 20th | 5-16-88 | 1-17-91 |
| 6+00 | 157.6 | 148.83 | 8.8 | | 4" PVC 40 6+42.8 top | 6+30.8 TAP | 19879 | 25467 | 9811 Corvelion | 9810 W 20th | 10-18-87 | 6-6-90 |
| 7+00 | 157.5 | 149.11 | 8.4 | | | | | | | | | |
| | | | | | 7+74.8 TAP | 7+71.8 TAP | 19279 | 24029 | 9815 Corvelion | 9814 W 20th | 8-11-87 | 10-4-87 |
| 8+00 | 157.2 | 149.38 | 7.8 | | | | | | | | | |
| | 157.68 | 149.45 | 8.2 | 8+25.8 | | | | | 9819 Corvelion | 9818 W 20th | 8-31-90 | 5-21-90 |
| 8+94.6 | 157.1 | 149.64 | 7.5 | | | | | | | | | |

Form #192-020 (July, 1981)

1021/86 H 19355- 805 N. SACORA - Partially (David MBS)
 30' W of MH 15192.2, Ran 340' of 6" 3.00.35 N of main line (11.00 0.00) (Permit #19493 11-4-87 conn Bldg to sewer)