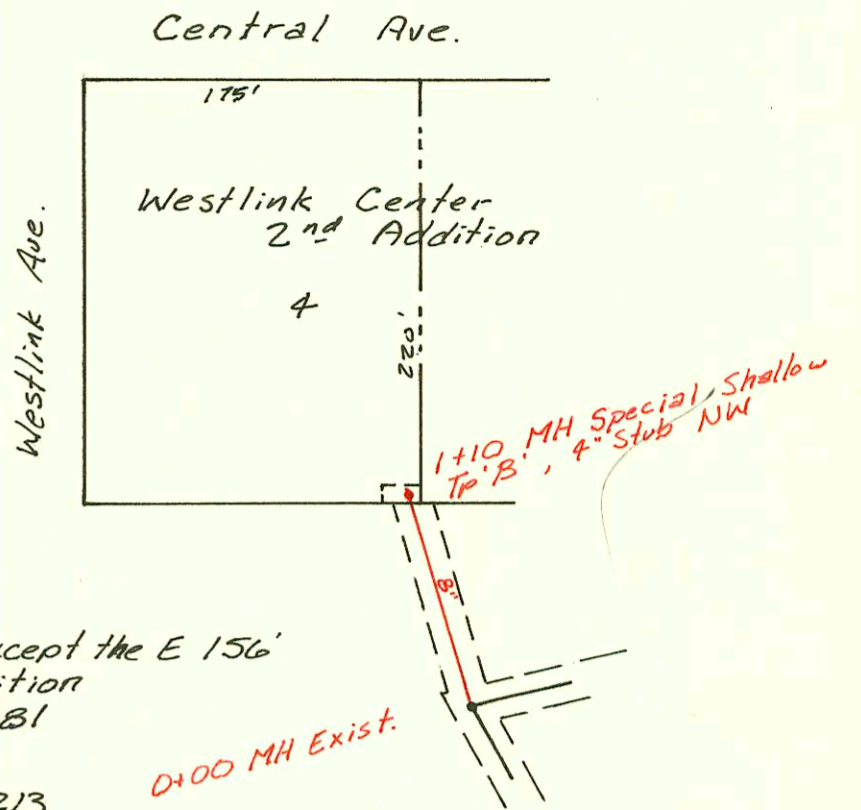
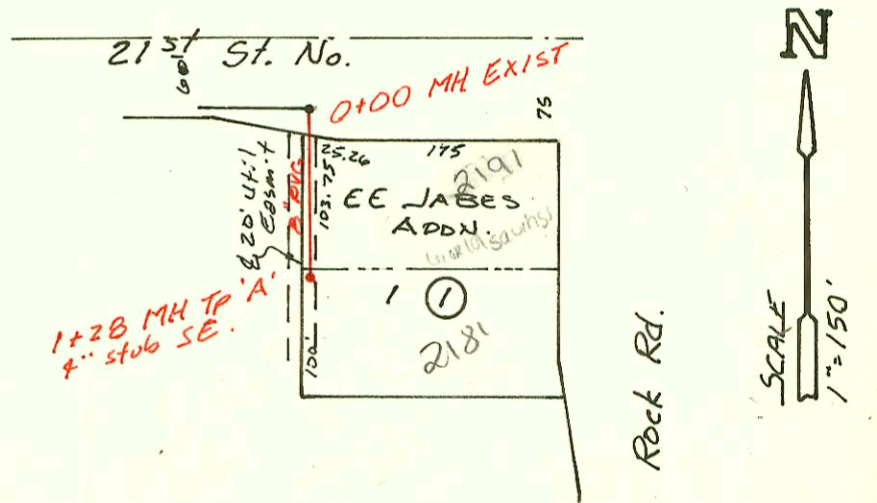
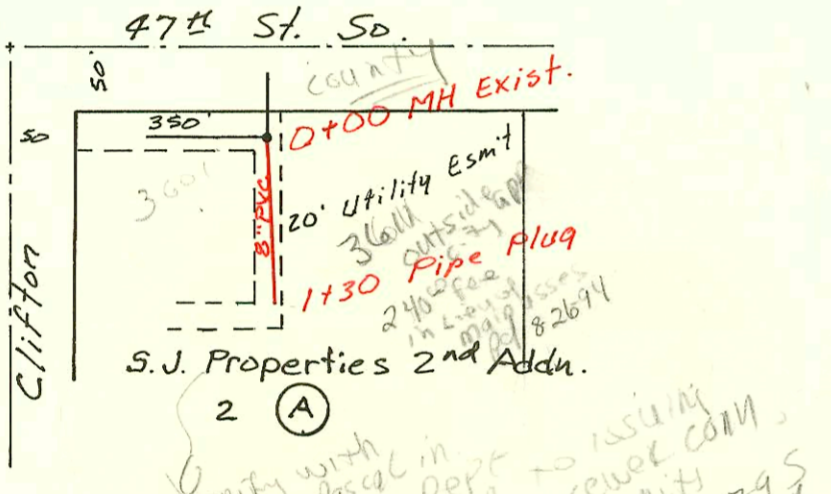


Priv. S.S. for Lot 1, Blk 1, Westport Industrial Park 1st Addn.  
 46B-76-245-80001-000-000-087  
 Built By Mid-States  
 Booked 1-30-87 From TCD-24 7-68



Priv. San. Sew for Lot 4, except the E 156'  
 Westlink Center 2nd Addition  
 46B-76-245-80001-000-000-081  
 Built By Lange Bros.  
 Booked 2-2-87 From DCD-213 5-49

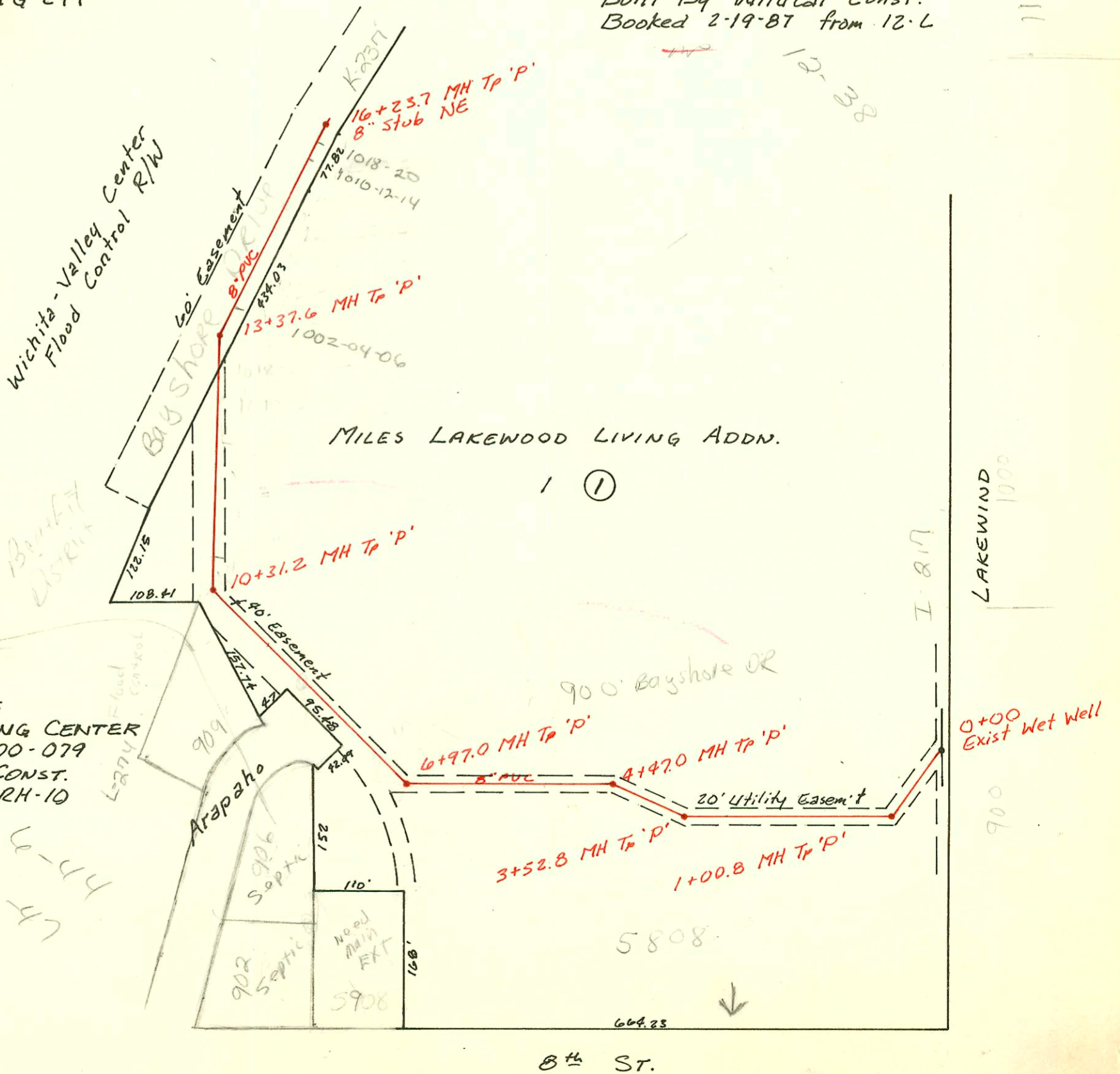


Priv. San. Sewer Ext. to serve Lot 2,  
 Blk A, S.J. Properties 2nd Addn.  
 46B-76-245-80001-000-000-078  
 Built By Pearson Excavating  
 Booked 2-17-87 from JFG-241 10-87

Priv. S.S. for 5 1/2 Lot 1, Blk 1 E.E. Jabes  
 46B-76-245-80001-000-000-092  
 Built By Wildcat Const.  
 Booked 2-19-87 from 12-L 12-88



Priv. San. Sewer for MILES  
 LAKEWOOD LIVING NURSING CENTER  
 46B-76-245-80001-000-000-079  
 Built By Mid-States Const.  
 Booked 2-18-87 from DRH-10 6-44 6-47



8th St.

