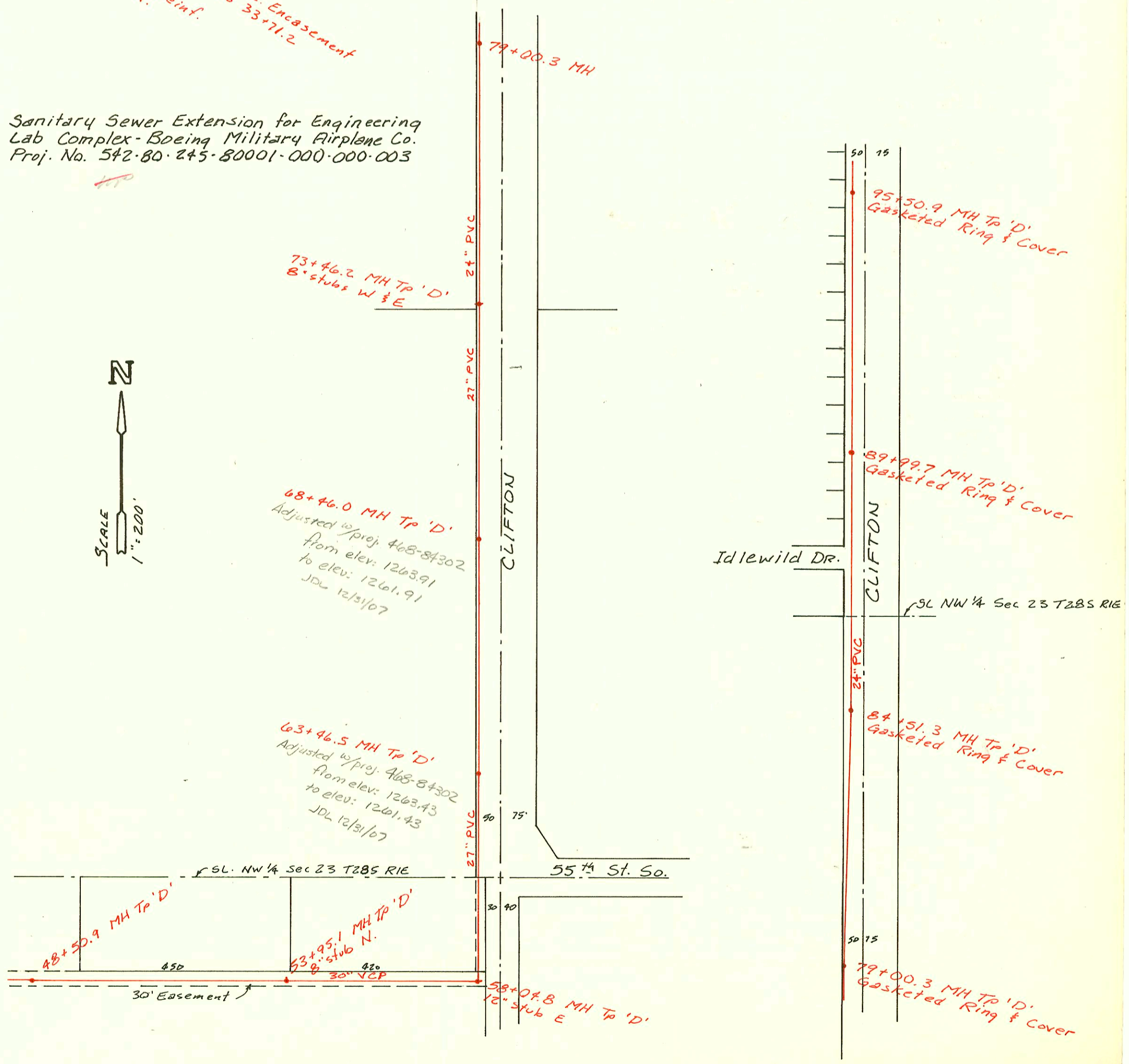


Sanitary Sewer Extension for Engineering Lab Complex - Boeing Military Airplane Co. Proj. No. 542-80-245-80001-000-000-003



CONSTRUCTION RECORD						SERVICE RECORD						
STATION	ELEVATION		Depth	MANHOLE	4-INCH "Y" BRANCHES		No. of Permit		House Number		DATE OF PERMITS	
	Ground	Grade			North West	South East	North West	South East	North West	South East	North West	South East
San. Sewer Ext. Engineering Lab Complex - Boeing Military Airplane Co.												
10+19.2	73.93	51.64	22.3	10+19.2								
11+00	72.8	51.77	21.0									
12+00	73.2	51.93	21.3									
13+00	72.5	52.10	20.4									
14+00	72.1	52.26	19.8									
	72.12	52.42	19.7	14+98.0								
15+00												
16+00	72.5	52.52	20.0									
17+00	72.6	52.61	20.0									
18+00	74.0	52.70	21.3									
19+00	75.4	52.80	22.6									
	79.54	52.89	26.7	19+96.7								
20+00												
21+00	79.1	53.02	26.1									
22+00	76.0	53.15	22.9									
23+00	75.0	53.28	21.7									
24+00	74.0	53.42	20.6									
	74.61	53.45	21.2	24+26.7								
25+00	75.4	53.53	21.9									
26+00	74.0	53.64	20.4									
	78.70	53.70	25.0	26+52.5								
27+00	73.7	53.81	19.9									
28+00	74.2	54.04	20.2									
	76.30	54.15 OUT 54.28 IN	22.2	28+49.8								
29+00	74.1	54.35	19.8									
30+00	60.6	54.48	6.1									
31+00	70.0	54.62	15.4									
32+00	60.3	54.75	5.6									
33+00	73.1	54.88	18.2									
	75.01	54.98 OUT 55.24 IN	20.0	33+71.2								
34+00	74.0	55.44	18.6									
35+00	73.5	56.14	17.4									
36+00	70.0	56.84	13.2									
37+00	76.0	57.54	18.5									
	71.91	58.15 OUT 58.32 IN	13.8	37+87.6 BACK 38+28.5 AHEAD								
39+00	72.0	58.42	13.6									
40+00	73.2	58.57	14.6									
41+00	73.5	58.71	14.8									
42+00	73.4	58.86	14.5									
	73.37	58.98	14.4	42+83.2	8" stub N							
43+00	73.0	59.00	14.0									
44+00	73.0	59.13	13.9									
45+00	73.1	59.26	13.8									
46+00	72.9	59.39	13.5									
47+00	72.6	59.52	13.1									
48+00	72.7	59.64	13.1									
	73.20	59.71	13.5	48+50.9								
49+00	72.6	59.77	12.8									
50+00	72.5	59.89	12.6									
51+00	72.2	60.01	12.2									
52+00	72.3	60.13	12.2									
53+00	72.1	60.25	11.9									
	71.94	60.37	11.6	53+95.1	8" stub N							
54+00												
55+00	71.5	60.46	11.0									
56+00	71.7	60.56	11.1									
57+00	71.2	60.65	10.6									
58+00												
	74.86	60.74 OUT 60.82 IN	14.1	58+04.8	12" stub E							
59+00	75.0	60.95	14.1									
60+00	76.0	61.09	14.9									
61+00	76.0	61.23	14.8									
62+00	75.2	61.37	13.8									
63+00	75.3	61.51	13.8									
	73.45	61.57	13.9	63+46.5	See note 12/31/07							
64+00	75.7	61.62	14.1									
65+00	75.6	61.71	13.9									
66+00	76.0	61.79	14.2									
67+00	76.0	61.88	14.1									

(CONT. ON J-270)